

Walpole Town Forest History

The town forest was created through the foresight of our forefathers at a time when industry had replaced farming as the economic base and open, ravaged land was being reclaimed for civic use.

With the grant of 150 acres of land from Mr. George Plimpton and the environmental vision of Mr. Charles Bird, the forest was established in 1916 for the citizens of Walpole. It became the third Tree Farm in the state to be recognized by the Massachusetts Forestry Association and the first town forest to be managed for timber revenue.

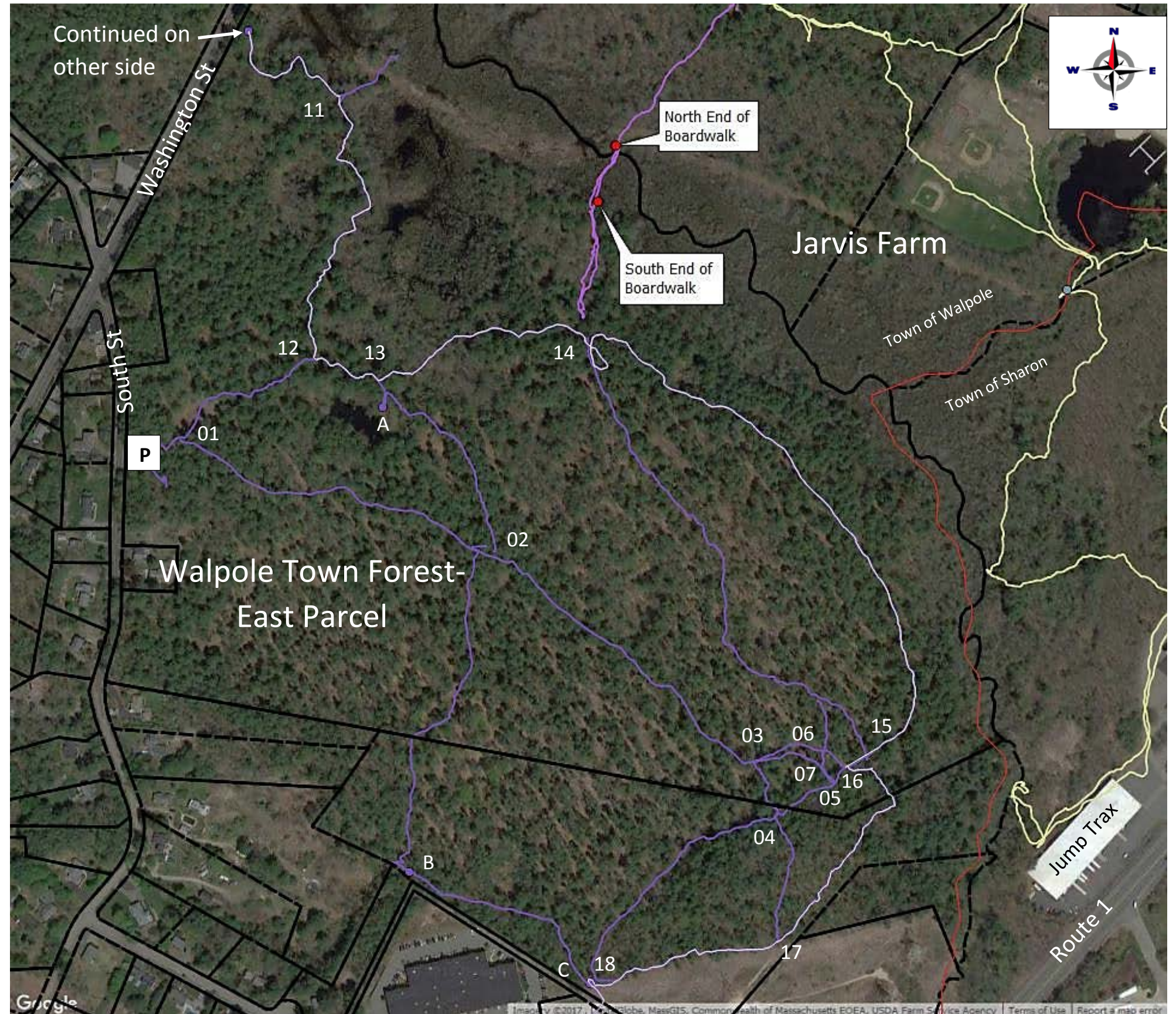
Since those early years, several management plans have been written by professional foresters to guide the town in the maintenance and improvement of the woodlands for public use. The emphasis today is on passive recreation, watershed protection and aesthetic attraction and the preservation of a healthy forest ecosystem.

The Town Forest Committee was created by the Board of Selectmen to oversee continued management of the forest. It is comprised of volunteers committed to the stewardship of the property and to guarantee the original vision of the founders. That vision is to provide Walpole residents the enjoyment a forest can bring and preserving that experience for future generations.

Rules of Use

- Dogs must be leashed at all times
- Do not feed the wildlife
- Cutting of trees or the removal of fallen trees is prohibited
- No possession of nor consumption of alcoholic beverages
- Carry in, carry out
- Outdoor fires and overnight camping are not allowed without Fire Chief & Parks Department notification and approval
- No unauthorized motor vehicles of any kind
- Unauthorized use of metal detectors is not allowed

Walpole Town Forest Map – East of Washington St



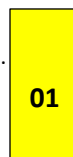
Places of Interest-Letters

- A-Vernal Pool
 - B-Benchmark
 - C-Gate
 - P- Parking area across from 673 South St
 - Red Line-Walpole/Sharon border
- White trail on map-Bay Circuit Trail- White trail blazes & BCT logo:



Trail Intersections-Numbers

(Helps you identify your exact location. Look for yellow markers nearby)
Revised: 9 May 2017



Approximate scale: 1"=250ft
Approximate Area=150 acres
Total Trail Distance=3.2 miles