

The Bay Circuit Trail-Section 2

Description:

Section 2 of the BCT in Walpole is from Robbins Road to the High School. Trail markers on the BCT are WHITE, with occasional square, colored BCT markers. For a detailed trail description, see the BCT website.

Terrain:

This middle section of the BCT is flat with about one-eighth of the length in woods and two-thirds on roads.

Length:

The total length of this section of the BCT is 2.0 miles. Scale as shown in photo: 1"=1000 ft

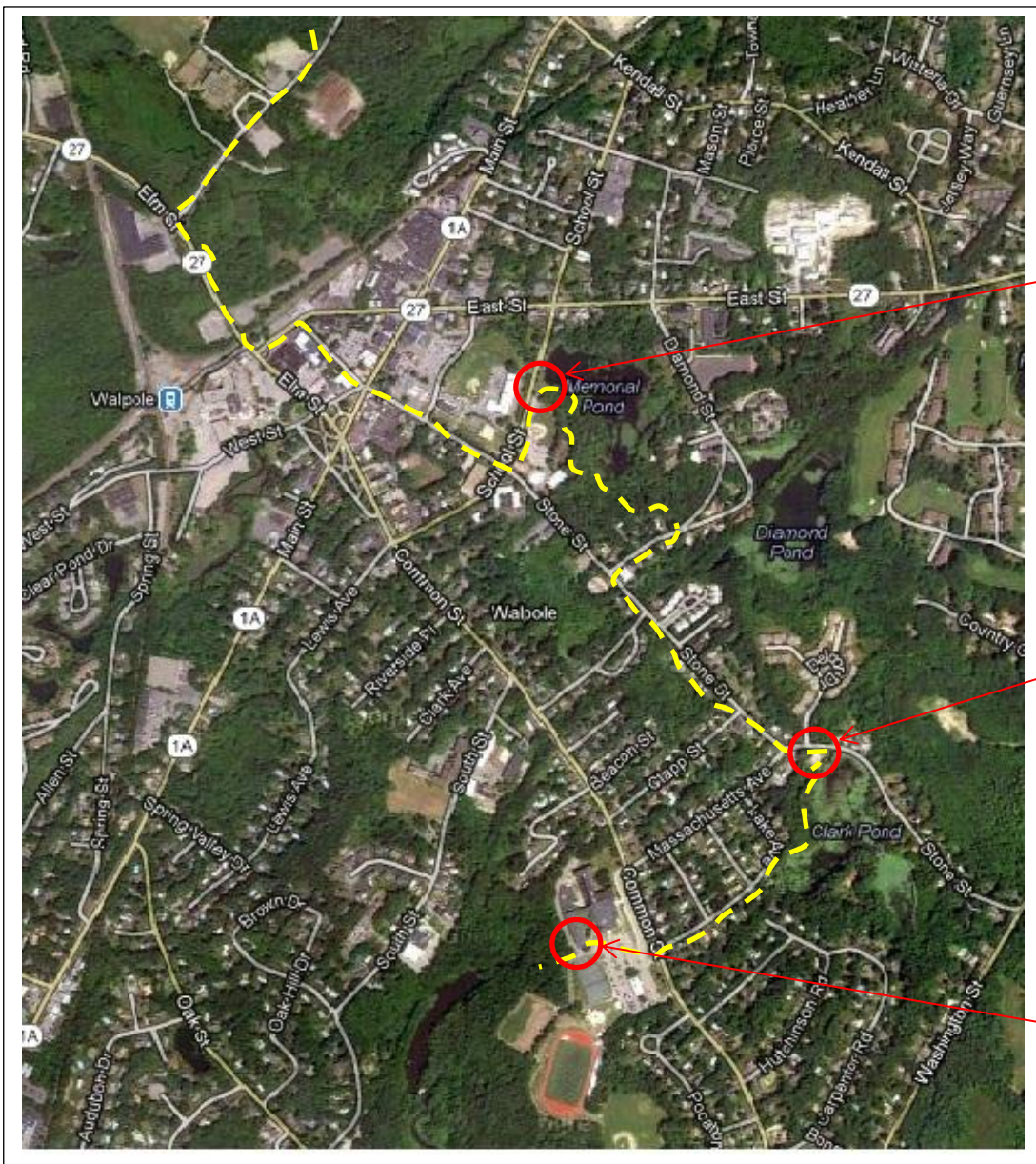
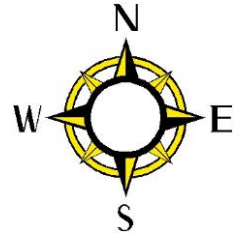
Parking:

North End: Again, park at Johnson Middle School.

Mid-point 1: There is a parking area next to Memorial Pond, across from Town Hall.

Mid-point 2: There is a parking area at Clark's Pond

South End: Park in the lot behind the high school. The trailhead is near the basketball court.



Memorial Pond Parking Area



Clark's Pond Parking Area



High School Parking

