



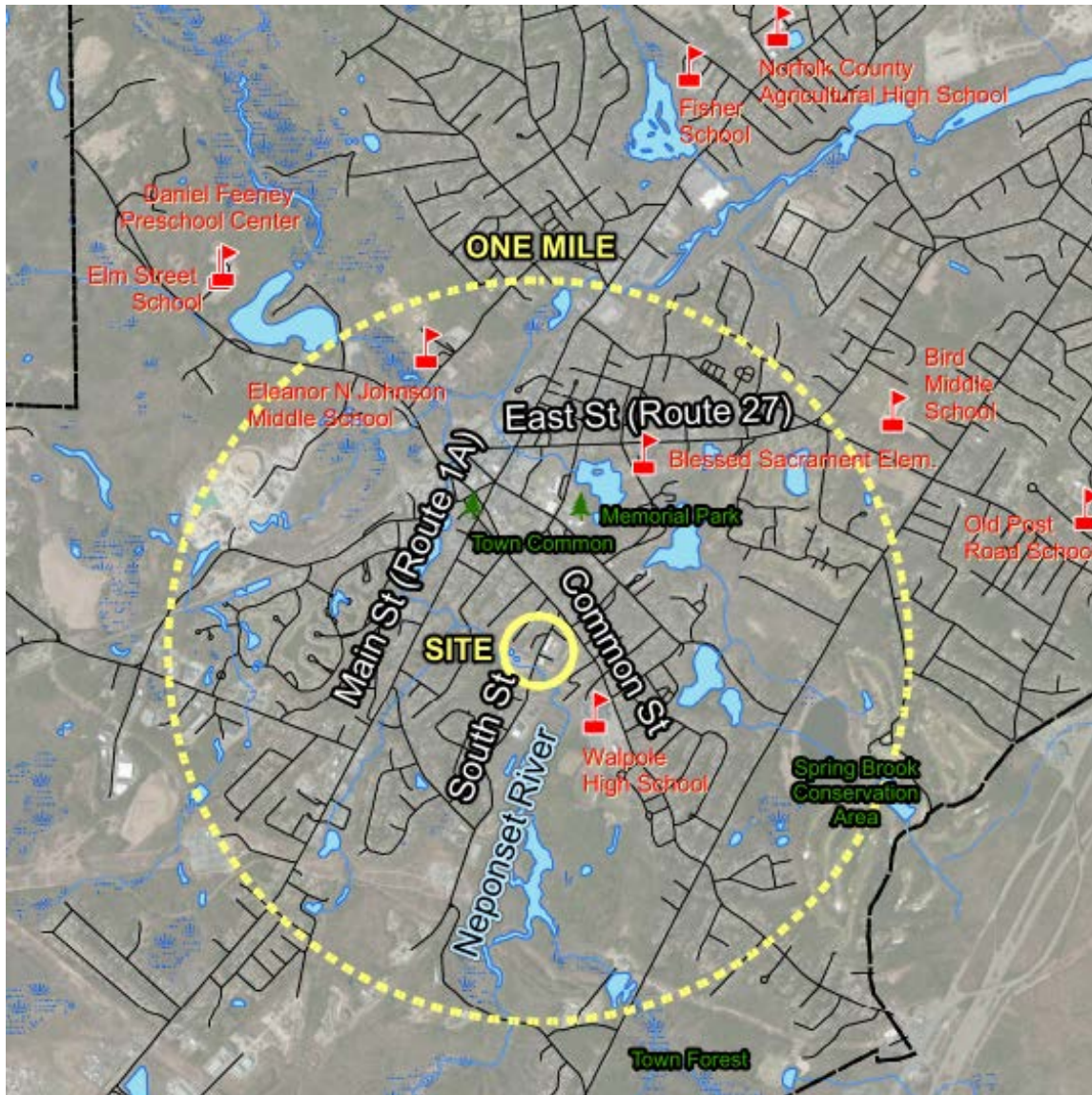
Aerial photo: Prior to 2014

# Overview – Environmental Status

## South Street Superfund Site

April 2016

---



## SITE LOCATION & VICINITY



# Community Benefits



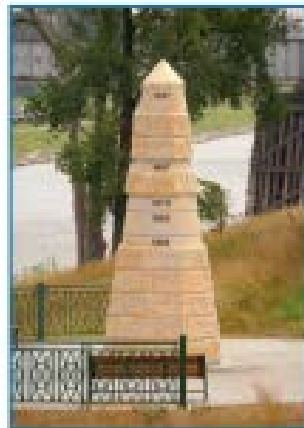
*Linkages to the open space network through*



*More formal areas with furniture and pocket parks*



*More natural areas through woods*



*Historical monument and educational feature explaining the former use and context of the site.*



# Recommended Redevelopment



# SUPERFUND TIMELINE

- 1994 Site added to Superfund Program
- 1999 Administrative Order by Consent Remedial Investigation/Feasibility Study
- 2000-2005 Remedial Design Investigations
- 2006-2007 Asbestos Activity Based Sampling
- 2008 Cleanup plan selected in 'ROD'
- 2009 Removal Action in Former Mill Building
- 2010 Consent Decree with PRPs to perform the cleanup described in the 'Record of Decision'



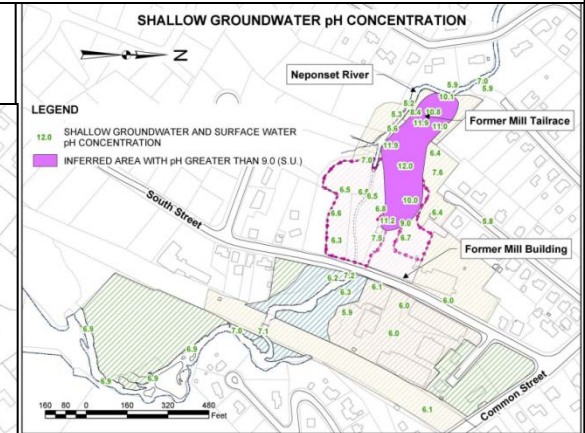
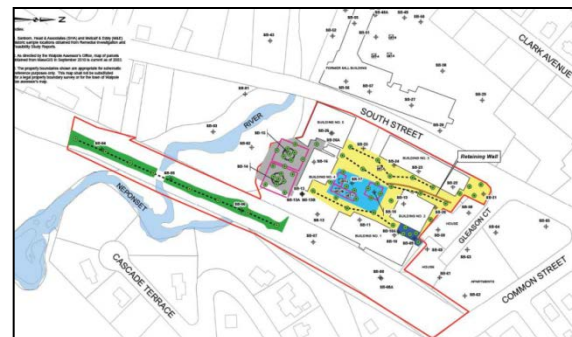
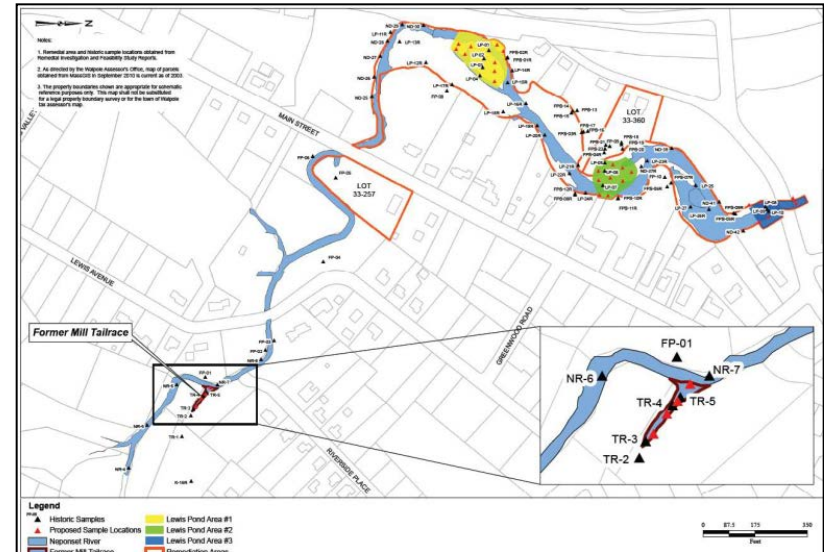


## Responsible Parties

- Tyco Healthcare Group LP (Covidien)
  - WR Grace & Co.-Conn.  
(successor to Dewey and Almy)
  - Shaffer Realty Nominee Trust
  - BIM Investment Corporation
- Responsible Parties finance and conduct \$13 million cleanup
  - Pay EPA past costs and future oversight costs
  - EPA and MassDEP supervise work by RPs

## Remedial Designs Submitted / Approvals Pending

## CONSENT DECREE - 2010



# Characterization & Remediation Planning

## Groundwater

- COC include sodium hydroxide (high pH), metals, VOCs, & PAHs
- Generally limited to the AOC and down gradient areas  
Does not underflow the Neponset River.
- Walpole's water supply wells, Zone II WHPA's, Aquifer Protection Districts are not threatened by impacted groundwater

## Sediment

- Sediment Sampling in Lewis Pond and the Tailrace Area On-site
- Evaluating sediment dredging and dewatering techniques

## Soil

- COC include arsenic, lead, PAHs, asbestos & trichloroethylene.
- West and East of South Street - Characterized separately
- Area of Containment ('burrito') contains hazardous waste  
may remain in place permanently

# Remediation Design Status

## Groundwater Extraction & Treatment

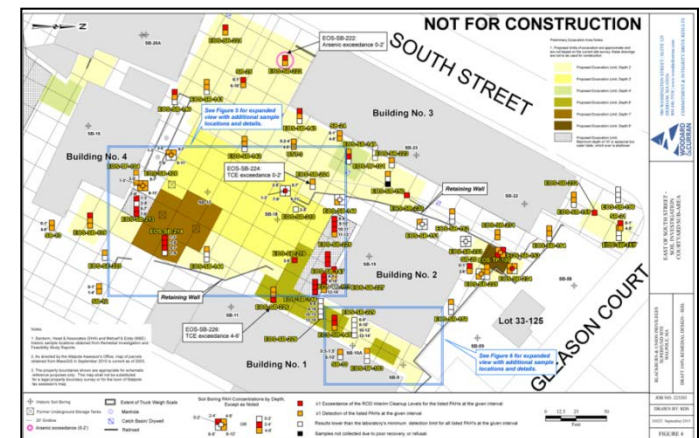
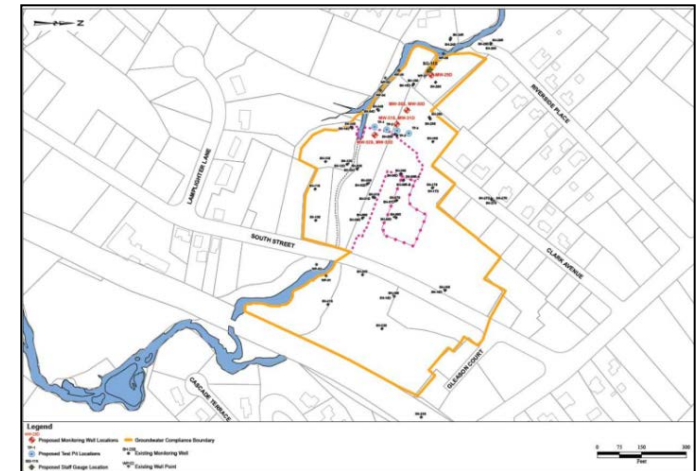
- 100% Design accepted
- RAWP due July 7, 2016  
pending coordination with EPA & PRPs
- Construction start Fall 2016

## Sediment & Floodplain Soil

- 100% Design approved
- Means & methods submittal to be issued by Contractor: Fall 2016

## Soil

- West of South Street – 100 % Design Approved by EPA
- East of South Street – outside building footprints complete Fall 2015
- Design due to EPA May 7, 2016





- ## RP soil removal plan: Summer 2016

