

Figure 6b
Deep Groundwater
Elevation Contours
February 25, 2013

- Deep Well Location
- Deep Groundwater Elevation Contours
- ↓ Vertical Gradient
- Topo Contours
- ▭ Property Boundary
- ▭ River Banks

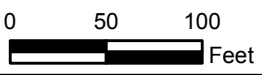
Source: Imagery provided by BING, 2010.
 Elevations are in feet above mean sea level.

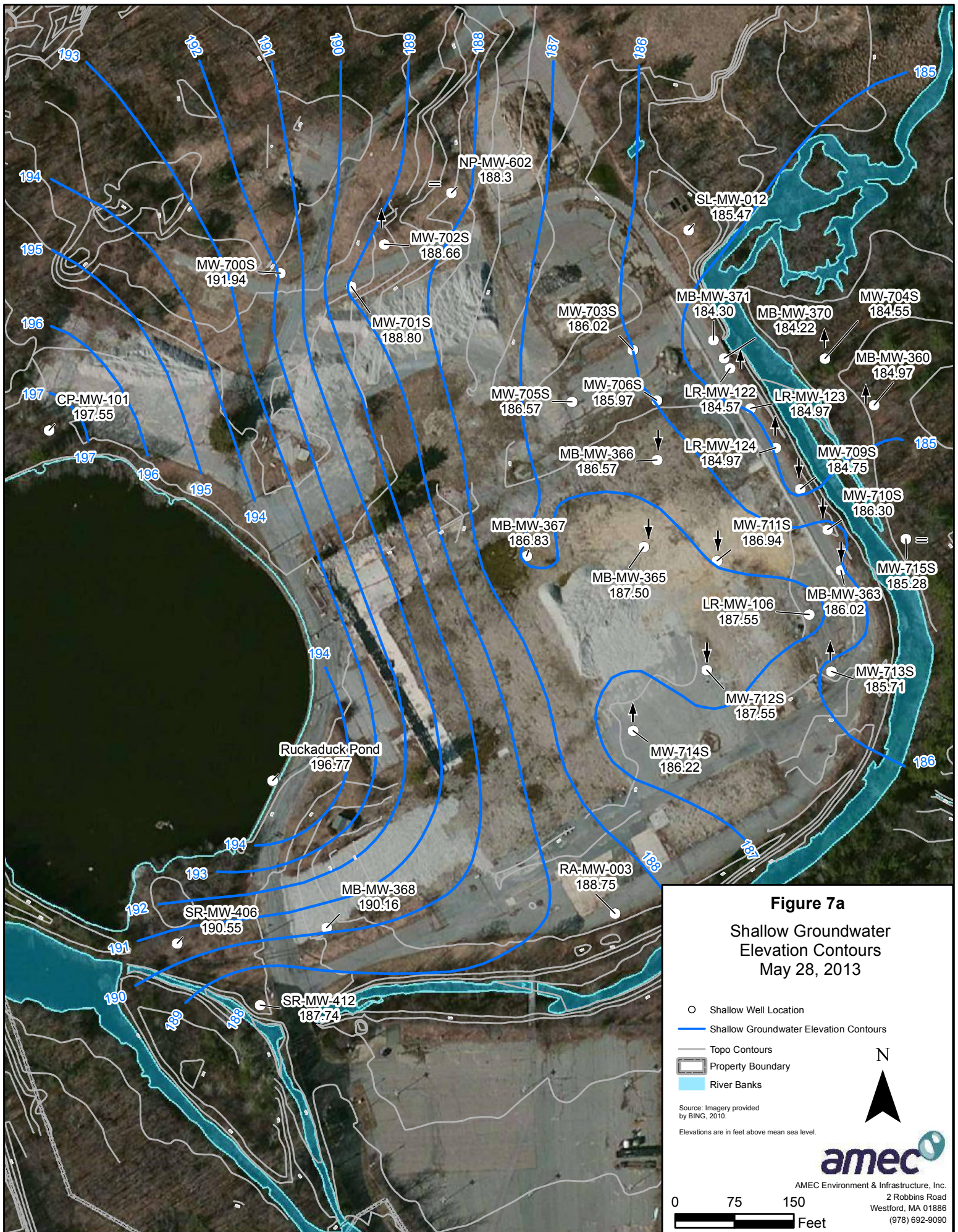
Elevation data for MB-MW-375 unavailable due to snow cover.

The following wells were not included in the kriging process and are shown for display purposes only: NP-MW-601, MW-702B, MW-708B, MW-708D, MW-710B, MW-710M, River-2.



AMEC Environment & Infrastructure, Inc.
 2 Robbins Road
 Westford, MA 01886
 (978) 692-9090





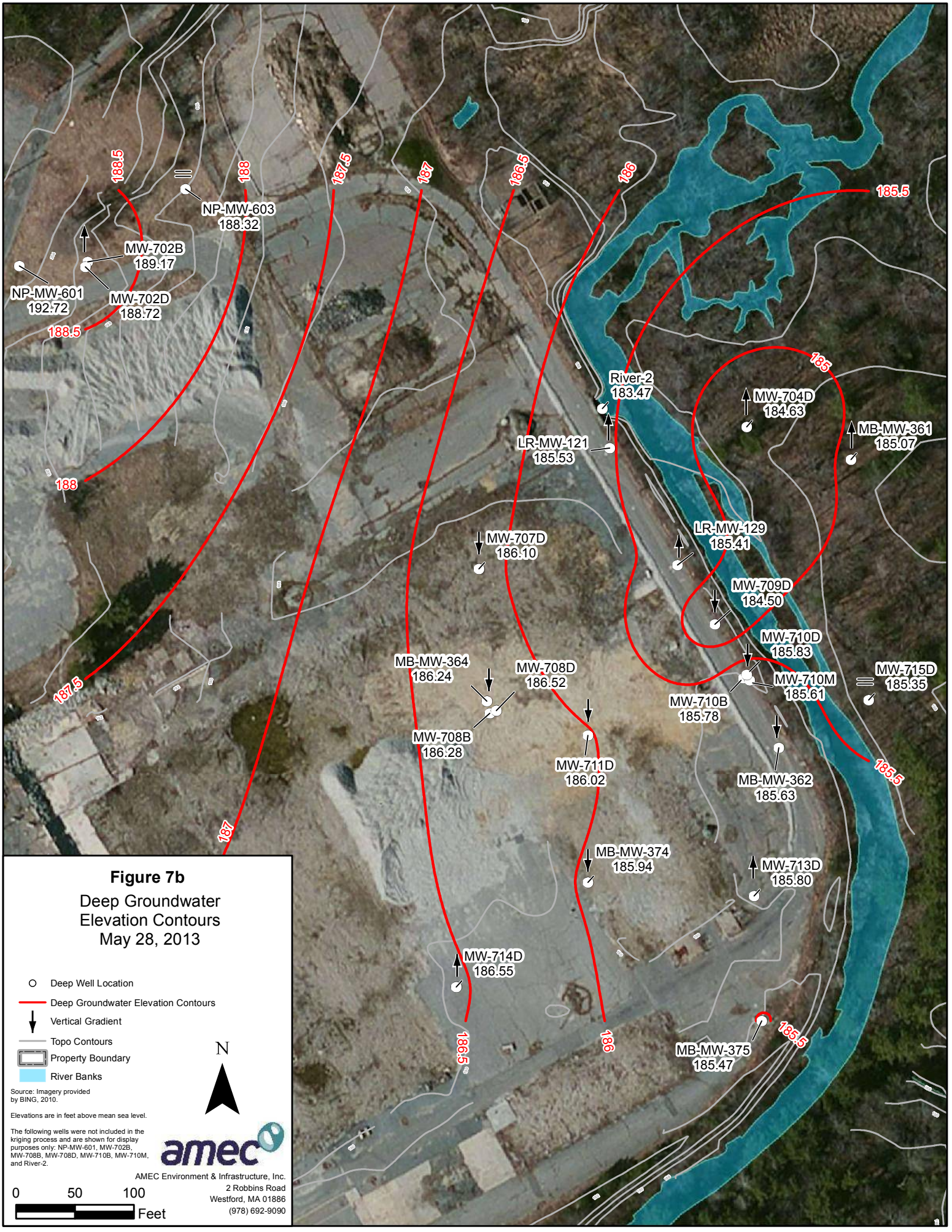


Figure 7b
Deep Groundwater
Elevation Contours
May 28, 2013

- Deep Well Location
- Deep Groundwater Elevation Contours
- ↓ Vertical Gradient
- Topo Contours
- ▭ Property Boundary
- ▭ River Banks

Source: Imagery provided by BING, 2010.
 Elevations are in feet above mean sea level.

The following wells were not included in the kriging process and are shown for display purposes only: NP-MW-601, MW-702B, MW-708B, MW-708D, MW-710B, MW-710M, and River-2.



AMEC Environment & Infrastructure, Inc.
 2 Robbins Road
 Westford, MA 01886
 (978) 692-9090

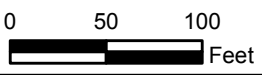
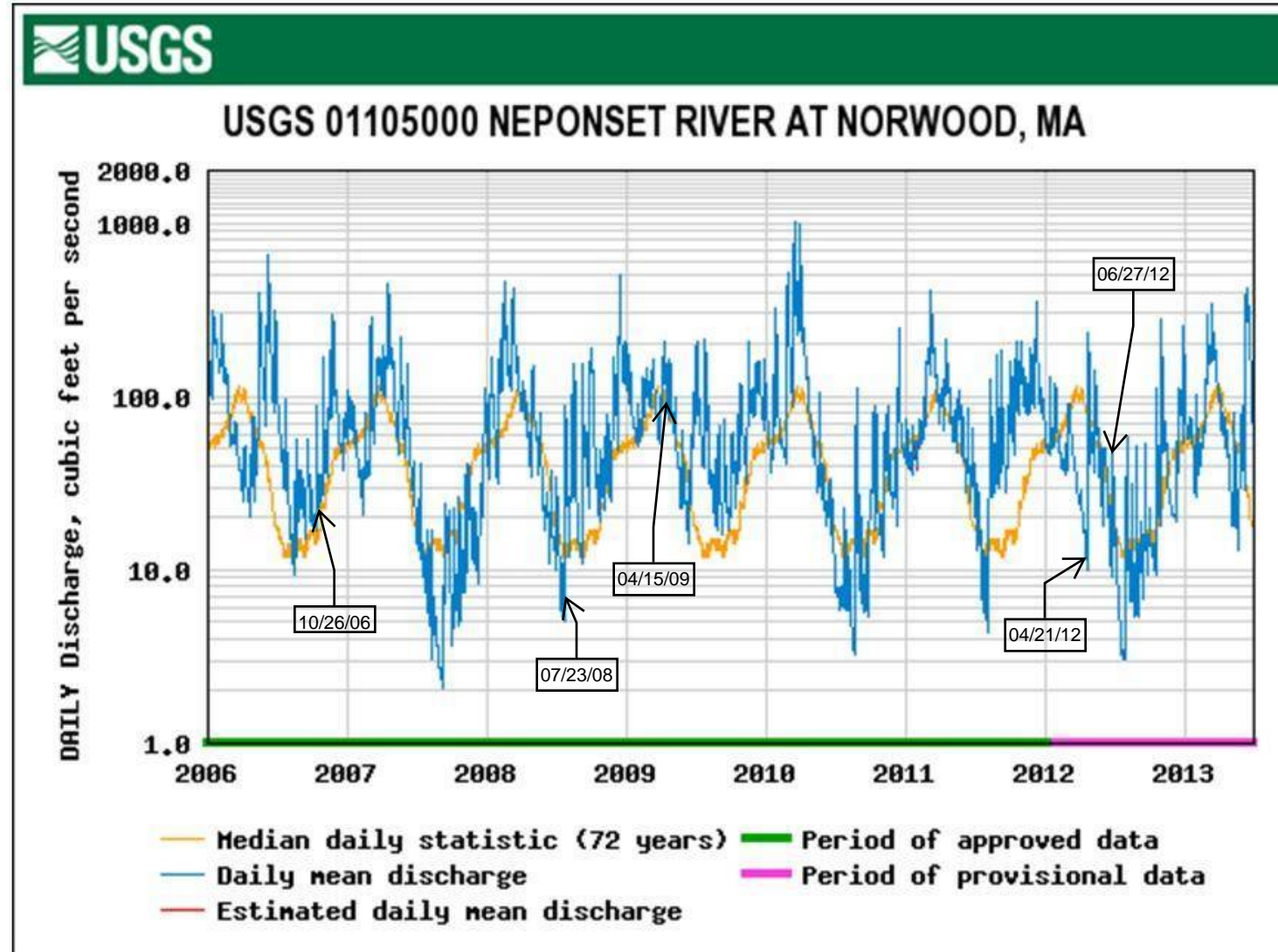
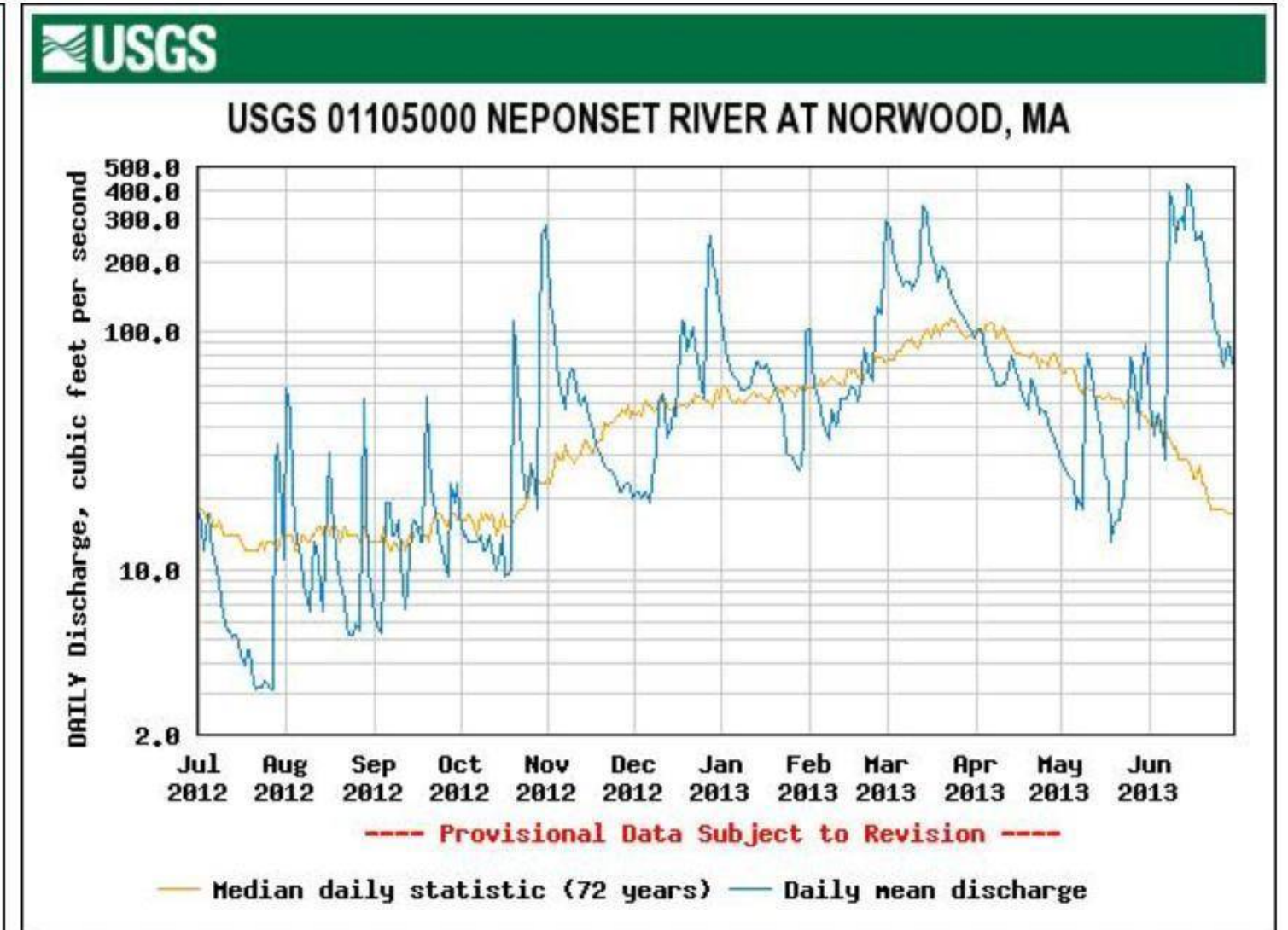


Figure 8. USGS Hydrographs for the Neponset River



2006 to 2013 Daily Discharge



July 2012 through June 2013 Daily Discharge

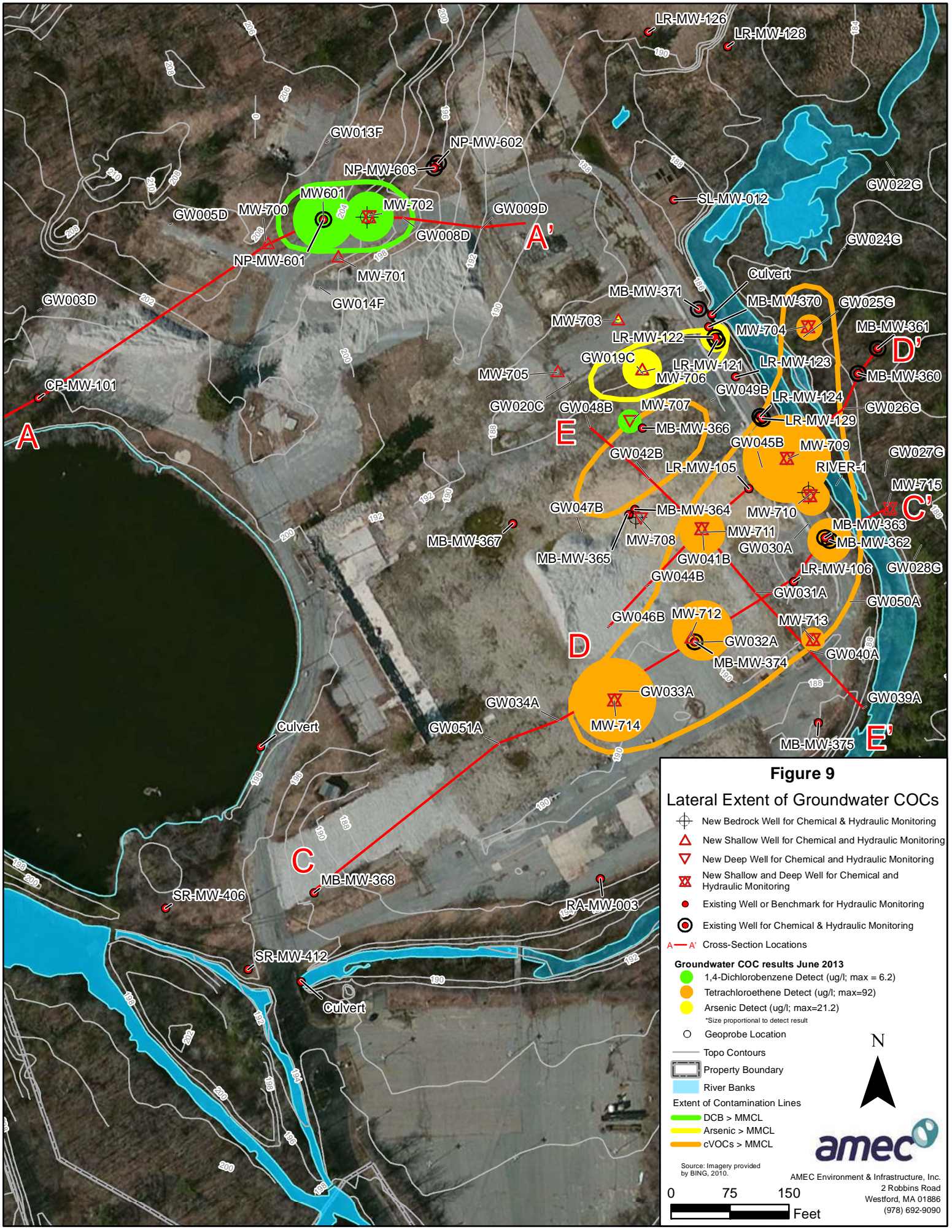


Figure 9

Lateral Extent of Groundwater COCs

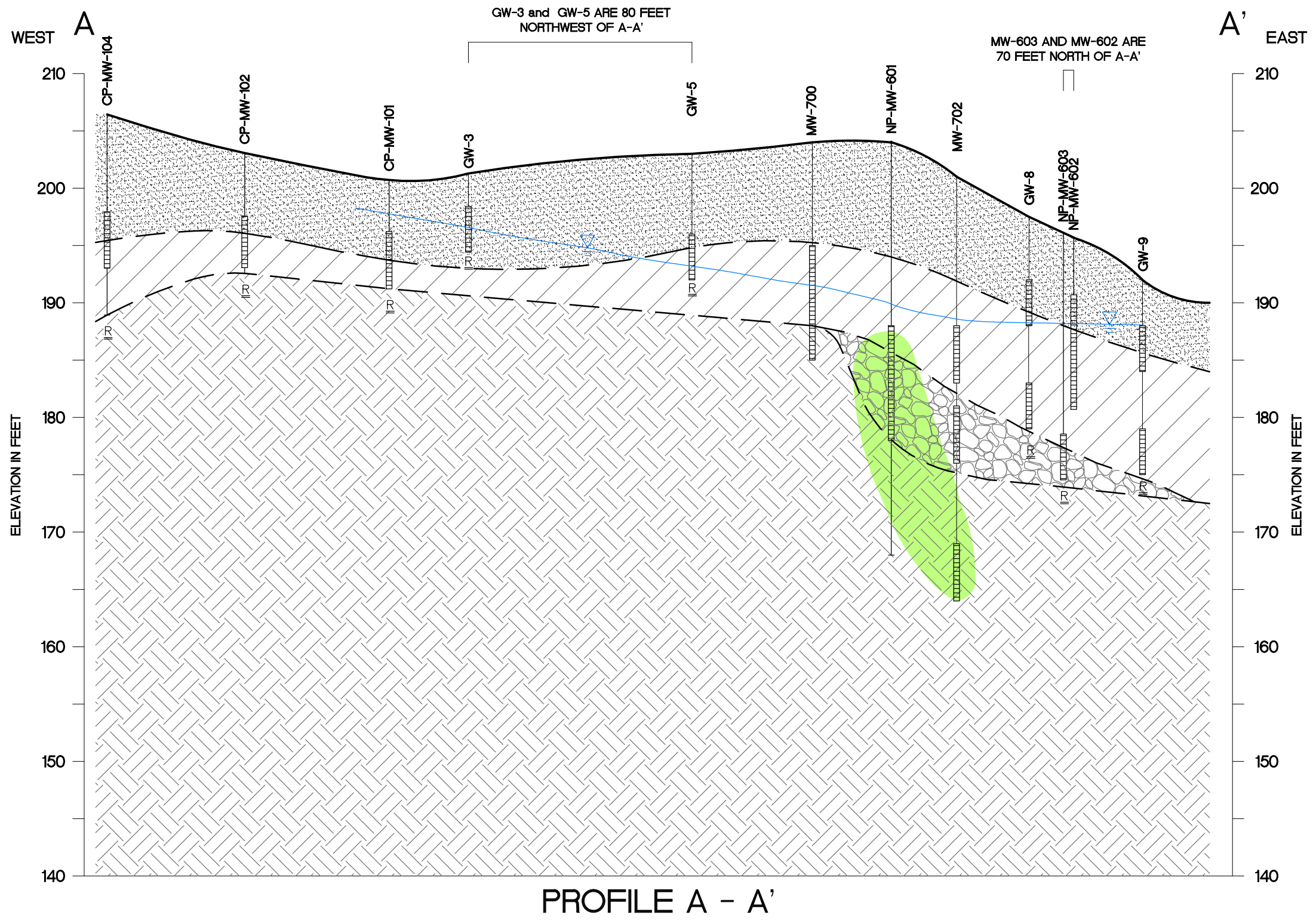
- ⊕ New Bedrock Well for Chemical & Hydraulic Monitoring
- △ New Shallow Well for Chemical and Hydraulic Monitoring
- ▽ New Deep Well for Chemical and Hydraulic Monitoring
- ⊗ New Shallow and Deep Well for Chemical and Hydraulic Monitoring
- Existing Well or Benchmark for Hydraulic Monitoring
- ⊙ Existing Well for Chemical & Hydraulic Monitoring
- A—A' Cross-Section Locations

- Groundwater COC results June 2013**
- 1,4-Dichlorobenzene Detect (ug/l; max = 6.2)
 - Tetrachloroethene Detect (ug/l; max=92)
 - Arsenic Detect (ug/l; max=21.2)
 - *Size proportional to detect result
 - Geoprobe Location
 - Topo Contours
 - ▭ Property Boundary
 - ▭ River Banks
 - Extent of Contamination Lines
 - DCB > MMCL
 - Arsenic > MMCL
 - cVOCs > MMCL

Source: Imagery provided by BING, 2010.

AMEC Environment & Infrastructure, Inc.
 2 Robbins Road
 Westford, MA 01886
 (978) 692-9090

0 75 150 Feet

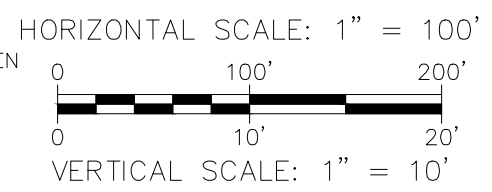


PROFILE A - A'

- SAND
- SILTY SAND
- SILTY SAND & GRAVEL
- BEDROCK

- ESTIMATED AREA OF DCB > MMCL
- GW-3** TEMPORARY GROUNDWATER MONITORING POINT
- MB-MW-125** MONITORING WELL LOCATION
- MAY 2013 GROUNDWATER LEVEL
- SOIL HORIZON TRANSITION
- GROUND SURFACE

- MONITORING WELL SCREEN
- REFUSAL



ENVIRONMENT & INFRASTRUCTURE, INC
 2 Robbins Road
 Westford, MA 01886

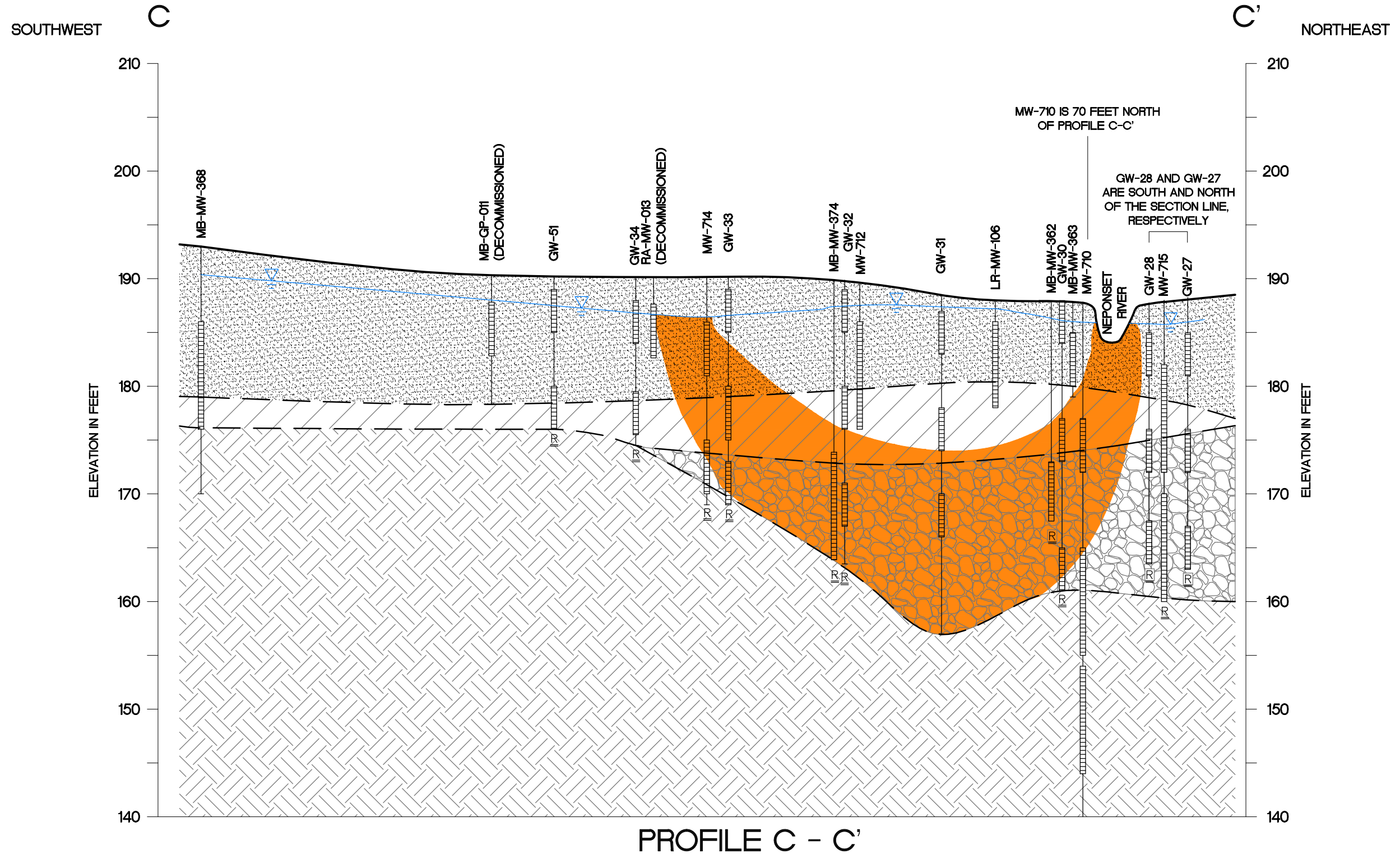
GEOLOGIC CROSS SECTION A-A'
 BIRD MACHINE
 WALPOLE, MASSACHUSETTS

DRAWN BY: DED
 REVIEWED BY: MG

DATE:
 12/14/12

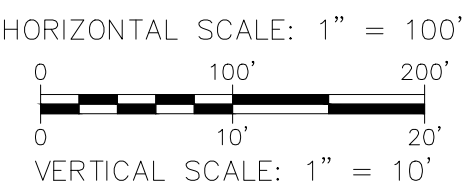
FIGURE 10

FILE: U:\DEPT-EGNR\BIRD MACHINE\2012-12-12-13\Brd Machine 11X17 Size Cross Sections 2013-07-26.dwg BY: dana.dempsey



PROFILE C - C'

	SAND		ESTIMATED AREA OF CVOCs > MMCL
	SILTY SAND		TEMPORARY GROUNDWATER MONITORING POINT
	SILTY SAND & GRAVEL		MONITORING WELL LOCATION
	BEDROCK		MAY 2013 GROUNDWATER LEVEL
			SOIL HORIZON TRANSITION
			GROUND SURFACE
			MONITORING WELL SCREEN
			REFUSAL



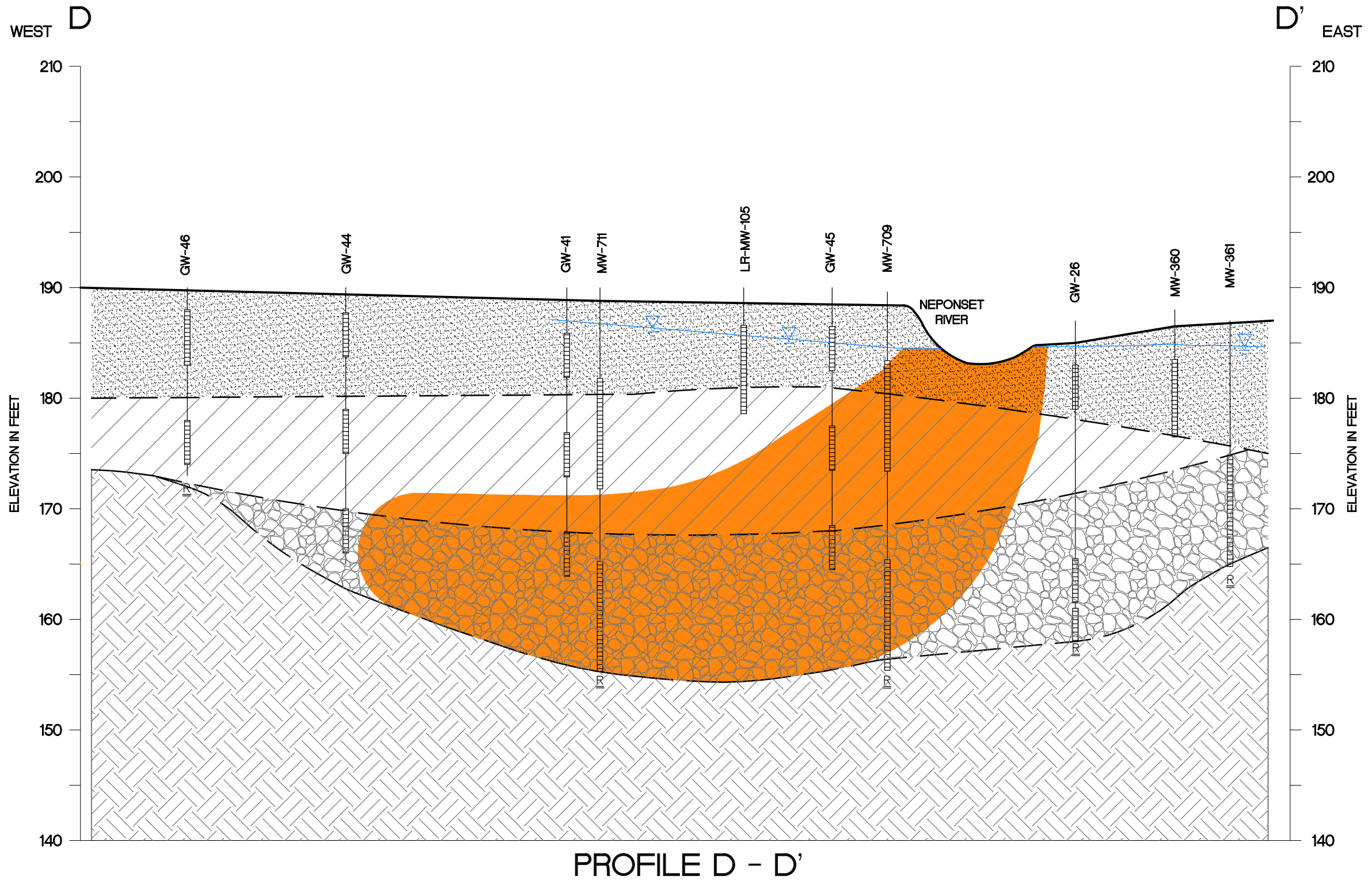
GEOLOGIC CROSS SECTION C-C'
BIRD MACHINE
WALPOLE, MASSACHUSETTS

ENVIRONMENT & INFRASTRUCTURE, INC
2 Robbins Road
Westford, MA 01886

DRAWN BY: KTH
REVIEWED BY: TEH

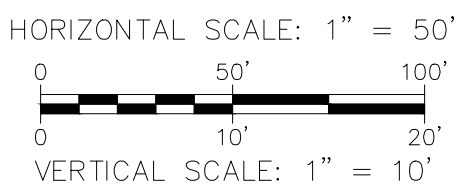
DATE:
12/14/12

FIGURE 11



PROFILE D - D'

- SAND
- SILTY SAND
- SILTY SAND & GRAVEL
- BEDROCK
- ESTIMATED AREA OF CVOCs > MMCL
- TEMPORARY GROUNDWATER MONITORING POINT
- MONITORING WELL LOCATION
- MAY 2013 GROUNDWATER LEVEL
- SOIL HORIZON TRANSITION
- GROUND SURFACE
- MONITORING WELL SCREEN
- REFUSAL



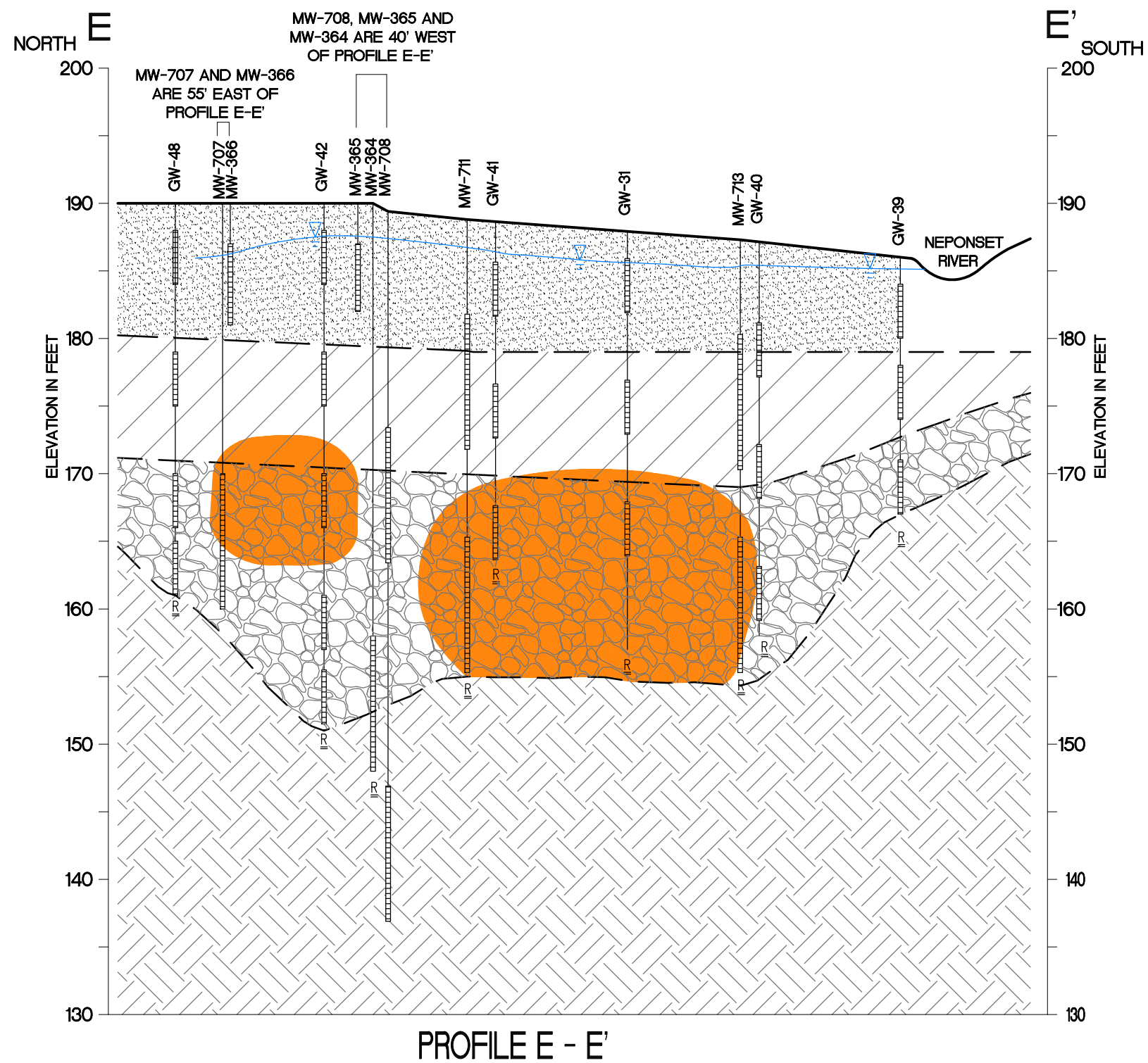
ENVIRONMENT & INFRASTRUCTURE, INC
 2 Robbins Road
 Westford, MA 01886

GEOLOGIC CROSS SECTION D-D'
 BIRD MACHINE
 WALPOLE, MASSACHUSETTS

DRAWN BY: DED	DATE: 12/14/12
REVIEWED BY: TEH	

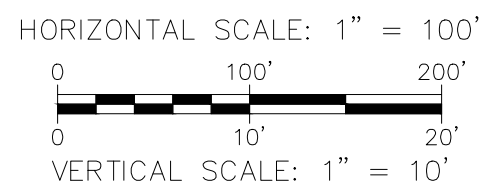
FIGURE 12

FILE: U:\DEPT-EGNR\BIRD MACHINE\2012-12-12\13\Bird Machine 11X17 Size Cross Sections 2013-07-07-26.dwg BY: dana.dempsey



- SAND
- SILTY SAND
- SILTY SAND & GRAVEL
- BEDROCK

- ESTIMATED AREA OF CVOCs > MMCL
- GW-3** TEMPORARY GROUNDWATER MONITORING POINT
- MB-MW-125** MONITORING WELL LOCATION
- MAY 2013 GROUNDWATER LEVEL
- SOIL HORIZON TRANSITION
- GROUND SURFACE
- MONITORING WELL SCREEN
- REFUSAL



ENVIRONMENT & INFRASTRUCTURE, INC
2 Robbins Road
Westford, MA 01886

GEOLOGIC CROSS SECTION E-E'
BIRD MACHINE
WALPOLE, MASSACHUSETTS

DRAWN BY: DED	DATE: 12/14/12
REVIEWED BY: TEH	

FIGURE 13

Figure 14
NP-MW-601 DCB/TCB Concentrations vs. Time

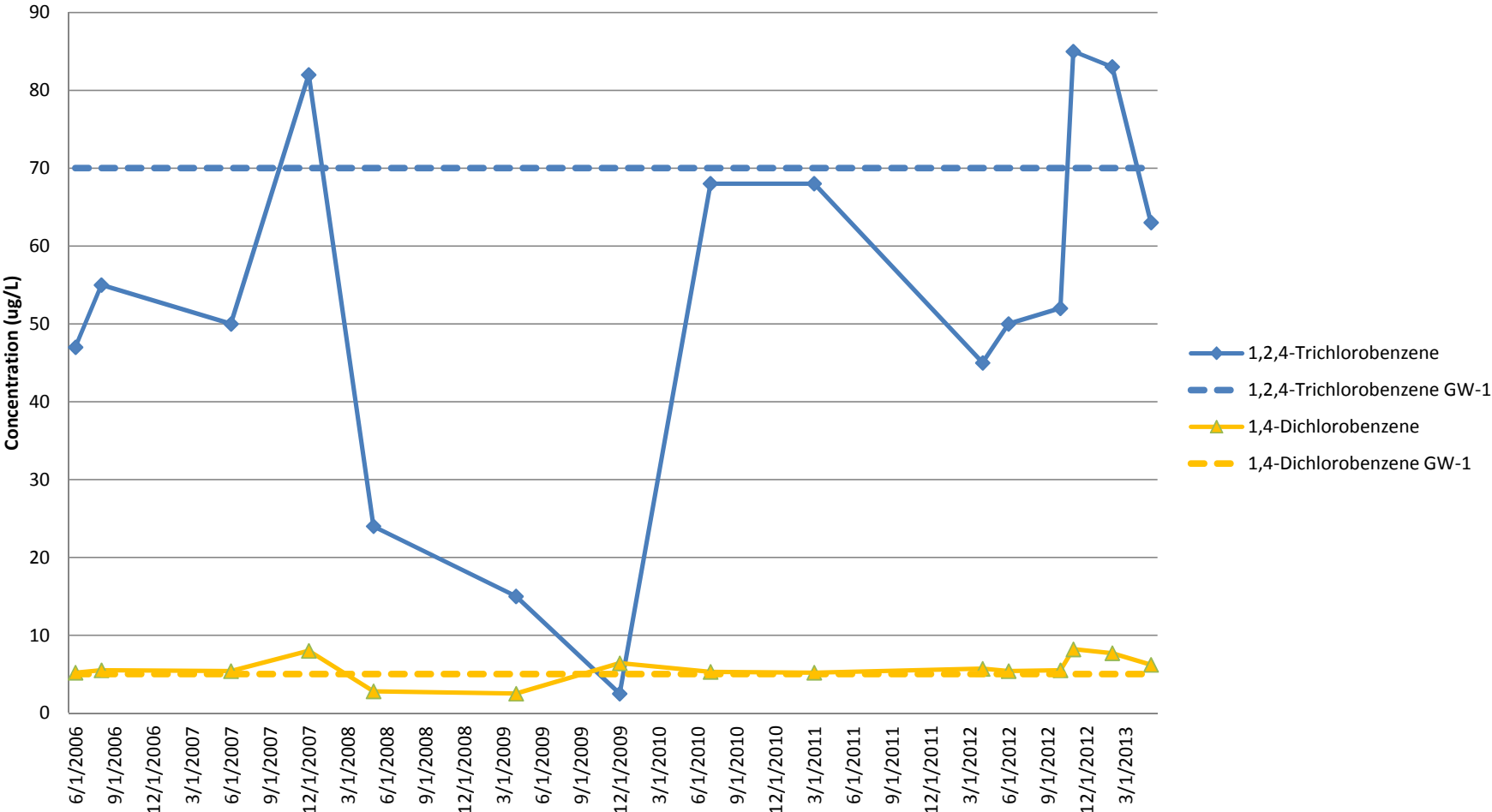


Figure 15
MW-702B DCB/TCB Concentrations vs. Time

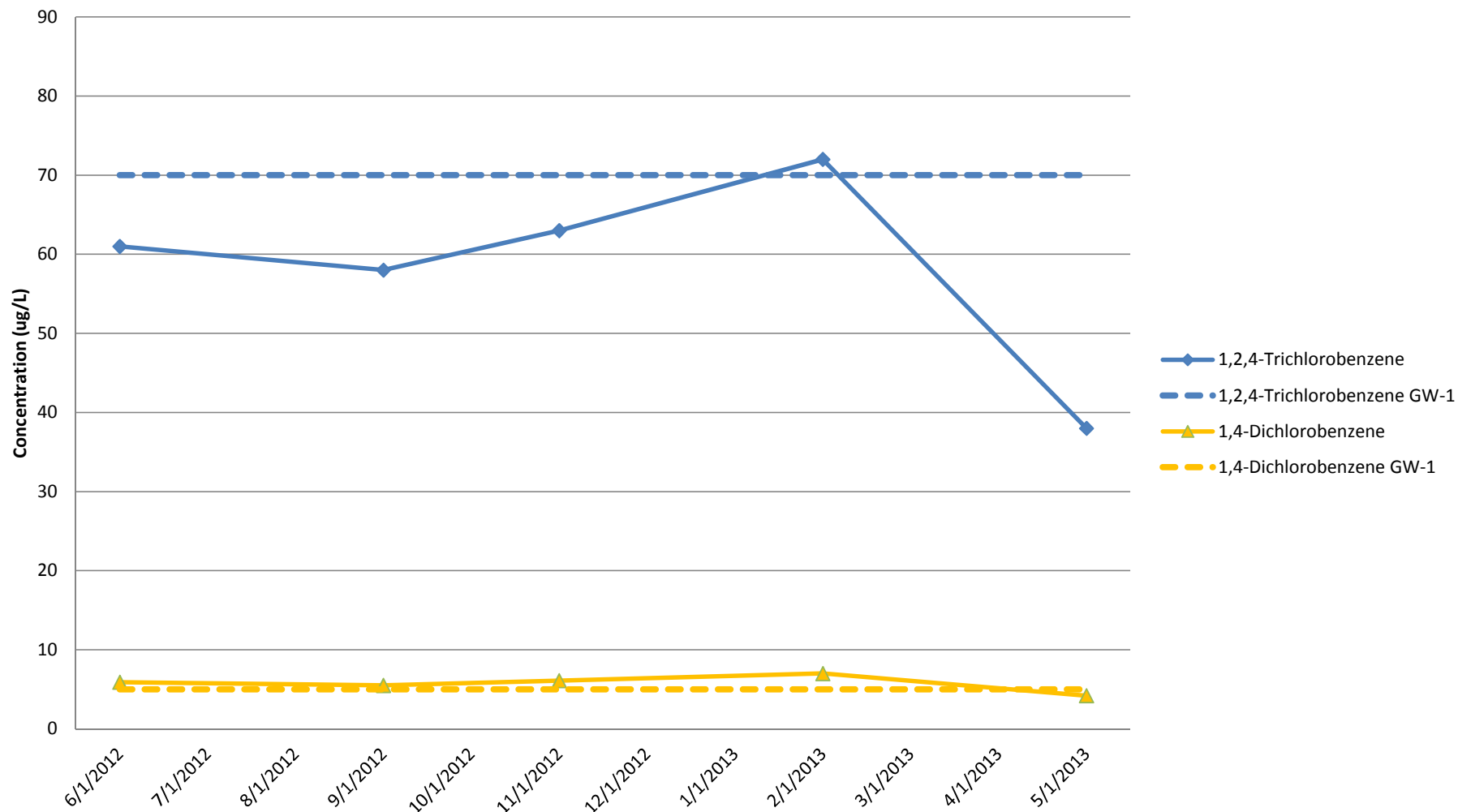


Figure 16
LR-MW-122 Arsenic Concentrations vs. Time

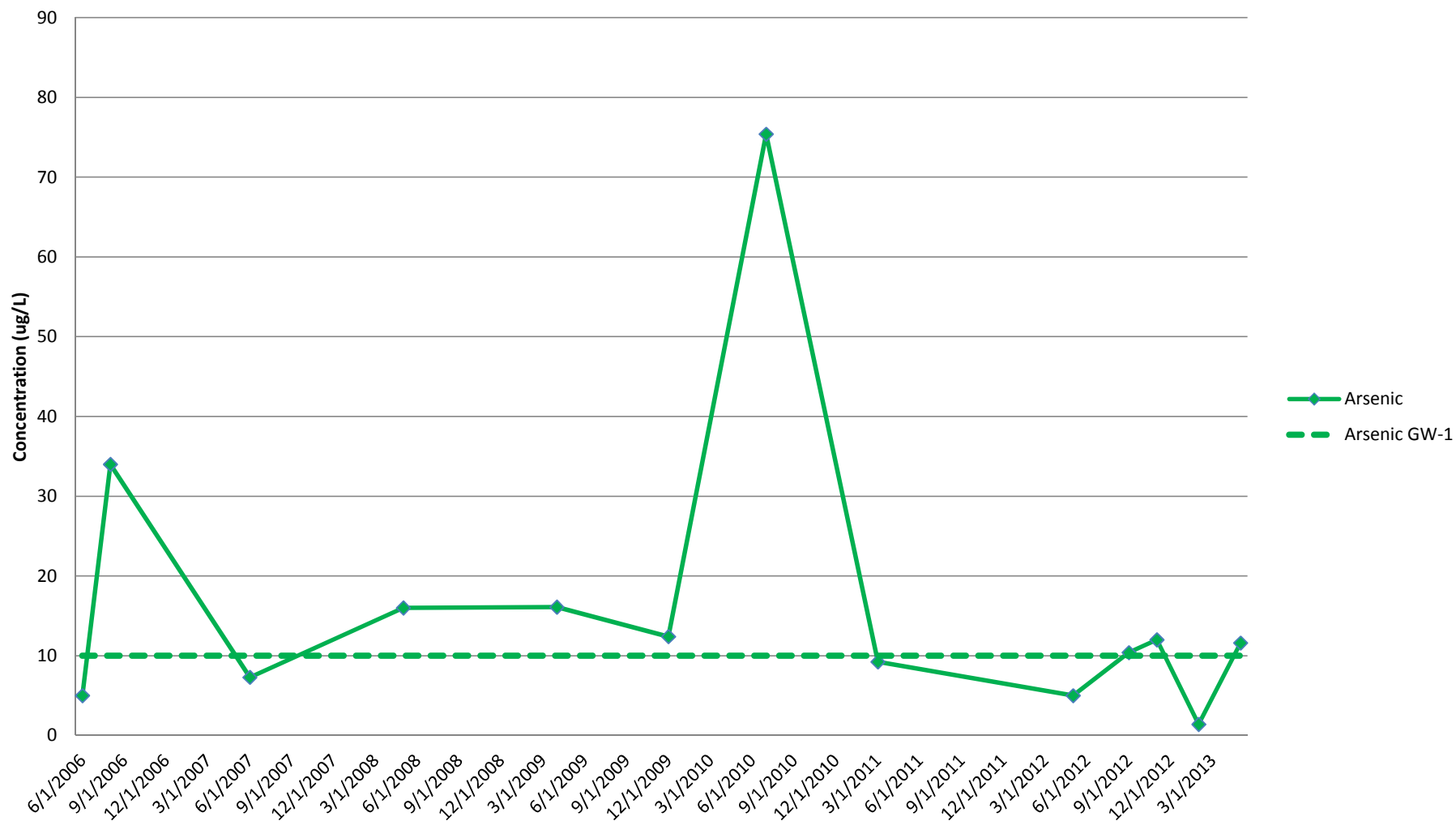


Figure 17
MW-706S Arsenic Concentrations vs. Time

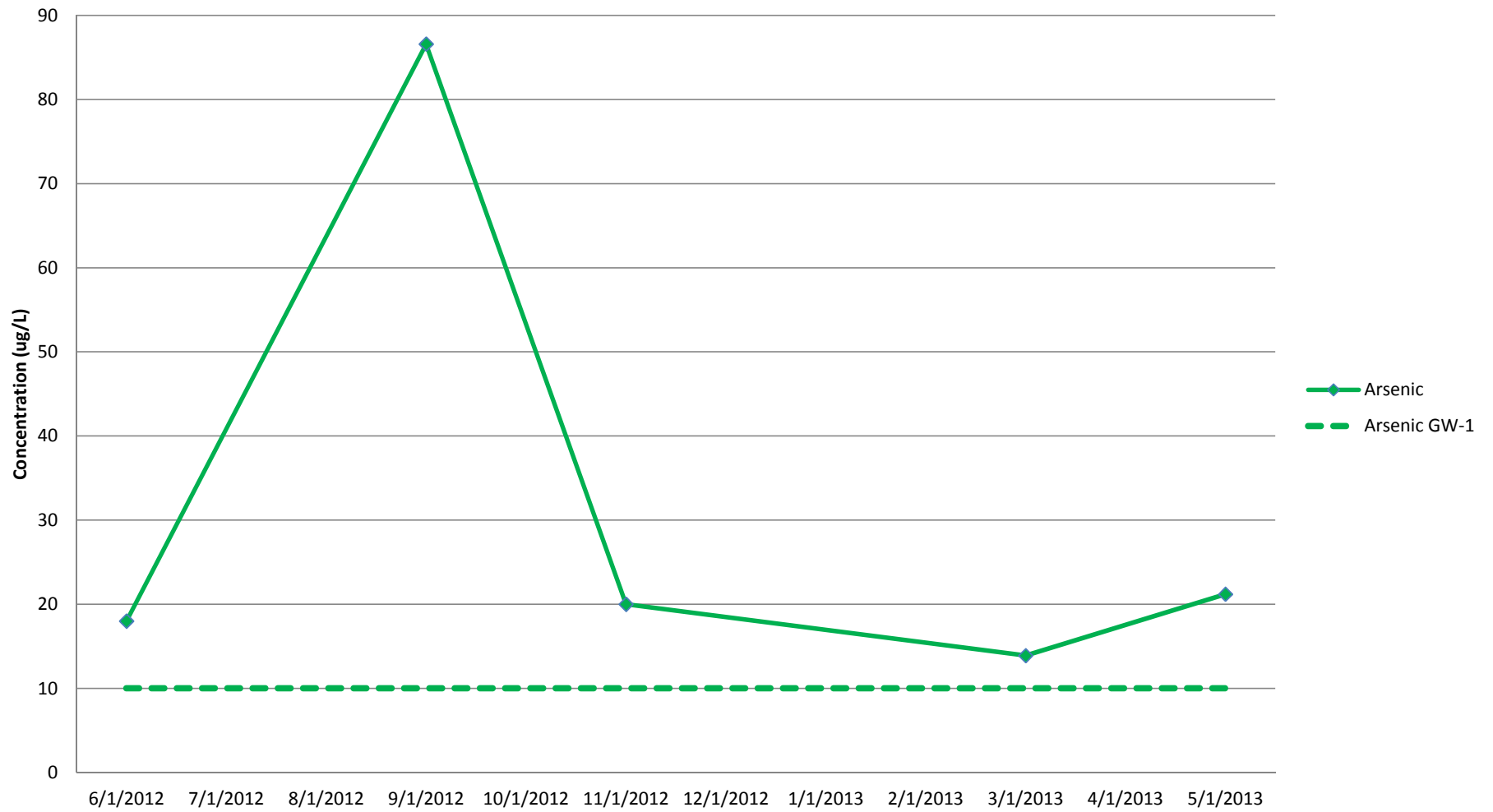


Figure 18
LR-MW-129 cVOC Concentrations vs. Time

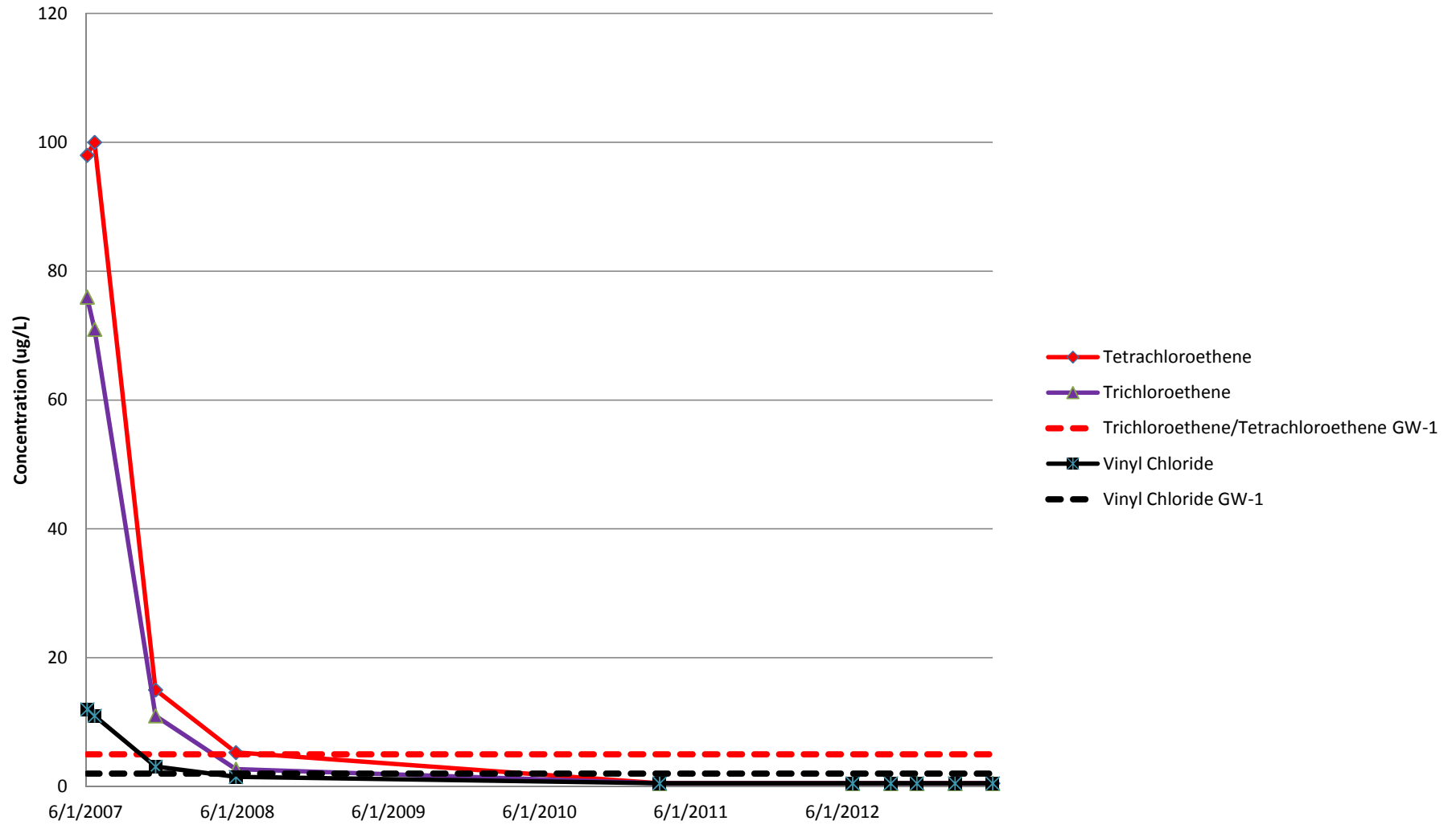


Figure 19
MB-MW-362 cVOC Concentrations vs. Time

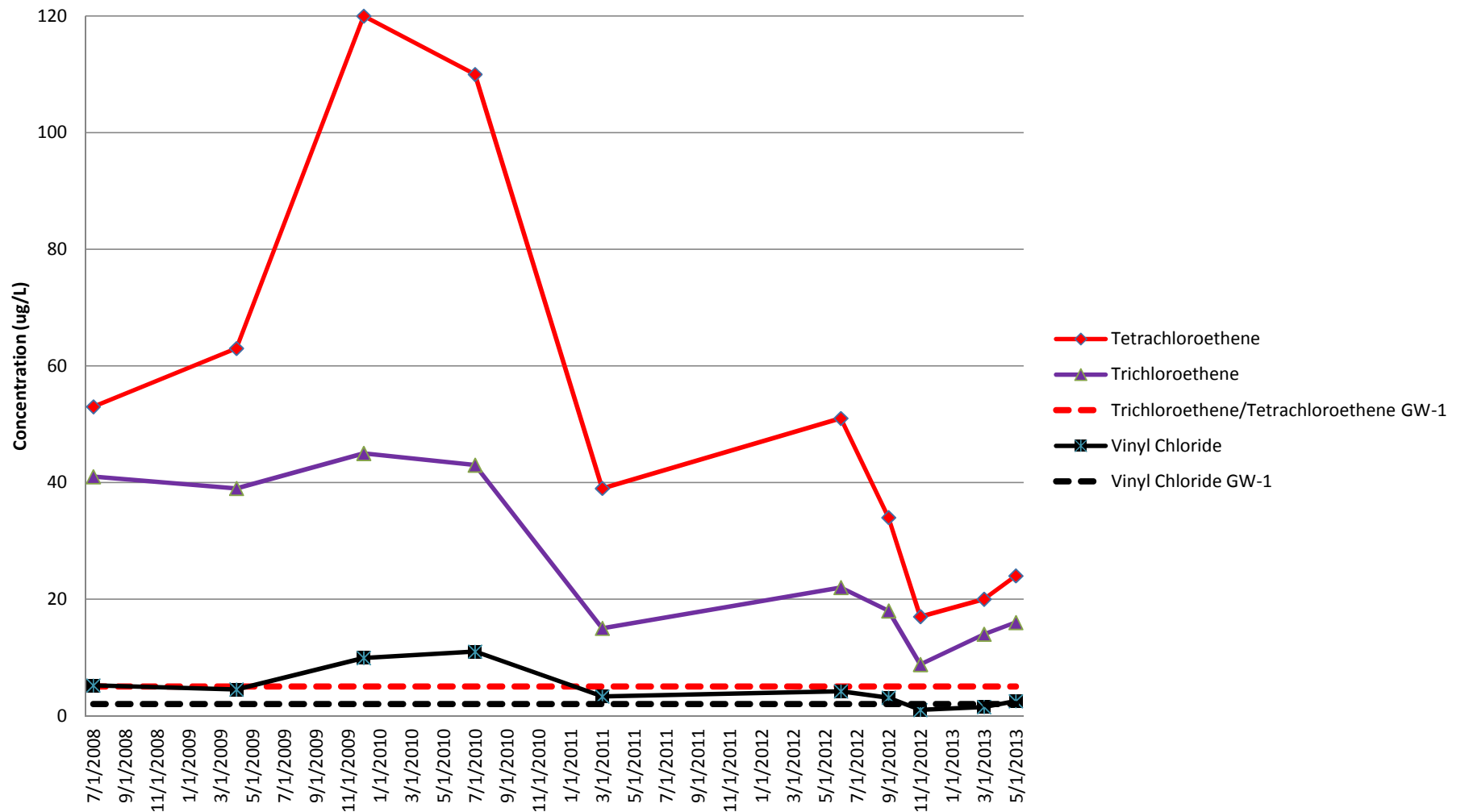


Figure 20
MB-MW-374 cVOC Concentrations vs. Time

