



HOWARD STEIN HUDSON
 114 Turnpike Road, Suite 2C
 Chelmsford, MA 01824
 www.hshassoc.com

PREPARED FOR:
 FRH REALTY LLC
 c/o FAIRFIELD RESIDENTIAL
 5 BURLINGTON WOODS, SUITE 203
 BURLINGTON, MA 01803

**PROPOSED MULTIFAMILY
 DEVELOPMENT
 SUMMER STREET
 WALPOLE, MA**

REVISIONS:

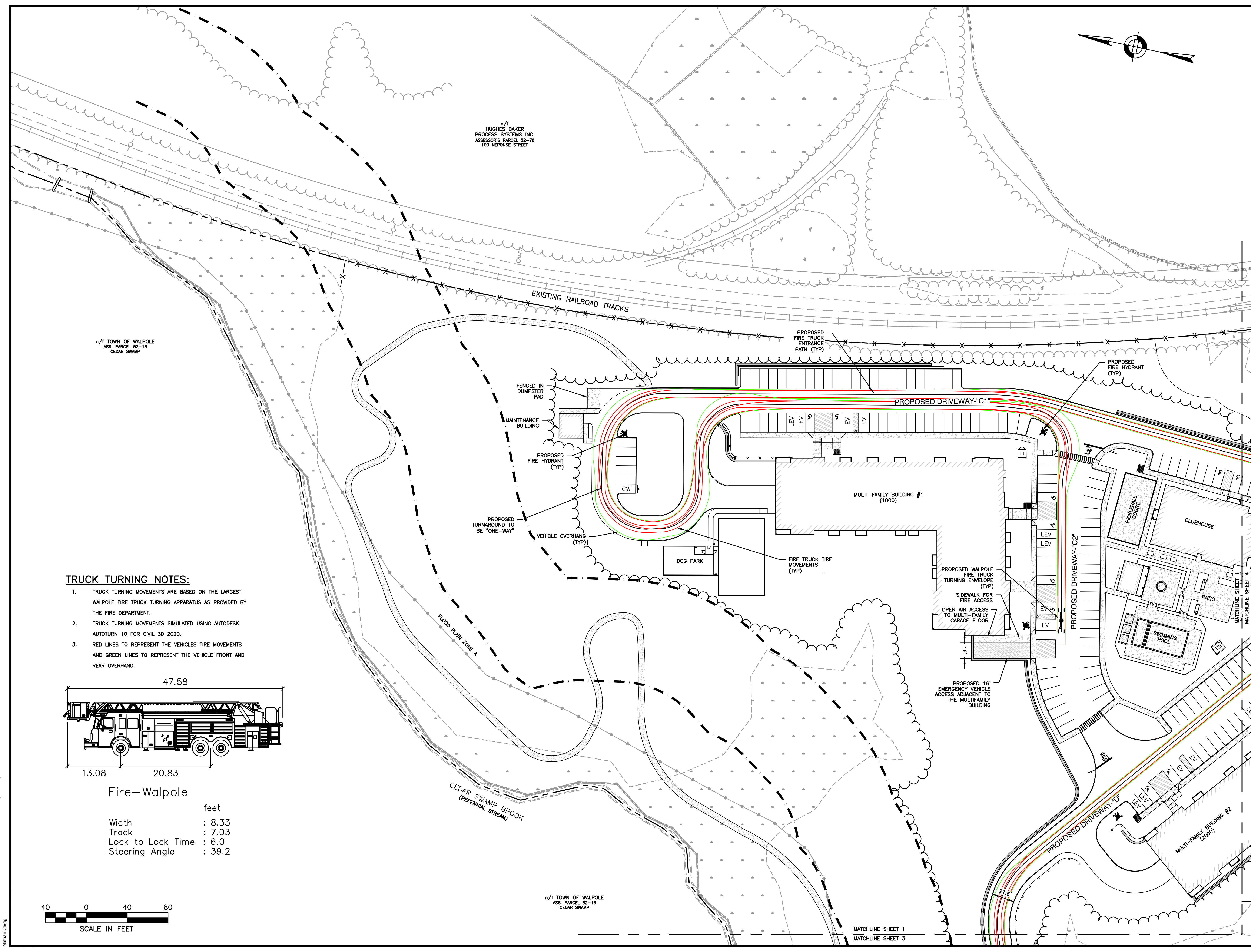
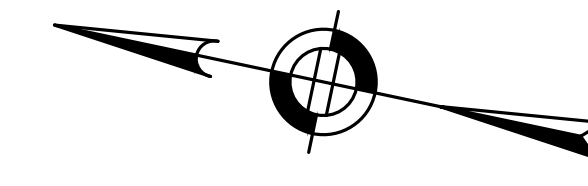
NO	BY	DATE	DESCRIPTION



SITE
PLAN

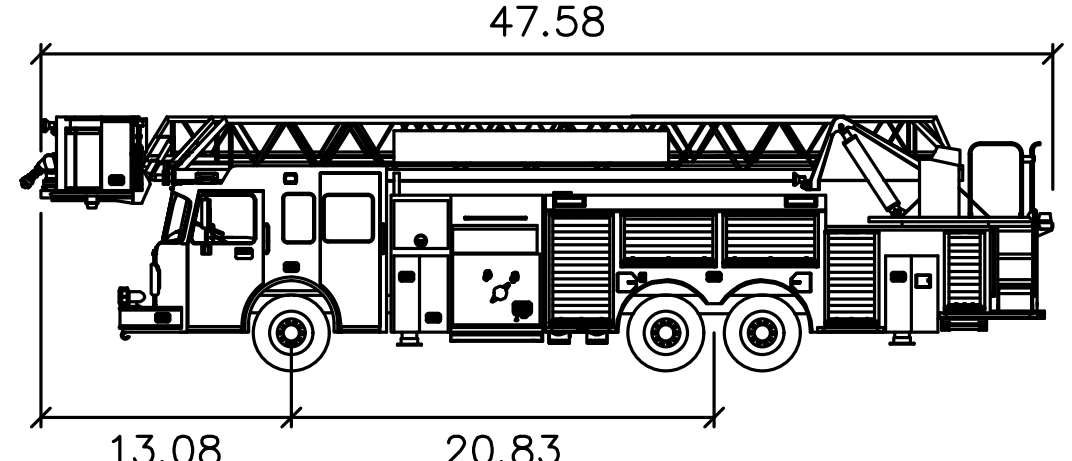
TRUCK TURNING
PLAN 1 OF 9

DATE:	JUNE 20, 2023
PROJECT NUMBER:	19097
DESIGNED BY:	PB/KE/KF
DRAWN BY:	PB/MB/KF/KL
CHECKED BY:	KE
	C.1



TRUCK TURNING NOTES:

1. TRUCK TURNING MOVEMENTS ARE BASED ON THE LARGEST WALPOLE FIRE TRUCK TURNING APPARATUS AS PROVIDED BY THE FIRE DEPARTMENT.
2. TRUCK TURNING MOVEMENTS SIMULATED USING AUTODESK AUTOTURN 10 FOR CIVIL 3D 2020.
3. RED LINES TO REPRESENT THE VEHICLES TIRE MOVEMENTS AND GREEN LINES TO REPRESENT THE VEHICLE FRONT AND REAR OVERHANG.



Fire-Walpole

	feet
Width	: 8.33
Track	: 7.03
Lock to Lock Time	: 6.0
Steering Angle	: 39.2



6/20/2023 L:\19097\19097_04 - Lot 2\CURRENT\19097 - Vehicle Turning Plan.dwg
 Nathan Cheng



HOWARD STEIN HUDSON
 114 Turnpike Road, Suite 2C
 Chelmsford, MA 01824
 www.hshassoc.com

PREPARED FOR:
 FRH REALTY LLC
 c/o FAIRFIELD RESIDENTIAL
 5 BURLINGTON WOODS, SUITE 203
 BURLINGTON, MA 01803

**PROPOSED MULTIFAMILY
 DEVELOPMENT
 SUMMER STREET
 WALPOLE, MA**

REVISIONS:

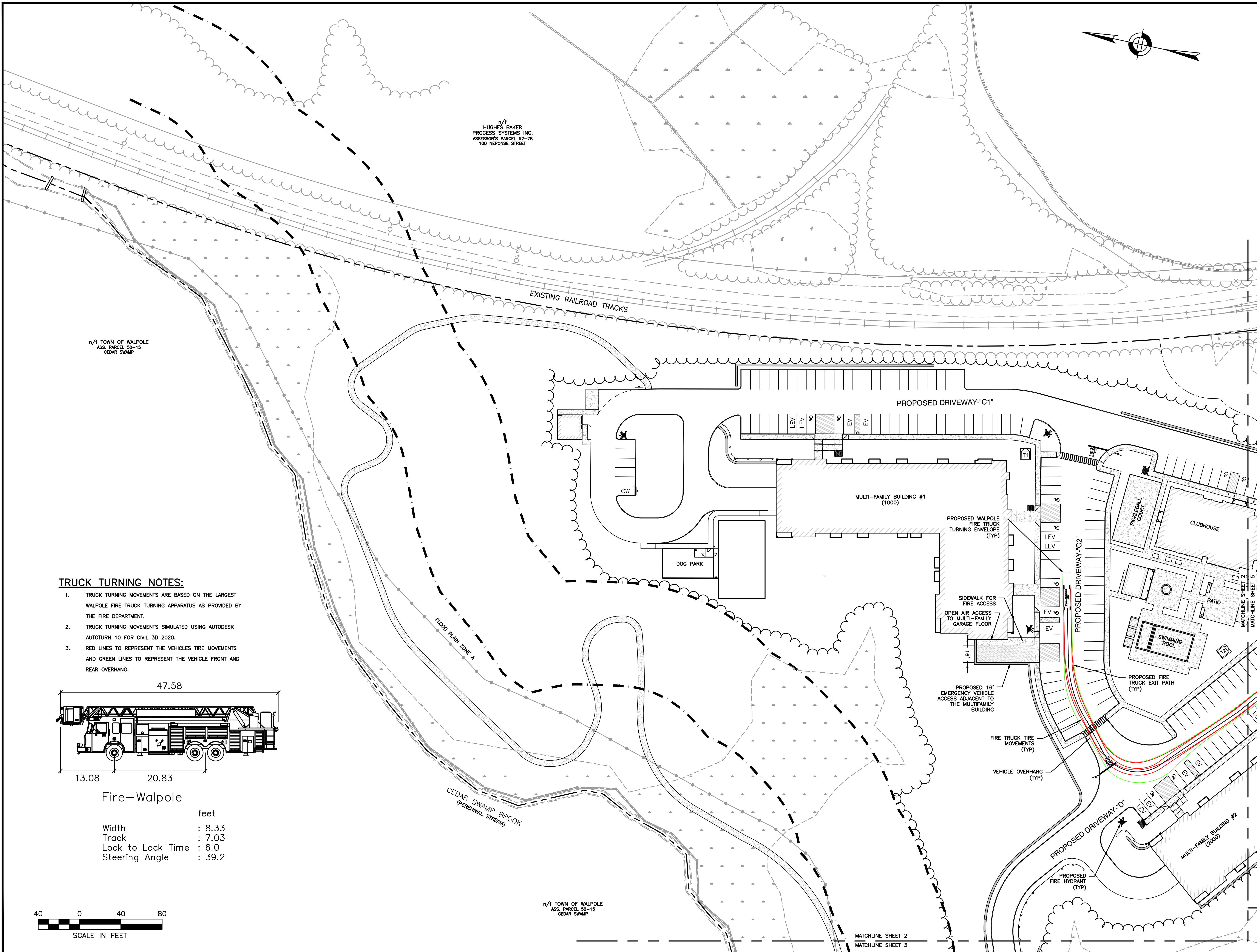
NO	BY	DATE	DESCRIPTION



SITE PLAN

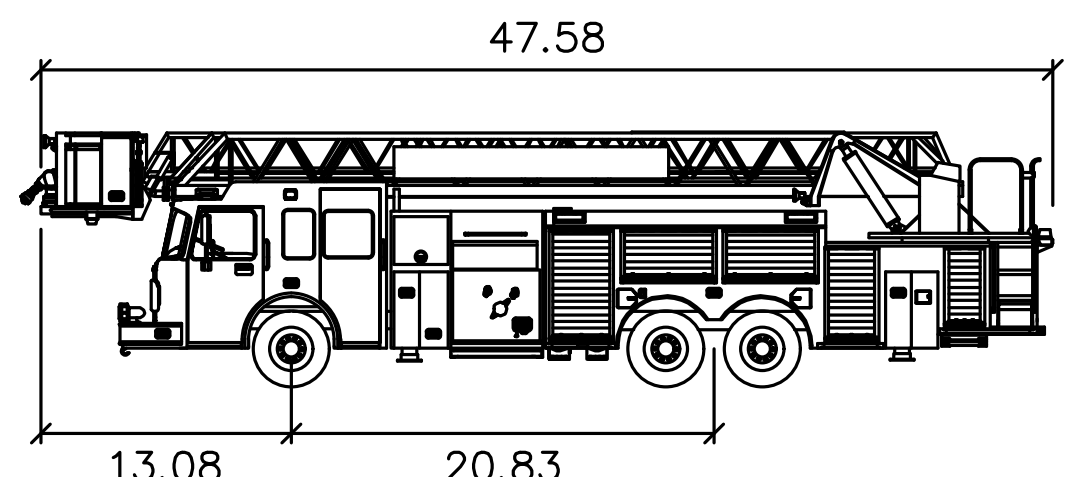
TRUCK TURNING
 PLAN 2 OF 9

DATE:	JUNE 20, 2023
PROJECT NUMBER:	19097
DESIGNED BY:	PB/KE/KF
DRAWN BY:	PB/MB/KF/KL
CHECKED BY:	KE
	C.2
	SHEET 2 OF 9



TRUCK TURNING NOTES:

1. TRUCK TURNING MOVEMENTS ARE BASED ON THE LARGEST WALPOLE FIRE TRUCK TURNING APPARATUS AS PROVIDED BY THE FIRE DEPARTMENT.
2. TRUCK TURNING MOVEMENTS SIMULATED USING AUTODESK AUTOTURN 10 FOR CIVIL 3D 2020.
3. RED LINES TO REPRESENT THE VEHICLES TIRE MOVEMENTS AND GREEN LINES TO REPRESENT THE VEHICLE FRONT AND REAR OVERHANG.



Fire-Walpole

	feet
Width	: 8.33
Track	: 7.03
Lock to Lock Time	: 6.0
Steering Angle	: 39.2



6/20/2023 L:\19097\19097_04 - Lot 2\CURRENT\19097 - Vehicle Turning Plan.dwg
 Nathan Cheng



HOWARD STEIN HUDSON
 114 Turnpike Road, Suite 2C
 Chelmsford, MA 01824
 www.hshassoc.com

PREPARED FOR:
 FRH REALTY LLC
 c/o FAIRFIELD RESIDENTIAL
 5 BURLINGTON WOODS, SUITE 203
 BURLINGTON, MA 01803

**PROPOSED MULTIFAMILY
 DEVELOPMENT
 SUMMER STREET
 WALPOLE, MA**

REVISIONS:

NO	BY	DATE	DESCRIPTION



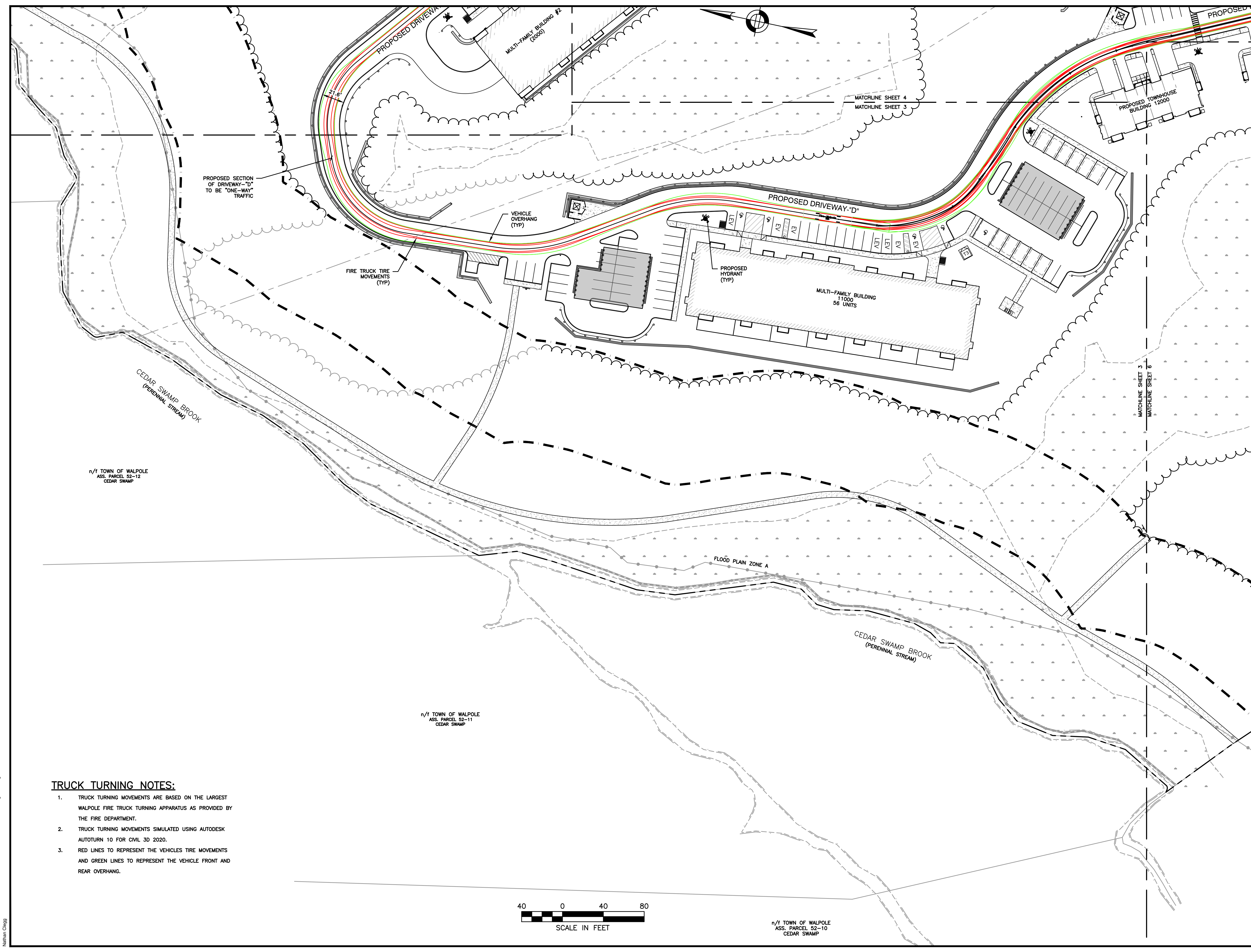
SITE
 PLAN

TRUCK TURNING
 PLAN 3 OF 9

DATE: JUNE 20, 2023
 PROJECT NUMBER: 19097
 DESIGNED BY: PB/KE/KF
 DRAWN BY: PB/MB/KF/KL
 CHECKED BY: KE

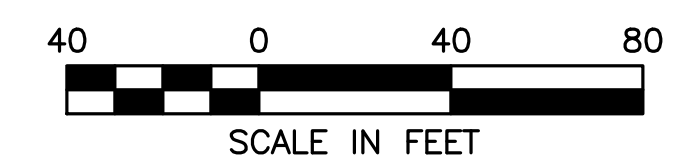
C.3

SHEET 3 OF 9



TRUCK TURNING NOTES:

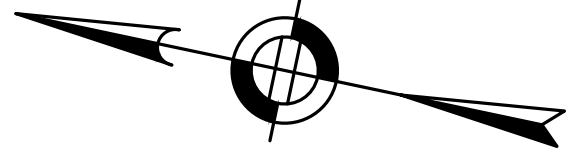
1. TRUCK TURNING MOVEMENTS ARE BASED ON THE LARGEST WALPOLE FIRE TRUCK TURNING APPARATUS AS PROVIDED BY THE FIRE DEPARTMENT.
2. TRUCK TURNING MOVEMENTS SIMULATED USING AUTODESK AUTOTURN 10 FOR CIVIL 3D 2020.
3. RED LINES TO REPRESENT THE VEHICLES TIRE MOVEMENTS AND GREEN LINES TO REPRESENT THE VEHICLE FRONT AND REAR OVERHANG.



n/t TOWN OF WALPOLE
 ASS. PARCEL 52-10
 CEDAR SWAMP

n/t TOWN OF WALPOLE
 ASS. PARCEL 52-11
 CEDAR SWAMP

n/t TOWN OF WALPOLE
 ASS. PARCEL 52-12
 CEDAR SWAMP



RUCADUC POND

TRUCK TURNING NOTES:

1. TRUCK TURNING MOVEMENTS ARE BASED ON THE LARGEST WALPOLE FIRE TRUCK TURNING APPARATUS AS PROVIDED BY THE FIRE DEPARTMENT.
2. TRUCK TURNING MOVEMENTS SIMULATED USING AUTODESK AUTOTURN 10 FOR CIVIL 3D 2020.
3. RED LINES TO REPRESENT THE VEHICLES TIRE MOVEMENTS AND GREEN LINES TO REPRESENT THE VEHICLE FRONT AND REAR OVERHANG.

HOWARD STEIN HUDSON
 114 Turnpike Road, Suite 2C
 Chelmsford, MA 01824
 www.hshassoc.com

PREPARED FOR:
 FRH REALTY LLC
 c/o FAIRFIELD RESIDENTIAL
 5 BURLINGTON WOODS, SUITE 203
 BURLINGTON, MA 01803

PROPOSED MULTIFAMILY DEVELOPMENT
 SUMMER STREET
 WALPOLE, MA

REVISIONS:

NO	BY	DATE	DESCRIPTION



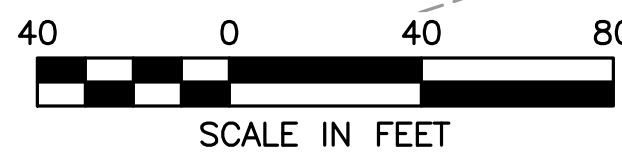
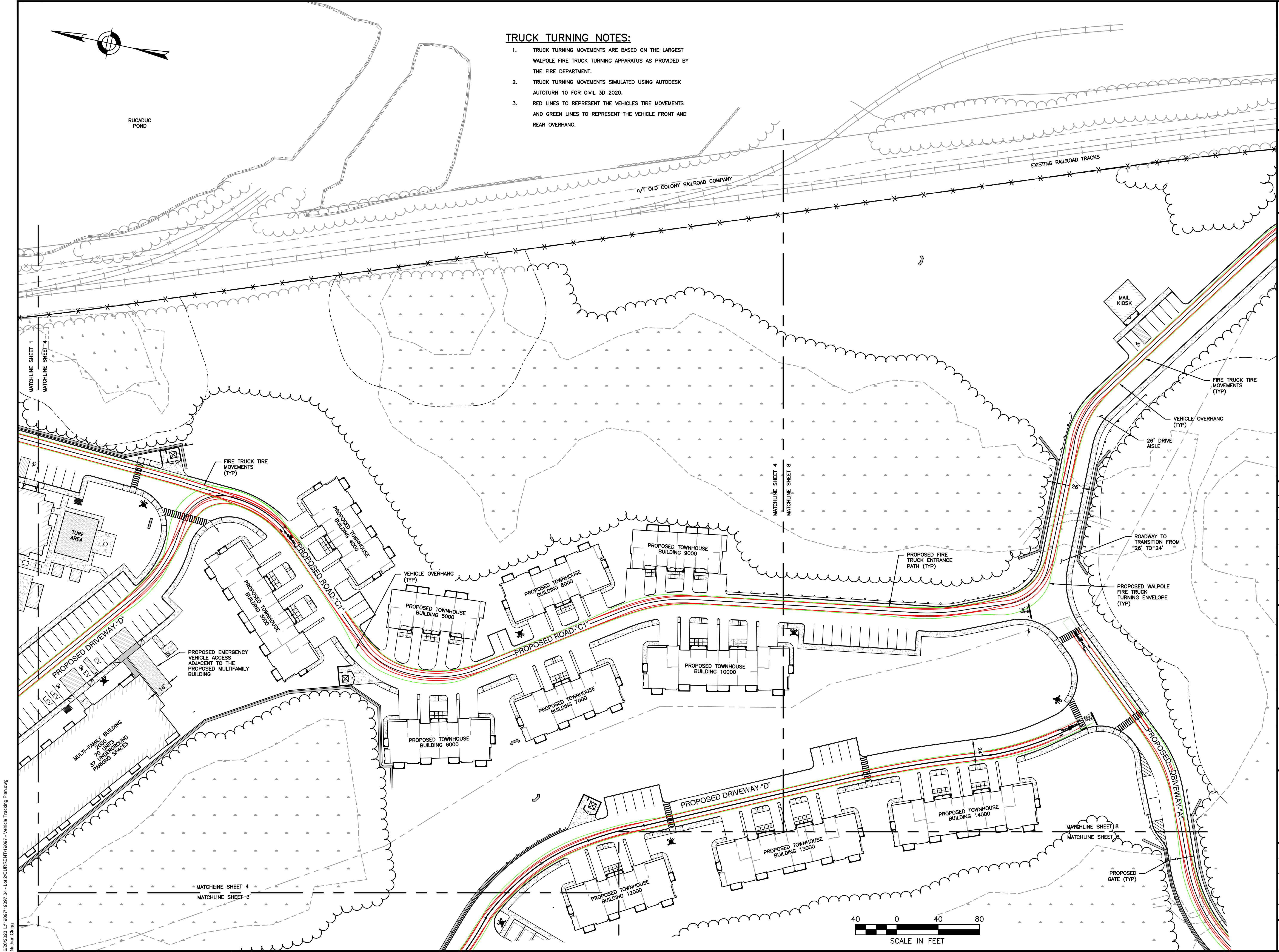
SITE PLAN

TRUCK TURNING PLAN 4 OF 9

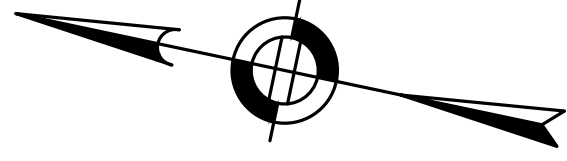
DATE: JUNE 20, 2023
 PROJECT NUMBER: 19097
 DESIGNED BY: PB/KE/KF
 DRAWN BY: PB/MB/KF/KL
 CHECKED BY: KE

C.4

SHEET 4 OF 9



6/20/2023, L:\19097\19097_04 - Lot 2\CURRENT\19097 - Vehicle Tracking Plan.dwg
 Nathan Cheng



RUCADUC POND

TRUCK TURNING NOTES:

1. TRUCK TURNING MOVEMENTS ARE BASED ON THE LARGEST WALPOLE FIRE TRUCK TURNING APPARATUS AS PROVIDED BY THE FIRE DEPARTMENT.
2. TRUCK TURNING MOVEMENTS SIMULATED USING AUTODESK AUTOTURN 10 FOR CIVIL 3D 2020.
3. RED LINES TO REPRESENT THE VEHICLES TIRE MOVEMENTS AND GREEN LINES TO REPRESENT THE VEHICLE FRONT AND REAR OVERHANG.

HOWARD STEIN HUDSON
 114 Turnpike Road, Suite 2C
 Chelmsford, MA 01824
 www.hshassoc.com

PREPARED FOR:
 FRH REALTY LLC
 c/o FAIRFIELD RESIDENTIAL
 5 BURLINGTON WOODS, SUITE 203
 BURLINGTON, MA 01803

PROPOSED MULTIFAMILY DEVELOPMENT
 SUMMER STREET
 WALPOLE, MA

REVISIONS:

NO	BY	DATE	DESCRIPTION



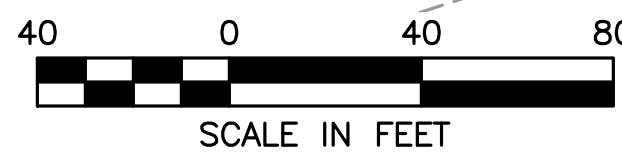
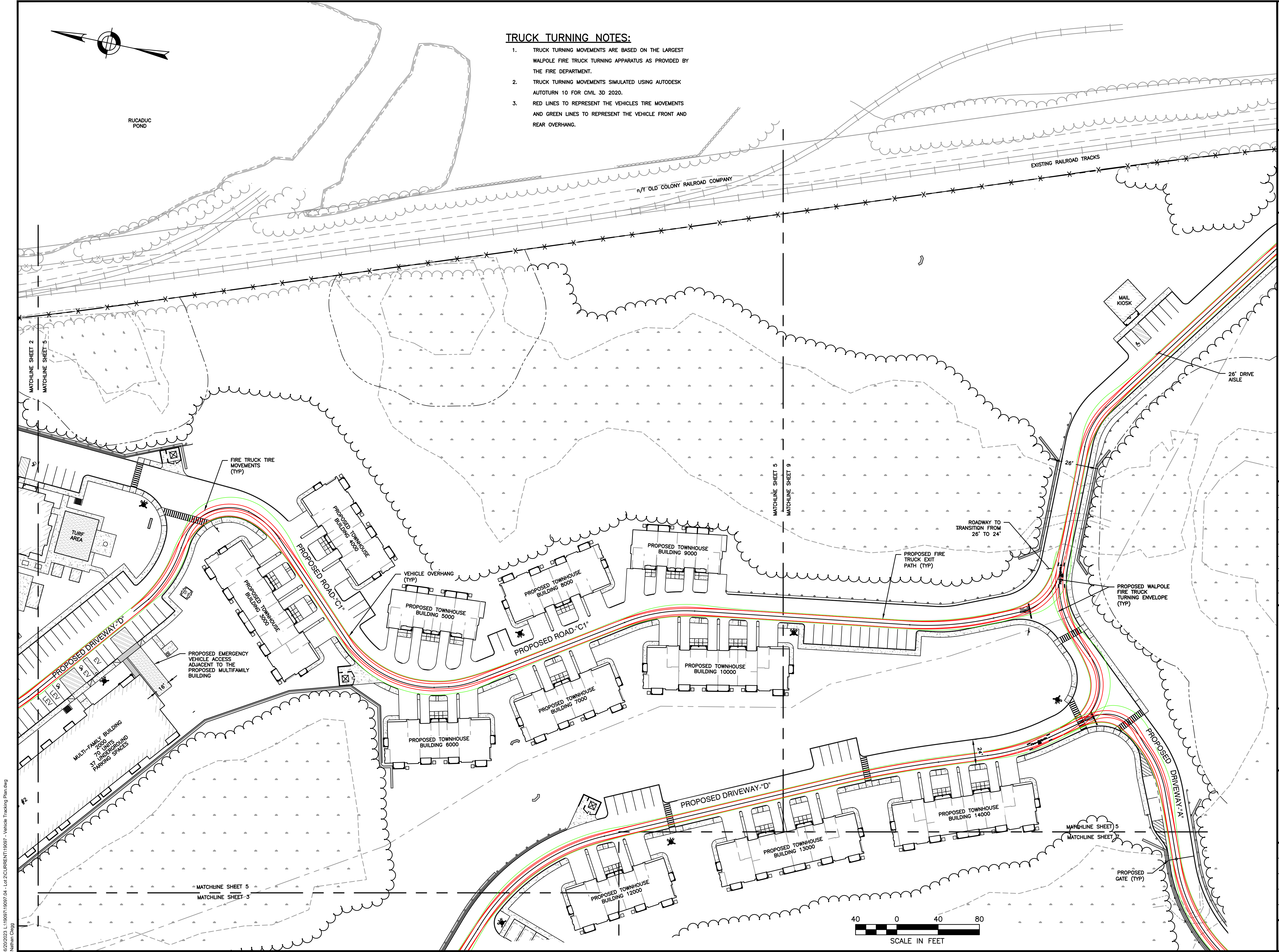
SITE PLAN

TRUCK TURNING PLAN 5 OF 9

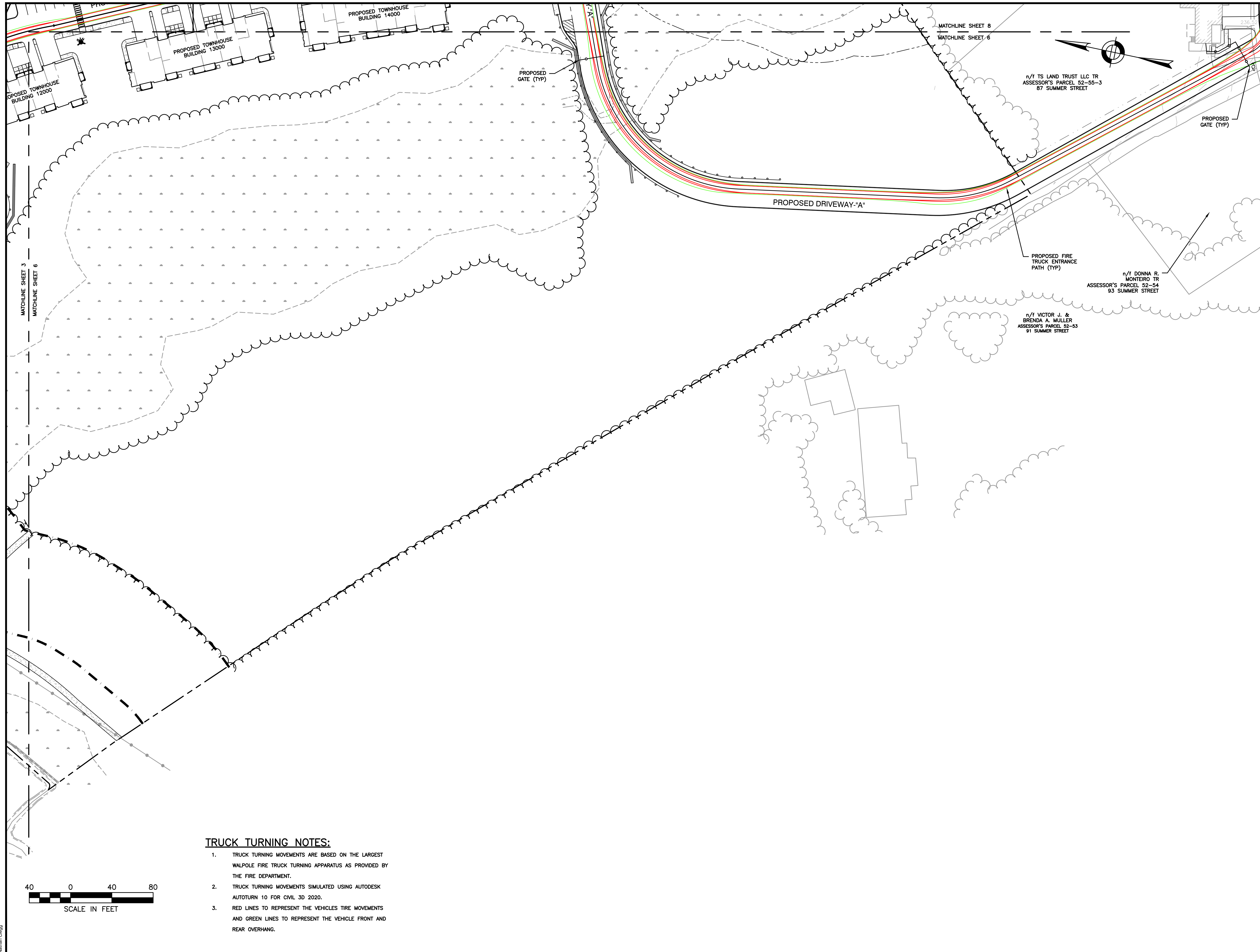
DATE: JUNE 20, 2023
 PROJECT NUMBER: 19097
 DESIGNED BY: PB/KE/KF
 DRAWN BY: PB/MB/KF/KL
 CHECKED BY: KE

C.5

SHEET 5 OF 9



6/20/2023, L:\19097\19097_04 - Lot 2\CURRENT\19097 - Vehicle Tracking Plan.dwg
 Nathan Cheng



PREPARED FOR:
 FRH REALTY LLC
 c/o FAIRFIELD RESIDENTIAL
 5 BURLINGTON WOODS, SUITE 203
 BURLINGTON, MA 01803

**PROPOSED MULTIFAMILY
 DEVELOPMENT
 SUMMER STREET
 WALPOLE, MA**

REVISIONS:

NO	BY	DATE	DESCRIPTION

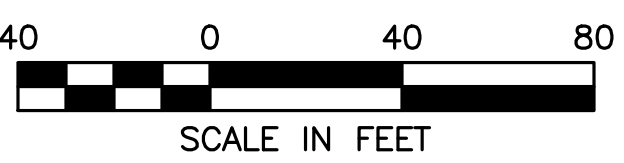


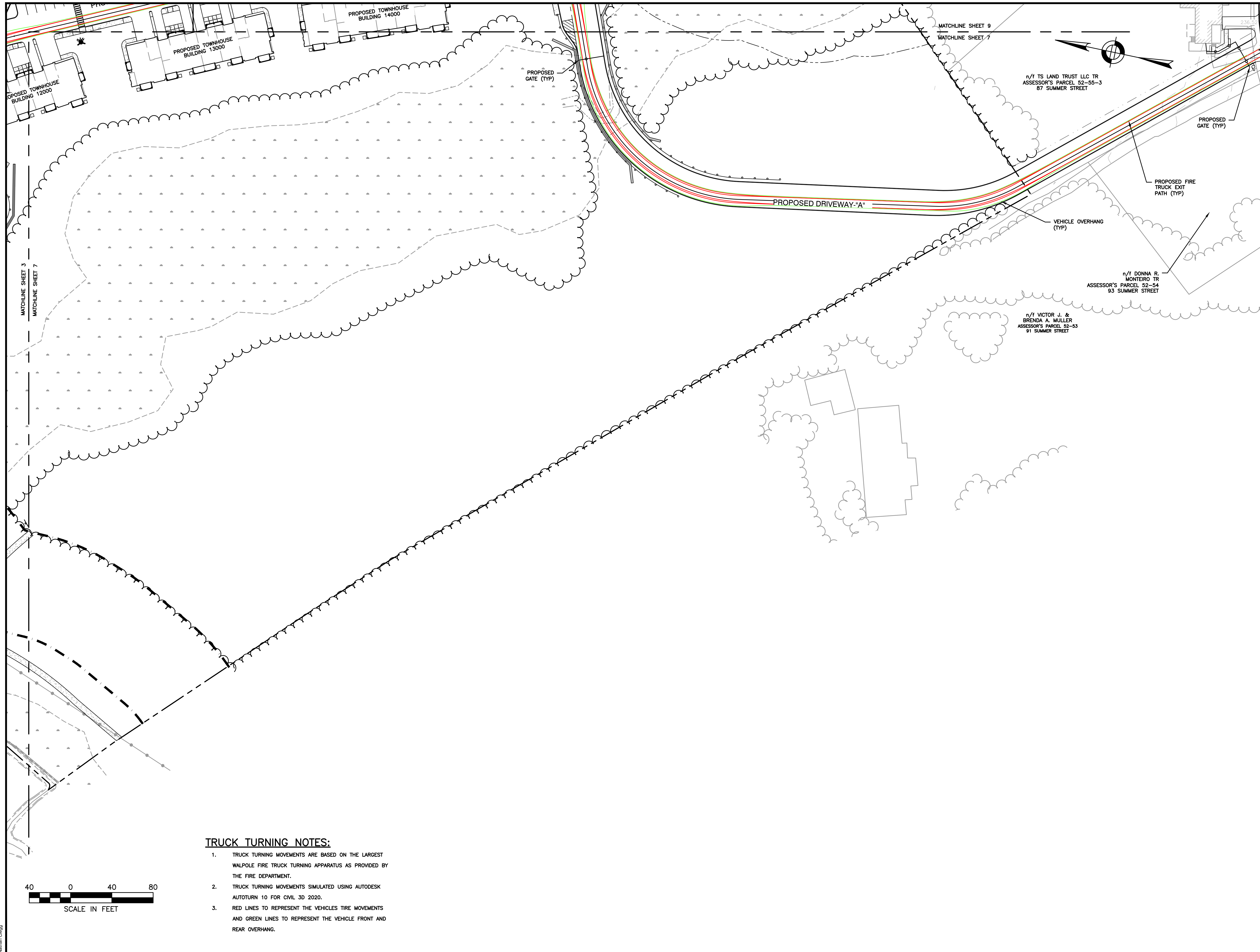
SITE PLAN

TRUCK TURNING PLAN 6 OF 9

DATE:	JUNE 20, 2023
PROJECT NUMBER:	19097
DESIGNED BY:	PB/KE/KF
DRAWN BY:	PB/MB/KF/KL
CHECKED BY:	KE
	C.6

- TRUCK TURNING NOTES:**
- TRUCK TURNING MOVEMENTS ARE BASED ON THE LARGEST WALPOLE FIRE TRUCK TURNING APPARATUS AS PROVIDED BY THE FIRE DEPARTMENT.
 - TRUCK TURNING MOVEMENTS SIMULATED USING AUTODESK AUTOTURN 10 FOR CIVIL 3D 2020.
 - RED LINES TO REPRESENT THE VEHICLES TIRE MOVEMENTS AND GREEN LINES TO REPRESENT THE VEHICLE FRONT AND REAR OVERHANG.





PREPARED FOR:
 FRH REALTY LLC
 c/o FAIRFIELD RESIDENTIAL
 5 BURLINGTON WOODS, SUITE 203
 BURLINGTON, MA 01803

**PROPOSED MULTIFAMILY
 DEVELOPMENT
 SUMMER STREET
 WALPOLE, MA**

REVISIONS:

NO	BY	DATE	DESCRIPTION

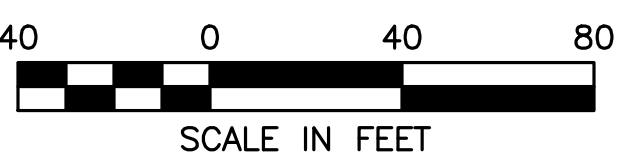


SITE PLAN

TRUCK TURNING PLAN 7 OF 9

DATE:	JUNE 20, 2023
PROJECT NUMBER:	19097
DESIGNED BY:	PB/KE/KF
DRAWN BY:	PB/MB/KF/KL
CHECKED BY:	KE
	C.7

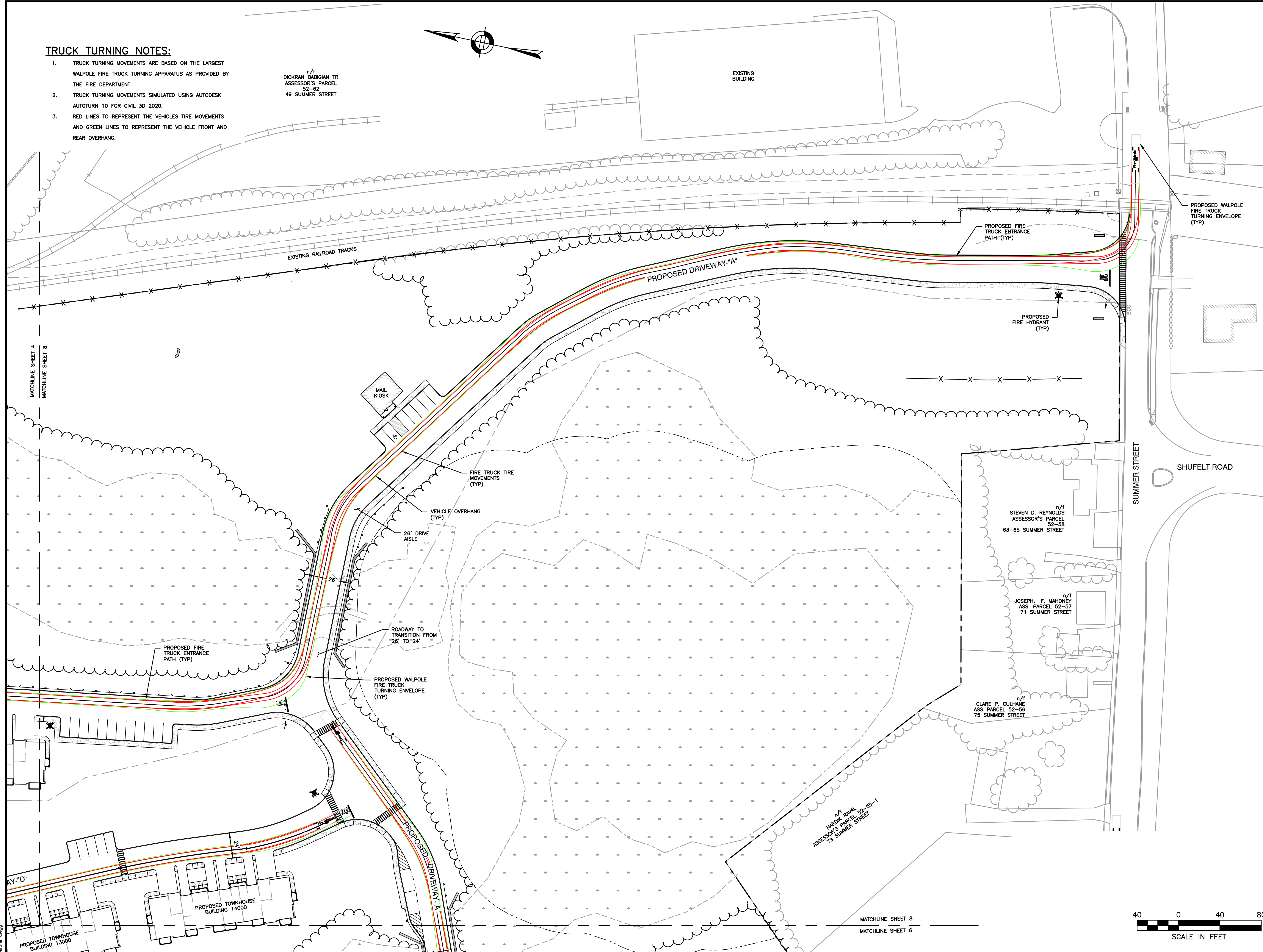
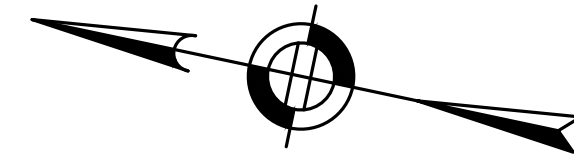
- TRUCK TURNING NOTES:**
- TRUCK TURNING MOVEMENTS ARE BASED ON THE LARGEST WALPOLE FIRE TRUCK TURNING APPARATUS AS PROVIDED BY THE FIRE DEPARTMENT.
 - TRUCK TURNING MOVEMENTS SIMULATED USING AUTODESK AUTOTURN 10 FOR CIVIL 3D 2020.
 - RED LINES TO REPRESENT THE VEHICLES TIRE MOVEMENTS AND GREEN LINES TO REPRESENT THE VEHICLE FRONT AND REAR OVERHANG.



TRUCK TURNING NOTES:

1. TRUCK TURNING MOVEMENTS ARE BASED ON THE LARGEST WALPOLE FIRE TRUCK TURNING APPARATUS AS PROVIDED BY THE FIRE DEPARTMENT.
2. TRUCK TURNING MOVEMENTS SIMULATED USING AUTODESK AUTOTURN 10 FOR CIVIL 3D 2020.
3. RED LINES TO REPRESENT THE VEHICLES TIRE MOVEMENTS AND GREEN LINES TO REPRESENT THE VEHICLE FRONT AND REAR OVERHANG.

n/i
DICKRAN BABIGIAN TR
ASSESSOR'S PARCEL
52-62
49 SUMMER STREET



HOWARD STEIN HUDSON
114 Turnpike Road, Suite 2C
Chelmsford, MA 01824
www.hshassoc.com

PREPARED FOR:
FRH REALTY LLC
c/o FAIRFIELD RESIDENTIAL
5 BURLINGTON WOODS, SUITE 203
BURLINGTON, MA 01803

**PROPOSED MULTIFAMILY
DEVELOPMENT
SUMMER STREET
WALPOLE, MA**

REVISIONS:

NO	BY	DATE	DESCRIPTION



SITE
PLAN

TRUCK TURNING
PLAN 8 OF 9

DATE: JUNE 20, 2023
PROJECT NUMBER: 19097
DESIGNED BY: PB/KE/KF
DRAWN BY: PB/MB/KF/KL
CHECKED BY: KE



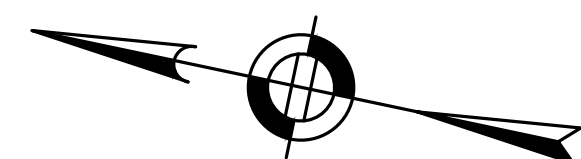
C.8

6/20/2023 1:16:07 PM - Lot 2 CURRENT 19097 - Vehicle Tracking Plan.dwg
Nathan Cheng

TRUCK TURNING NOTES:

1. TRUCK TURNING MOVEMENTS ARE BASED ON THE LARGEST WALPOLE FIRE TRUCK TURNING APPARATUS AS PROVIDED BY THE FIRE DEPARTMENT.
2. TRUCK TURNING MOVEMENTS SIMULATED USING AUTODESK AUTOTURN 10 FOR CIVIL 3D 2020.
3. RED LINES TO REPRESENT THE VEHICLES TIRE MOVEMENTS AND GREEN LINES TO REPRESENT THE VEHICLE FRONT AND REAR OVERHANG.

n/i
DICKRAN BABIGIAN TR
ASSESSOR'S PARCEL
52-62
49 SUMMER STREET



EXISTING BUILDING

HOWARD STEIN HUDSON
114 Turnpike Road, Suite 2C
Chelmsford, MA 01824
www.hshassoc.com

PREPARED FOR:
FRH REALTY LLC
c/o FAIRFIELD RESIDENTIAL
5 BURLINGTON WOODS, SUITE 203
BURLINGTON, MA 01803

**PROPOSED MULTIFAMILY
DEVELOPMENT
SUMMER STREET
WALPOLE, MA**

REVISIONS:

NO	BY	DATE	DESCRIPTION



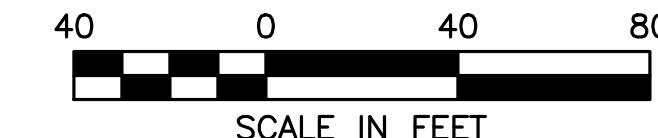
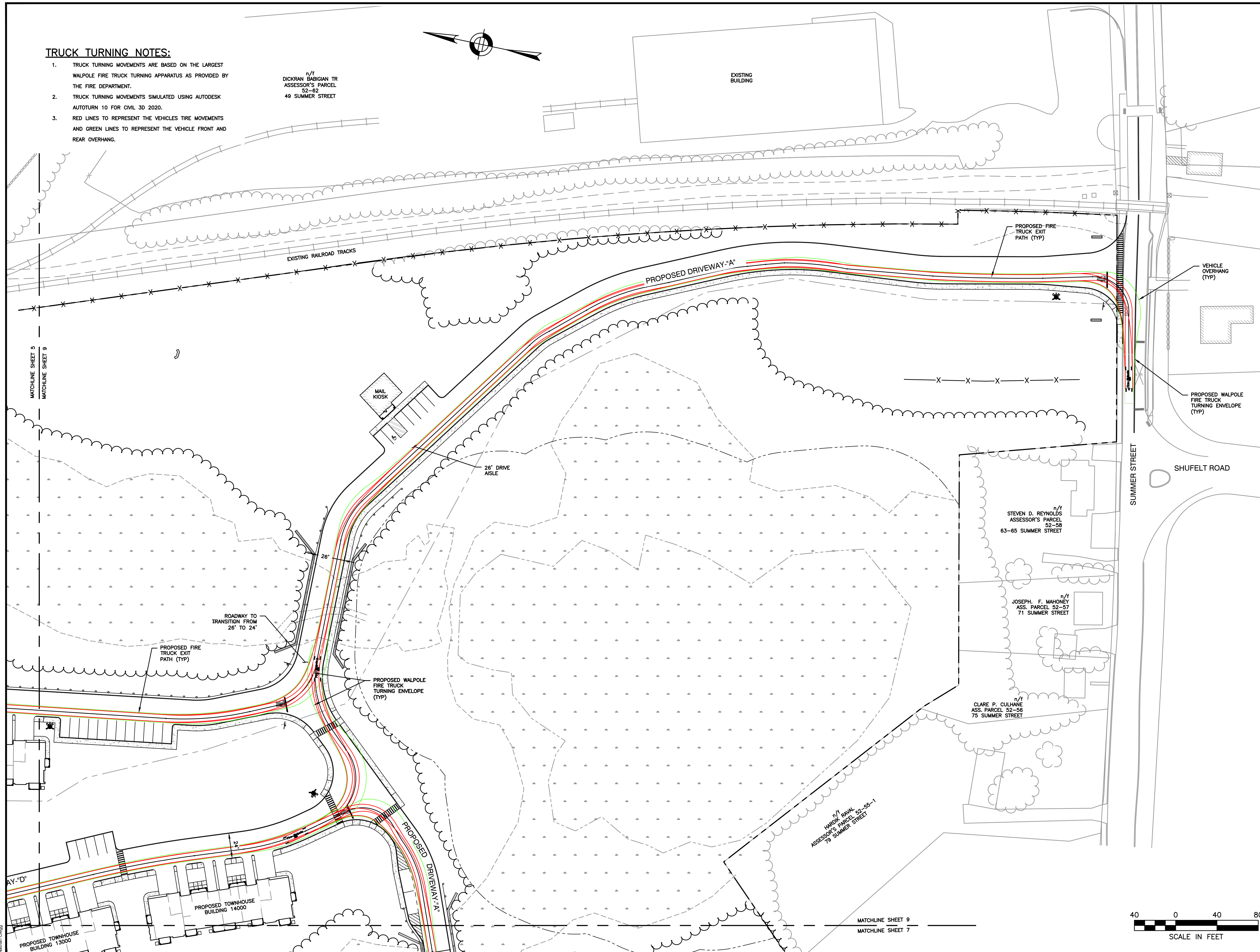
SITE PLAN

TRUCK TURNING
PLAN 9 OF 9

DATE: JUNE 20, 2023
PROJECT NUMBER: 19097
DESIGNED BY: PB/KE/KF
DRAWN BY: PB/MB/KF/KL
CHECKED BY: KE

C.9

SHEET 9 OF 9



MATCHLINE SHEET 9
MATCHLINE SHEET 7

6/20/2023 11:16:07 AM - Lot 2 CURRENT 19097 - Vehicle Tracking Plan.dwg
Nathan Cheng