



HOWARD STEIN HUDSON
 114 Turnpike Road, Suite 2C
 Chelmsford, MA 01824
 www.hshassoc.com

PREPARED FOR:
FAIRFIELD SUMMER STREET LLC.
 c/o FAIRFIELD RESIDENTIAL
 30 BRAINTREE HILL PARK SUITE 105
 BRAINTREE, MA 02184

**PROPOSED MULTIFAMILY
 DEVELOPMENT
 SUMMER STREET
 WALPOLE, MA**

REVISIONS:

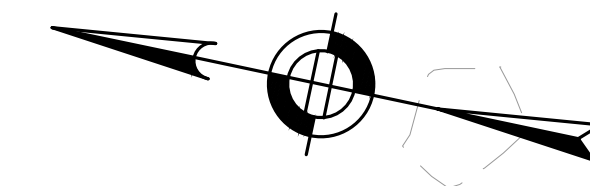
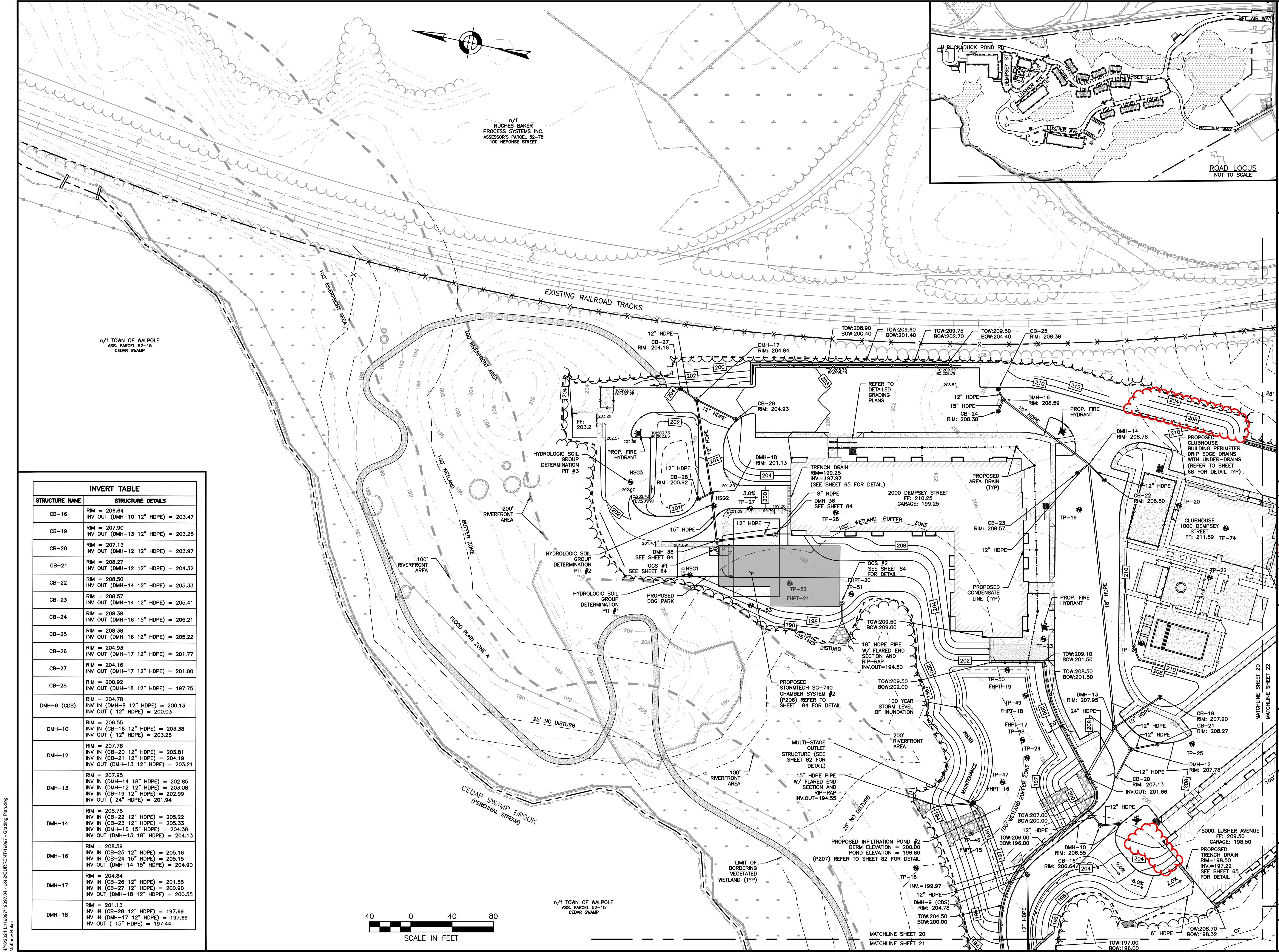
NO	BY	DATE	DESCRIPTION
1	PB	04/26/23	PERMIT SET
2	AI	11/21/23	REV. ADDRESSING
3	MB	03/12/24	REV. PERMIT SET
4	MB	04/10/24	IFC SET

SITE PLAN

GRADING AND
 DRAINAGE PLAN
 1 OF 5

DATE: APRIL 26, 2023
 PROJECT NUMBER: 19097
 DESIGNED BY: PB/KE/KF
 DRAWN BY: PB/MB/KF/KL
 CHECKED BY: KE
 C.20

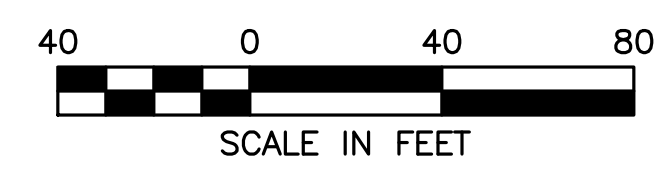
SHEET 20 OF 91



n/1 HUGHES BAKER
 PROCESS SYSTEMS INC.
 ASSESSOR'S PARCEL 52-78
 100 NEPOSE STREET

n/1 TOWN OF WALPOLE
 ASS. PARCEL 52-15
 CEDAR SWAMP

n/1 TOWN OF WALPOLE
 ASS. PARCEL 52-15
 CEDAR SWAMP



STRUCTURE NAME	STRUCTURE DETAILS
CB-16	RIM = 206.64 INV OUT (DMH-10 12" HDPE) = 203.47
CB-19	RIM = 207.90 INV OUT (DMH-13 12" HDPE) = 203.25
CB-20	RIM = 207.13 INV OUT (DMH-12 12" HDPE) = 203.97
CB-21	RIM = 208.27 INV OUT (DMH-12 12" HDPE) = 204.32
CB-22	RIM = 208.50 INV OUT (DMH-14 12" HDPE) = 205.33
CB-23	RIM = 208.57 INV OUT (DMH-14 12" HDPE) = 205.41
CB-24	RIM = 208.38 INV OUT (DMH-16 15" HDPE) = 205.21
CB-25	RIM = 208.38 INV OUT (DMH-16 12" HDPE) = 205.22
CB-26	RIM = 204.93 INV OUT (DMH-17 12" HDPE) = 201.77
CB-27	RIM = 204.16 INV OUT (DMH-17 12" HDPE) = 201.00
CB-28	RIM = 200.92 INV OUT (DMH-18 12" HDPE) = 197.75
DMH-9 (CDS)	RIM = 204.78 INV IN (DMH-8 12" HDPE) = 200.13 INV OUT (12" HDPE) = 200.03
DMH-10	RIM = 206.55 INV IN (CB-16 12" HDPE) = 203.38 INV OUT (12" HDPE) = 203.28
DMH-12	RIM = 207.78 INV IN (CB-20 12" HDPE) = 203.81 INV IN (CB-21 12" HDPE) = 204.19 INV OUT (DMH-13 12" HDPE) = 203.21
DMH-13	RIM = 207.95 INV IN (DMH-14 18" HDPE) = 202.85 INV IN (DMH-12 12" HDPE) = 203.08 INV IN (CB-19 12" HDPE) = 202.99 INV OUT (24" HDPE) = 201.94
DMH-14	RIM = 208.78 INV IN (CB-22 12" HDPE) = 205.22 INV IN (CB-23 12" HDPE) = 205.33 INV IN (DMH-16 15" HDPE) = 204.38 INV OUT (DMH-13 18" HDPE) = 204.13
DMH-16	RIM = 208.59 INV IN (CB-25 12" HDPE) = 205.16 INV IN (CB-24 15" HDPE) = 205.15 INV OUT (DMH-14 15" HDPE) = 204.90
DMH-17	RIM = 204.84 INV IN (CB-26 12" HDPE) = 201.55 INV IN (CB-27 12" HDPE) = 200.90 INV OUT (DMH-18 12" HDPE) = 200.55
DMH-18	RIM = 201.13 INV IN (CB-28 12" HDPE) = 197.69 INV IN (DMH-17 12" HDPE) = 197.69 INV OUT (15" HDPE) = 197.44

4/16/2024, L:\19097\19097_04 - Lot 2\CURRENT\19097 - Grading Plan.dwg
 Matthew Baker



HOWARD STEIN HUDSON
 114 Turnpike Road, Suite 2C
 Chelmsford, MA 01824
 www.hshassoc.com

PREPARED FOR:
 FAIRFIELD SUMMER STREET LLC.
 c/o FAIRFIELD RESIDENTIAL
 30 BRAINTREE HILL PARK SUITE 105
 BRAINTREE, MA 02184

**PROPOSED MULTIFAMILY
 DEVELOPMENT
 SUMMER STREET
 WALPOLE, MA**

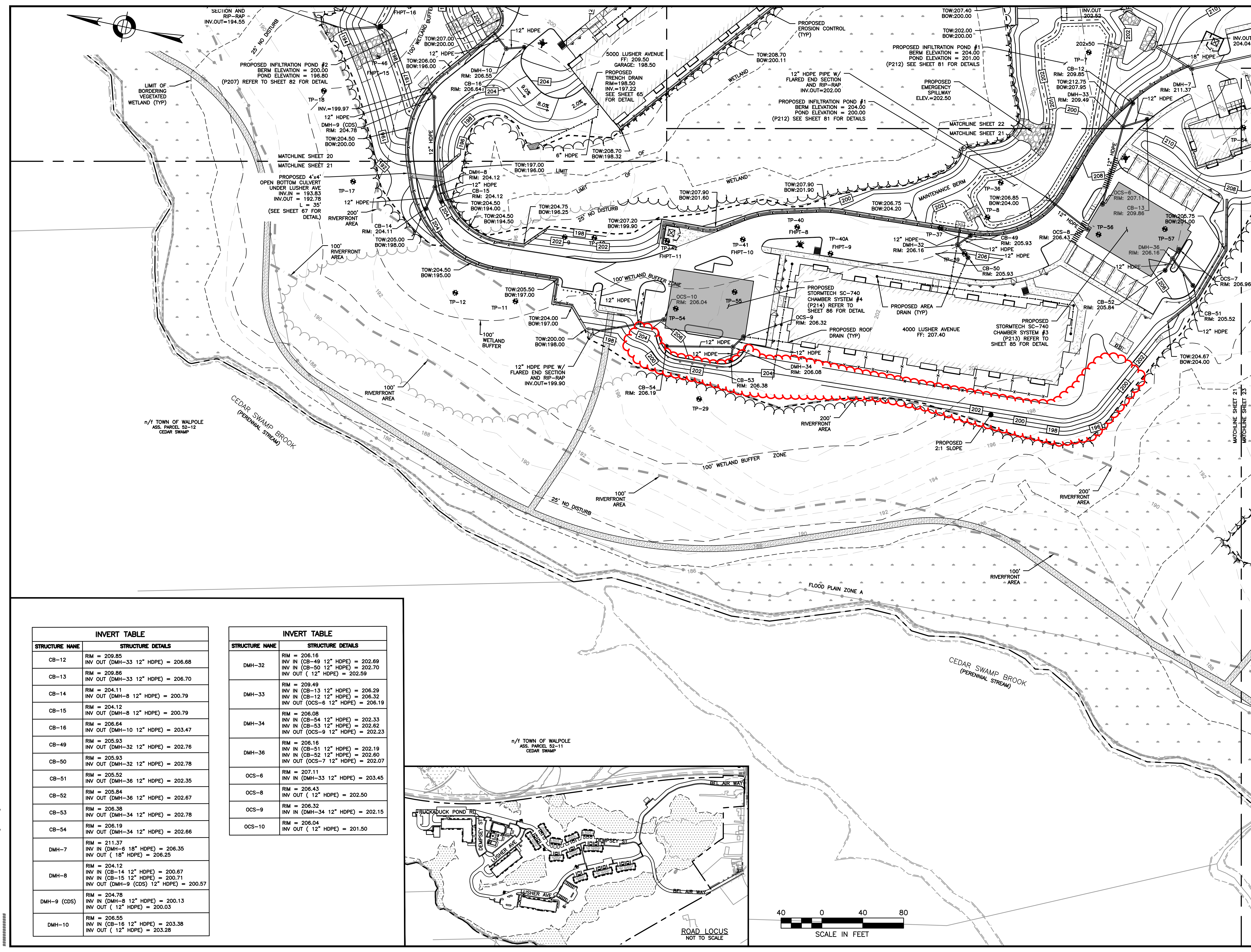
REVISIONS:

NO	BY	DATE	DESCRIPTION
1	PB	04/26/23	PERMIT SET
2	AI	11/21/23	REV. ADDRESSING
3	MB	03/12/24	REV. PERMIT SET
4	MB	04/10/24	IFC SET

SITE PLAN

GRADING AND DRAINAGE PLAN
 2 OF 5

DATE:	APRIL 26, 2023
PROJECT NUMBER:	19097
DESIGNED BY:	PB/KE/KF
DRAWN BY:	PB/MB/KF/KL
CHECKED BY:	KE
	C.21

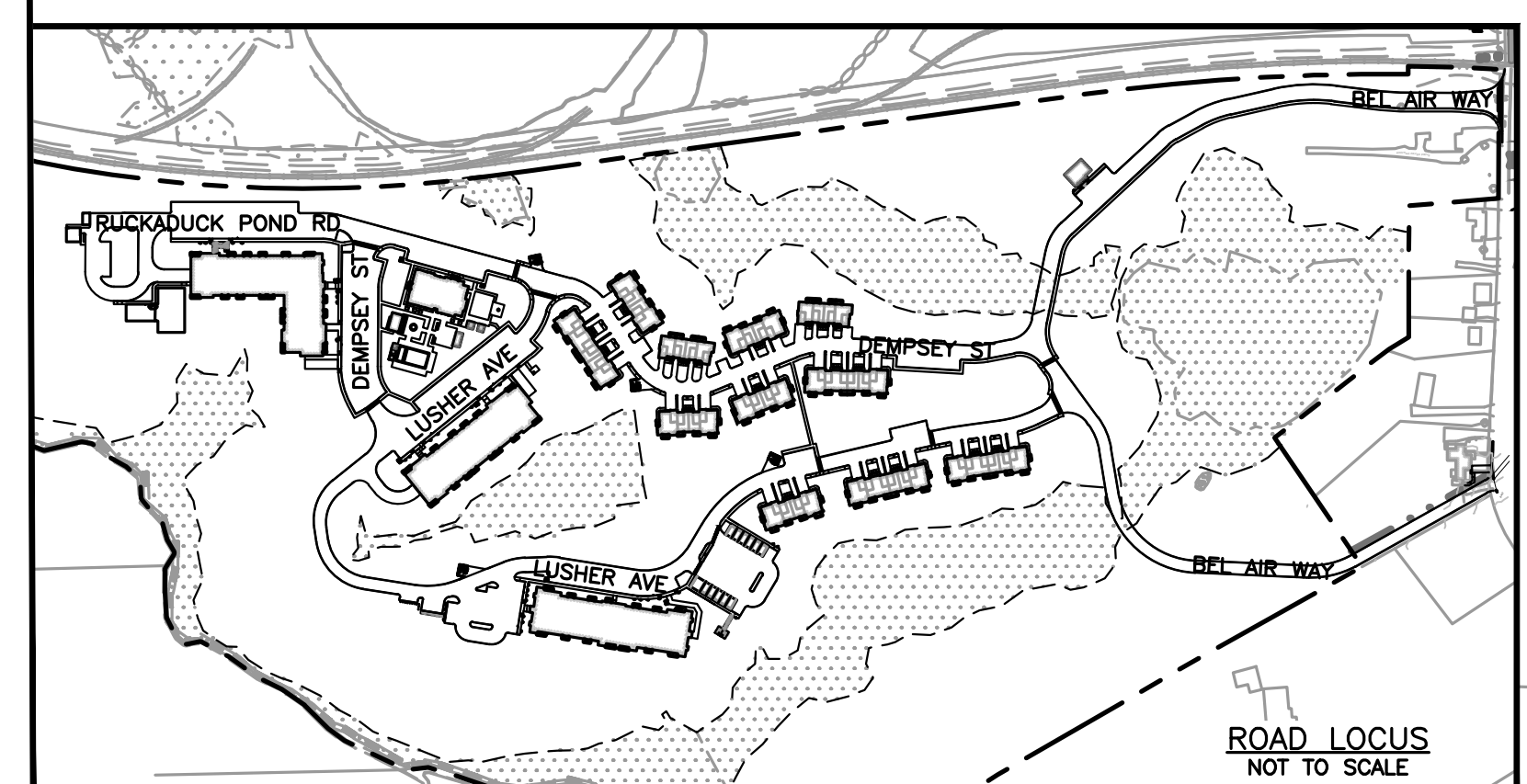


INVERT TABLE

STRUCTURE NAME	STRUCTURE DETAILS
CB-12	RIM = 209.85 INV OUT (DMH-33 12" HDPE) = 206.68
CB-13	RIM = 209.86 INV OUT (DMH-33 12" HDPE) = 206.70
CB-14	RIM = 204.11 INV OUT (DMH-8 12" HDPE) = 200.79
CB-15	RIM = 204.12 INV OUT (DMH-8 12" HDPE) = 200.79
CB-16	RIM = 206.64 INV OUT (DMH-10 12" HDPE) = 203.47
CB-49	RIM = 205.93 INV OUT (DMH-32 12" HDPE) = 202.76
CB-50	RIM = 205.93 INV OUT (DMH-32 12" HDPE) = 202.78
CB-51	RIM = 205.52 INV OUT (DMH-36 12" HDPE) = 202.35
CB-52	RIM = 205.84 INV OUT (DMH-36 12" HDPE) = 202.67
CB-53	RIM = 206.38 INV OUT (DMH-34 12" HDPE) = 202.78
CB-54	RIM = 206.19 INV OUT (DMH-34 12" HDPE) = 202.66
DMH-7	RIM = 211.37 INV IN (DMH-6 18" HDPE) = 206.35 INV OUT (18" HDPE) = 206.25
DMH-8	RIM = 204.12 INV IN (CB-14 12" HDPE) = 200.67 INV IN (CB-15 12" HDPE) = 200.71 INV OUT (DMH-9 (CDS) 12" HDPE) = 200.57
DMH-9 (CDS)	RIM = 204.78 INV IN (DMH-8 12" HDPE) = 200.13 INV OUT (12" HDPE) = 200.03
DMH-10	RIM = 206.55 INV IN (CB-16 12" HDPE) = 203.38 INV OUT (12" HDPE) = 203.28

INVERT TABLE

STRUCTURE NAME	STRUCTURE DETAILS
DMH-32	RIM = 206.16 INV IN (CB-49 12" HDPE) = 202.69 INV IN (CB-50 12" HDPE) = 202.70 INV OUT (12" HDPE) = 202.59
DMH-33	RIM = 209.49 INV IN (CB-13 12" HDPE) = 206.29 INV IN (CB-12 12" HDPE) = 206.32 INV OUT (OCS-6 12" HDPE) = 206.19
DMH-34	RIM = 206.08 INV IN (CB-54 12" HDPE) = 202.33 INV IN (CB-53 12" HDPE) = 202.62 INV OUT (OCS-9 12" HDPE) = 202.23
DMH-36	RIM = 206.16 INV IN (CB-51 12" HDPE) = 202.19 INV IN (CB-52 12" HDPE) = 202.60 INV OUT (OCS-7 12" HDPE) = 202.07
OCS-6	RIM = 207.11 INV IN (DMH-33 12" HDPE) = 203.45
OCS-8	RIM = 206.43 INV OUT (12" HDPE) = 202.50
OCS-9	RIM = 206.32 INV IN (DMH-34 12" HDPE) = 202.15
OCS-10	RIM = 206.04 INV OUT (12" HDPE) = 201.50





HOWARD STEIN HUDSON
 114 Turnpike Road, Suite 2C
 Chelmsford, MA 01824
 www.hshassoc.com

PREPARED FOR:
FAIRFIELD SUMMER STREET LLC.
 c/o FAIRFIELD RESIDENTIAL
 30 BRAINTREE HILL PARK SUITE 105
 BRAINTREE, MA 02184

**PROPOSED MULTIFAMILY
 DEVELOPMENT
 SUMMER STREET
 WALPOLE, MA**

REVISIONS:

NO	BY	DATE	DESCRIPTION
1	PB	04/26/23	PERMIT SET
2	AI	11/21/23	REV. ADDRESSING
3	MB	03/12/24	REV. PERMIT SET
4	MB	04/10/24	IFC SET

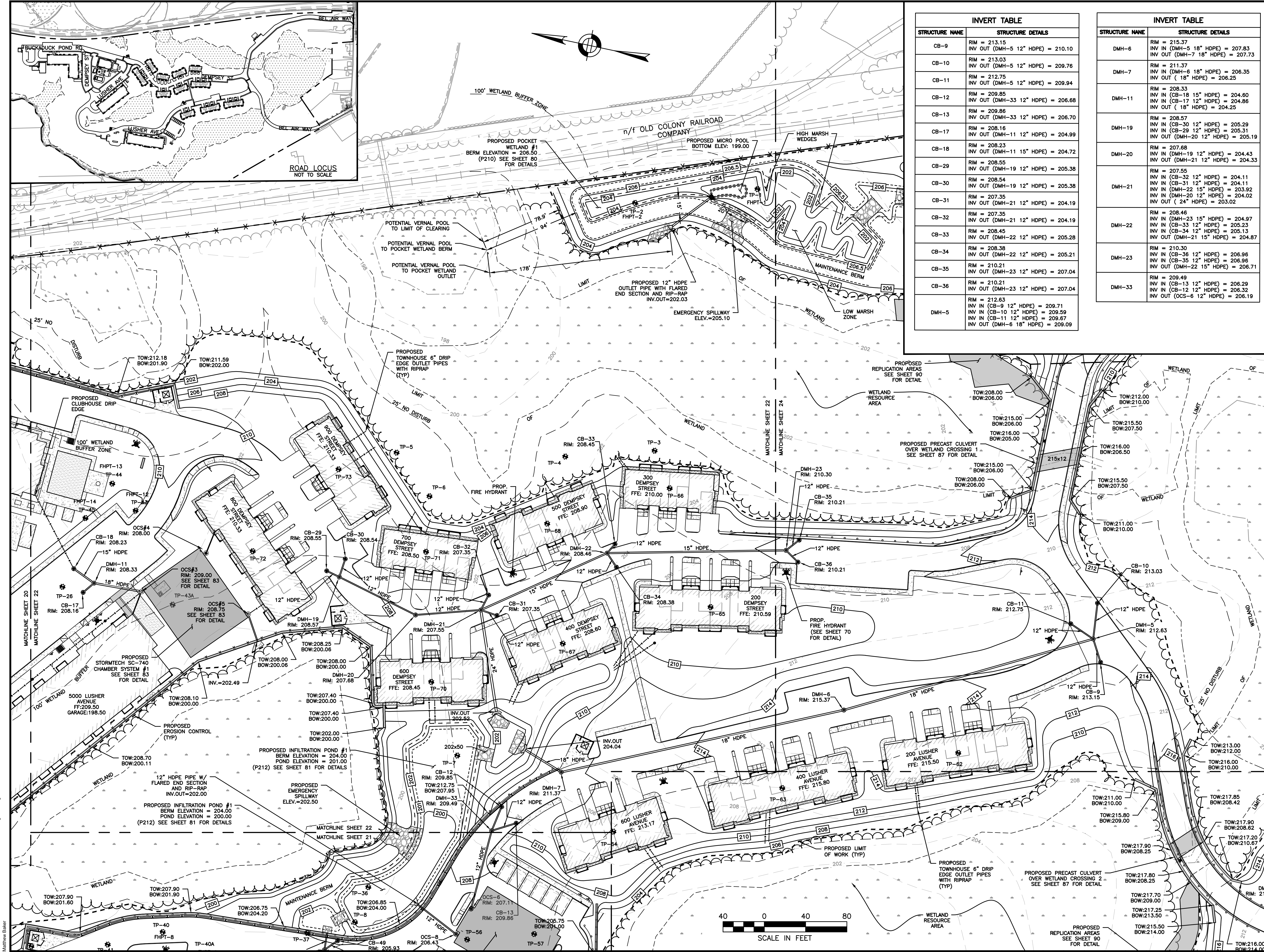
SITE PLAN

GRADING AND
 DRAINAGE PLAN
 3 OF 5

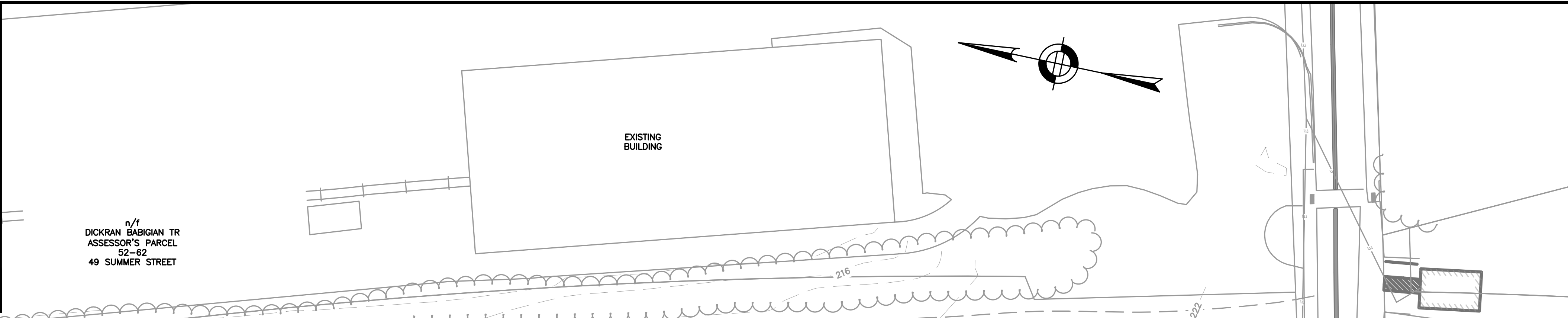
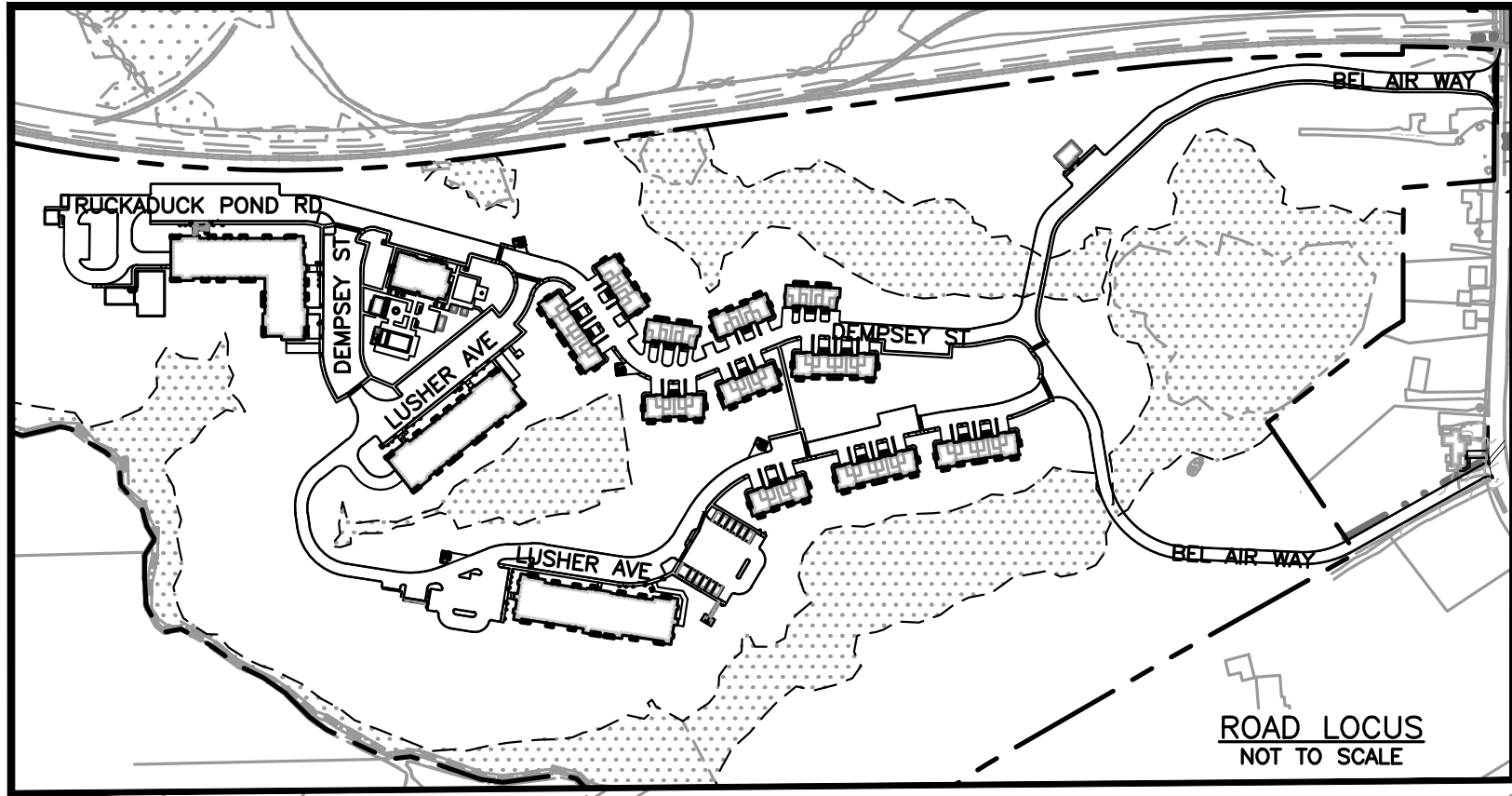
DATE: APRIL 26, 2023
 PROJECT NUMBER: 19097
 DESIGNED BY: PB/KE/KF
 DRAWN BY: PB/MB/KF/KL
 CHECKED BY: KE
 C.22
 SHEET 22 OF 91

INVERT TABLE	
STRUCTURE NAME	STRUCTURE DETAILS
CB-9	RIM = 213.15 INV OUT (DMH-5 12" HDPE) = 210.10
CB-10	RIM = 213.03 INV OUT (DMH-5 12" HDPE) = 209.76
CB-11	RIM = 212.75 INV OUT (DMH-5 12" HDPE) = 209.94
CB-12	RIM = 209.85 INV OUT (DMH-33 12" HDPE) = 206.68
CB-13	RIM = 209.86 INV OUT (DMH-33 12" HDPE) = 206.70
CB-17	RIM = 208.18 INV OUT (DMH-11 12" HDPE) = 204.99
CB-18	RIM = 208.23 INV OUT (DMH-11 15" HDPE) = 204.72
CB-29	RIM = 208.55 INV OUT (DMH-19 12" HDPE) = 205.38
CB-30	RIM = 208.54 INV OUT (DMH-19 12" HDPE) = 205.38
CB-31	RIM = 207.35 INV OUT (DMH-21 12" HDPE) = 204.19
CB-32	RIM = 207.35 INV OUT (DMH-21 12" HDPE) = 204.19
CB-33	RIM = 208.45 INV OUT (DMH-22 12" HDPE) = 205.28
CB-34	RIM = 208.38 INV OUT (DMH-22 12" HDPE) = 205.21
CB-35	RIM = 210.21 INV OUT (DMH-23 12" HDPE) = 207.04
CB-36	RIM = 210.21 INV OUT (DMH-23 12" HDPE) = 207.04
DMH-5	RIM = 212.63 INV IN (CB-9 12" HDPE) = 209.71 INV IN (CB-10 12" HDPE) = 209.59 INV IN (CB-11 12" HDPE) = 209.67 INV OUT (DMH-6 18" HDPE) = 209.09

INVERT TABLE	
STRUCTURE NAME	STRUCTURE DETAILS
DMH-6	RIM = 215.37 INV IN (DMH-5 18" HDPE) = 207.83 INV OUT (DMH-7 18" HDPE) = 207.73
DMH-7	RIM = 211.37 INV IN (DMH-6 18" HDPE) = 206.35 INV OUT (18" HDPE) = 206.25
DMH-11	RIM = 208.33 INV IN (CB-18 15" HDPE) = 204.60 INV IN (CB-17 12" HDPE) = 204.86 INV OUT (18" HDPE) = 204.25
DMH-19	RIM = 208.57 INV IN (CB-30 12" HDPE) = 205.29 INV IN (CB-29 12" HDPE) = 205.31 INV OUT (DMH-20 12" HDPE) = 205.19
DMH-20	RIM = 207.68 INV IN (DMH-19 12" HDPE) = 204.43 INV OUT (DMH-21 12" HDPE) = 204.33
DMH-21	RIM = 207.55 INV IN (CB-32 12" HDPE) = 204.11 INV IN (CB-31 12" HDPE) = 204.11 INV IN (DMH-22 15" HDPE) = 203.92 INV IN (DMH-20 12" HDPE) = 204.02 INV OUT (24" HDPE) = 203.02
DMH-22	RIM = 208.46 INV IN (DMH-23 15" HDPE) = 204.97 INV IN (CB-33 12" HDPE) = 205.23 INV IN (CB-34 12" HDPE) = 205.13 INV OUT (DMH-21 15" HDPE) = 204.87
DMH-23	RIM = 210.30 INV IN (CB-36 12" HDPE) = 206.96 INV IN (CB-35 12" HDPE) = 206.96 INV OUT (DMH-22 15" HDPE) = 206.71
DMH-33	RIM = 209.49 INV IN (CB-13 12" HDPE) = 206.29 INV IN (CB-12 12" HDPE) = 206.32 INV OUT (OCS-6 12" HDPE) = 206.19



4/16/2024, L:\19097\19097_04 - Lot 2\CURRENT\19097 - Grading Plan.dwg
 Matthew Baker



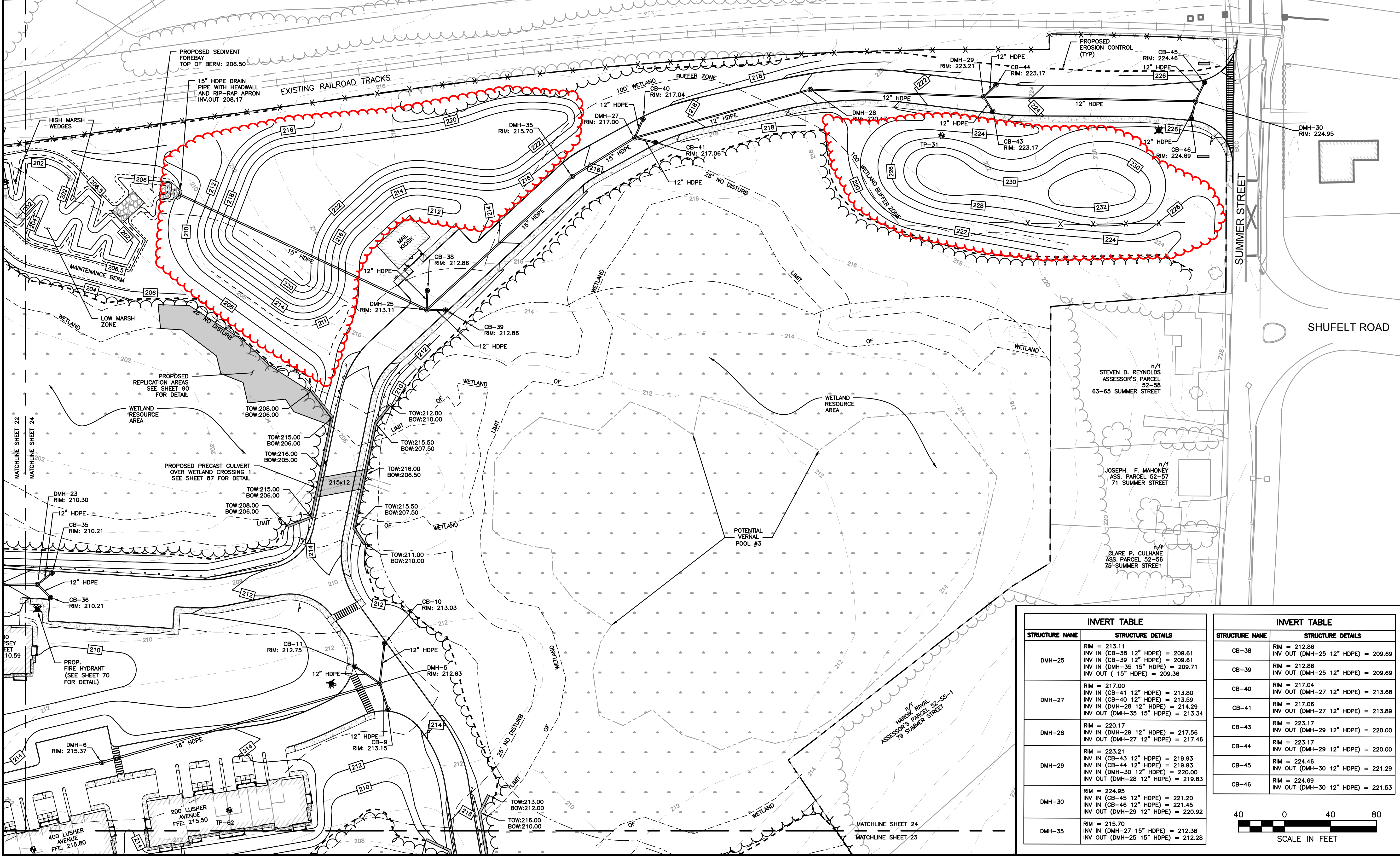
HOWARD STEIN HUDSON
 114 Turnpike Road, Suite 2C
 Chelmsford, MA 01824
 www.hshassoc.com

PREPARED FOR:
FAIRFIELD SUMMER STREET LLC.
 c/o FAIRFIELD RESIDENTIAL
 30 BRAINTREE HILL PARK SUITE 105
 BRAINTREE, MA 02184

**PROPOSED MULTIFAMILY
 DEVELOPMENT
 SUMMER STREET
 WALPOLE, MA**

REVISIONS:

NO	BY	DATE	DESCRIPTION
1	PB	04/26/23	PERMIT SET
2	AI	11/21/23	REV. ADDRESSING
3	MB	03/12/24	REV. PERMIT SET
4	MB	04/10/24	IFC SET



INVERT TABLE

STRUCTURE NAME	STRUCTURE DETAILS
DMH-25	RIM = 213.11 INV IN (CB-38 12" HDPE) = 209.61 INV IN (CB-39 12" HDPE) = 209.61 INV IN (DMH-35 15" HDPE) = 209.71 INV OUT (15" HDPE) = 209.36
DMH-27	RIM = 217.00 INV IN (CB-41 12" HDPE) = 213.80 INV IN (DMH-29 12" HDPE) = 213.59 INV IN (DMH-28 12" HDPE) = 214.29 INV OUT (DMH-35 15" HDPE) = 213.34
DMH-28	RIM = 220.17 INV IN (DMH-29 12" HDPE) = 217.56 INV OUT (DMH-27 12" HDPE) = 217.46
DMH-29	RIM = 223.21 INV IN (CB-43 12" HDPE) = 218.93 INV IN (CB-44 12" HDPE) = 219.93 INV IN (DMH-30 12" HDPE) = 220.00 INV OUT (DMH-28 12" HDPE) = 219.83
DMH-30	RIM = 224.95 INV IN (CB-45 12" HDPE) = 221.20 INV IN (CB-46 12" HDPE) = 221.45 INV OUT (DMH-29 12" HDPE) = 220.92
DMH-35	RIM = 215.70 INV IN (DMH-27 15" HDPE) = 212.38 INV OUT (DMH-25 15" HDPE) = 212.28

INVERT TABLE

STRUCTURE NAME	STRUCTURE DETAILS
CB-38	RIM = 212.86 INV OUT (DMH-25 12" HDPE) = 209.69
CB-39	RIM = 212.86 INV OUT (DMH-25 12" HDPE) = 209.69
CB-40	RIM = 217.04 INV OUT (DMH-27 12" HDPE) = 213.68
CB-41	RIM = 217.06 INV OUT (DMH-27 12" HDPE) = 213.89
CB-43	RIM = 223.17 INV OUT (DMH-29 12" HDPE) = 220.00
CB-44	RIM = 223.17 INV OUT (DMH-29 12" HDPE) = 220.00
CB-45	RIM = 224.46 INV OUT (DMH-30 12" HDPE) = 221.29
CB-46	RIM = 224.69 INV OUT (DMH-30 12" HDPE) = 221.53



SITE PLAN

**GRADING AND DRAINAGE PLAN
 5 OF 5**

DATE: APRIL 26, 2023
 PROJECT NUMBER: 19097
 DESIGNED BY: PB/KE/KF
 DRAWN BY: PB/MB/KF/KL
 CHECKED BY: KE
 C.24
 SHEET 24 OF 91

4/16/2024, L:\19097\19097_04 - Lot 2\CURRENT\19097 - Grading Plan.dwg
 Matthew Baker