



**HOWARD STEIN HUDSON**  
 114 Turnpike Road, Suite 2C  
 Chelmsford, MA 01824  
 www.hshassoc.com

PREPARED FOR:  
**55 BH LLC**  
 6 LYBERTY WAY, SUITE 203  
 WESTFORD, MA 01886

**PROPOSED MULTIFAMILY  
 DEVELOPMENT**  
 SUMMER STREET  
 WALPOLE, MA

REVISIONS:

NO	BY	DATE	DESCRIPTION
1	PB	9/14/20	REV. MULTIFAMILY
2	PB	10/14/20	REV. LAYOUT

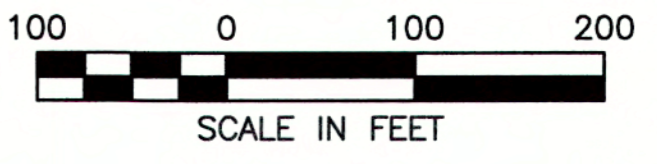
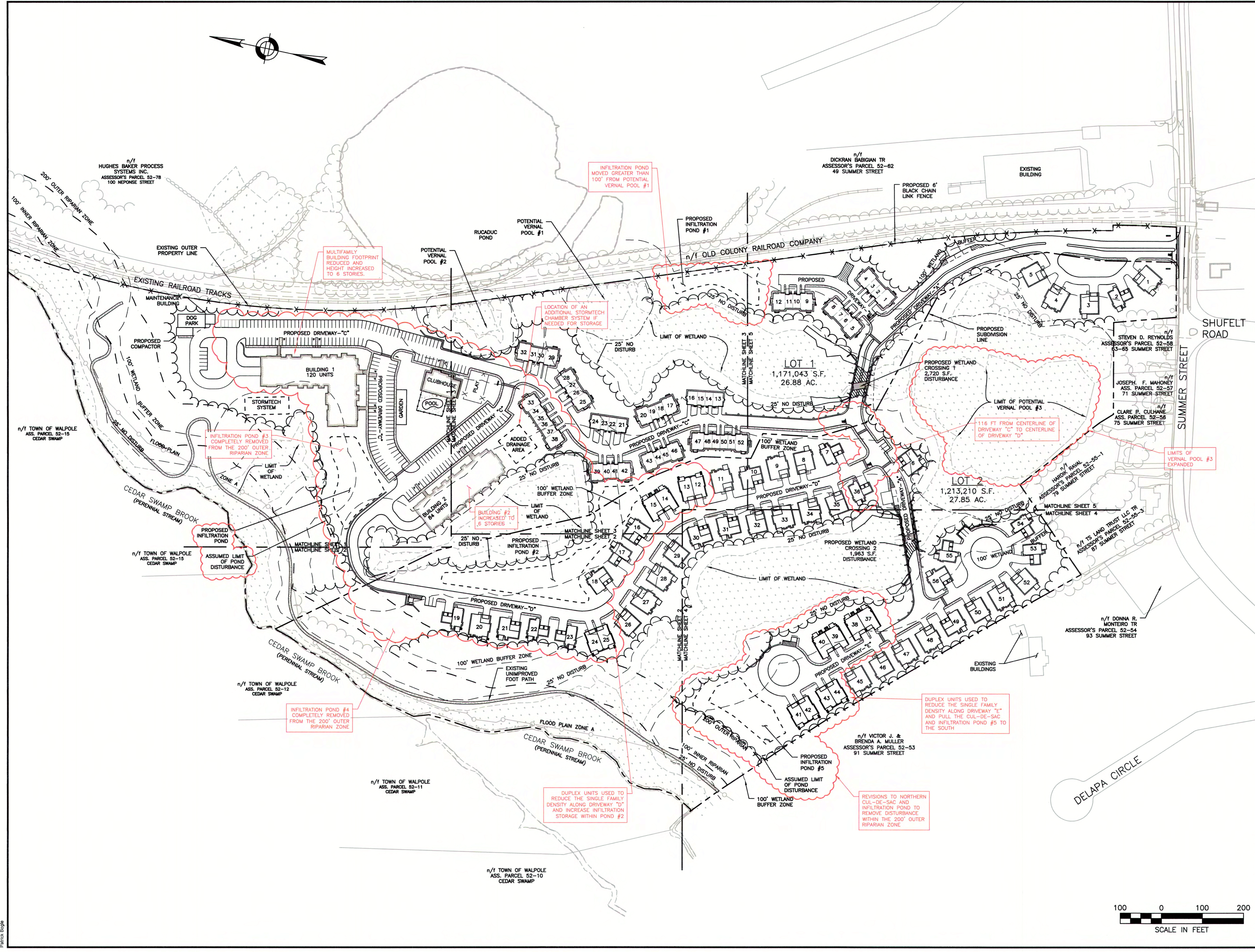


**SITE  
 PLAN**

**PROPOSED  
 SUBDIVISION /  
 OVERALL PLAN**

DATE:	JANUARY 10, 2020
PROJECT NUMBER:	19097
DESIGNED BY:	PB/KE/KF
DRAWN BY:	PB/KF
CHECKED BY:	KE

C.10



10/14/2020 11:00:00 AM CURRENT/REVISED MULTI-FAMILY CONCEPT LAYOUT/19097 - site prep-overall-cd-panels.dwg  
 Patrick Bogue



**HOWARD STEIN HUDSON**  
 114 Turnpike Road, Suite 2C  
 Chelmsford, MA 01824  
 www.hshassoc.com

PREPARED FOR:  
**55 BH LLC**  
 6 LYBERTY WAY, SUITE 203  
 WESTFORD, MA 01886

**PROPOSED MULTIFAMILY  
 DEVELOPMENT**  
 SUMMER STREET  
 WALPOLE, MA

REVISIONS:

NO	BY	DATE	DESCRIPTION
1	PB	9/14/20	REV. MULTIFAMILY
2	PB	10/14/20	REV. LAYOUT

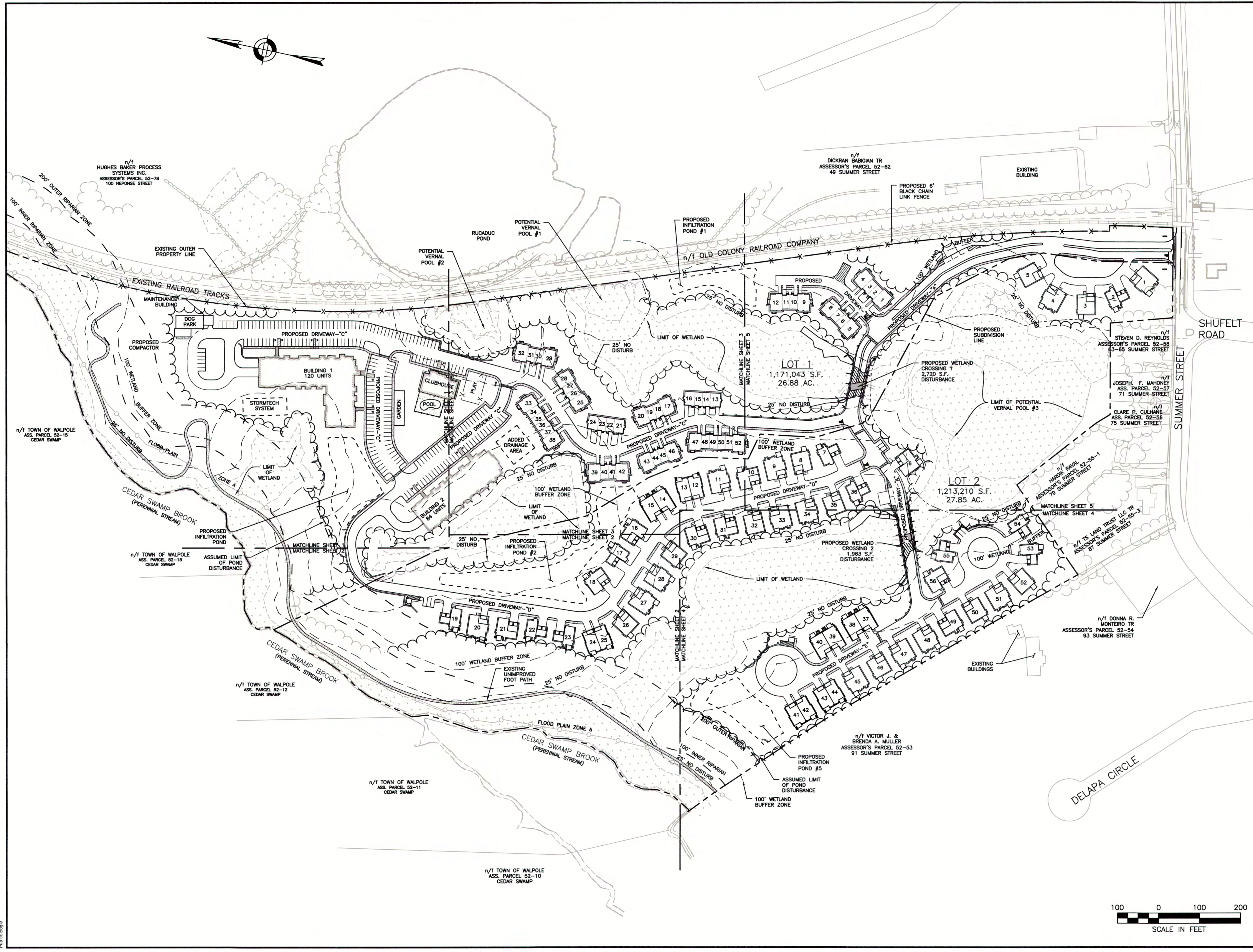


**SITE PLAN**

**PROPOSED SUBDIVISION /  
 OVERALL PLAN**

DATE:	JANUARY 10, 2020
PROJECT NUMBER:	19097
DESIGNED BY:	PB/KE/KF
DRAWN BY:	PB/KF
CHECKED BY:	KE

C.10



10/14/2020 11:09:07 CURRENT/REVISED MULTI-FAMILY CONCEPT LAYOUT 19097 - site prep-overall-openings.dwg  
 Patrick Boghe