



**HOWARD STEIN HUDSON**  
 114 Turnpike Road, Suite 2C  
 Chelmsford, MA 01824  
 www.hshassoc.com

PREPARED FOR:  
 FRH REALTY LLC  
 c/o FAIRFIELD RESIDENTIAL  
 5 BURLINGTON WOODS, SUITE 203  
 BURLINGTON, MA 01803

**PROPOSED MULTIFAMILY  
 DEVELOPMENT  
 SUMMER STREET  
 WALPOLE, MA**

REVISIONS:

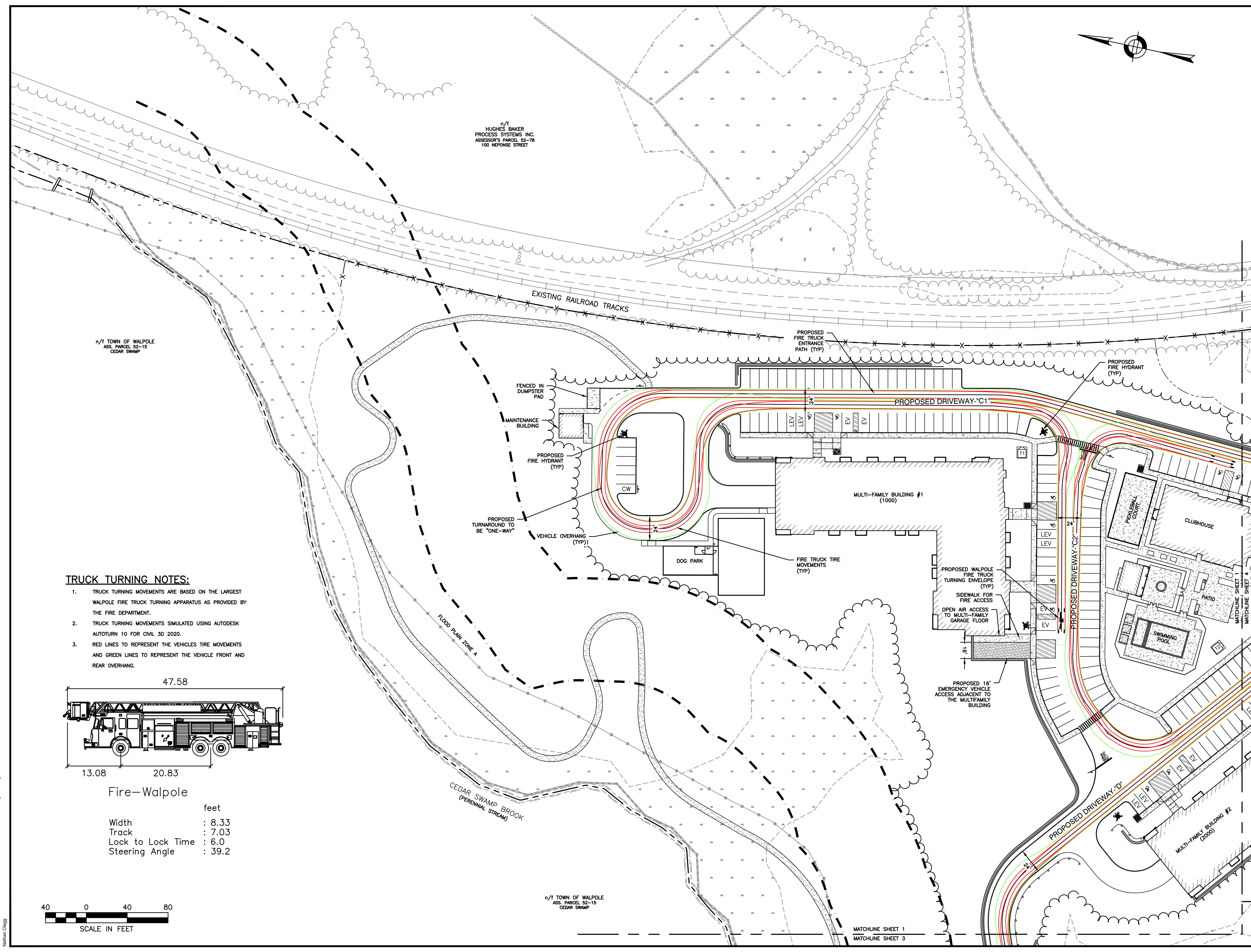
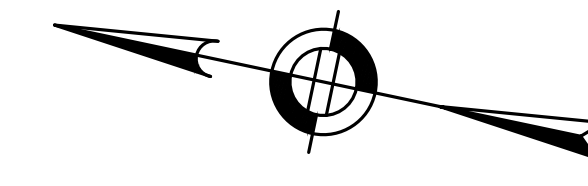
NO	BY	DATE	DESCRIPTION
1	PB	07/17/23	REV. TRUCK TURNING
2	PB	08/31/23	REV. PER PEER REVIEW

SITE PLAN

TRUCK TURNING  
 PLAN 1 OF 9

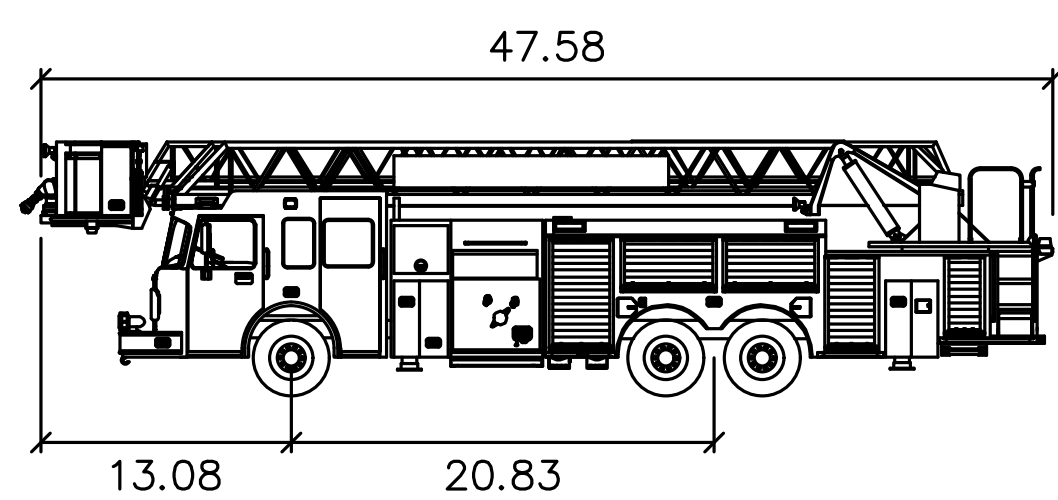
DATE:	JUNE 20, 2023
PROJECT NUMBER:	19097
DESIGNED BY:	PB/KE/KF
DRAWN BY:	PB/MB/KF/KL
CHECKED BY:	KE
	C.1

SHEET 1 OF 9



**TRUCK TURNING NOTES:**

1. TRUCK TURNING MOVEMENTS ARE BASED ON THE LARGEST WALPOLE FIRE TRUCK TURNING APPARATUS AS PROVIDED BY THE FIRE DEPARTMENT.
2. TRUCK TURNING MOVEMENTS SIMULATED USING AUTODESK AUTOTURN 10 FOR CIVIL 3D 2020.
3. RED LINES TO REPRESENT THE VEHICLES TIRE MOVEMENTS AND GREEN LINES TO REPRESENT THE VEHICLE FRONT AND REAR OVERHANG.



Fire-Walpole

	feet
Width	: 8.33
Track	: 7.03
Lock to Lock Time	: 6.0
Steering Angle	: 39.2



MATCHLINE SHEET 1  
 MATCHLINE SHEET 3



**HOWARD STEIN HUDSON**  
 114 Turnpike Road, Suite 2C  
 Chelmsford, MA 01824  
 www.hshassoc.com

PREPARED FOR:  
 FRH REALTY LLC  
 c/o FAIRFIELD RESIDENTIAL  
 5 BURLINGTON WOODS, SUITE 203  
 BURLINGTON, MA 01803

**PROPOSED MULTIFAMILY  
 DEVELOPMENT  
 SUMMER STREET  
 WALPOLE, MA**

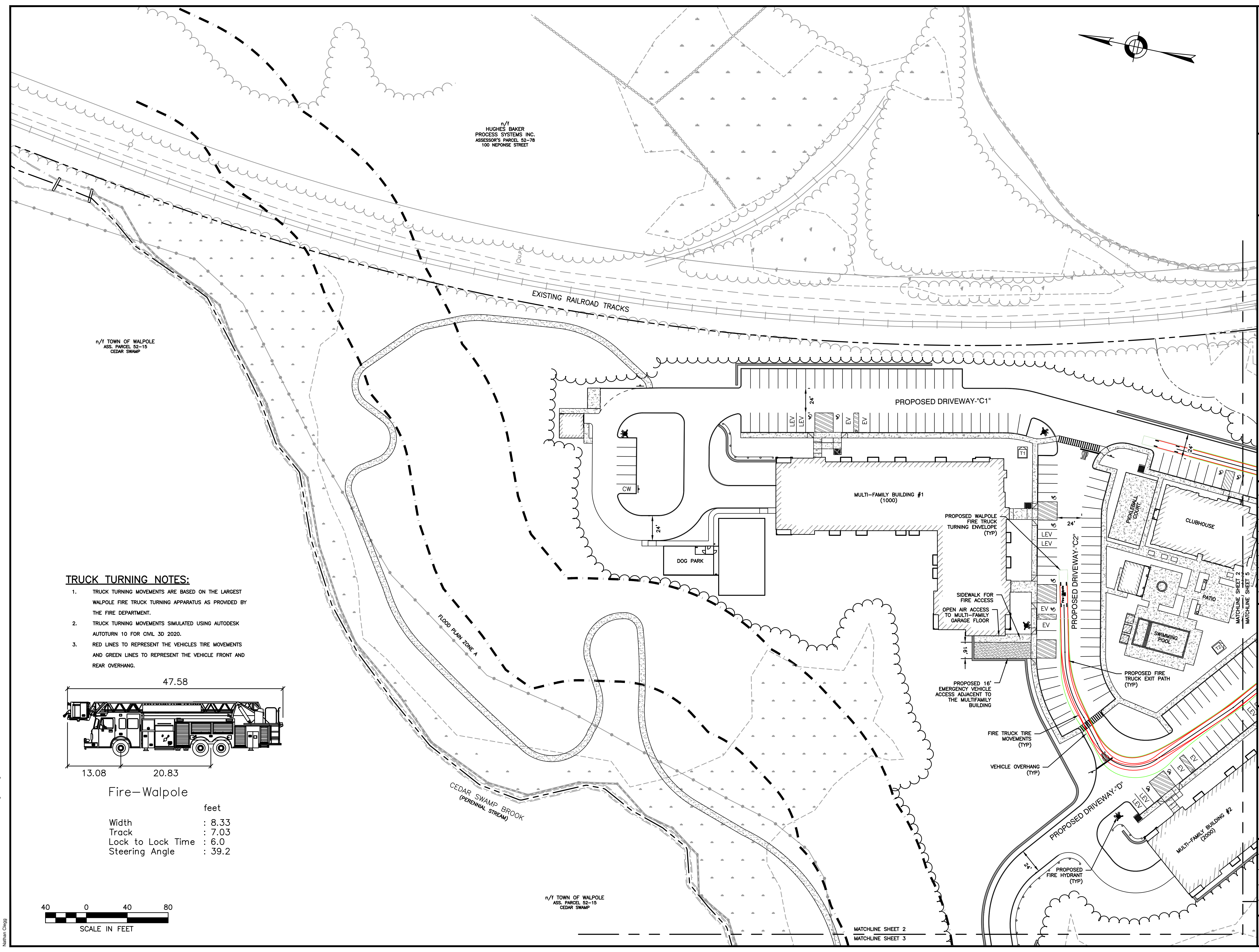
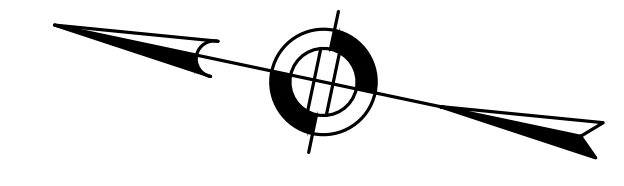
REVISIONS:

NO	BY	DATE	DESCRIPTION
1	PB	07/17/23	REV. TRUCK TURNING
2	PB	08/31/23	REV. PER PEER REVIEW

SITE PLAN

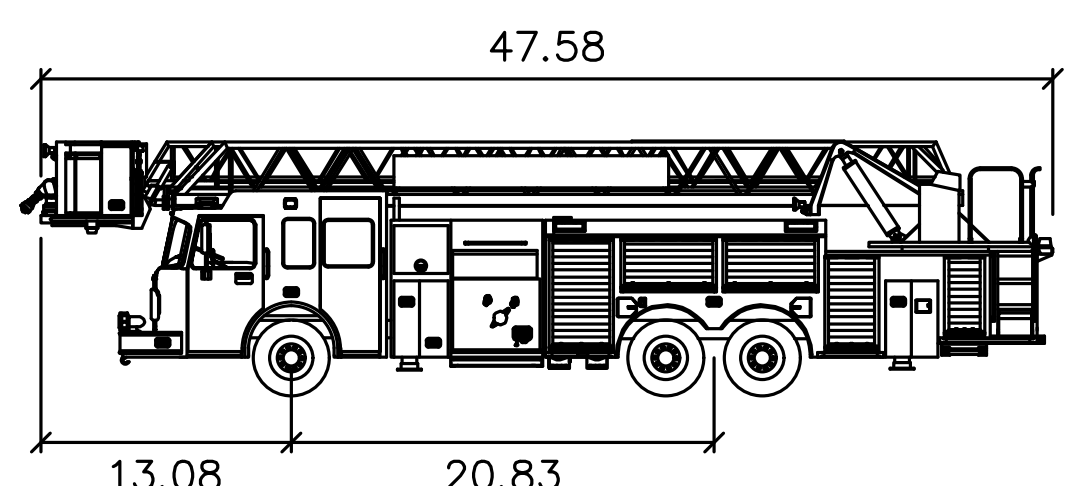
TRUCK TURNING  
 PLAN 2 OF 9

DATE:	JUNE 20, 2023
PROJECT NUMBER:	19097
DESIGNED BY:	PB/KE/KF
DRAWN BY:	PB/MB/KF/KL
CHECKED BY:	KE
	C.2



**TRUCK TURNING NOTES:**

1. TRUCK TURNING MOVEMENTS ARE BASED ON THE LARGEST WALPOLE FIRE TRUCK TURNING APPARATUS AS PROVIDED BY THE FIRE DEPARTMENT.
2. TRUCK TURNING MOVEMENTS SIMULATED USING AUTODESK AUTOTURN 10 FOR CIVIL 3D 2020.
3. RED LINES TO REPRESENT THE VEHICLES TIRE MOVEMENTS AND GREEN LINES TO REPRESENT THE VEHICLE FRONT AND REAR OVERHANG.



Fire-Walpole

	feet
Width	: 8.33
Track	: 7.03
Lock to Lock Time	: 6.0
Steering Angle	: 39.2



8/31/2023 L:\19097\19097\_04 - Lot 2\CURRENT\19097 - Vehicle Turning Plan.dwg Nathan Cheng



**HOWARD STEIN HUDSON**  
 114 Turnpike Road, Suite 2C  
 Chelmsford, MA 01824  
 www.hshassoc.com

PREPARED FOR:  
 FRH REALTY LLC  
 c/o FAIRFIELD RESIDENTIAL  
 5 BURLINGTON WOODS, SUITE 203  
 BURLINGTON, MA 01803

**PROPOSED MULTIFAMILY  
 DEVELOPMENT  
 SUMMER STREET  
 WALPOLE, MA**

REVISIONS:

NO	BY	DATE	DESCRIPTION
1	PB	07/17/23	REV. TRUCK TURNING
2	PB	08/31/23	REV. PER PEER REVIEW

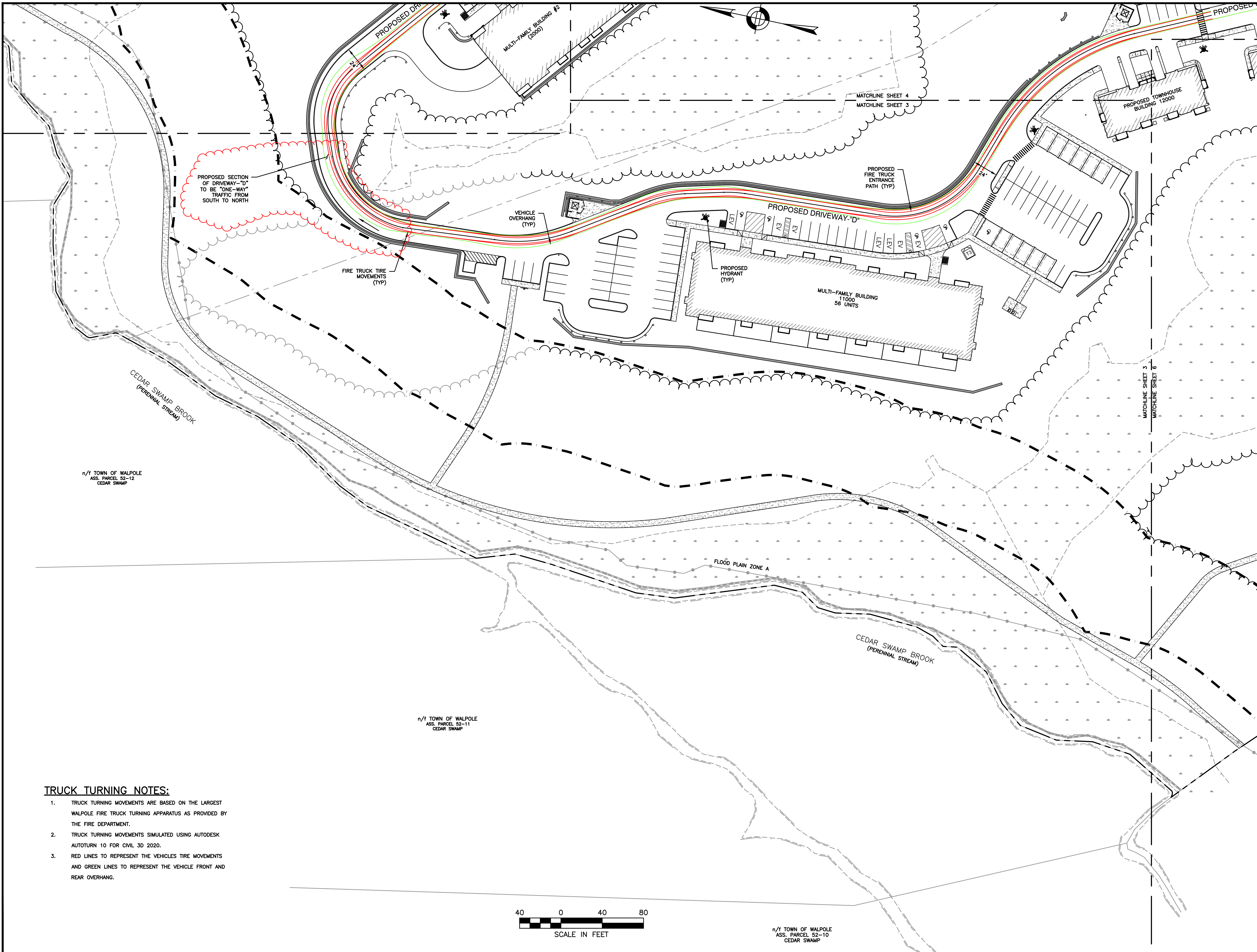
SITE  
 PLAN

TRUCK TURNING  
 PLAN 3 OF 9

DATE: JUNE 20, 2023  
 PROJECT NUMBER: 19097  
 DESIGNED BY: PB/KE/KF  
 DRAWN BY: PB/MB/KF/KL  
 CHECKED BY: KE

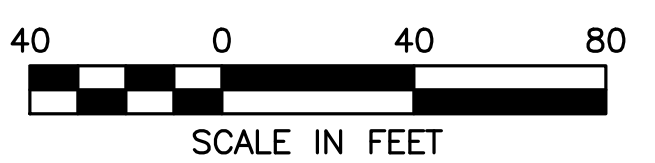
C.3

SHEET 3 OF 9



**TRUCK TURNING NOTES:**

1. TRUCK TURNING MOVEMENTS ARE BASED ON THE LARGEST WALPOLE FIRE TRUCK TURNING APPARATUS AS PROVIDED BY THE FIRE DEPARTMENT.
2. TRUCK TURNING MOVEMENTS SIMULATED USING AUTODESK AUTOTURN 10 FOR CIVIL 3D 2020.
3. RED LINES TO REPRESENT THE VEHICLES TIRE MOVEMENTS AND GREEN LINES TO REPRESENT THE VEHICLE FRONT AND REAR OVERHANG.

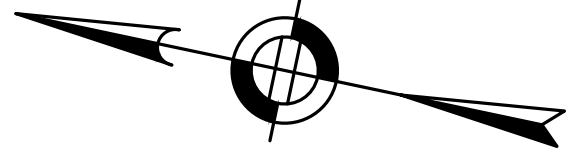


8/31/2023 L:\19097\19097\_04 - Lot 2\CURRENT\19097 - Vehicle Turning Plan.dwg Nathan Cheng

n/t TOWN OF WALPOLE  
 ASS. PARCEL 52-10  
 CEDAR SWAMP

n/t TOWN OF WALPOLE  
 ASS. PARCEL 52-12  
 CEDAR SWAMP

n/t TOWN OF WALPOLE  
 ASS. PARCEL 52-11  
 CEDAR SWAMP



RUCADUC POND

**TRUCK TURNING NOTES:**

1. TRUCK TURNING MOVEMENTS ARE BASED ON THE LARGEST WALPOLE FIRE TRUCK TURNING APPARATUS AS PROVIDED BY THE FIRE DEPARTMENT.
2. TRUCK TURNING MOVEMENTS SIMULATED USING AUTODESK AUTOTURN 10 FOR CIVIL 3D 2020.
3. RED LINES TO REPRESENT THE VEHICLES TIRE MOVEMENTS AND GREEN LINES TO REPRESENT THE VEHICLE FRONT AND REAR OVERHANG.

**HOWARD STEIN HUDSON**  
 114 Turnpike Road, Suite 2C  
 Chelmsford, MA 01824  
 www.hshassoc.com

PREPARED FOR:  
 FRH REALTY LLC  
 c/o FAIRFIELD RESIDENTIAL  
 5 BURLINGTON WOODS, SUITE 203  
 BURLINGTON, MA 01803

**PROPOSED MULTIFAMILY DEVELOPMENT**  
 SUMMER STREET  
 WALPOLE, MA

REVISIONS:

NO	BY	DATE	DESCRIPTION
1	PB	07/17/23	REV. TRUCK TURNING
2	PB	08/31/23	REV. PER PEER REVIEW

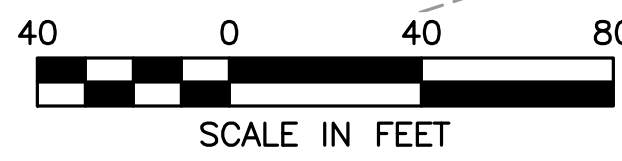
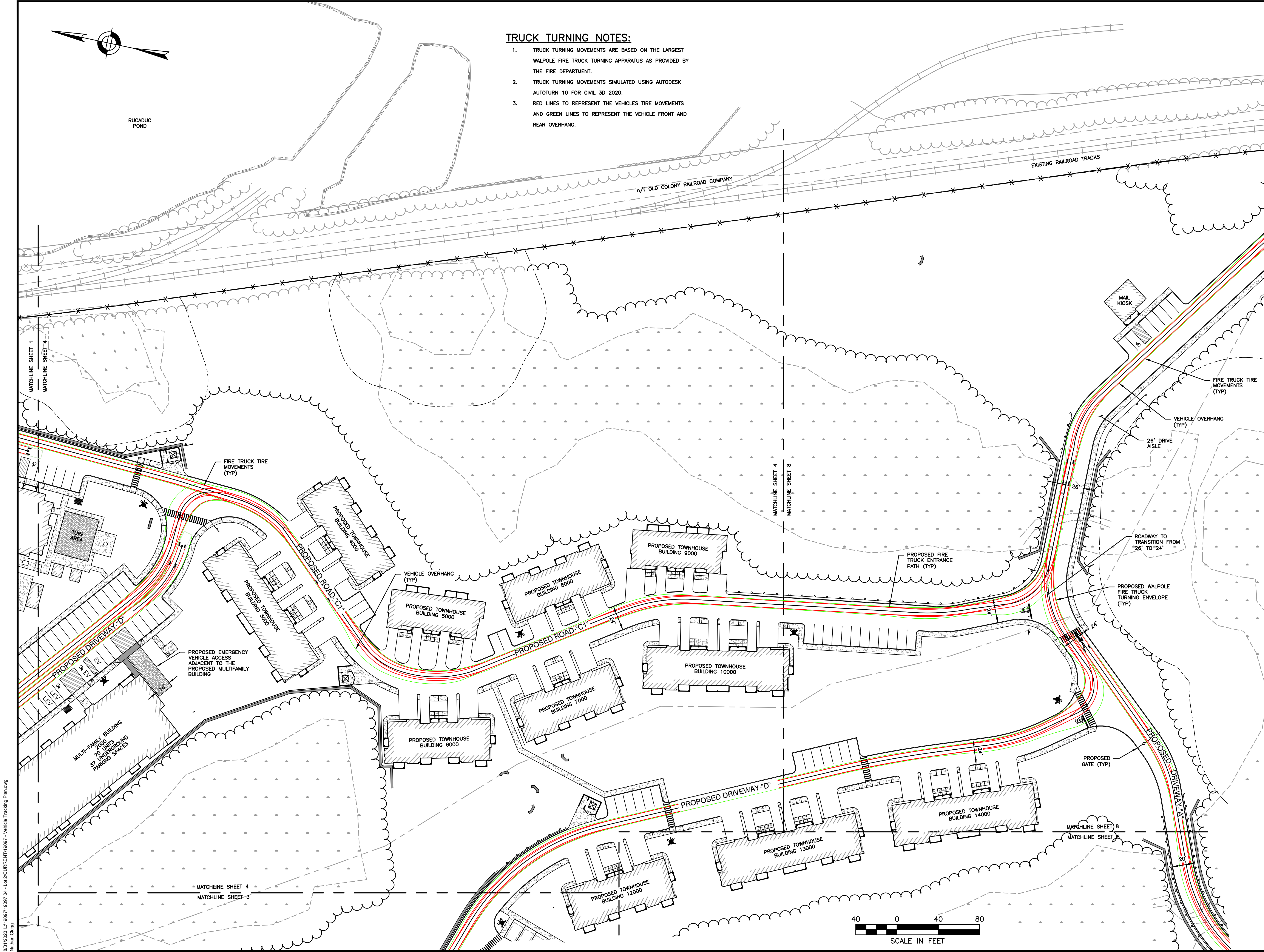
SITE PLAN

TRUCK TURNING PLAN 4 OF 9

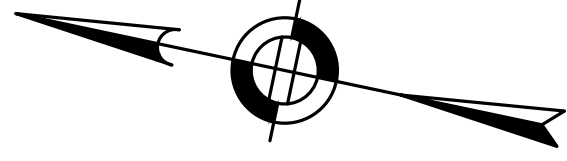
DATE: JUNE 20, 2023  
 PROJECT NUMBER: 19097  
 DESIGNED BY: PB/KE/KF  
 DRAWN BY: PB/MB/KF/KL  
 CHECKED BY: KE

C.4

SHEET 4 OF 9



8/31/2023, L:\19097\19097\_04 - Lot 2\CURRENT\19097 - Vehicle Tracking Plan.dwg  
 Nathan Cheng



RUCADUC POND

**TRUCK TURNING NOTES:**

1. TRUCK TURNING MOVEMENTS ARE BASED ON THE LARGEST WALPOLE FIRE TRUCK TURNING APPARATUS AS PROVIDED BY THE FIRE DEPARTMENT.
2. TRUCK TURNING MOVEMENTS SIMULATED USING AUTODESK AUTOTURN 10 FOR CIVIL 3D 2020.
3. RED LINES TO REPRESENT THE VEHICLES TIRE MOVEMENTS AND GREEN LINES TO REPRESENT THE VEHICLE FRONT AND REAR OVERHANG.

**HOWARD STEIN HUDSON**  
 114 Turnpike Road, Suite 2C  
 Chelmsford, MA 01824  
 www.hshassoc.com

PREPARED FOR:  
 FRH REALTY LLC  
 c/o FAIRFIELD RESIDENTIAL  
 5 BURLINGTON WOODS, SUITE 203  
 BURLINGTON, MA 01803

**PROPOSED MULTIFAMILY DEVELOPMENT**  
 SUMMER STREET  
 WALPOLE, MA

REVISIONS:

NO	BY	DATE	DESCRIPTION
1	PB	07/17/23	REV. TRUCK TURNING
2	PB	08/31/23	REV. PER PEER REVIEW

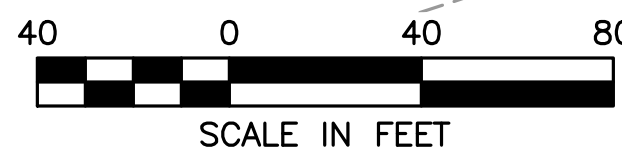
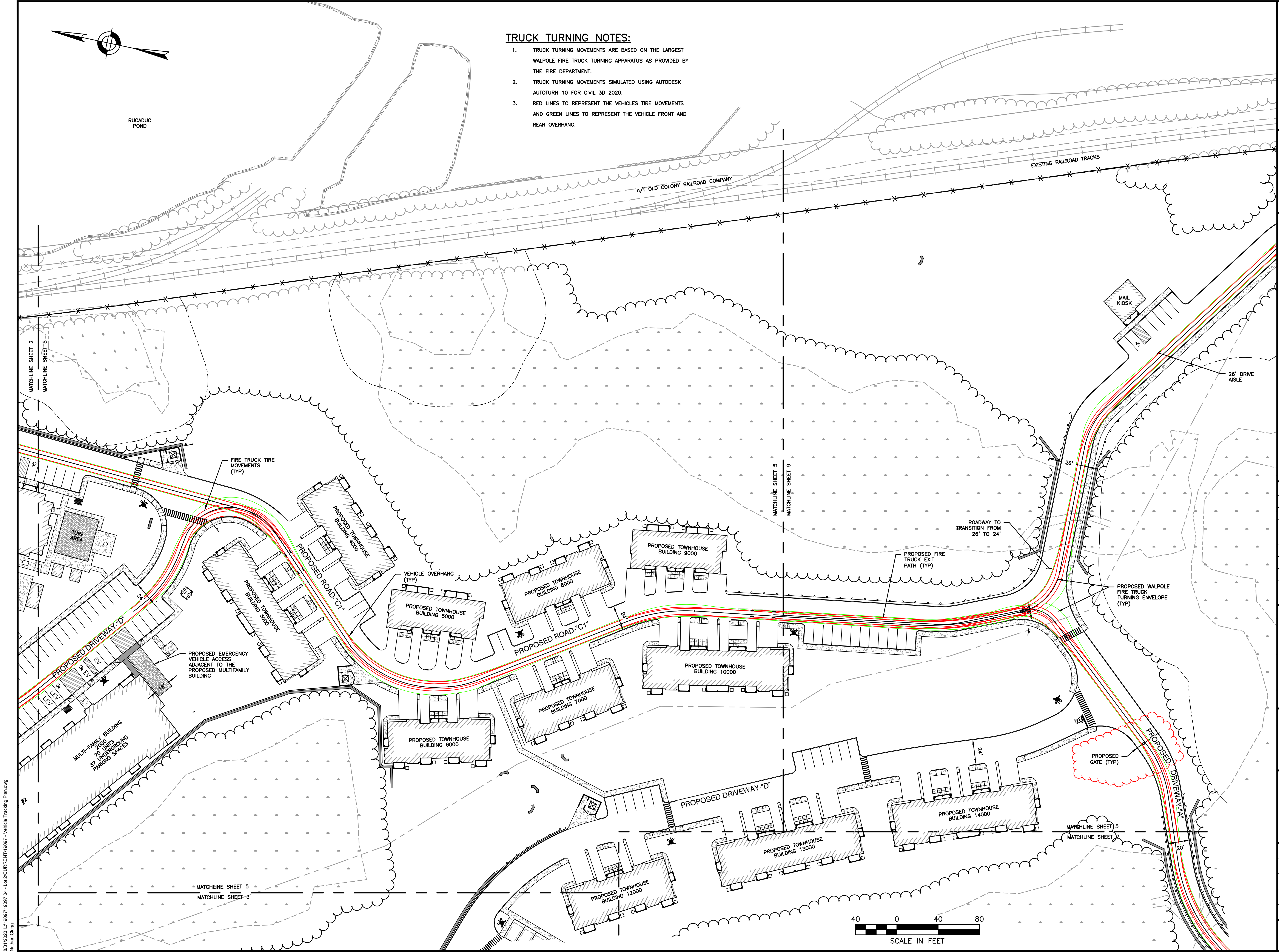
SITE PLAN

TRUCK TURNING PLAN 5 OF 9

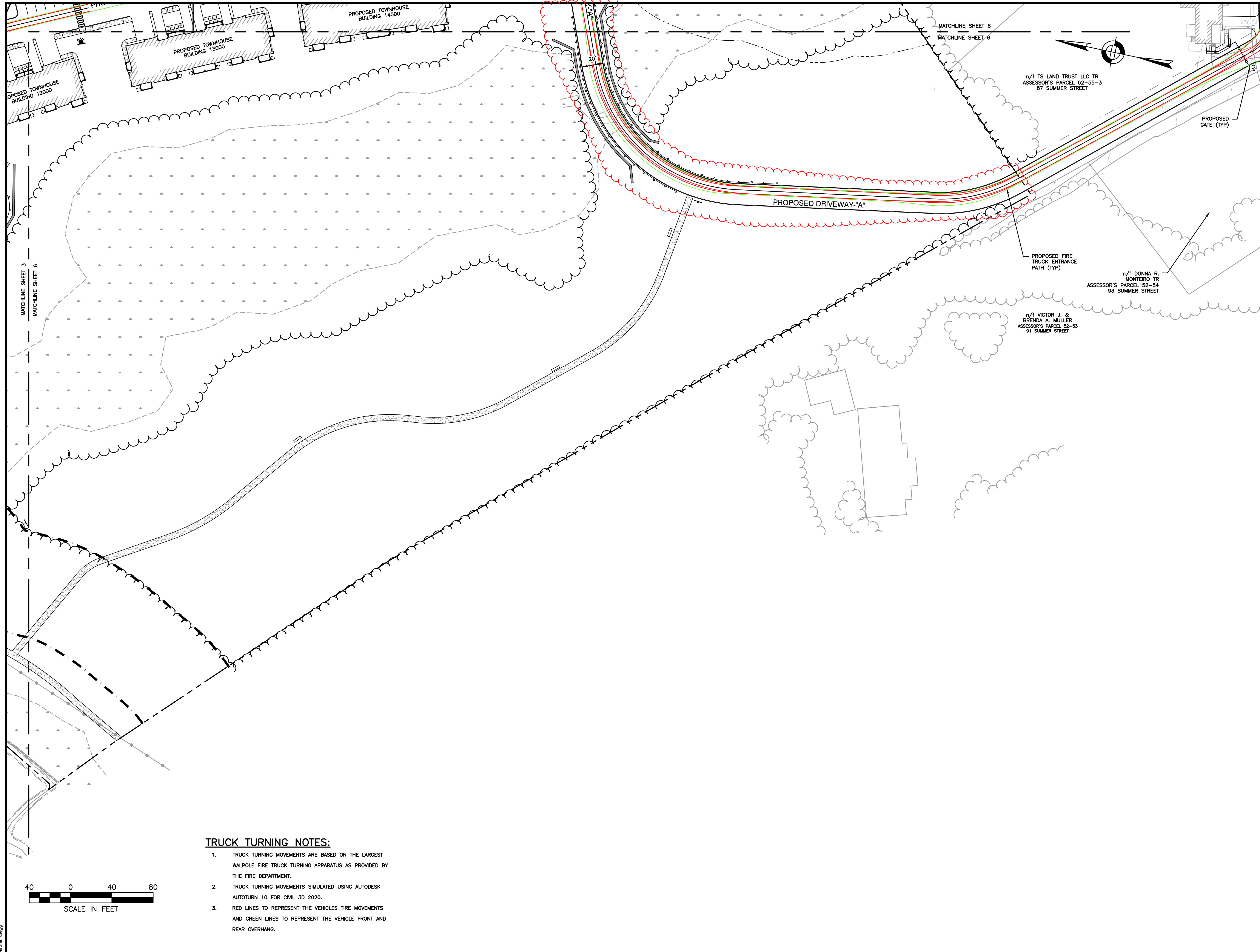
DATE: JUNE 20, 2023  
 PROJECT NUMBER: 19097  
 DESIGNED BY: PB/KE/KF  
 DRAWN BY: PB/MB/KF/KL  
 CHECKED BY: KE

C.5

SHEET 5 OF 9



8/31/2023, L:\19097\19097\_04 - Lot 2\CURRENT\19097 - Vehicle Tracking Plan.dwg  
 Nathan Cheng



PREPARED FOR:  
 FRH REALTY LLC  
 c/o FAIRFIELD RESIDENTIAL  
 5 BURLINGTON WOODS, SUITE 203  
 BURLINGTON, MA 01803

**PROPOSED MULTIFAMILY  
 DEVELOPMENT  
 SUMMER STREET  
 WALPOLE, MA**

REVISIONS:

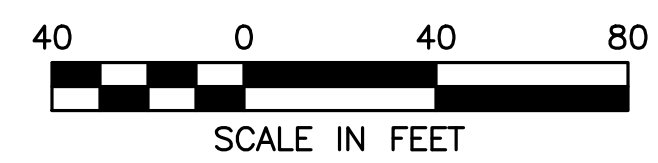
NO	BY	DATE	DESCRIPTION
1	PB	07/17/23	REV. TRUCK TURNING
2	PB	08/31/23	REV. PER PEER REVIEW

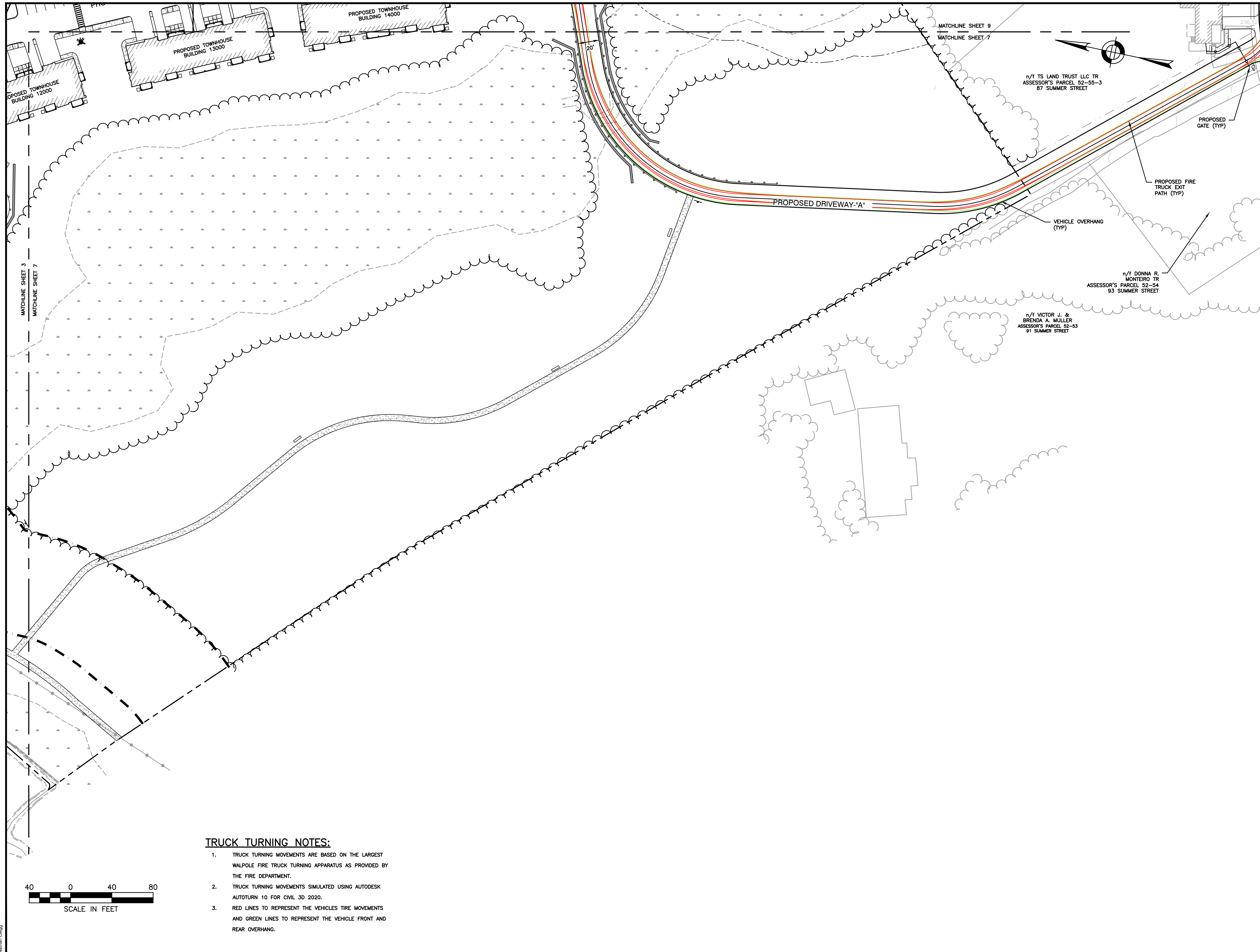
SITE  
PLAN

TRUCK TURNING  
PLAN 6 OF 9

DATE:	JUNE 20, 2023
PROJECT NUMBER:	19097
DESIGNED BY:	PB/KE/KF
DRAWN BY:	PB/MB/KF/KL
CHECKED BY:	KE
	C.6

- TRUCK TURNING NOTES:**
- TRUCK TURNING MOVEMENTS ARE BASED ON THE LARGEST WALPOLE FIRE TRUCK TURNING APPARATUS AS PROVIDED BY THE FIRE DEPARTMENT.
  - TRUCK TURNING MOVEMENTS SIMULATED USING AUTODESK AUTOTURN 10 FOR CIVIL 3D 2020.
  - RED LINES TO REPRESENT THE VEHICLES TIRE MOVEMENTS AND GREEN LINES TO REPRESENT THE VEHICLE FRONT AND REAR OVERHANG.





PREPARED FOR:  
 FRH REALTY LLC  
 c/o FAIRFIELD RESIDENTIAL  
 5 BURLINGTON WOODS, SUITE 203  
 BURLINGTON, MA 01803

**PROPOSED MULTIFAMILY  
 DEVELOPMENT  
 SUMMER STREET  
 WALPOLE, MA**

REVISIONS:

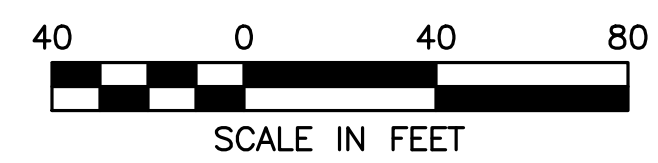
NO	BY	DATE	DESCRIPTION
1	PB	07/17/23	REV. TRUCK TURNING
2	PB	08/31/23	REV. PER PEER REVIEW

SITE  
 PLAN

TRUCK TURNING  
 PLAN 7 OF 9

DATE:	JUNE 20, 2023
PROJECT NUMBER:	19097
DESIGNED BY:	PB/KE/KF
DRAWN BY:	PB/MB/KF/KL
CHECKED BY:	KE
	C.7

- TRUCK TURNING NOTES:**
1. TRUCK TURNING MOVEMENTS ARE BASED ON THE LARGEST WALPOLE FIRE TRUCK TURNING APPARATUS AS PROVIDED BY THE FIRE DEPARTMENT.
  2. TRUCK TURNING MOVEMENTS SIMULATED USING AUTODESK AUTOTURN 10 FOR CIVIL 3D 2020.
  3. RED LINES TO REPRESENT THE VEHICLES TIRE MOVEMENTS AND GREEN LINES TO REPRESENT THE VEHICLE FRONT AND REAR OVERHANG.

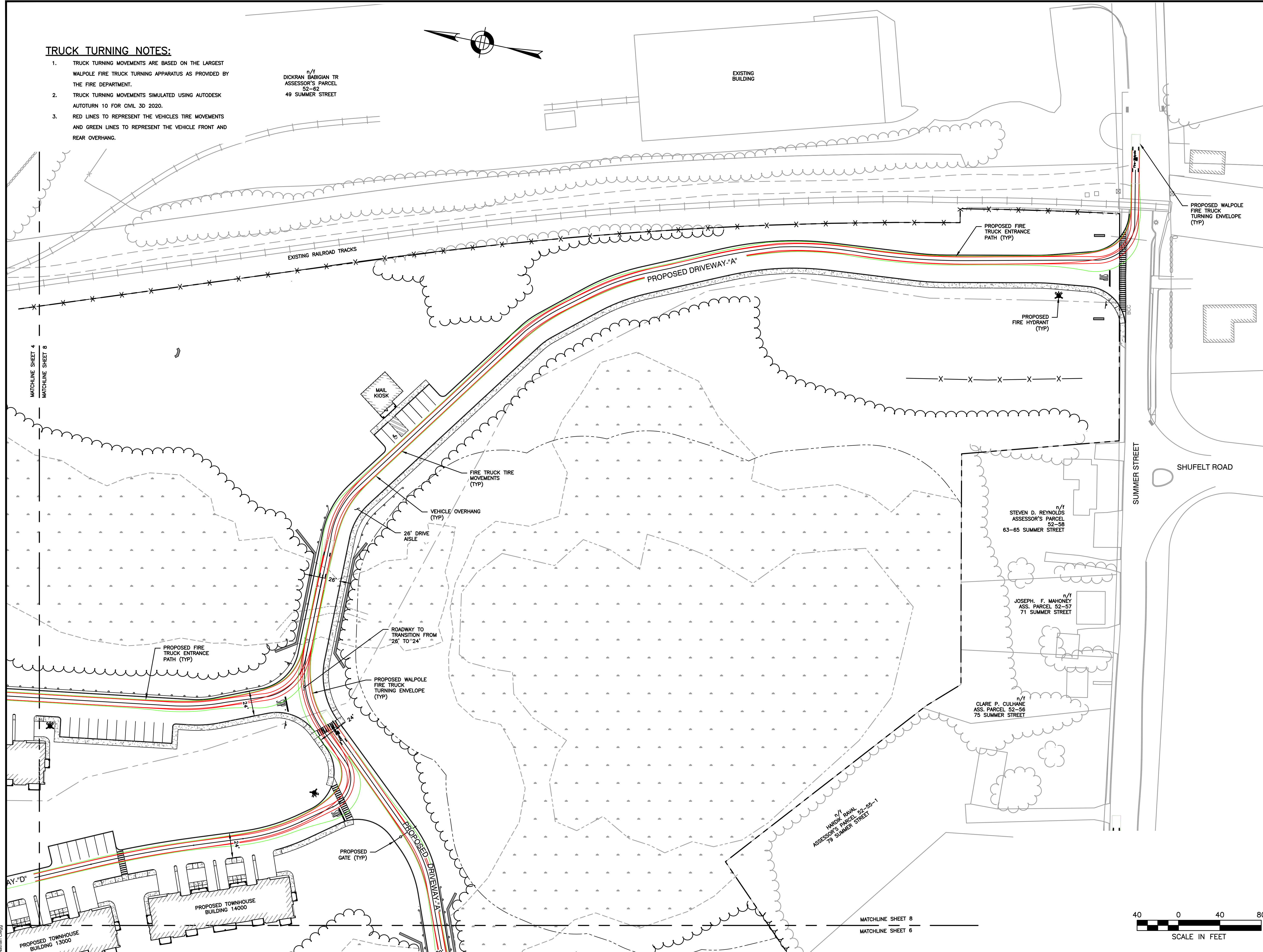
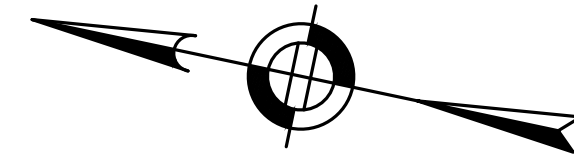


8/31/2023 L:\19097\19097\_04 - Lot 2\CURRENT\19097 - Vehicle Tracking Plan.dwg  
 Nathan Cheng

**TRUCK TURNING NOTES:**

1. TRUCK TURNING MOVEMENTS ARE BASED ON THE LARGEST WALPOLE FIRE TRUCK TURNING APPARATUS AS PROVIDED BY THE FIRE DEPARTMENT.
2. TRUCK TURNING MOVEMENTS SIMULATED USING AUTODESK AUTOTURN 10 FOR CIVIL 3D 2020.
3. RED LINES TO REPRESENT THE VEHICLES TIRE MOVEMENTS AND GREEN LINES TO REPRESENT THE VEHICLE FRONT AND REAR OVERHANG.

n/f  
DICKRAN BABIGIAN TR  
ASSESSOR'S PARCEL  
52-62  
49 SUMMER STREET



**HOWARD STEIN HUDSON**  
114 Turnpike Road, Suite 2C  
Chelmsford, MA 01824  
www.hshassoc.com

PREPARED FOR:  
FRH REALTY LLC  
c/o FAIRFIELD RESIDENTIAL  
5 BURLINGTON WOODS, SUITE 203  
BURLINGTON, MA 01803

**PROPOSED MULTIFAMILY  
DEVELOPMENT  
SUMMER STREET  
WALPOLE, MA**

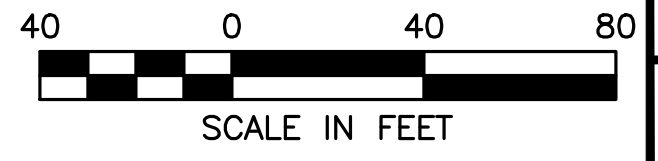
REVISIONS:

NO	BY	DATE	DESCRIPTION
1	PB	07/17/23	REV. TRUCK TURNING
2	PB	08/31/23	REV. PER PEER REVIEW

SITE PLAN

TRUCK TURNING  
PLAN 8 OF 9

DATE:	JUNE 20, 2023
PROJECT NUMBER:	19097
DESIGNED BY:	PB/KE/KF
DRAWN BY:	PB/MB/KF/KL
CHECKED BY:	KE



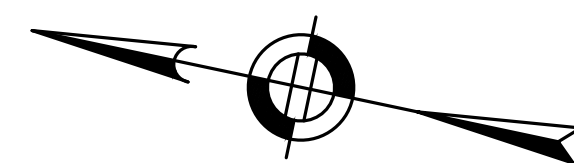
8/31/2023 L:\19097\19097\_04 - Lot 2\CURRENT\19097 - Vehicle Tracking Plan.dwg  
Nathan Cheng



**TRUCK TURNING NOTES:**

1. TRUCK TURNING MOVEMENTS ARE BASED ON THE LARGEST WALPOLE FIRE TRUCK TURNING APPARATUS AS PROVIDED BY THE FIRE DEPARTMENT.
2. TRUCK TURNING MOVEMENTS SIMULATED USING AUTODESK AUTOTURN 10 FOR CIVIL 3D 2020.
3. RED LINES TO REPRESENT THE VEHICLES TIRE MOVEMENTS AND GREEN LINES TO REPRESENT THE VEHICLE FRONT AND REAR OVERHANG.

n/i  
DICKRAN BABIGIAN TR  
ASSESSOR'S PARCEL  
52-62  
49 SUMMER STREET



EXISTING BUILDING

**HOWARD STEIN HUDSON**  
114 Turnpike Road, Suite 2C  
Chelmsford, MA 01824  
www.hshassoc.com

PREPARED FOR:  
FRH REALTY LLC  
c/o FAIRFIELD RESIDENTIAL  
5 BURLINGTON WOODS, SUITE 203  
BURLINGTON, MA 01803

**PROPOSED MULTIFAMILY  
DEVELOPMENT  
SUMMER STREET  
WALPOLE, MA**

REVISIONS:

NO	BY	DATE	DESCRIPTION
1	PB	07/17/23	REV. TRUCK TURNING
2	PB	08/31/23	REV. PER PEER REVIEW

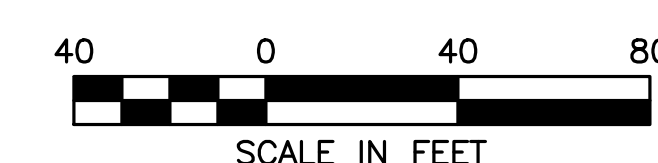
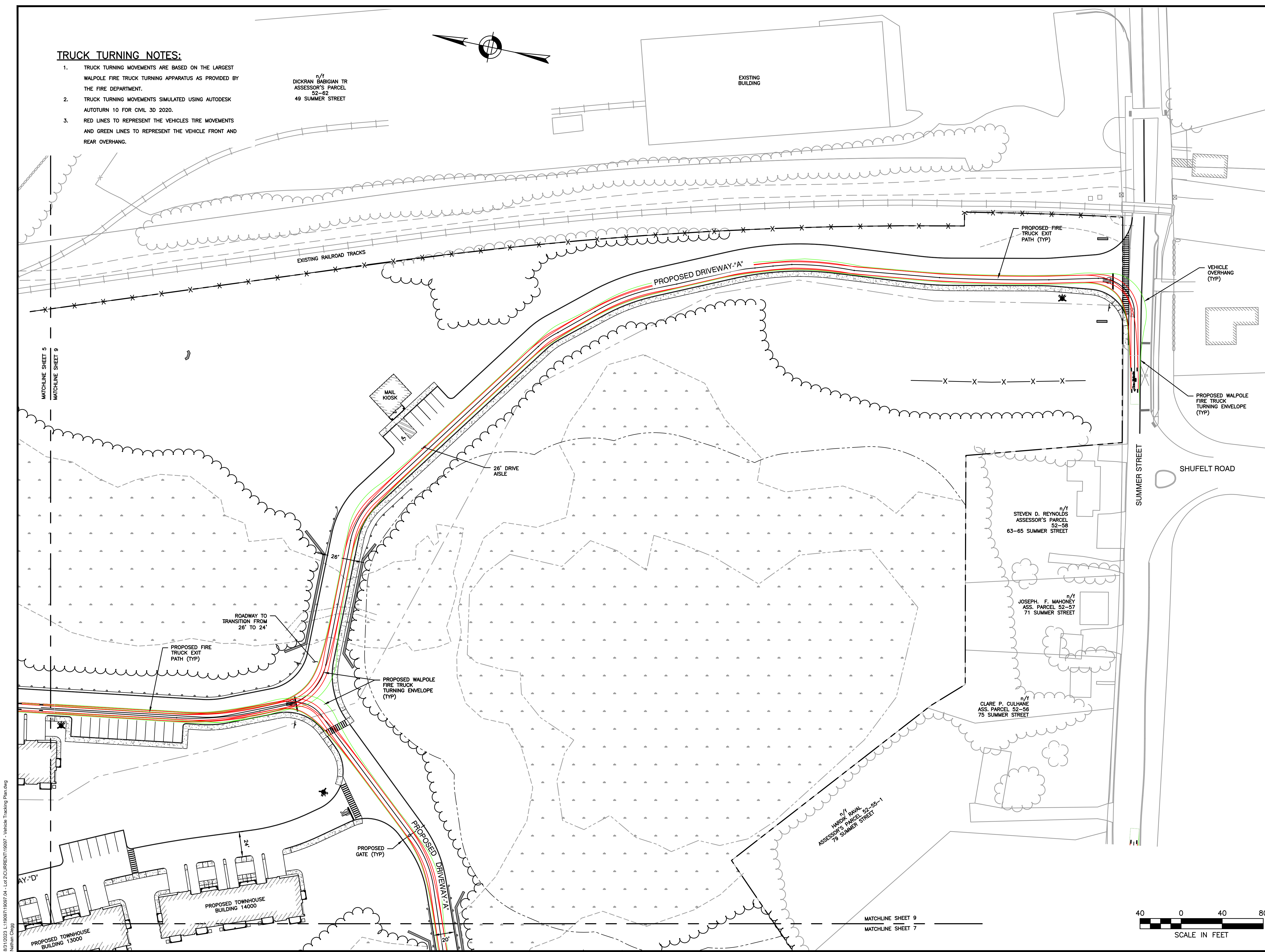
SITE PLAN

TRUCK TURNING  
PLAN 9 OF 9

DATE:	JUNE 20, 2023
PROJECT NUMBER:	19097
DESIGNED BY:	PB/KE/KF
DRAWN BY:	PB/MB/KF/KL
CHECKED BY:	KE

C.9

SHEET 9 OF 9



8/31/2023, L:\19097\19097\_04 - Lot 2\CURRENT\19097 - Vehicle Tracking Plan.dwg  
Nathan Cheng