



ENVIRONMENTAL CONSULTANTS

Sound Science. Creative Solutions.®

1900 West Park Drive, Suite 280  
Westborough, Massachusetts 01581  
Tel 413.256.0202  
www.swca.com

July 13, 2021

Walpole Conservation Commission  
Walpole Town Hall  
135 School Street, Room 212  
Walpole, MA 02081

Via Email to: [Lhershey@walpole-ma.gov](mailto:Lhershey@walpole-ma.gov)

**Re: Notice of Exempt Utility Maintenance Activities  
Eversource Line 456-522 Structure Replacement  
Walpole and Medfield, Massachusetts**

Dear Commission Members:

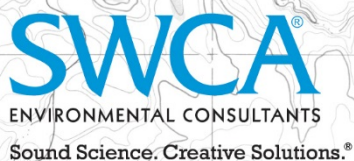
On behalf of Eversource Energy (Eversource), SWCA Environmental (SWCA) is notifying you of a proposed electrical utility line structure replacement project for Line 456-522 (the Project) spanning approximately from the West Walpole Substation on Main Street (Route 1A) in Walpole to County Street (Route 109) in Walpole. A portion of the proposed Project also crosses through the southeast corner of the Town of Medfield. These utility structures have surpassed their design life and replacement will improve the electrical reliability to the areas this line serves. The proposed work includes the replacement of 25 structures in total; 20 are in the Town of Walpole and five (5) are in the Town of Medfield. Of the 20 structures to be replaced in Walpole, two (2) are located within jurisdictional wetland resource areas and six (6) are located within buffer zone.

The work is exempt from the Wetlands Protection Act and implementing regulations in accordance with 310 CMR 10.02(2)(a)(2) as it consists of *“activities conducted to maintain, repair or replace, but not substantially change or enlarge an existing and lawfully-located structure used in the service of the public and used to provide electronic services, provided said work utilizes the best practical measures to avoid or minimize impacts to wetland resource areas outside the footprint of said structure.”*

## PROPOSED ACTIVITIES

The proposed work will entail the replacement of eight (8) wooden utility structures with new steel poles within Bordering Vegetated Wetlands (BVW) or their 100-foot buffer zone. At these structure replacement locations, it is assumed that 100-foot by 100-foot work pad (maximum) will generally be necessary. Within BVW or other sensitive areas (e.g., areas of moderate-high cultural sensitivity), work will be conducted from temporary wooden construction mat platforms to minimize ground disturbance and impacts to vegetation. Where work is located within buffer zone, the work pad area may include temporary re-grading or ground disturbance to achieve a level surface for safe equipment operation.

There are existing established access roads throughout the majority of the right-of-way (ROW), as well as roadways that cross the ROW which provide suitable access points., Appropriate erosion controls will be



installed prior to the commencement of work. The existing access routes and locations of the work pads are depicted on the attached drawings.

## PROTECTIVE MEASURES

Ground disturbance associated with the structure replacements will occur within wetland resource areas and within the associated 100-foot buffer zone. The area of disturbance was calculated by assuming the maximum potential amount of work area required for access and work pad locations. Each structure replacement will require a work area of approximately 10,000 square feet (sf) (100-ft x 100-ft) to allow for the set-up and staging of work vehicles and materials and to provide for safe and stable access. In addition, all access roads through wetlands, whether existing or not, will be matted. In Walpole, a total of approximately 41,040 sf of temporary matting associated with the pole replacements will occur within BVW.

Erosion and sedimentation controls will be used adjacent to the wetland areas if warranted. Following the completion of construction activities, disturbed upland areas will be re-graded and mulched with straw as required. A USGS index map of the area and aerial photographs depicting proposed work areas are attached.

If you have any questions or require additional information, please contact me at (413) 658-2027 or via email at [Rebecca.weissman@swca.com](mailto:Rebecca.weissman@swca.com).

Sincerely,

A handwritten signature in blue ink that reads 'Rebecca Weissman'. The signature is written in a cursive style and is positioned below the 'Sincerely,' text.

Rebecca Weissman, PWS, NHCWS  
Natural Resources Team Lead

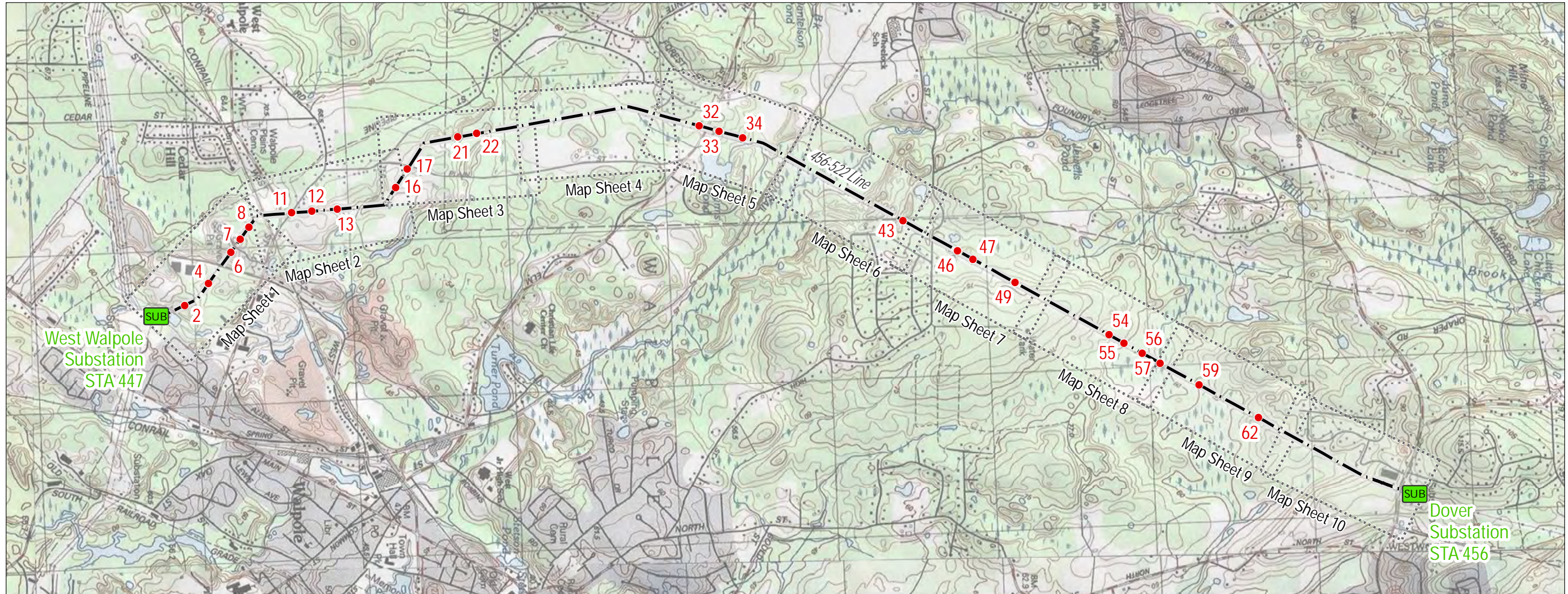
Enclosures

Copy: Matthew Waldrip – Eversource Energy

# 2021 - 456 522 Line Structure Replacement Project

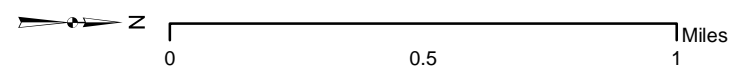
WALPOLE, MEDFIELD, & DOVER, MA  
Environmental Resources Map

**Final Map Set**  
Date: July 13, 2021



### Legend

- Existing Structures
- Structure to be Replaced
- SUB Queried Substations
- - - Eversource Line
- ⋯ Map Sheet Matchline



**INDEX OF FIGURES**  
Title Sheet / Index Map  
Map Sheets 1-10

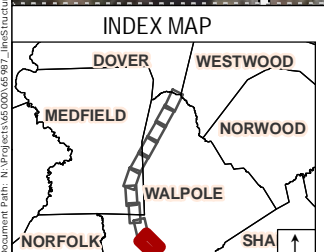
NO.	DATE	REVISIONS
1	7/13	Finalized Map

PREPARED FOR:  
**EVERSOURCE**  
ENERGY  
107 Selden Street  
Berlin, CT 06037

PREPARED BY:  
**SWCA**  
ENVIRONMENTAL CONSULTANTS  
15 Research Drive  
Amherst, MA 01002



THIS MAPPING PRODUCT HAS BEEN CREATED TO COMPLY WITH SUBMITTAL REQUIREMENTS TO OBTAIN CERTAIN REGULATORY APPROVALS AND, AS SUCH, THERE IS NO RELIANCE ON THE INFORMATION CONTAINED HEREIN FOR ANY OTHER PURPOSE.



Legend	
● Culvert	—x—x Fence
● Existing Structure	○ Stonewall
● Proposed Structure	— Eversource Line
● Existing Structure to be Removed	— Contour Line
SUB Substation	— Delineated Wetland Boundary
Gate	100' Buffer to BVW/IW
Existing Access (all necessary rights in place)	Existing Right-of-Way (ROW)
Roads	Proposed Access (all rights to be verified)
Railroad	Temporary Construction Matting
Map Sheet Matchline	Delineated Open Water
Field Delineated Wetland	Approximate Open Water (not delineated)
Work Pad	Eversource Owned Property
Municipal Boundaries	FEMA 100-Year Flood Zone
	Areas of Moderate-High Archeological Sensitivity

NO.	DATE	REVISIONS

**EVERSOURCE ENERGY**

**2021 - 456-522 Line Structure Replacement Project**  
**Environmental Resources Map**

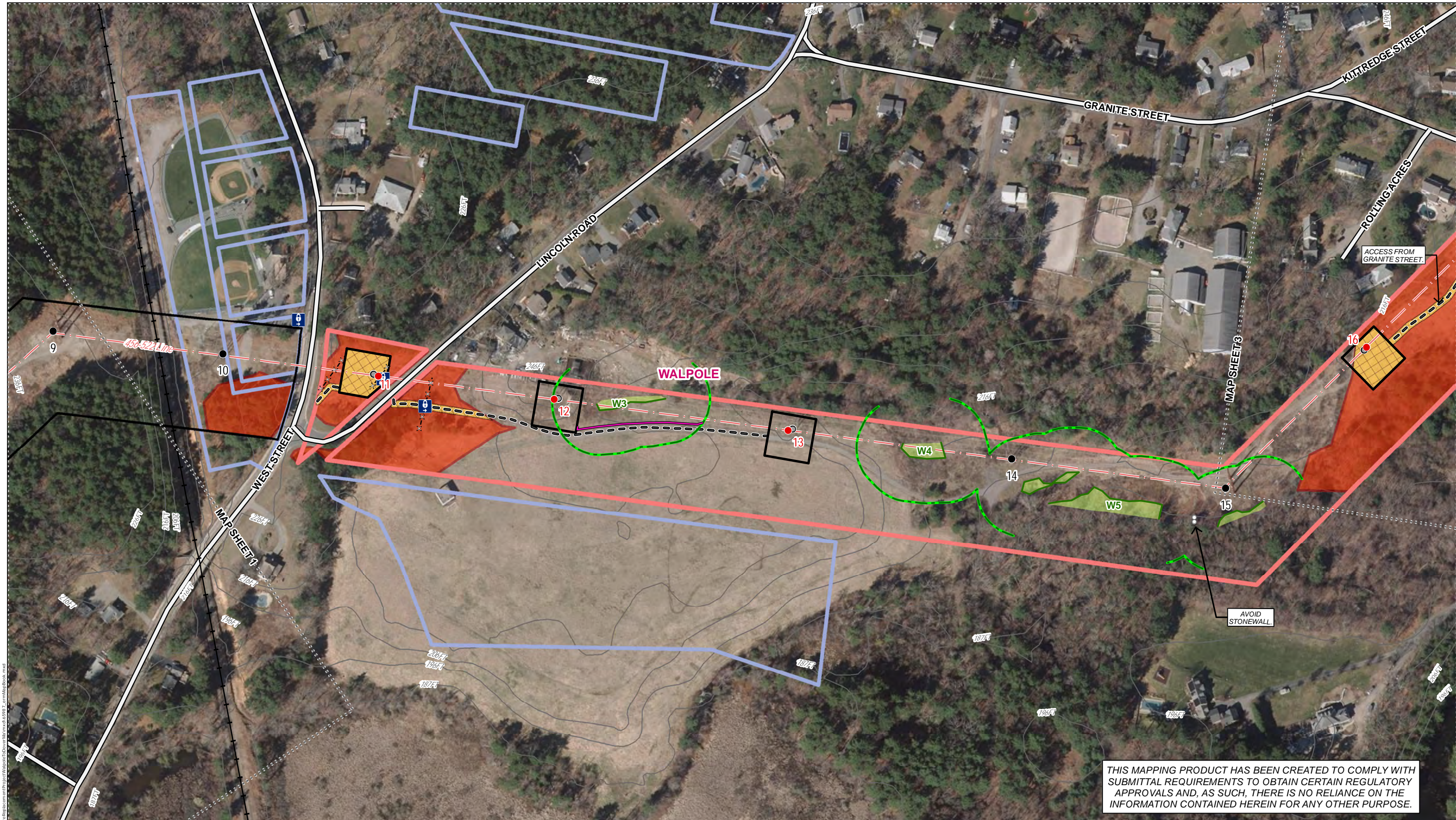
Walpole, Medfield, & Dover, MA      Map Sheet 1 of 10

Date: July, 2021

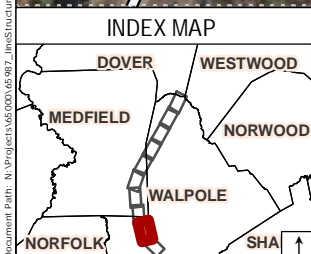
**CONFIDENTIAL**

**SWCA**  
ENVIRONMENTAL CONSULTANTS

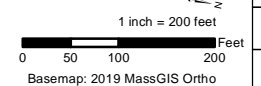
Document Path: N:\Projects\2021\05\21 - 456-522 Line Structure Replacement Project\Walpole\Drawings\456-522 - 456-522 Line Structure Replacement Project.mxd  
 User: jrm/MapBook.mxd



THIS MAPPING PRODUCT HAS BEEN CREATED TO COMPLY WITH SUBMITTAL REQUIREMENTS TO OBTAIN CERTAIN REGULATORY APPROVALS AND, AS SUCH, THERE IS NO RELIANCE ON THE INFORMATION CONTAINED HEREIN FOR ANY OTHER PURPOSE.



Legend	
● Existing Structure	⊗ Fence
● Proposed Structure	⊘ Stonewall
● Existing Structure to be Removed	— Eversource Line
⊕ Gate	— Contour Line
— Delineated Wetland Boundary	— Sediment Control Barrier
— 100' Buffer to BVW/IVW	— Existing Right-of-Way (ROW)
— Existing Access (all necessary rights in place)	— Roads
— Railroads	— Map Sheet Matchline
— Temporary Construction Matting	— Work Pad
— Field Delineated Wetland	— Municipal Boundaries
— Eversource Owned Property	— Municipal Protected & Recreational Open Space
— Areas of Moderate-High Archeological Sensitivity	



NO.	DATE	REVISIONS

**EVERSOURCE ENERGY**

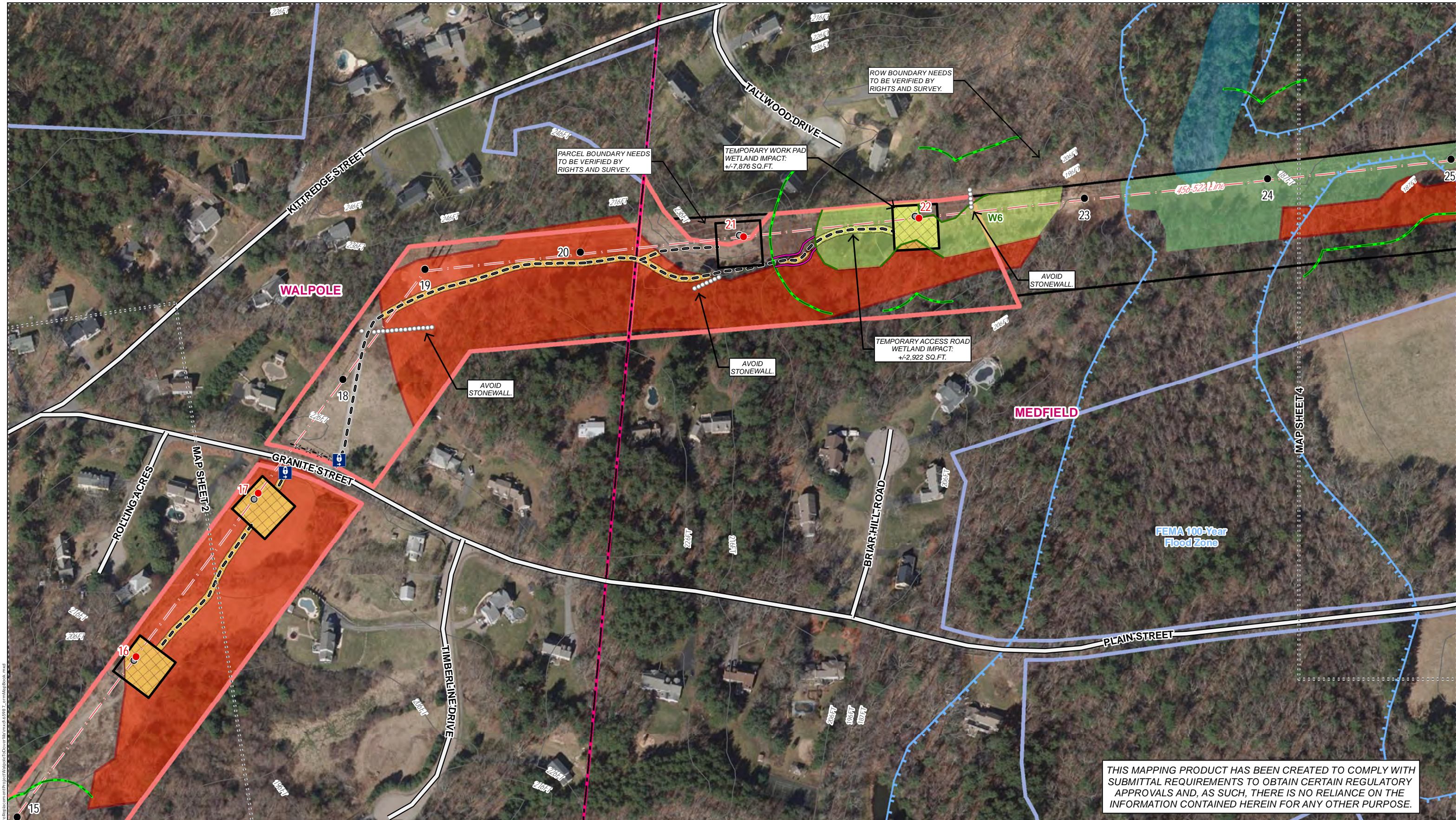
**2021 - 456 522 Line Structure Replacement Project**  
**Environmental Resources Map**

Walpole, Medfield, & Dover, MA      Map Sheet 2 of 10

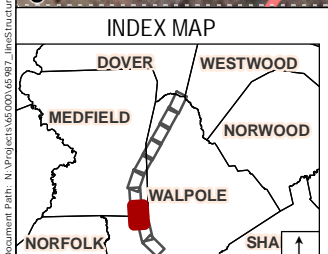
Date: July, 2021

**CONFIDENTIAL**

**SWCA**  
ENVIRONMENTAL CONSULTANTS

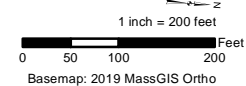


THIS MAPPING PRODUCT HAS BEEN CREATED TO COMPLY WITH SUBMITTAL REQUIREMENTS TO OBTAIN CERTAIN REGULATORY APPROVALS AND, AS SUCH, THERE IS NO RELIANCE ON THE INFORMATION CONTAINED HEREIN FOR ANY OTHER PURPOSE.



Legend	
● Existing Structure	— Contour Line
● Proposed Structure	— Delineated Wetland Boundary
● Existing Structure to be Removed	— 100' Buffer to BVW/IVW
Ⓜ Gate	— Sediment Control Barrier
ⓧ Fence	— Existing Right-of-Way (ROW)
○ Stonewall	— Eversource Line
— Existing Access (all necessary rights in place)	— Approximate Wetland (not delineated)
— Roads	— Approximate Open Water (not delineated)
— Map Sheet Matchline	— Work Pad
— Temporary Construction Matting	— Municipal Boundaries
— Field Delineated Wetland	— Eversource Owned Property
— Municipal Protected & Recreational Open Space	
— FEMA 100-Year Flood Zone	
— Areas of Moderate-High Archeological Sensitivity	

NO.	DATE	REVISIONS



**EVERSOURCE ENERGY**

**2021 - 456 522 Line Structure Replacement Project**  
**Environmental Resources Map**

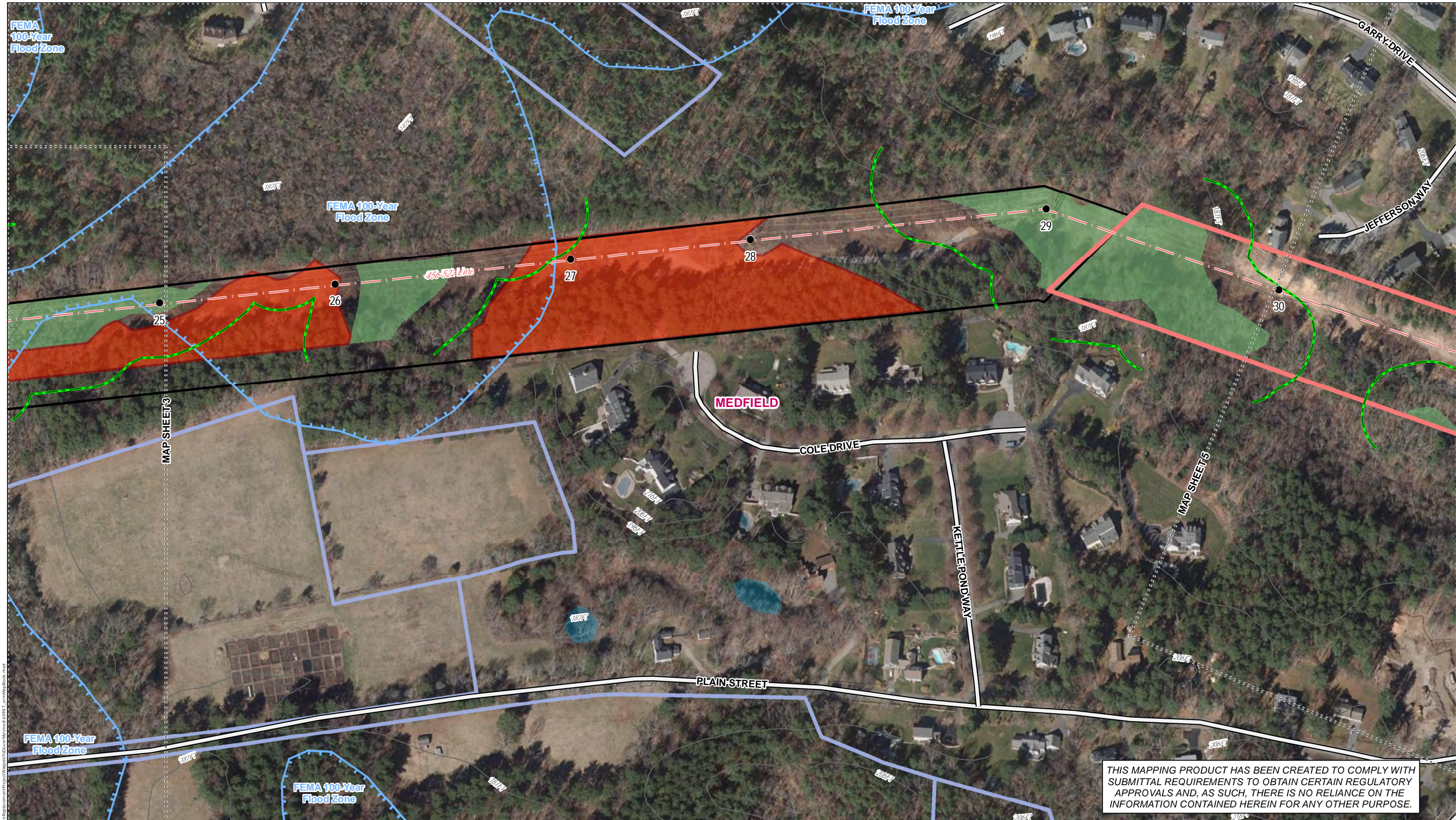
Walpole, Medfield, & Dover, MA

Map Sheet 3 of 10

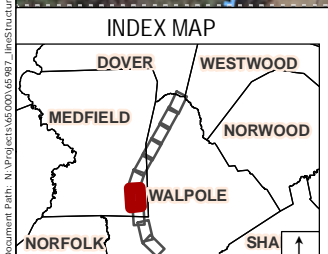
Date: July, 2021

**CONFIDENTIAL**

**SWCA**  
ENVIRONMENTAL CONSULTANTS

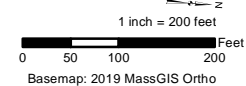


THIS MAPPING PRODUCT HAS BEEN CREATED TO COMPLY WITH SUBMITTAL REQUIREMENTS TO OBTAIN CERTAIN REGULATORY APPROVALS AND, AS SUCH, THERE IS NO RELIANCE ON THE INFORMATION CONTAINED HEREIN FOR ANY OTHER PURPOSE.



Legend	
● Existing Structure	100' Buffer to BVW/IVW
— Eversource Line	Approximate Wetland (not delineated)
— Contour Line	Approximate Open Water (not delineated)
— Roads	— Municipal Boundaries
⋯ Map Sheet Matchline	— Eversource Owned Property
— Municipal Protected & Recreational Open Space	— Municipal Protected & Recreational Open Space
— FEMA 100-Year Flood Zone	— Areas of Moderate-High Archeological Sensitivity

NO.	DATE	REVISIONS



**EVERSOURCE ENERGY**

**2021 - 456 522 Line Structure Replacement Project**  
**Environmental Resources Map**

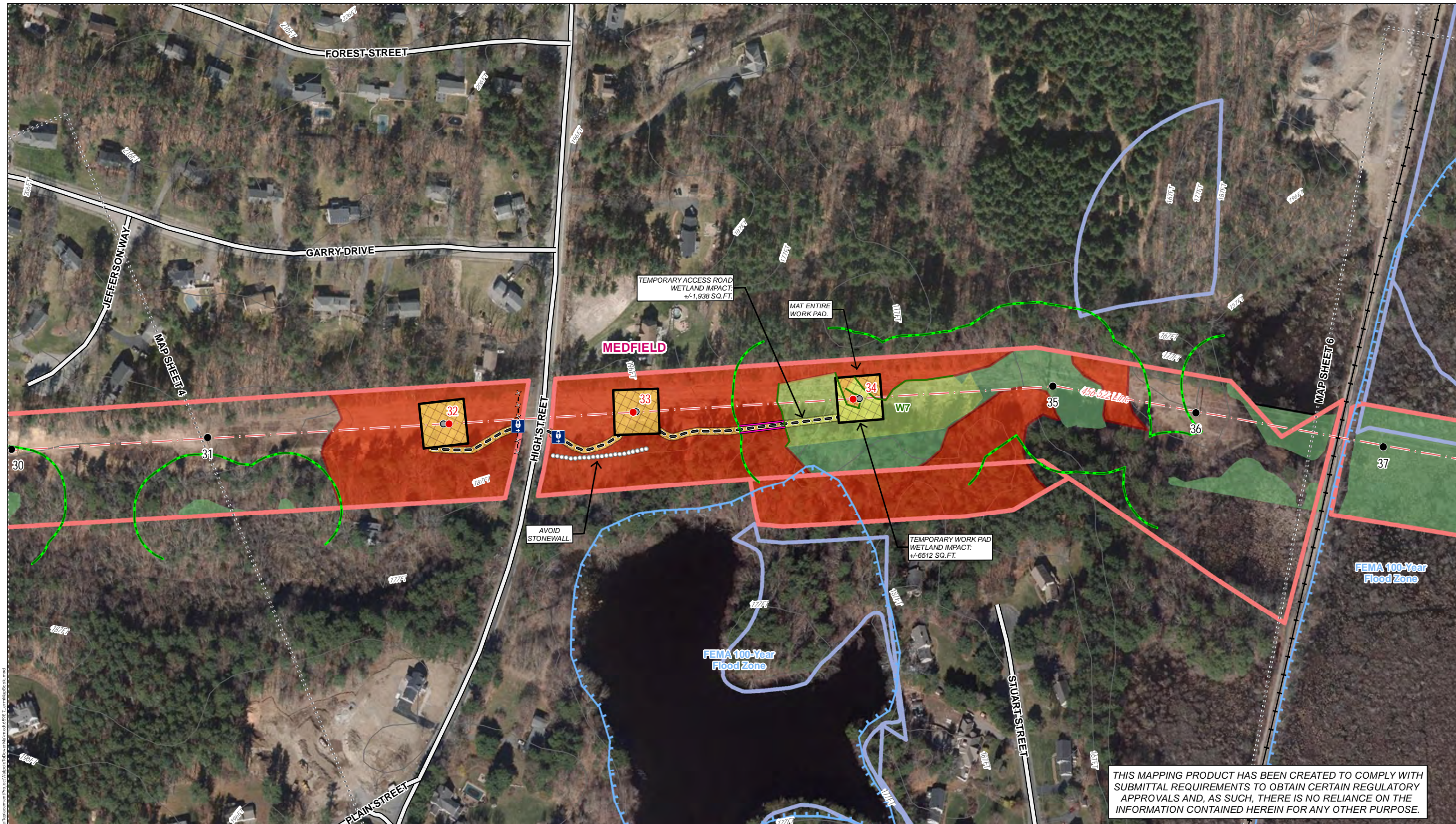
Walpole, Medfield, & Dover, MA      Map Sheet 4 of 10

Date: July, 2021

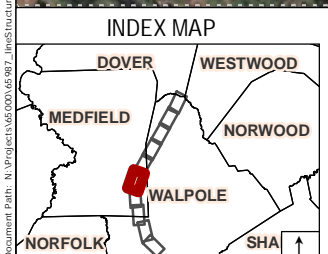
**CONFIDENTIAL**

**SWCA**  
 ENVIRONMENTAL CONSULTANTS

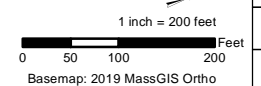
Document Path: N:\Projects\GIS\2021\456-522 Line Structure Replacement\Map\Walpole\2021\456-522 Line Structure Replacement\Map\Walpole\456-522 Line Structure Replacement.mxd  
 User: ermm\jacob.m...



THIS MAPPING PRODUCT HAS BEEN CREATED TO COMPLY WITH SUBMITTAL REQUIREMENTS TO OBTAIN CERTAIN REGULATORY APPROVALS AND, AS SUCH, THERE IS NO RELIANCE ON THE INFORMATION CONTAINED HEREIN FOR ANY OTHER PURPOSE.



Legend	
● Existing Structure	— Contour Line
● Proposed Structure	— Delineated Wetland Boundary
● Existing Structure to be Removed	— 100' Buffer to BVW/IVW
Ⓜ Gate	— Sediment Control Barrier
ⓧ Fence	— Existing Right-of-Way (ROW)
Ⓞ Stonewall	— Existing Access (all necessary rights in place)
— Eversource Line	— Roads
	— Railroad
	— Map Sheet Matchline
	— Temporary Construction Matting
	— Field Delineated Wetland
	— Approximate Wetland (not delineated)
	— Work Pad
	— Municipal Boundaries
	— Eversource Owned Property
	— Municipal Protected & Recreational Open Space
	— FEMA 100-Year Flood Zone
	— Areas of Moderate-High Archeological Sensitivity



NO.	DATE	REVISIONS

**EVERSOURCE ENERGY**

**2021 - 456 522 Line Structure Replacement Project Environmental Resources Map**

Walpole, Medfield, & Dover, MA

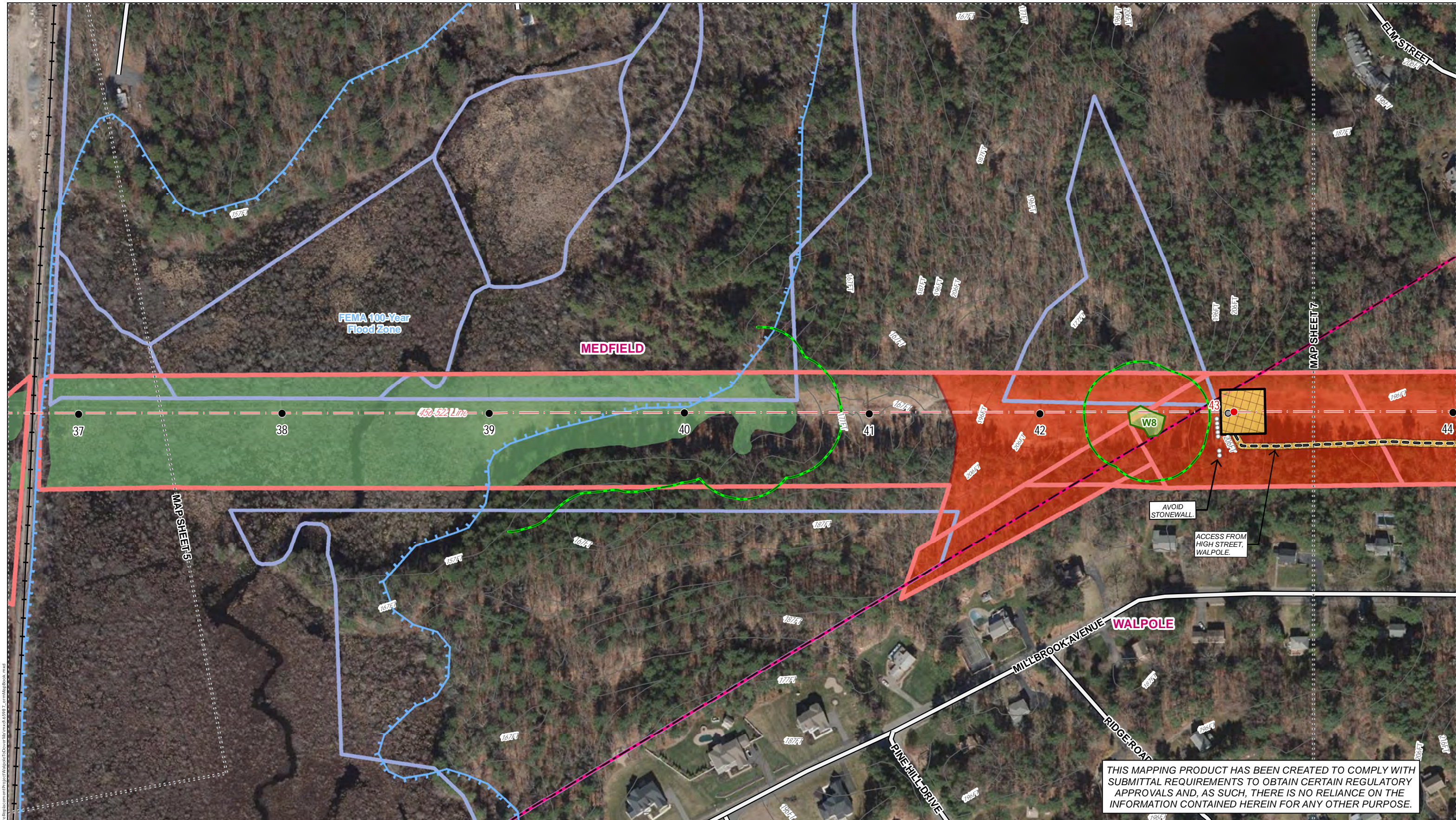
Date: July, 2021

**SWCA**  
ENVIRONMENTAL CONSULTANTS

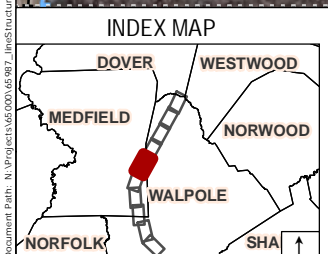
Map Sheet 5 of 10

**CONFIDENTIAL**



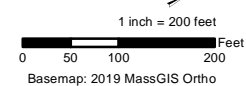


THIS MAPPING PRODUCT HAS BEEN CREATED TO COMPLY WITH SUBMITTAL REQUIREMENTS TO OBTAIN CERTAIN REGULATORY APPROVALS AND, AS SUCH, THERE IS NO RELIANCE ON THE INFORMATION CONTAINED HEREIN FOR ANY OTHER PURPOSE.



Legend	
● Existing Structure	— Eversource Line
● Proposed Structure	— Contour Line
● Existing Structure to be Removed	— Delineated Wetland Boundary
○ Stonewall	— Existing Right-of-Way (ROW)
— Existing Access (all necessary rights in place)	— 100' Buffer to BVW/IVW
— Roads	— Field Delineated Wetland
— Railroad	— Map Sheet Matchline
— Municipal Boundaries	— Temporary Construction Matting
— Municipal Protected & Recreational Open Space	— Work Pad
— Areas of Moderate-High Archeological Sensitivity	— Approximate Wetland (not delineated)
— FEMA 100-Year Flood Zone	— Eversource Owned Property

NO.	DATE	REVISIONS



**EVERSOURCE ENERGY**

**2021 - 456 522 Line Structure Replacement Project Environmental Resources Map**

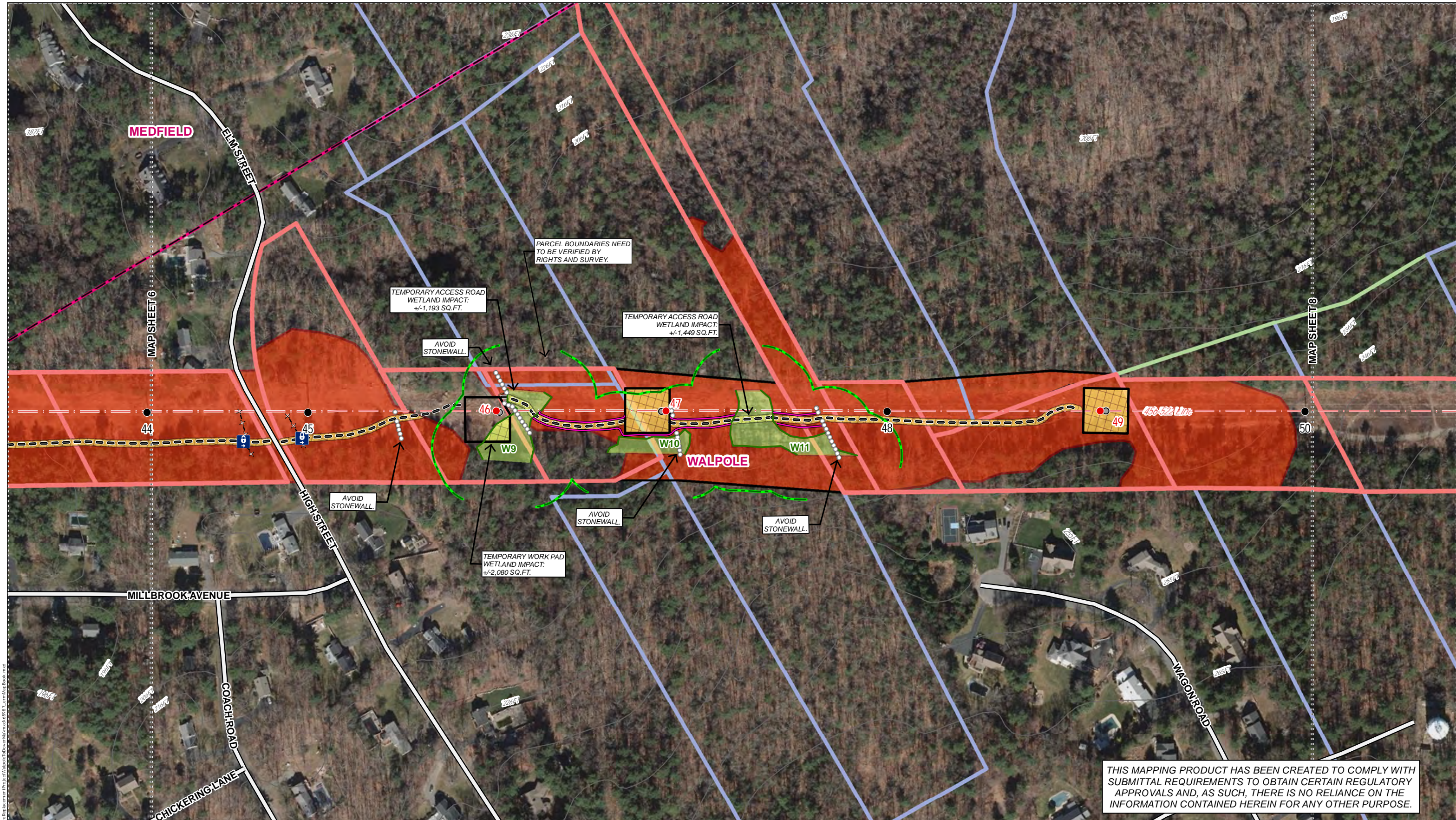
Walpole, Medfield, & Dover, MA      Map Sheet 6 of 10

Date: July, 2021

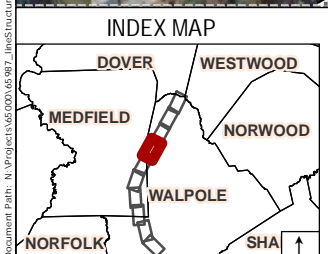
**CONFIDENTIAL**

**SWCA**  
ENVIRONMENTAL CONSULTANTS

Document Path: N:\Projects\65000\65000\_7 - 456-522 Line Structure Replacement\Project\Walpole\Drawings\456-522 Line Structure Replacement.mxd

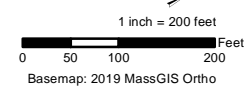


THIS MAPPING PRODUCT HAS BEEN CREATED TO COMPLY WITH SUBMITTAL REQUIREMENTS TO OBTAIN CERTAIN REGULATORY APPROVALS AND, AS SUCH, THERE IS NO RELIANCE ON THE INFORMATION CONTAINED HEREIN FOR ANY OTHER PURPOSE.



Legend	
● Existing Structure	--- Fence
● Proposed Structure	○○○ Stonewall
● Existing Structure to be Removed	--- Eversource Line
⊕ Gate	--- Contour Line
--- Delineated Wetland Boundary	--- 100' Buffer to BVW/IVW
--- Existing Right-of-Way (ROW)	--- Sediment Control Barrier
--- Existing Access (all necessary rights in place)	--- Work Pad
--- Roads	--- Municipal Boundaries
--- Map Sheet Matchline	--- Eversource Owned Property
--- Temporary Construction Matting	--- Private Protected & Recreational Open Space
--- Field Delineated Wetland	--- Municipal Protected & Recreational Open Space
--- Areas of Moderate-High Archeological Sensitivity	

NO.	DATE	REVISIONS



**EVSOURCE ENERGY**

**2021 - 456 522 Line Structure Replacement Project**

**Environmental Resources Map**

Walpole, Medfield, & Dover, MA

Date: July, 2021

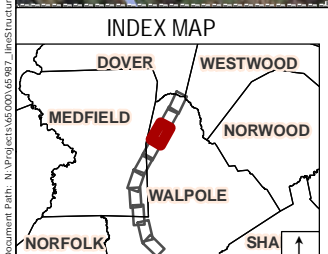
Map Sheet 7 of 10

**SWCA**  
ENVIRONMENTAL CONSULTANTS

**CONFIDENTIAL**

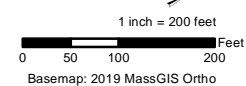


THIS MAPPING PRODUCT HAS BEEN CREATED TO COMPLY WITH SUBMITTAL REQUIREMENTS TO OBTAIN CERTAIN REGULATORY APPROVALS AND, AS SUCH, THERE IS NO RELIANCE ON THE INFORMATION CONTAINED HEREIN FOR ANY OTHER PURPOSE.



Legend	
● Existing Structure	— Delineated Wetland Boundary
● Proposed Structure	— 100' Buffer to BVW/IVW
○ Existing Structure to be Removed	— Sediment Control Barrier
○ Stonewall	— Existing Right-of-Way (ROW)
— Eversource Line	— Existing Access (all necessary rights in place)
— Contour Line	— Roads
	— Delineated Intermittent Watercourse
	— Map Sheet Matchline
	— Work Pad
	— Municipal Boundaries
	— Temporary Construction Matting
	— Delineated Open Water
	— Field Delineated Wetland
	— Municipal Protected & Recreational Open Space
	— Eversource Owned Property
	— Private Protected & Recreational Open Space
	— Municipal Protected & Recreational Open Space
	— Land Trust Protected & Recreational Open Space
	— Areas of Moderate-High Archeological Sensitivity

NO.	DATE	REVISIONS



**EVERSOURCE ENERGY**

**2021 - 456 522 Line Structure Replacement Project**  
**Environmental Resources Map**

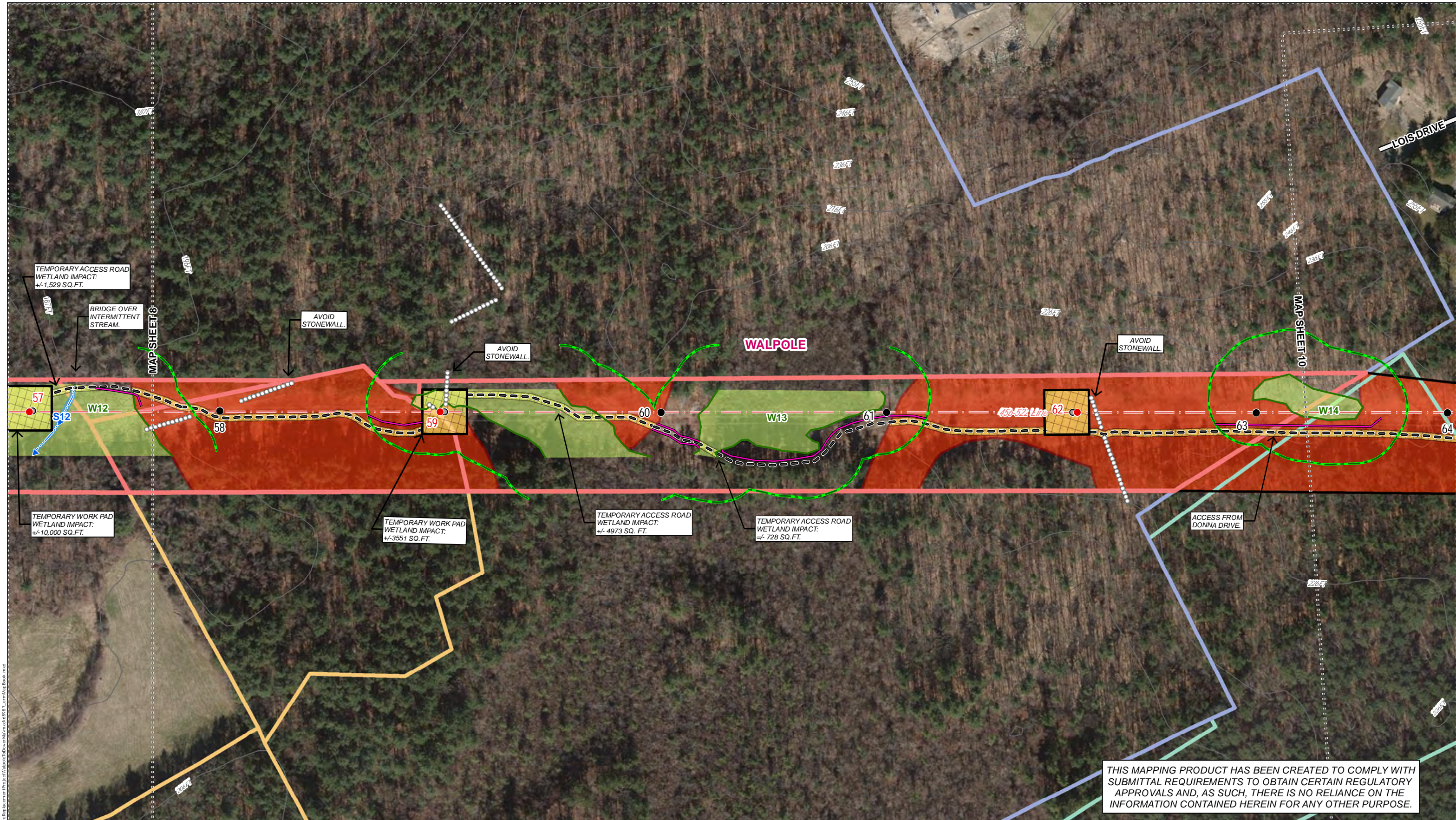
Walpole, Medfield, & Dover, MA

Date: July, 2021

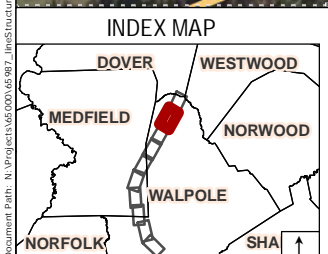
**CONFIDENTIAL**

Map Sheet 8 of 10

**SWCA**  
ENVIRONMENTAL CONSULTANTS

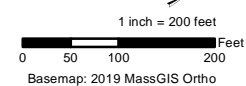


THIS MAPPING PRODUCT HAS BEEN CREATED TO COMPLY WITH SUBMITTAL REQUIREMENTS TO OBTAIN CERTAIN REGULATORY APPROVALS AND, AS SUCH, THERE IS NO RELIANCE ON THE INFORMATION CONTAINED HEREIN FOR ANY OTHER PURPOSE.



Legend	
● Existing Structure	— Delineated Wetland Boundary
● Proposed Structure	— 100' Buffer to BVW/IVW
● Existing Structure to be Removed	— Sediment Control Barrier
○ Stonewall	— Existing Right-of-Way (ROW)
— Eversource Line	— Contour Line
— Existing Access (all necessary rights in place)	— Existing Access (all necessary rights in place)
— Roads	— Delineated Intermittent Watercourse
— Map Sheet Matchline	— Municipal Boundaries
— Temporary Construction Matting	— Delineated Open Water
— Field Delineated Wetland	— Work Pad
— Eversource Owned Property	— Municipal Protected & Recreational Open Space
— County Protected & Recreational Open Space	— Land Trust Protected & Recreational Open Space
— Areas of Moderate-High Archeological Sensitivity	

NO.	DATE	REVISIONS

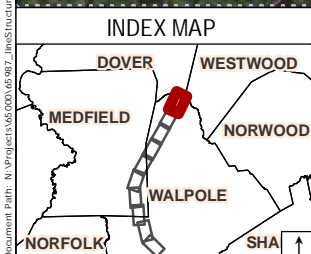


<b>EVERSOURCE ENERGY</b>	
<b>2021 - 456 522 Line Structure Replacement Project</b>	
<b>Environmental Resources Map</b>	
Walpole, Medfield, & Dover, MA	
Date: July, 2021	
<b>CONFIDENTIAL</b>	
<b>SWCA</b> ENVIRONMENTAL CONSULTANTS	

Document Path: N:\Projects\65000\65987 - 456-522 Line Structure Replacement\Project\Walpole\Drawings\456-522 Line Structure Replacement - 456-522 Line Structure Replacement.mxd

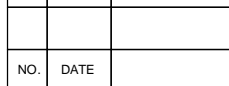


THIS MAPPING PRODUCT HAS BEEN CREATED TO COMPLY WITH SUBMITTAL REQUIREMENTS TO OBTAIN CERTAIN REGULATORY APPROVALS AND, AS SUCH, THERE IS NO RELIANCE ON THE INFORMATION CONTAINED HEREIN FOR ANY OTHER PURPOSE.



Legend	
● Existing Structure	— Eversource Line
■ SUB Substation	— Contour Line
⊕ Gate	— Delineated Wetland Boundary
×-× Fence	— Sediment Control Barrier
○ Stonewall	— Existing Right-of-Way (ROW)
— 100' Buffer to BVW/IWW	— Existing Access (all necessary rights in place)
— Field Delineated Wetland	— Roads
— Existing Right-of-Way (ROW)	— Map Sheet Matchline
— Temporary Construction Matting	— Municipal Boundaries
— Field Delineated Wetland	— Eversource Owned Property
— Municipal Boundaries	— County Protected & Recreational Open Space
— Municipal Protected & Recreational Open Space	— Municipal Protected & Recreational Open Space
— FEMA 100-Year Flood Zone	— Areas of Moderate-High Archeological Sensitivity

NO.	DATE	REVISIONS



**EVERSOURCE ENERGY**

**2021 - 456 522 Line Structure Replacement Project  
Environmental Resources Map**

Walpole, Medfield, & Dover, MA

Date: July, 2021

**CONFIDENTIAL**

**SWCA**  
ENVIRONMENTAL CONSULTANTS

Map Sheet 10 of 10

Document Path: N:\Projects\GIS\001\0587 - 456-522 Line Structure Replacement\0587 - 456-522 Line Structure Replacement\0587 - 456-522 Line Structure Replacement.mxd