

Fire - Walpole MA HPS100

	feet
Width	: 8.33
Track	: 8.33
Lock to Lock Time	: 6.0
Steering Angle	: 37.0

VEHICLE PROFILE

N.T.S.

BOHLER
 SITE CIVIL AND CONSULTING ENGINEERING
 PROGRAM MANAGEMENT
 LANDSCAPE ARCHITECTURE
 SUSTAINABLE DESIGN
 PERMITTING SERVICES
 TRANSPORTATION SERVICES

REVISIONS

REV	DATE	COMMENT	DRAWN BY	CHECKED BY
1	08/30/2023		CMC	EDJAK

811
 Know what's below.
 Call before you dig.
 ALWAYS CALL 811
 It's fast. It's free. It's the law.

FOR ENTITLEMENT PURPOSES ONLY

THIS DRAWING IS INTENDED FOR MUNICIPAL AND/OR AGENCY REVIEW AND APPROVAL. IT IS NOT INTENDED AS A CONSTRUCTION DOCUMENT UNLESS INDICATED OTHERWISE.

PROJECT No.: W211263
 DRAWN BY: CMC/LC
 CHECKED BY: EDJAK
 DATE: 05/31/2023
 CAD ID: W211263-SPPD-2BB DWG

PROJECT:
PRELIMINARY CIVIL ENGINEERING PLAN SET
 FOR

KIG SILVERSTRAND WALPOLE, LLC
 PROPOSED MULTI-FAMILY DEVELOPMENT
 MAP 25, BLOCK 164, 165 & 166
 981, 989 & 1015 EAST STREET
 TOWN OF WALPOLE
 NORFOLK COUNTY,
 MASSACHUSETTS

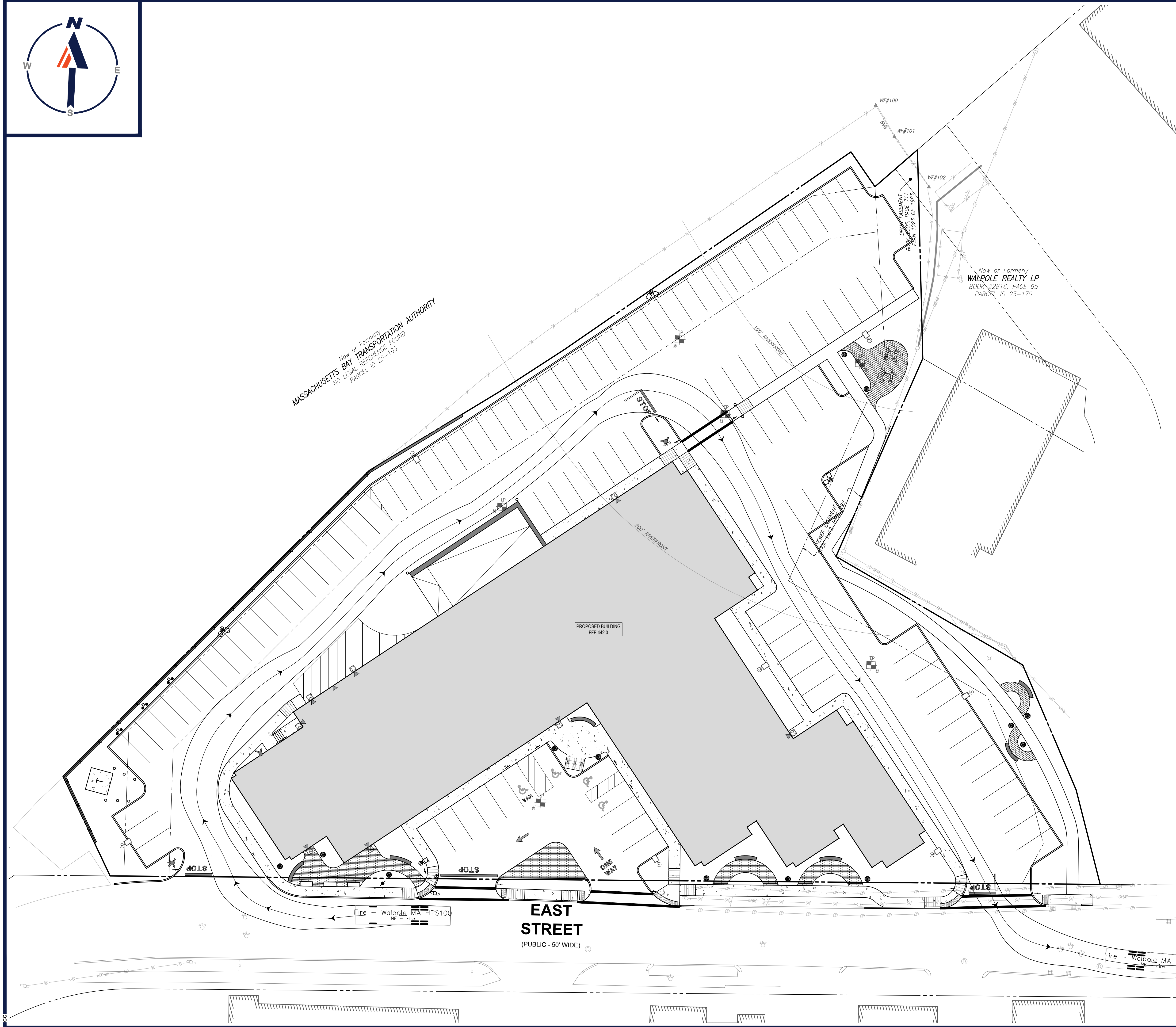
BOHLER
 352 TURNPIKE ROAD
 SOUTHBOROUGH, MA 01772
 Phone: (508) 480-9900
www.BohlerEngineering.com

J.A. KUCICH
 PROFESSIONAL ENGINEER
 MASSACHUSETTS LICENSE No. 41530
 NEW HAMPSHIRE LICENSE No. 15476
 CONNECTICUT LICENSE No. 26177
 RHODE ISLAND LICENSE No. 3616
 MAINE LICENSE No. 12553

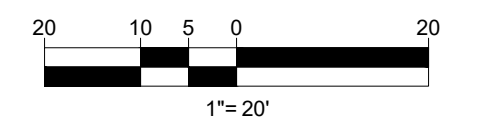
SHEET TITLE:
FIRE TRUCK TURN EXHIBIT

SHEET NUMBER:
01

REVISION 1 - 08/30/2023



THIS PLAN TO BE UTILIZED FOR CONCEPTUAL PURPOSES ONLY



P:\11\21183\CADD\DRAWINGS\PLAN SET\CIVIL SITE PLAN\21183-SPPD-2BB.dwg - LAYOUT: FIRE TRUCK EXHIBIT