



**HOWARD STEIN HUDSON**  
 114 Turnpike Road, Suite 2C  
 Chelmsford, MA 01824  
 www.hshassoc.com

PREPARED FOR:

55 BH LLC  
 6 LYBERRY WAY, SUITE 203  
 WESTFORD, MA 01886

**PROPOSED MULTIFAMILY  
 DEVELOPMENT  
 SUMMER STREET  
 WALPOLE, MA**

REVISIONS:

NO	BY	DATE	DESCRIPTION
1	PB	9/14/20	REV. MULTIFAMILY

**SITE  
 PLAN**

**PROPOSED  
 SUBDIVISION /  
 OVERALL PLAN**

DATE: JANUARY 10, 2020

PROJECT NUMBER: 19097

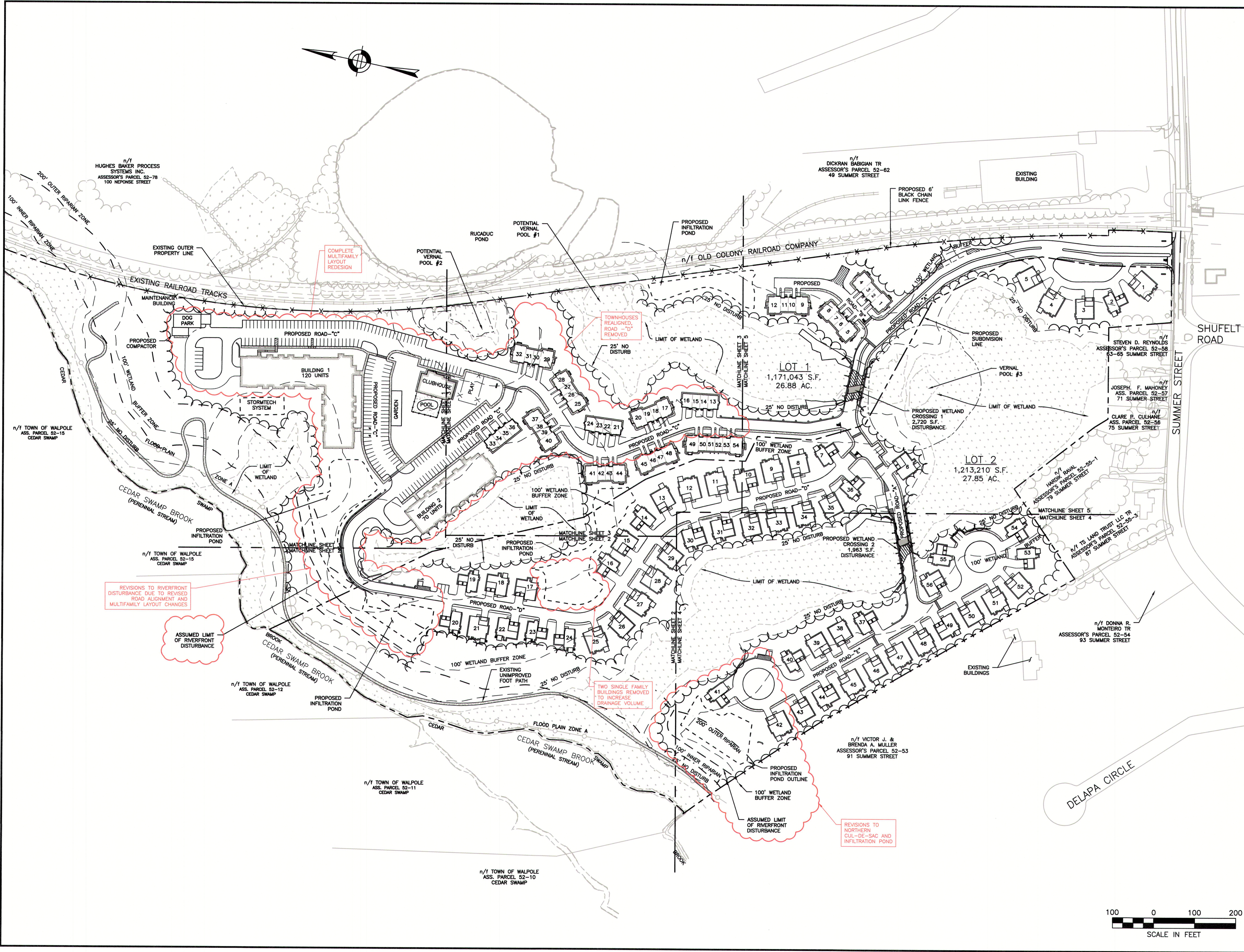
DESIGNED BY: PB/KE/KF

DRAWN BY: PB/KF

CHECKED BY: KE

C.10

SHEET 10 OF 88



9/11/2020 M:\19097\CURRENT\REVISED MULTIFAMILY CONCEPT LAYOUT\19097 - site prep-overall-open-space.dwg  
 Patrick Bogle

