



November 6, 2020

Mr. David J. Hale
Omni Properties LLC
6 Lyberty Way, Suite 203
Westford, MA 01886

**RE: PROPOSED CEDAR CROSSING AND CEDAR EDGE RESIDENTIAL DEVELOPMENT
RESPONSE TO TOWN ENGINEER'S NOVEMBER 2, 2020 MEMORANDUM
55 SUMMER STREET, WALPOLE, MA**

Dear David:

This letter has been prepared to respond to comments raised by Carl J. Balduf, Walpole Town Engineer in his memorandum dated November 2, 2020. Mr. Balduf's comments are in italics below, followed by our response.

- 1. The memorandum should have included a graphic showing the exact location of the intersections as well as a graphic identifying the volume of movements at each intersection with time of observation (am peak, pm peak etc.).*

Response: The information for the Traffic Signal Warrant Analysis (TSWS) memorandum (dated October 16, 2020) was obtained from the Traffic Impact and Access Study (TIAS) prepared for the Cedar Crossing and Cedar Edge development (dated January 6, 2020). Attached to this letter are two figures, Figure 1 and Figure 2 which show the project study area (Figure 1) and an aerial view of the triangle intersections (Figure 2).

Also attached are the 2019 Existing weekday morning and weekday evening peak hour traffic flow networks are shown graphically on Figures 2 and 3, respectively (from the TIAS). These volumes were used for the existing conditions analysis in the TSWS.

Also attached are the anticipated 2026 Build weekday morning and weekday evening peak-hour traffic volumes (Figures 9 and 10 from the TIAS) which were used for the future build conditions in the TSWS.

- 2. The memorandum should identify the source of the traffic counts and the date which they were taken. The concern is that counts taken recently may not reflect "the norm".*

Response: Peak-period turning movement counts were originally conducted on Wednesday, September 11, 2019 during the weekday morning and evening peak

Mr. David J. Hale
November 6, 2020
Page 2

periods (7:00 to 9:00 AM and 4:00 to 6:30 PM). Additional counts were performed at the triangle intersections on Wednesday November 6, 2019.

All traffic counts were performed pre-COVID 19.

If you have any questions, feel free to give me a call.

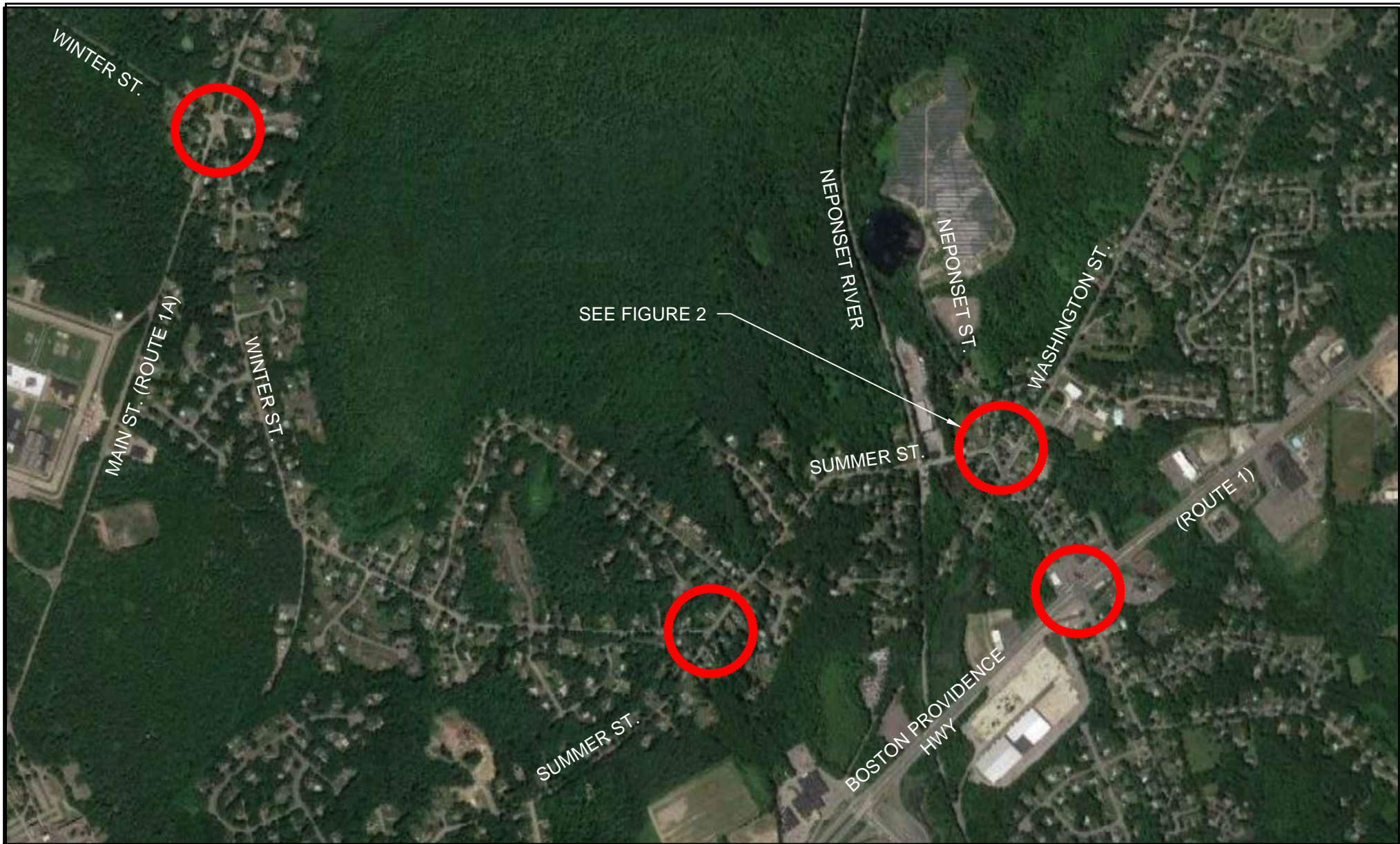
Sincerely,

BAYSIDE ENGINEERING, INC.

A handwritten signature in black ink, appearing to read 'K. Cram', followed by a long horizontal line extending to the right.

Kenneth P. Cram, P.E.
Director, Traffic Engineering

Q:\PROJECTS\19 PROJECTS\2192658 - OMNI DEVELOPMENT RESIDENTIAL, WALPOLE\ACAD\2192658\DWG\4 INTERSECTIONS 11/6/2020



Not To Scale



600 Unicorn Park Drive ▲ Woburn, MA 01801

Phone: 781.932.3201 ▲ Fax: 781.932.3413

www.baysideengineering.com

Cedar Crossing and Cedar Edge
Walpole, MA

Figure 1

Study Area

11/2020

NEPONSET ST.

SUMMER ST.

NEPONSET ST.

WASHINGTON ST.

WATER ST.



Not To Scale



600 Unicorn Park Drive ▲ Woburn, MA 01801

Phone: 781.932.3201 ▲ Fax: 781.932.3413

www.baysideengineering.com

Cedar Crossing and Cedar Edge
Walpole, MA

Figure 2

Triangle Intersections

