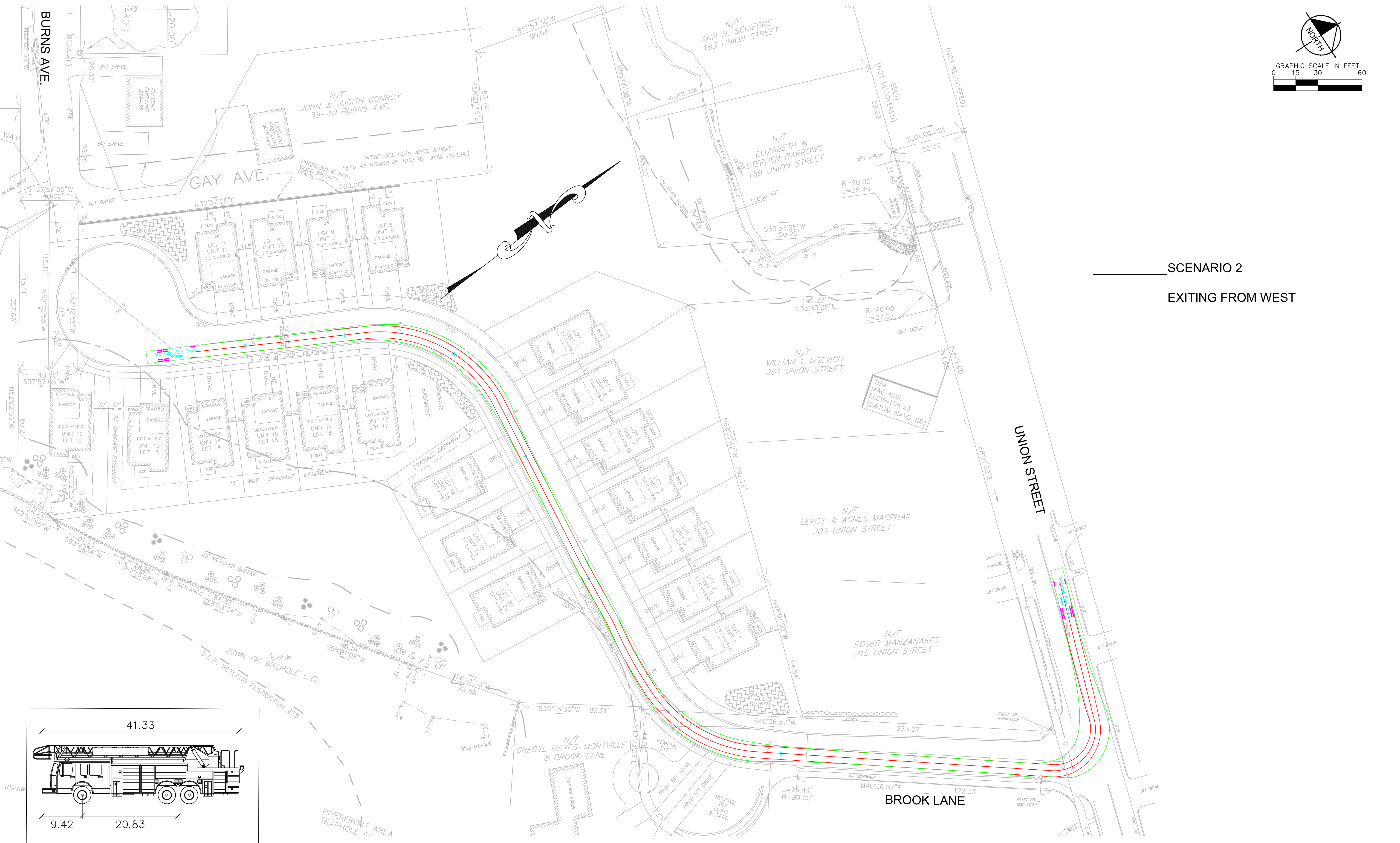
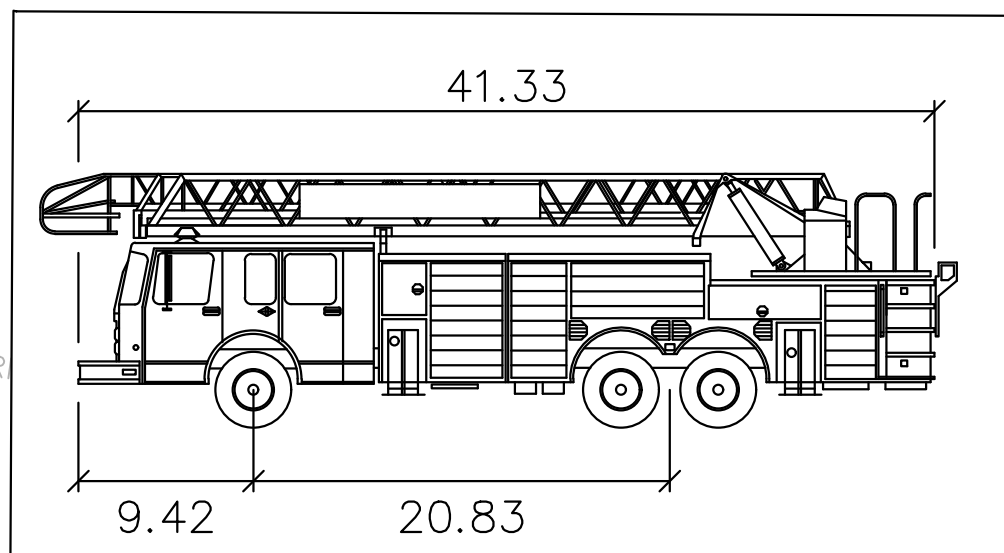


Plotted By: Poudel, Samiksha, Sheet: Sct-Kha, Layout: Autoturn 4, January 23, 2023 05:52:30pm, K:\BOS_TPT\112614000_Walpole_Village at Burns\CAD\PlanSheets\Autoturn_Singles_Exit_Union_St.dwg
 This document, together with the concepts and designs presented herein, is an instrument of service, is intended only for the specific purpose and client for which it was prepared. Return of and improper reliance on this document without written authorization and adaptation by Kimley-Horn and Associates, Inc. shall be without liability to Kimley-Horn and Associates, Inc.



SCENARIO 2
EXITING FROM WEST



Walpole Fire Truck

	feet
Width	: 8.33
Track	: 8.33
Lock to Lock Time	: 6.0
Steering Angle	: 42.0

TURNING MOMENTS LEGEND:

- TIRE LINES
- FRONT BUMPER LINES

REFERENCE:
GLM Engineering Consultants, Inc.
 AMENDED SITE DEVELOPMENT PLAN
 A COMPREHENSIVE PERMIT M.G.L.c. 40B

	<p>AUTOTURN FIRE TRUCK PATH BROOK LANE TO UNION ST</p>
© 2022 KIMLEY-HORN AND ASSOCIATES, INC. 404 WYMAN STREET, SUITE 385, WALTHAM, MA 02451 PHONE: 781-328-8576 WWW.KIMLEY-HORN.COM	KHA PROJECT: 112614000 DATE: 02/28/2022 SCALE: AS SHOWN DESIGNED BY: SP DRAWN BY: BS CHECKED BY: BS
THE RESIDENCES AT BURNS AVENUE PREPARED FOR WALLSTREET DEVELOPMENT CORP. P.O. BOX 272 WESTWOOD, MA 02090 MASSACHUSETTS	SHEET NUMBER 2
REVISIONS No. DATE BY	DATE BY