

Do not prune tree's leader. No pruning / cutting of the tree shall be done unless directed by the landscape architect.

Cut and remove burlap, rope and / or ties, etc., from trunk and branches of tree.

Tree shall bear same relation to finish grade as it did to previous grade. Remove extra soil from trunk flare and top of rootball.

Set tree plumb on firm soil. Maintain same relationship to finish grade after planting, as it did at the nursery (trunk flare to be 2-3" above finished grade).

Cut and remove burlap from top 1/3 of root ball. If plastic wrap, remove entirely. If the root ball is encased in a wire basket, remove top 1/2.

Finish grade - See plan for material.

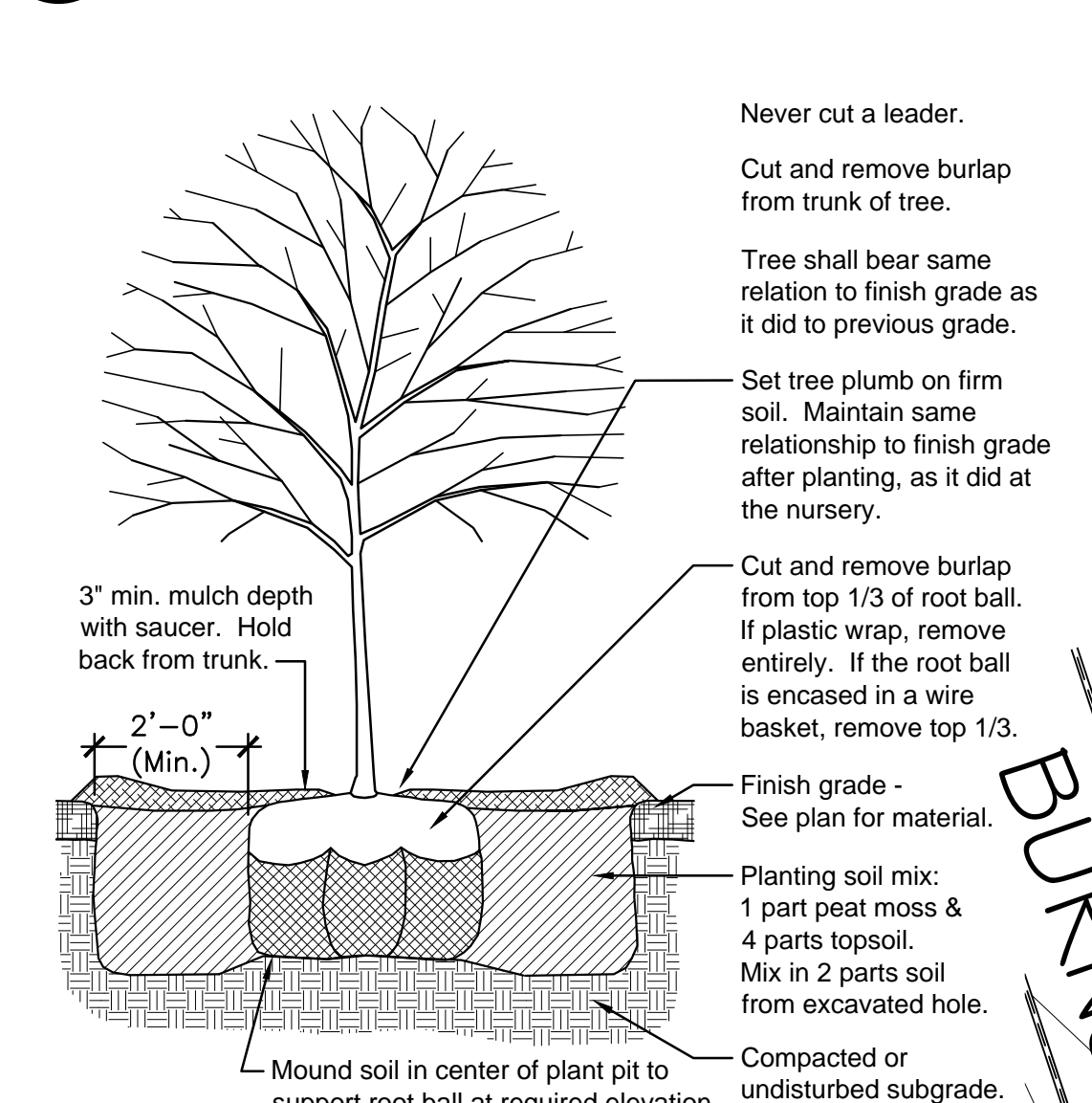
Planting soil mix: 1 part peat moss & 4 parts topsoil. Mix in 2 parts soil from excavated hole.

Compacted or undisturbed subgrade.

Mound soil in center of plant pit to support root ball at required elevation.

NOTES:
1. Flood saucer twice during the first 24-hours after planting.
2. Soak each tree twice weekly, for (3) weeks after fall planting.
3. Soak each tree twice weekly, during spring and summer planting.

1 TYP. EVERGREEN TREE PLANTING
Scale: 1/2" = 1' - 0"



Never cut a leader.

Cut and remove burlap from trunk of tree.

Tree shall bear same relation to finish grade as it did to previous grade.

Set tree plumb on firm soil. Maintain same relationship to finish grade after planting, as it did at the nursery.

Cut and remove burlap from top 1/3 of root ball. If plastic wrap, remove entirely. If the root ball is encased in a wire basket, remove top 1/3.

Finish grade - See plan for material.

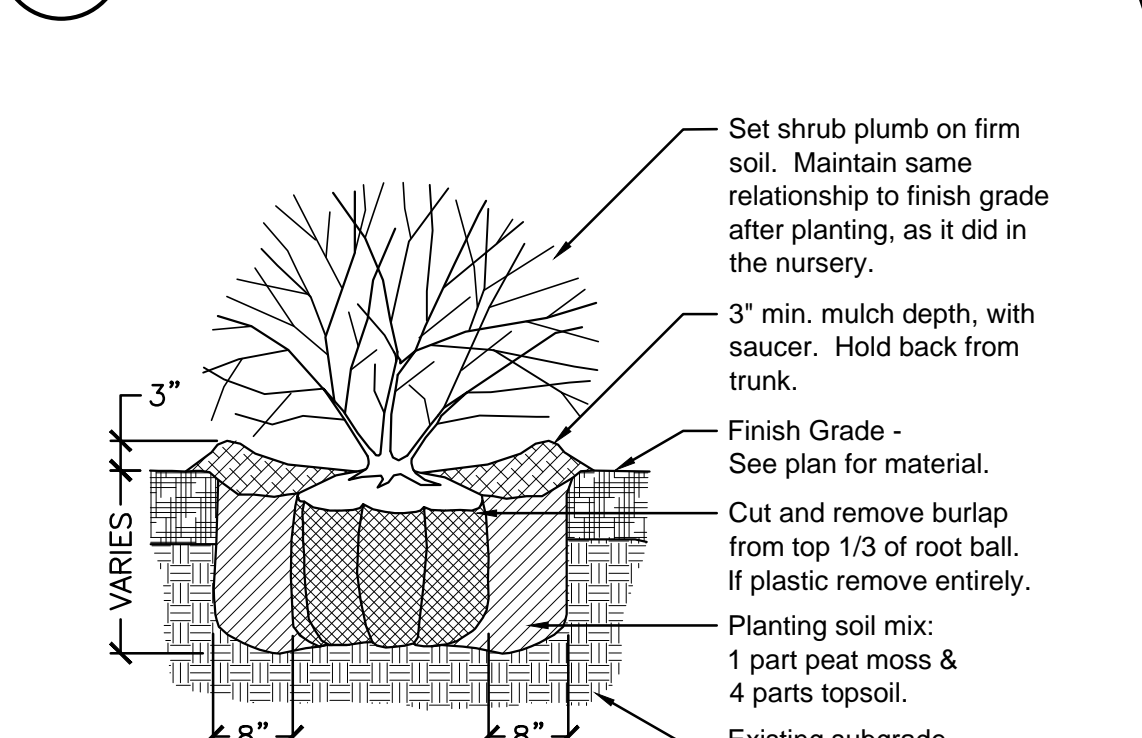
Planting soil mix: 1 part peat moss & 4 parts topsoil. Mix in 2 parts soil from excavated hole.

Compacted or undisturbed subgrade.

Mound soil in center of plant pit to support root ball at required elevation.

NOTES:
1. Soak each tree twice weekly, for (3) weeks after fall planting.
2. Soak each tree twice weekly, during spring and summer planting.
3. Contractor to provide a price for staking of each individual tree.

2 TYP. DECIDUOUS TREE PLANTING
Scale: 1/2" = 1' - 0"



Set shrub plumb on firm soil. Maintain same relationship to finish grade after planting, as it did in the nursery.

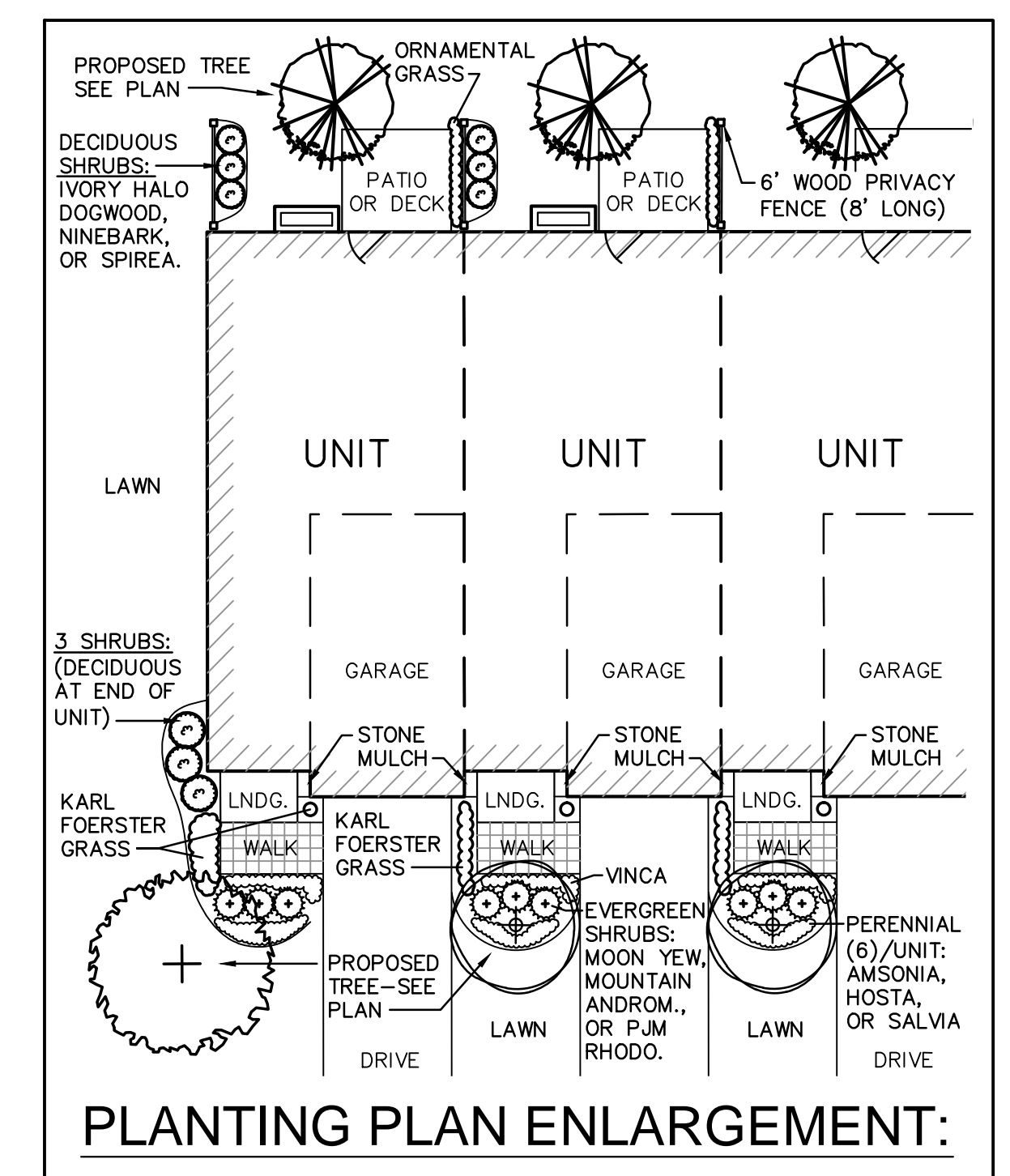
Cut and remove burlap from top 1/3 of root ball. If plastic wrap, remove entirely.

Planting soil mix: 1 part peat moss & 4 parts topsoil.

Existing subgrade.

NOTES:
1. New shrub beds to have a minimum of one foot planting soil.
2. Shrubs to be full and bushy.

3 TYPICAL SHRUB PLANTING
Scale: 3/4" = 1' - 0"



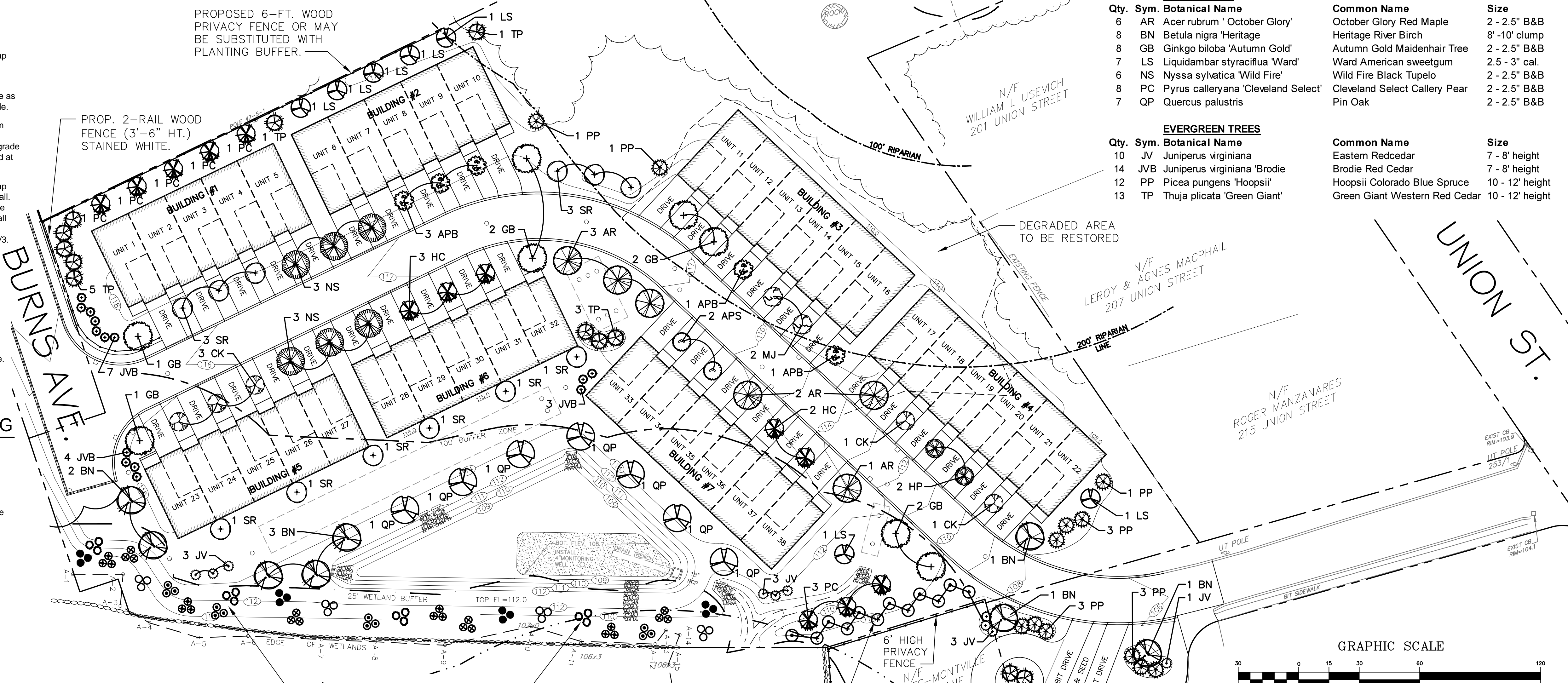
PLANTING PLAN ENLARGEMENT:

PLANTING NOTES:

- Trees and shrubs shall be uniform, full and bushy, and well branched specimen plants. All plants to be approved by the Landscape Architect.
- Plants shall be balled and burlapped or container grown.
- Plants to conform to the requirements established in 'American Standards For Nursery Stock', latest edition.
- Plant beds to receive 3-inch minimum depth of shredded bark mulch. Contractor to submit bark samples for approval.
- Plant materials shall be guaranteed for 1-year after installation.
- Plant materials shall be field located and approved by the Landscape Architect.
- Plant beds at perennials to have a 6-in. min. depth of loam. Loam at trees, shrubs, and ornamental grass locations to be depth of root ball.
- Loam (6" minimum depth) and seed all lawn areas and disturbed areas not noted to receive other treatment.
- Plant substitutions will be allowed based on best availability of nursery stock, with all substitutions to be approved by Landscape Architect.

PLANT LIST:

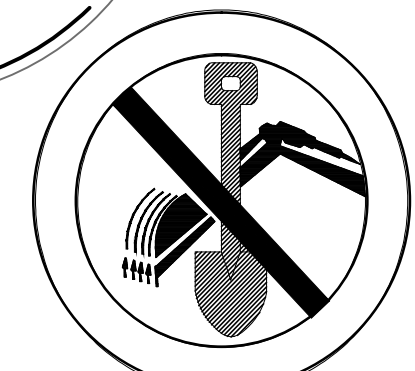
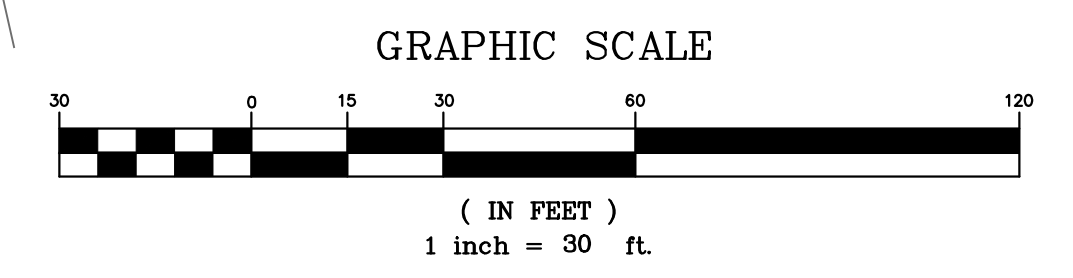
SMALL - ORNAMENTAL TREES				
Qty.	Sym.	Botanical Name	Common Name	Size
5	APB	Acer palmatum 'Bloodgood'	Bloodgood Japanese Maple	2" caliper
2	APS	Acer palmatum 'Sango kaku'	Coral Bark Japanese Maple	2" caliper
5	CK	Cornus kousa	Chinese Dogwood	6 - 7' ht.
5	HC	Halesia carolina	Silverbell	6" caliper
2	HP	Hydrangea pan. Tardiva- tree form	Tardiva Hydrangea Tree	15 gallon
2	MJ	Magnolia 'Jane'	Jane Magnolia	6' height
12	SR	Syringa reticulata 'Ivory Silk'	Ivory Silk Tree Lilac	2" caliper
SHADE TREES				
Qty.	Sym.	Botanical Name	Common Name	Size
6	AR	Acer rubrum 'October Glory'	October Glory Red Maple	2 - 2.5" B&B
8	BN	Betula nigra 'Heritage'	Heritage River Birch	8' - 10' clump
8	GB	Ginkgo biloba 'Autumn Gold'	Autumn Gold Maidenhair Tree	2 - 2.5" B&B
7	LS	Liquidambar styraciflua 'Ward'	Ward American sweetgum	2.5 - 3" cal.
6	NS	Nyssa sylvatica 'Wild Fire'	Wild Fire Black Tupelo	2 - 2.5" B&B
8	PC	Pyrus calleryana 'Cleveland Select'	Cleveland Select Callery Pear	2 - 2.5" B&B
7	QP	Quercus palustris	Pin Oak	2 - 2.5" B&B
EVERGREEN TREES				
Qty.	Sym.	Botanical Name	Common Name	Size
10	JV	Juniperus virginiana	Eastern Redcedar	7 - 8' height
14	JVB	Juniperus virginiana 'Brodie'	Brodie Red Cedar	7 - 8' height
12	PP	Picea pungens 'Hoopsii'	Hoopsii Colorado Blue Spruce	10 - 12' height
13	TP	Thuja plicata 'Green Giant'	Green Giant Western Red Cedar	10 - 12' height



PLANTING LEGEND:

- - Highbush Blueberry *Vaccinium corymbosum*
- - Witchhazel *Hamamelis virginiana*
- ⊙ - Hazelnut *Corylus americana*
- - Maple-leaved Viburnum *Viburnum acerifolium*
- ⊙ - Flowering Dogwood *Cornus florida*
- - Serviceberry *Amelanchier canadensis*

PROPOSED SCREENING/PLANTING BUFFER PLANTS:
6'-8' Hgt. White Pines (*Pinus strobus*)
6'-8' Hgt. Norway Spruce (*Picea abies*)
Plant 2 Rows staggered at 10' O.C.



Call DIGSAFE, 1-888-344-7233, for location and marking of all utilities prior to any excavation. Private utilities may require additional marking and investigation.



RESTORATION AND TREE & SHRUB PLANTING DETAILS

COSMOS ASSOCIATES SHALL NOT BE RESPONSIBLE FOR CONSTRUCTION MEANS, METHODS, TECHNIQUES, OR PROCEDURES UTILIZED BY THE CONTRACTOR NOR FOR THE SAFETY OF PUBLIC OR CONTRACTOR'S EMPLOYEES, OR FOR THE FAILURE OF THE CONTRACTOR TO CARRY OUT THE WORKING ACCORDANCE WITH THE CONTRACT DOCUMENTS.

COPYRIGHT (C) by COSMOS ASSOCIATES
All Rights Reserved

NO PART OF THIS DOCUMENT MAY BE REPRODUCED, STORED IN A RETRIEVAL SYSTEM, OR TRANSMITTED IN ANY FORM OR BY ANY MEANS, ELECTRONIC, MECHANICAL, PHOTOCOPYING, RECORDING OR OTHERWISE, WITHOUT THE PRIOR WRITTEN PERMISSION OF COSMOS ASSOCIATES. ANY MODIFICATIONS TO THIS DOCUMENT WITHOUT THE WRITTEN PERMISSION OF COSMOS ASSOCIATES SHALL RENDER IT INVALID AND UNUSABLE.

REVISIONS		DESCRIPTION
No.	DATE	
1	05/21/20	DRAINAGE SYSTEM
2	10/22/20	CONSERVATION COMMENTS
3	02/01/21	REVISED PLANTING PER NEW BASE
4	02/25/22	REVISED PLANTING PER NEW BASE

AMENDED SITE DEVELOPMENT PLAN
A COMPREHENSIVE PERMIT M.G.L.C. 40B
"THE RESIDENCES AT BURNS AVENUE"
WALPOLE, MASSACHUSETTS

APPLICANT:
WALL STREET DEVELOPMENT CORP.
P.O. BOX 272
WESTWOOD, MA 02090

Cosmos Associates
Landscape Architects & Site Planners
5 Longview Street
Natick, MA 01760
p: 508.654.6847
www.cosmosassociates.com

DESIGNED BY: SGC
DRAWN BY: REC
DATE: NOV. 23, 2020
SCALE: 1" = 30'
SHEET: 1 of 1
PLAN #: 27,096