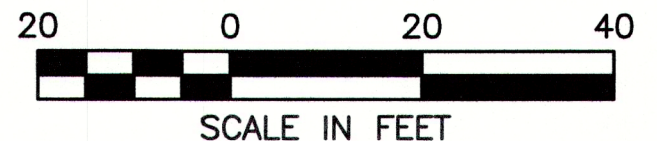
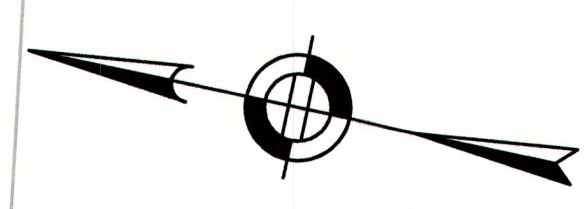
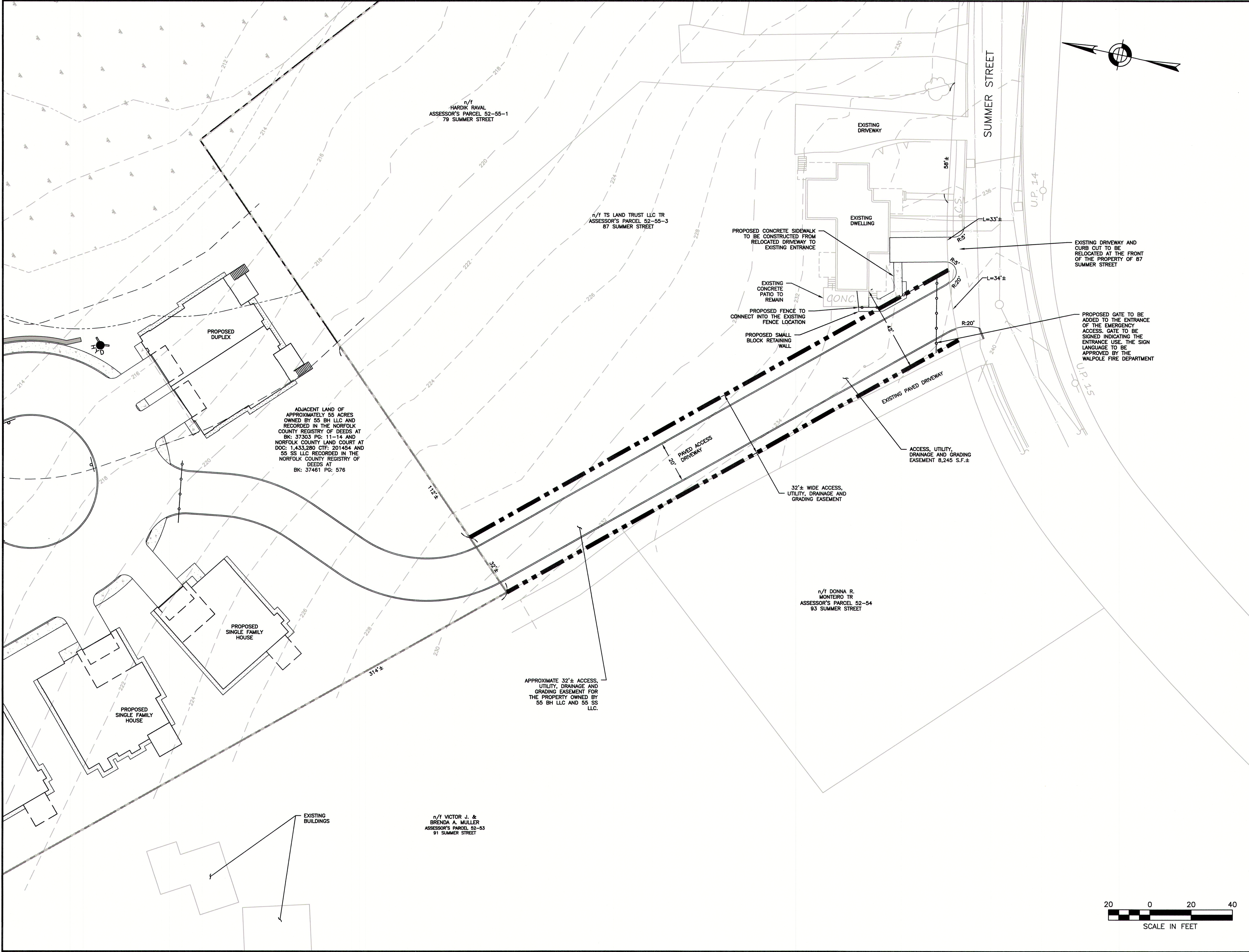


2/2/2021 L:\19097\CURRENT\19097 - Access Easement SK.dwg  
Patrick Boyle



**HOWARD STEIN HUDSON**  
114 Turnpike Road, Suite 2C  
Chelmsford, MA 01824  
www.hshassoc.com

**PREPARED FOR:**  
55 BH LLC  
6 LYBERTY WAY, SUITE 203  
WESTFORD, MA 01886

**PROPOSED MULTIFAMILY  
DEVELOPMENT  
SUMMER STREET  
WALPOLE, MA**

REVISIONS:			
NO	BY	DATE	DESCRIPTION
0	PB	11/30/20	ISSUED FOR REVIEW
1	PB	12/29/20	DETAILED EASEMENT SK
2	PB	2/2/21	REV. EASEMENT SK



**EASEMENT SKETCH  
PLAN**

**UTILITY AND  
EMERGENCY ACCESS  
EASEMENT AREA**

DATE:	NOVEMBER 30, 2020
PROJECT NUMBER:	19097
DESIGNED BY:	PB
DRAWN BY:	PB
CHECKED BY:	KE
	C.1