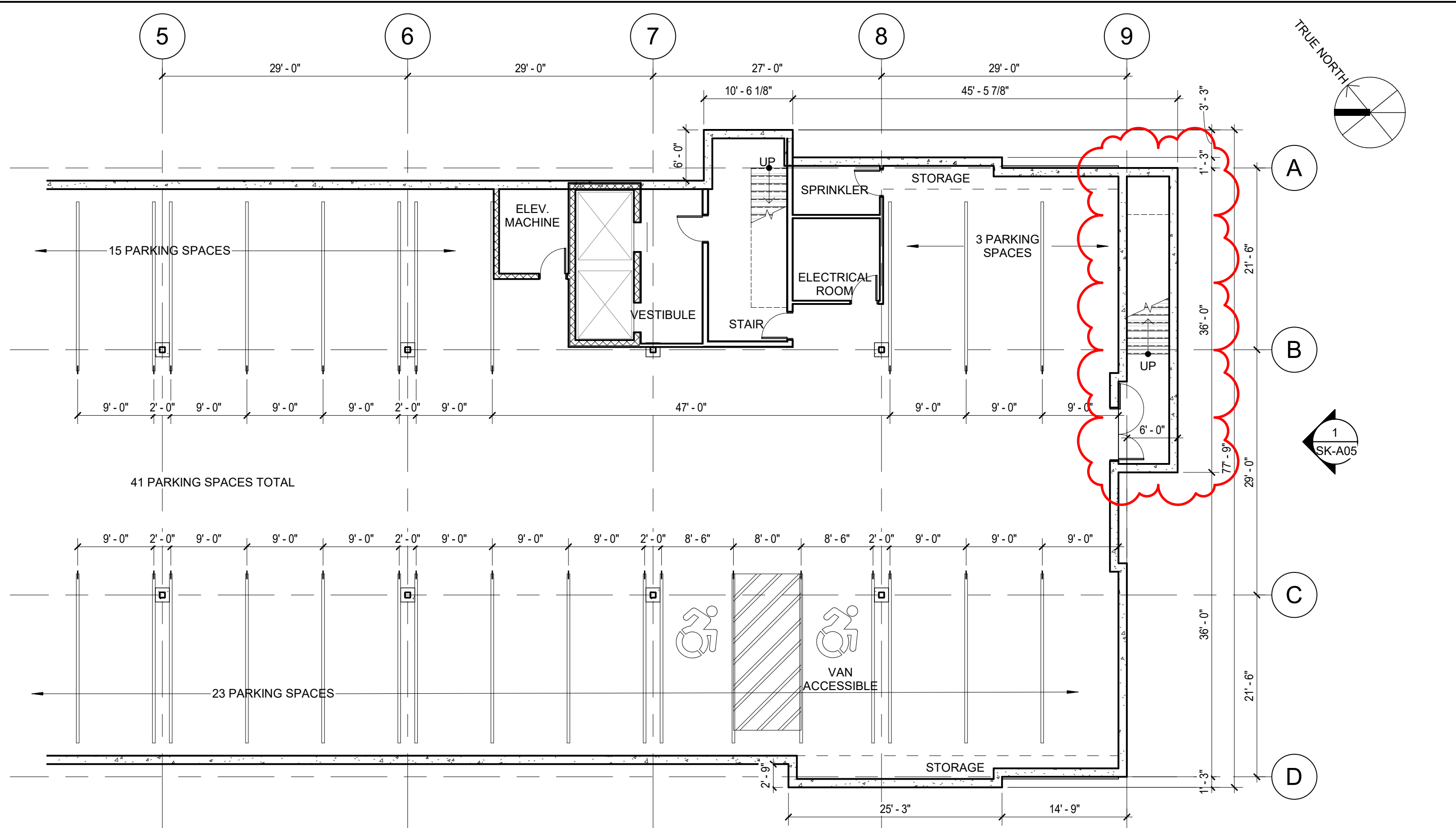


Files Location: C:\Users\jaldwin\Documents\Walpole Housing - Omni - Multi-Family\_Linear\_jaldwinF553S.rvt  
Date: 1/7/2021 3:15:09 PM



# PARTIAL GARAGE FLOOR PLAN

SCALE: 3/32" = 1'-0"

1

MAUGEL ARCHITECTS

200 Ayer Road  
www.maugel.com

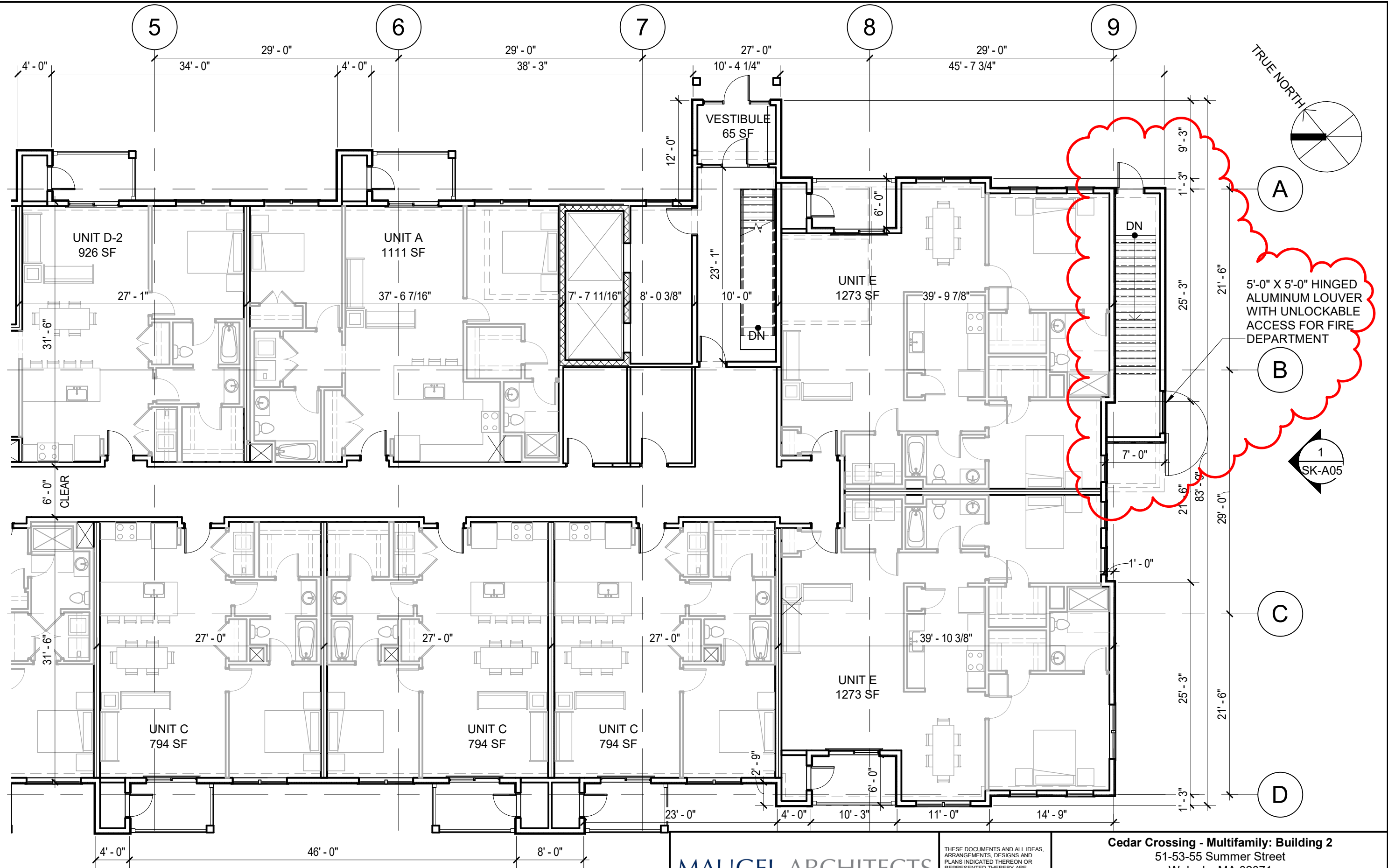
Boston | Harvard  
978.456.2800

THESE DOCUMENTS AND ALL IDEAS, ARRANGEMENTS, DESIGNS AND PLANS INDICATED THEREON OR REPRESENTED THEREBY ARE OWNED BY AND REMAIN THE PROPERTY OF MAUGEL ARCHITECTS, INC. AND NO PART THEREOF SHALL BE UTILIZED BY ANY PERSON, FIRM OR CORPORATION FOR ANY PURPOSE WHATSOEVER EXCEPT WITH SPECIFIC WRITTEN PERMISSION © 2013 MAUGEL ARCHITECTS, INC.

Cedar Crossing - Multifamily: Building 2  
51-53-55 Summer Street  
Walpole, MA 02071

Regarding: Emergency Egress/Fire Access		
Ref Drawing: A.100	Job Number: 19103	SK Number: SK-A01
Date: 1/7/2021	Scale: 3/32" = 1'-0"	

Files Location: C:\Users\jaldwin\Documents\Walpole Housing - Omni - Multi-Family\_Linear\_jaldwinF553S.rvt  
Date: 1/7/2021 3:15:10 PM



# PARTIAL FIRST FLOOR PLAN

SCALE: 3/32" = 1'-0"

1

MAUGEL ARCHITECTS

200 Ayer Road  
www.maugel.com

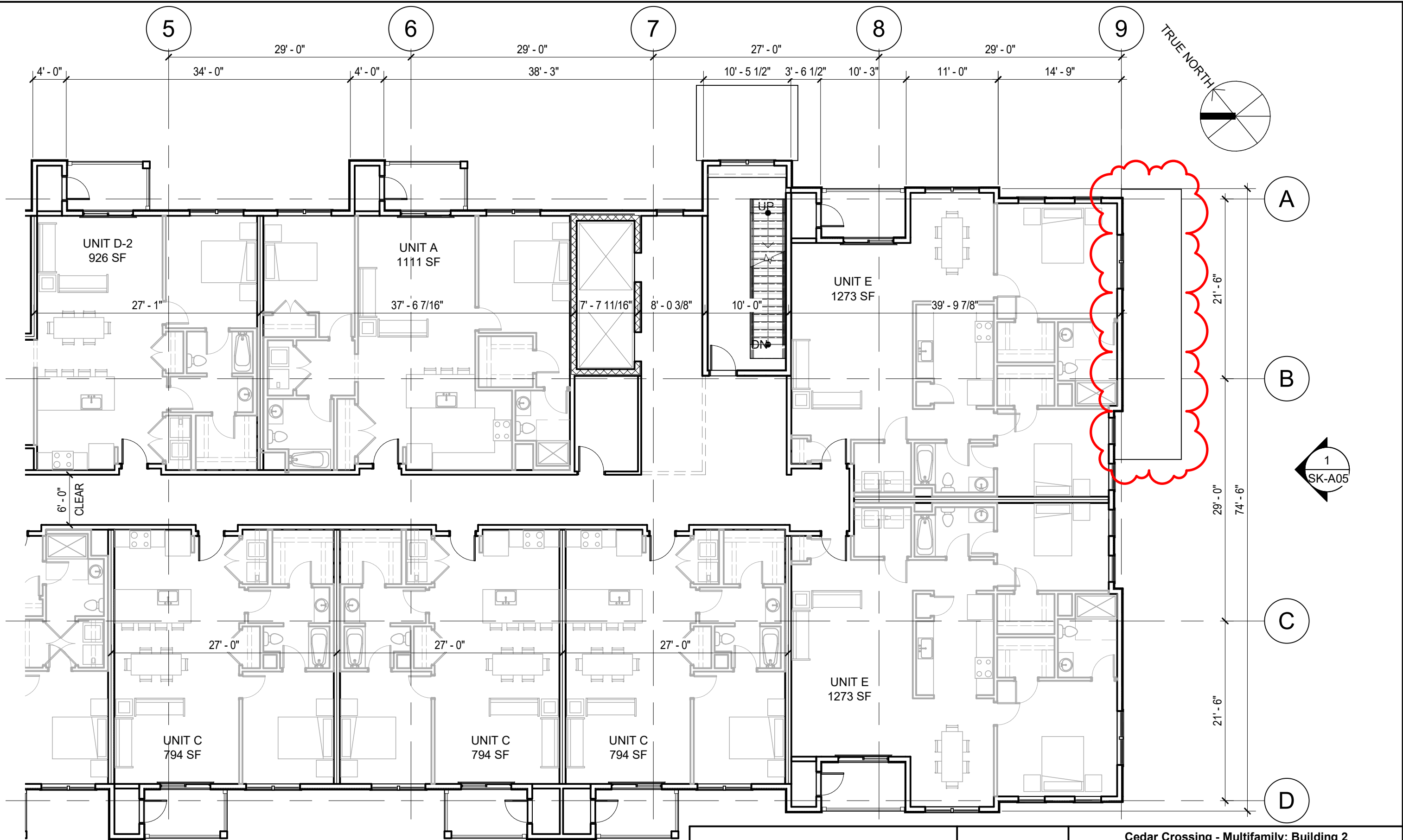
Boston | Harvard  
978.456.2800

THESE DOCUMENTS AND ALL IDEAS, ARRANGEMENTS, DESIGNS AND PLANS INDICATED THEREON OR REPRESENTED THEREBY ARE OWNED BY AND REMAIN THE PROPERTY OF MAUGEL ARCHITECTS, INC. AND NO PART THEREOF SHALL BE UTILIZED BY ANY PERSON, FIRM OR CORPORATION FOR ANY PURPOSE WHATSOEVER EXCEPT WITH SPECIFIC WRITTEN PERMISSION © 2013 MAUGEL ARCHITECTS, INC.

Cedar Crossing - Multifamily: Building 2  
51-53-55 Summer Street  
Walpole, MA 02071

Regarding: Emergency Egress/Fire Access		
Ref Drawing: A.101	Job Number: 19103	SK Number: SK-A02
Date: 1/7/2021	Scale: 3/32" = 1'-0"	

Files Location: C:\Users\jaldwin\Documents\Walpole Housing - Omni - Multi-Family\_Linear\_jaldwinF553S.rvt  
Date: 1/7/2021 3:15:11 PM



# PARTIAL SECOND FLOOR PLAN

SCALE: 3/32" = 1'-0"

1

**MAUGEL ARCHITECTS**

200 Ayer Road  
www.maugel.com

Boston | Harvard  
978.456.2800

THESE DOCUMENTS AND ALL IDEAS, ARRANGEMENTS, DESIGNS AND PLANS INDICATED THEREON OR REPRESENTED THEREBY ARE OWNED BY AND REMAIN THE PROPERTY OF MAUGEL ARCHITECTS, INC. AND NO PART THEREOF SHALL BE UTILIZED BY ANY PERSON, FIRM OR CORPORATION FOR ANY PURPOSE WHATSOEVER EXCEPT WITH SPECIFIC WRITTEN PERMISSION © 2013 MAUGEL ARCHITECTS, INC.

**Cedar Crossing - Multifamily: Building 2**  
51-53-55 Summer Street  
Walpole, MA 02071

Regarding: Emergency Egress/Fire Access

Ref Drawing: A.102 Job Number: 19103 SK Number: SK-A03

Date: 1/7/2021 Scale: 3/32" = 1'-0"



PARTIAL EAST ELEVATION

SCALE: 3/32" = 1'-0"

1

MAUGEL ARCHITECTS

200 Ayer Road  
www.maugel.com

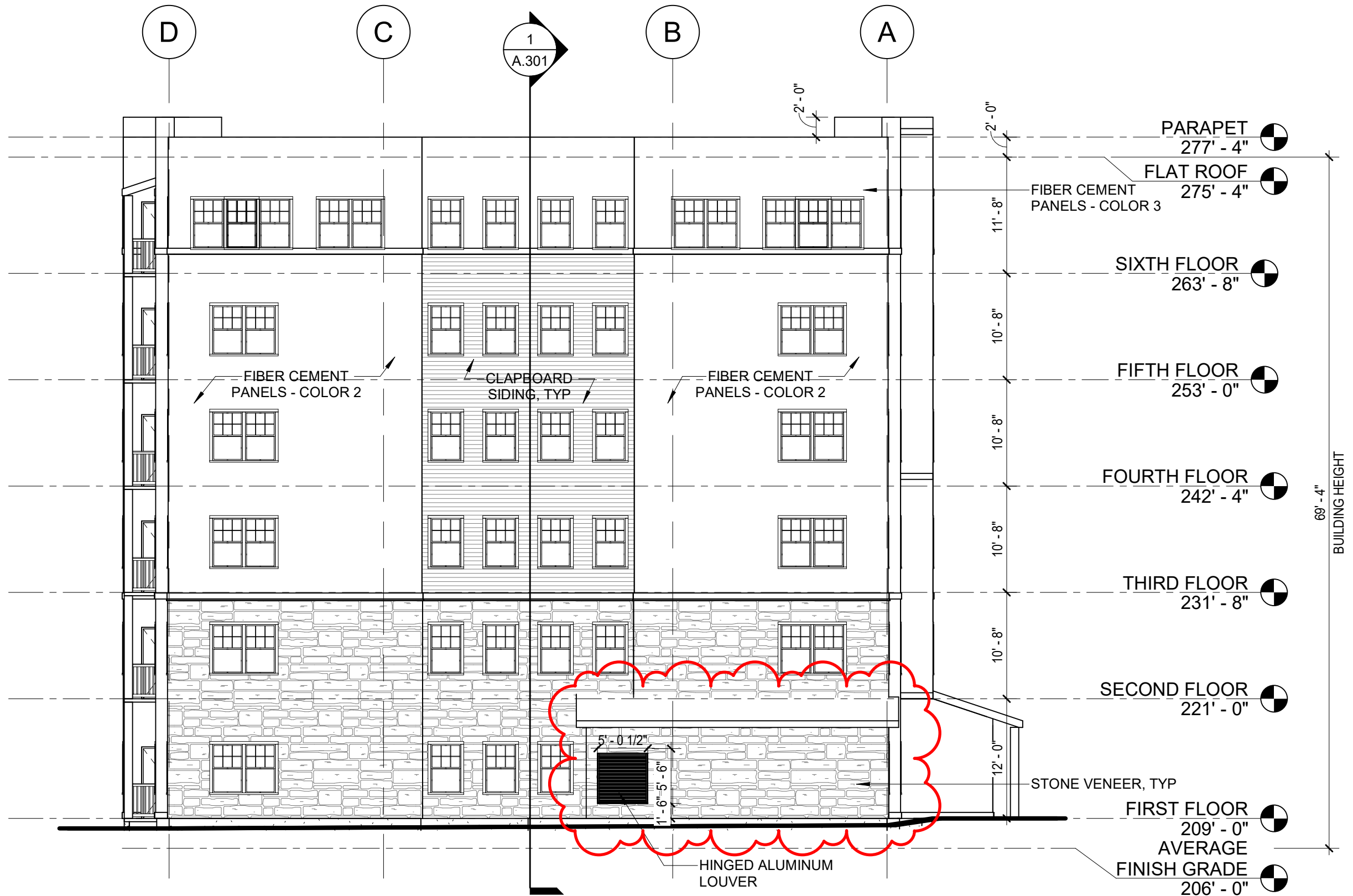
Boston | Harvard  
978.456.2800

THESE DOCUMENTS AND ALL IDEAS, ARRANGEMENTS, DESIGNS AND PLANS INDICATED THEREON OR REPRESENTED THEREBY ARE OWNED BY AND REMAIN THE PROPERTY OF MAUGEL ARCHITECTS, INC. AND NO PART THEREOF SHALL BE UTILIZED BY ANY PERSON, FIRM OR CORPORATION FOR ANY PURPOSE WHATSOEVER EXCEPT WITH SPECIFIC WRITTEN PERMISSION © 2013 MAUGEL ARCHITECTS, INC.

Cedar Crossing - Multifamily: Building 2  
51-53-55 Summer Street  
Walpole, MA 02071

Regarding: Emergency Egress/Fire Access		
Ref Drawing:	2/A.201	Job Number: 19103
Date:	1/7/2021	Scale: 3/32" = 1'-0"
		SK Number: SK-A04

Files Location: C:\Users\jaldwin\Documents\Walpole Housing - Omni - Multi-family\_Linear\_jaldwinF553S.rvt  
Date: 1/7/2021 3:15:15 PM



MAUGEL ARCHITECTS

200 Ayer Road  
www.maugel.com

Boston | Harvard  
978.456.2800

THESE DOCUMENTS AND ALL IDEAS,  
ARRANGEMENTS, DESIGNS AND  
PLANS INDICATED THEREON OR  
REPRESENTED THEREBY ARE  
OWNED BY AND REMAIN THE  
PROPERTY OF MAUGEL ARCHITECTS,  
INC. AND NO PART THEREOF SHALL  
BE UTILIZED BY ANY PERSON, FIRM  
OR CORPORATION FOR ANY  
PURPOSE WHATSOEVER EXCEPT  
WITH SPECIFIC WRITTEN PERMISSION  
© 2013 MAUGEL ARCHITECTS, INC.

**Cedar Crossing - Multifamily: Building 2**  
51-53-55 Summer Street  
Walpole, MA 02071

Regarding: Emergency Egress/Fire Access

Ref Drawing:	1/A.202	Job Number:	19103	SK Number:	SK-A05
Date:	1/7/2021	Scale:	3/32" = 1'-0"		