

131 Common Street 0

Walpole, MA 02081

MLS #72514059

\$549,993

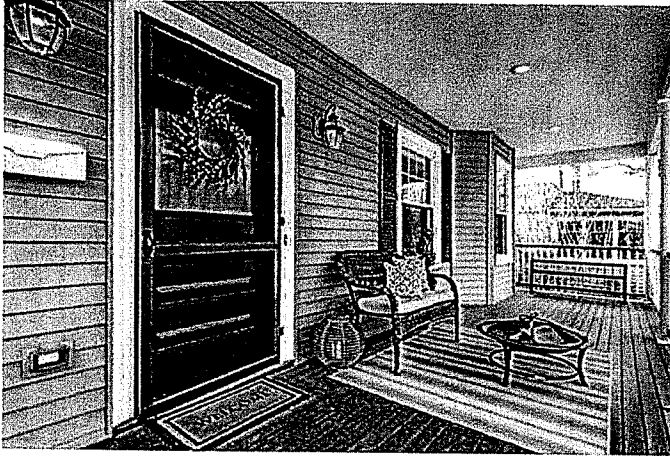
EXPIRED 5/24/19

4 Beds 2.00 Baths

Year Built 1900

1,882 Sq. Ft. (\$292 / sqft)

Days on market: 34



Details

Prop Type: Detached

County: Norfolk

Style: Detached

Full baths: 1.0

Half baths: 1.0

Lot Size: 5,841.0

Garages: 1

List date: 5/24/19

Off-market date: 11/24/19

Updated: Nov 24, 2019 10:05 PM

List Price: \$549,993

Orig list price: \$569,900

High: WHS

Middle: Bird

Elementary: Boyden

Features

Appliances: Range, Dishwasher, Refrigerator

Building Features: Public Transportation, Shopping, Swimming Pool, Tennis Court, Park, Walk/Jog Trails, Golf Course, Bike Path, Highway Access, House of Worship, Private School, Public School, T-Station

Cooling Zones: 1

Cooling: Central Air

Garage: Detached

Flooring: Wood, Tile, Wall to Wall Carpet, Other (See Remarks)

Heat Zones: 1

Heating: Forced Air, Oil

Living Area Source: TARGET:PR

Open Parking Spaces: 4

Parking Features: Off-Street

Roof: Asphalt/Fiberglass Shingles

Rooms Total: 7

Sewer: City/Town Sewer

Tax Annual Amount: 7125.69

Tax Assessed Value: 471900

Tax Book Number: 34340

Tax Year: 2019

Zoning: GR

Water Source: City/Town Water

Waterfront Yn: false

Remarks

THIS IS A SINGLE FAMILY HOME - GREAT CONDO ALTERNATIVE. RARE VILLAGE COLONIAL OFFERING. Once in awhile you find a special property with special charm in a special location. Welcome home to 131 Common Street Walpole. This

Tracy Connell

Wall Street Realty Group

Cell: 5087285996

tracy@wallstreetrealtygroup.com | www.wallstreetrealtygroup.com

property is walking distance to downtown Walpole Center, High School, town forrest, library, pool, playground & the Walpole Commuter Station. Lovingly and thoroughly renovated with every detail one would desire. Gleaming refinished fir floors, antique glass, new lighting fixtures, built-ins, detailed banister and old world details are plentiful. Upgraded kitchen with Brazilian granite and premium appliances, finished 3rd floor bonus room and finished (heated and cooled) basement room. This is a "smart-home" with nest thermostat and security features. Large windows make this home truly bright an airy. All new electrical. One car detached garage, four off-street parking spaces, new 6' fence and a new custom "creative play thing treehouse play-set" make this house a home.

Tracy Connell

Wall Street Realty Group

Cell: 5087285996

tracy@wallstreetrealtygroup.com | www.wallstreetrealtygroup.com

131 Common Street 0

Walpole, MA 02081

MLS #72514059

\$549,993

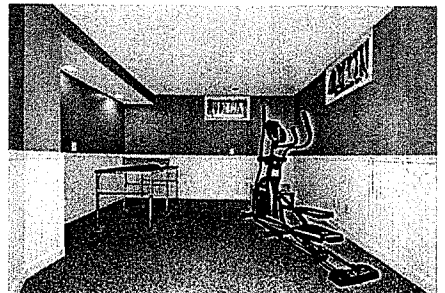
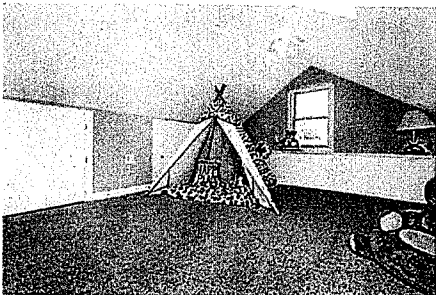
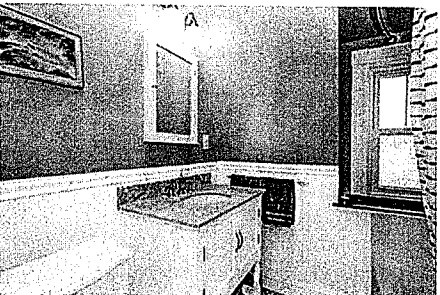
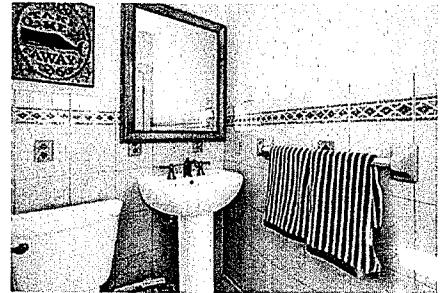
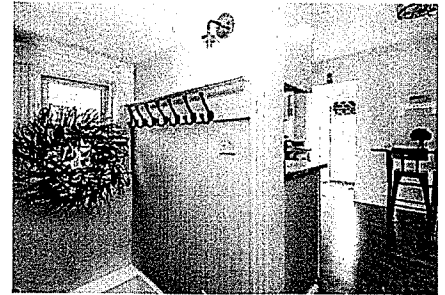
EXPIRED 5/24/19

4 Beds 2.00 Baths

Year Built 1900

1,882 Sq. Ft. (\$292 / sqft)

Days on market: 34



Tracy Connell

Wall Street Realty Group

Cell: 5087285996

tracy@wallstreetrealtygroup.com | www.wallstreetrealtygroup.com

9 Rose Court Way 9 Walpole, MA 02032

MLS #72598432

\$603,000

CLOSED 3/31/20

2 Beds 3.00 Baths

2,141 Sq. Ft. (\$282 / sqft)

Year Built 2003

Days on market: 68



Details

Prop Type: Detached

County: Norfolk

Area: East Walpole

Style: Detached

Full baths: 2.0

Half baths: 1.0

Garages: 2

List date: 12/5/19

Off-market date: 2/11/20

Updated: Apr 1, 2020 3:28 AM

List Price: \$629,000

Orig list price: \$639,000

Features

Appliances: Wall Oven, Dishwasher, Disposal, Compactor, Microwave, Countertop Range, Refrigerator, Washer, Dryer, Vacuum System

Association Fee: 527

Association Fee Includes: Exterior Maintenance, Road Maintenance, Landscaping, Snow Removal, Putting Green, Refuse Removal

Building Features: Public Transportation, Shopping, Tennis Court, Park, Walk/Jog Trails, Golf Course, Medical Facility, Highway Access, House of Worship

Cooling Zones: 2

Construction Materials: Frame

Cooling: Central Air

Energy Features: Insulated Windows, Storm Windows

Exterior Features: Porch, Deck, Professional Landscaping, Sprinkler System, Stone Wall

Garage: Attached, Garage Door Opener

Fireplaces Total: 1

Flooring: Wood, Tile

Heat Zones: 2

Hot Water: Natural Gas

Heating: Forced Air, Gas

Living Area Source: TARGET:PR

Open Parking Spaces: 6

Parking Features: Off-Street

Roof: Asphalt/Fiberglass Shingles

Rooms Total: 6

Senior Community Yn: true

Sewer: City/Town Sewer

Tax Annual Amount: 7334.0

Tax Assessed Value: 485700

Tax Book Number: 36927

Tax Parcel Letter: M:00020 B:00006 L:00022

Tax Year: 2019

Zoning: res

Tracy Connell

Wall Street Realty Group

Cell: 5087285996

tracy@wallstreetrealtygroup.com | www.wallstreetrealtygroup.com

Utilities: for Gas Range, for Electric Oven, for Gas Dryer, Washer Hookup, Icemaker Connection

Water Source: City/Town Water

Waterfront Yn: false

Remarks

LOCATION! LOCATION! LOCATION! Elegant open floor plan with two story wall of windows welcomes you into this easy lifestyle that now can be yours! The sun shines all day long in this DETACHED END unit condo! Gourmet eat in kitchen with Wolfe cooktop, GE Monogram wall oven, microwave, and gorgeous granite counters / backsplash. Laundry is right around the corner. Two story living room with gas fireplace and elegant dining room with bay window. Private 1st floor Master ,vaulted ceiling, walk in closet, full bath with tiled shower,granite seat and spa tub. 2nd floor has loft family room that overlooks the living room and 2nd bedroom with vaulted ceiling and full bath. Huge unfinished basement, plumbed for a bath, walkout to stone patio and beautiful stone wall is waiting for your finishing touches. Heating, A/C, windows, kitchen are just a few of the upgrades that were incorporated during construction. See it now! ONE OWNER/OCCUPANT MUST BE 55+

Tracy Connell

Wall Street Realty Group

Cell: 5087285996

tracy@wallstreetrealtygroup.com | www.wallstreetrealtygroup.com

9 Rose Court Way 9

Walpole, MA 02032

MLS #72598432

\$603,000

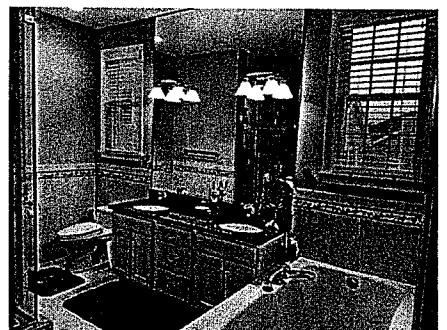
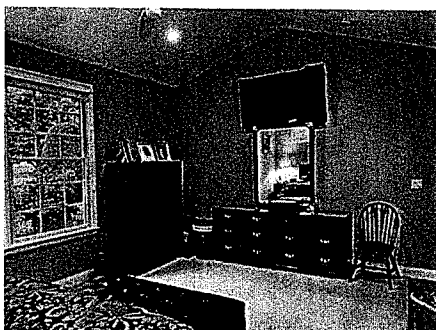
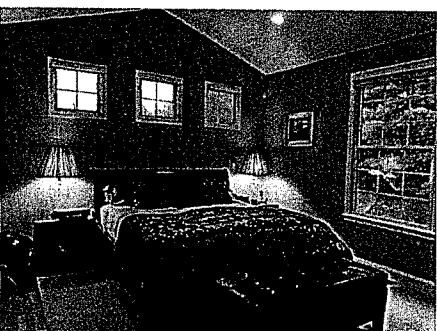
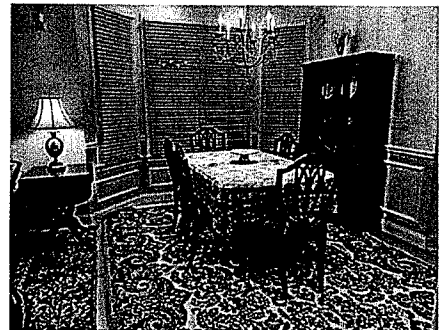
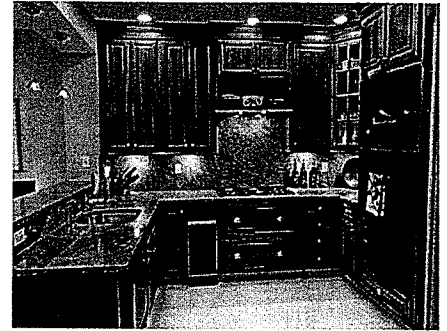
2 Beds 3.00 Baths

2,141 Sq. Ft. (\$282 / sqft)

CLOSED 3/31/20

Year Built 2003

Days on market: 68



Tracy Connell

Wall Street Realty Group

Cell: 5087285996

tracy@wallstreetrealtygroup.com | www.wallstreetrealtygroup.com

8 Rose Court Way 8 Walpole, MA 02032

MLS #72542940

\$580,000

CLOSED 2/7/20

2 Beds 4.00 Baths

2,266 Sq. Ft. (\$256 / sqft)

Year Built 2003

Days on market: 155



Details

Prop Type:
Detached,Townhouse
County: Norfolk
Area: East Walpole
Style: Detached,Townhouse

Full baths: 3.0
Half baths: 1.0
Garages: 2
List date: 7/31/19

Off-market date: 1/2/20
Updated: Feb 7, 2020 5:39 AM
List Price: \$600,000
Orig list price: \$729,900

High: N/A
Middle: N/A
Elementary: N/A

Features

Appliances: Range, Dishwasher, Disposal, Microwave, Refrigerator
Association Fee: 622
Association Fee Includes: Exterior Maintenance, Road Maintenance, Landscaping, Snow Removal, Refuse Removal

Building Features: Public Transportation, Shopping, Swimming Pool, Tennis Court, Park, Walk/Jog Trails, Stables, Golf Course, Medical Facility, Laundromat, Bike Path, Conservation Area, Highway Access, House of Worship, Private School, Public School
Cooling Zones: 2
Construction Materials: Frame, Conventional (2x4-2x6)
Cooling: Central Air

Energy Features: Insulated Windows, Storm Windows, Insulated Doors, Prog. Thermostat
Exterior Features: Porch, Deck - Wood, Gutters, Professional Landscaping, Sprinkler System
Garage: Attached, Garage Door Opener, Heated, Storage, Insulated
Fireplaces Total: 1
Flooring: Wood, Tile, Wall to Wall Carpet

Heat Zones: 2
Hot Water: Natural Gas
Heating: Central Heat, Gas
Living Area Source: TARGET:PR
Open Parking Spaces: 4
Parking Features: Off-Street, Improved Driveway, Exclusive Parking
Roof: Asphalt/Fiberglass Shingles
Rooms Total: 10
Sewer: City/Town Sewer

Tracy Connell

Wall Street Realty Group
Cell: 5087285996

tracy@wallstreetrealtygroup.com | www.wallstreetrealtygroup.com

Tax Annual Amount: 9892.0	Tax Year: 2019	Waterview Feat: Pond	Waterfront Yn: true
Tax Assessed Value: 647800	Zoning: RES	Water Source: City/Town	
Tax Book Number: 30198	Utilities: for Gas Range	Water:	

Remarks

VALUE RANGE PRICING-MOTIVATED SELLER WILL CONSIDER OFFERS BETWEEN \$600,000 & \$650,000. Appealing one-floor living available in this stunning Riverwalk stand-alone condo! Elegant open floor plan welcomes you into this easy lifestyle. Gourmet-style kitchen features eat-in area, granite countertops, under & over cab lighting, SS appl. & tile floor. A wall of windows overlooks the Neponset River. The living area features hardwoods, a gas fireplace & an elegant open dining room. First floor master has vaulted ceiling, hardwoods, 2 closets, full bath with double vanity, soaking tub and shower. A powder and laundry room complete the first floor. The second floor features a loft, guest suite with full bath, and office nook. The finished lower level features a walk-out, full bath with sauna & plenty of storage. Other features include a two car garage, ceiling fans, central vac, new furnace & upgraded central a/c. This former model home, with a newly painted exterior is available immediately.

Tracy Connell

Wall Street Realty Group

Cell: 5087285996

tracy@wallstreetrealtygroup.com | www.wallstreetrealtygroup.com

8 Rose Court Way 8 Walpole, MA 02032

MLS #72542940

\$580,000

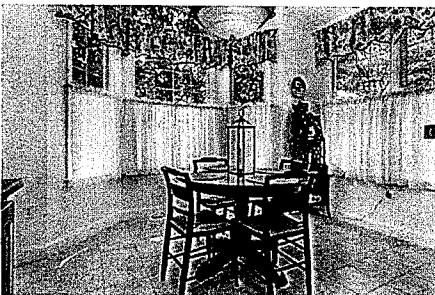
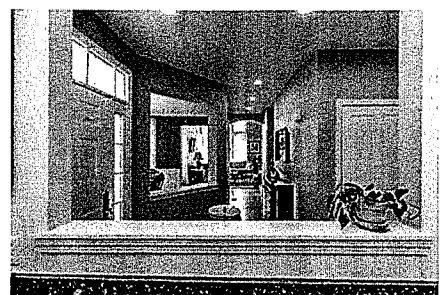
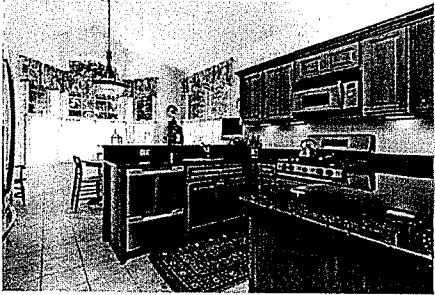
2 Beds 4.00 Baths

2,266 Sq. Ft. (\$256 / sqft)

CLOSED 2/7/20

Year Built 2003

Days on market: 155



Tracy Connell

Wall Street Realty Group

Cell: 5087285996

tracy@wallstreetrealtygroup.com | www.wallstreetrealtygroup.com

8 Tilton Court 8 Walpole, MA 02081

MLS #72619383

\$599,000

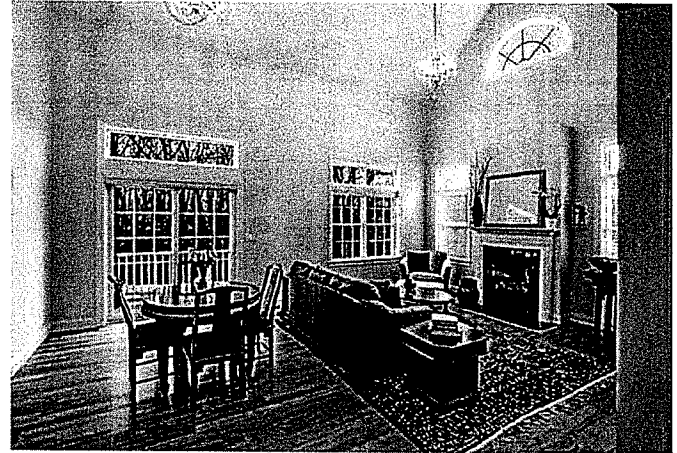
PENDING 2/13/20

3 Beds 3.00 Baths

1,948 Sq. Ft. (\$307 / sqft)

Year Built 2013

Days on market: 30



Details

Prop Type: Townhouse

Half baths: 1.0

Updated: Mar 14, 2020 2:39 PM

County: Norfolk

Garages: 1

Style: Townhouse

List date: 2/13/20

List Price: \$599,000

Full baths: 2.0

Off-market date: 3/13/20

Orig list price: \$599,000

Features

Appliances: Range, Dishwasher, Disposal, Refrigerator, Washer, Dryer

Cooling Zones: 1

Living Area Source: TARGET:PR

Tax Assessed Value: 495600

Association Fee: 411

Cooling: Central Air

Open Parking Spaces: 2

Tax Book Number: 31976

Association Fee Includes: Master Insurance, Exterior Maintenance, Road Maintenance, Landscaping, Snow Removal, Refuse Removal

Exterior Features: Deck

Parking Features: Paved Driveway

Tax Year: 2019

Building Features: Shopping, Highway Access, T-Station

Garage: Attached

Roof: Asphalt/Fiberglass Shingles

Zoning: GR

Fireplaces Total: 1

Flooring: Wood, Wall to Wall Carpet

Rooms Total: 6

Utilities: for Gas Range

Heat Zones: 2

Hot Water: Natural Gas

Sewer: City/Town Sewer

Water Source: City/Town Water

Heating: Forced Air, Gas

Tax Annual Amount: 7266.12

Waterfront Yn: false

Tracy Connell

Wall Street Realty Group

Cell: 5087285996

tracy@wallstreetrealtygroup.com | www.wallstreetrealtygroup.com

Remarks

Located at the end of a quiet cul-de-sac with views of conservation land, this sun-filled townhouse style condo feels far from it all yet is conveniently located close to the Commuter Rail and major highways. This home boasts a spacious entryway leading to an open concept dining and living area with gas fireplace. The well appointed kitchen has a large island with seating, quartz countertops and gas range. The large first floor master bedroom includes a walk in closet and master bath with double vanity and walk in shower. Upstairs is a loft area, perfect for an office space. Two spacious bedrooms and a full bath round out this level. The huge unfinished basement offers expansion potential. Move right in to this turn key home!

Tracy Connell

Wall Street Realty Group

Cell: 5087285996

tracy@wallstreetrealtygroup.com | www.wallstreetrealtygroup.com

8 Tilton Court 8 Walpole, MA 02081

MLS #72619383

\$599,000

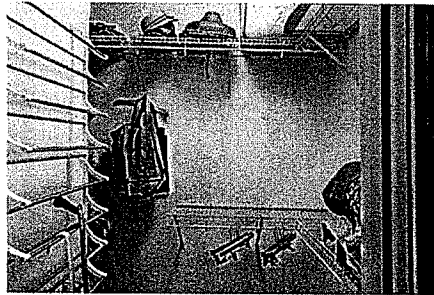
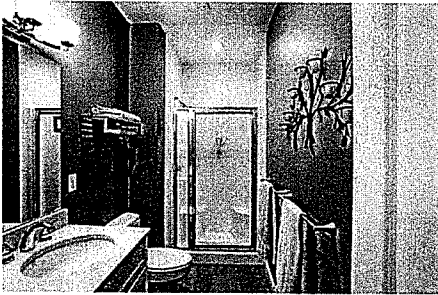
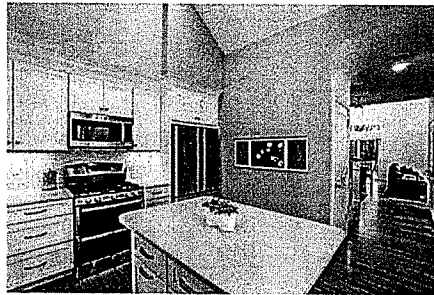
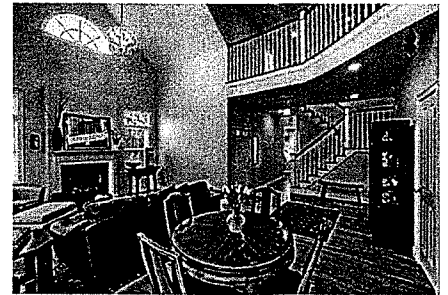
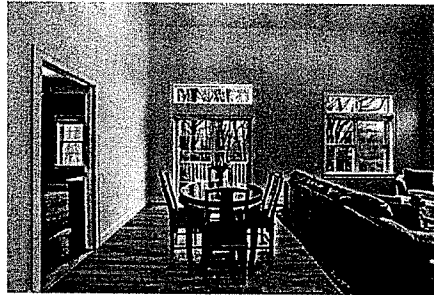
PENDING 2/13/20

3 Beds 3.00 Baths

Year Built 2013

1,948 Sq. Ft. (\$307 / sqft)

Days on market: 30



Tracy Connell

Wall Street Realty Group

Cell: 5087285996

tracy@wallstreetrealtygroup.com | www.wallstreetrealtygroup.com

1411 Pennington Drive 1411 Walpole, MA 02081

MLS #72488783

\$534,550

PENDING 4/13/19

2 Beds 2.00 Baths

1,326 Sq. Ft. (\$403 / sqft)

Year Built 2019

Days on market: 121



Details

Prop Type: Garden, Mid-Rise

Full baths: 2.0

Off-market date: 10/13/19

List Price: \$534,550

County: Norfolk

Garages: 1

Updated: Mar 1, 2020 4:44 AM

Orig list price: \$506,995

Style: Garden, Mid-Rise

List date: 4/13/19

Features

Appliances: Range, Dishwasher, Microwave, Washer, Dryer

Association Fee: 395

Association Fee Includes: Water, Sewer, Master Insurance, Security, Elevator, Exterior Maintenance, Road Maintenance, Landscaping, Snow Removal, Walking/Jogging Trails, Refuse Removal

Building Features: Public Transportation, Shopping, Park, Walk/Jog Trails, Golf Course, Medical Facility, Conservation Area, House of Worship, T-Station

Cooling Zones: 1

Construction Materials: Frame

Cooling: Central Air, Individual, Unit Control

Energy Features: Insulated Windows, Insulated Doors, Prog. Thermostat

Exterior Features: Balcony, Gazebo

Garage: Under, Deeded

Flooring: Tile, Wall to Wall Carpet, Hardwood

Heat Zones: 1

Hot Water: Natural Gas, Tankless

Heating: Central Heat, Gas

Living Area Source: Other

Open Parking Spaces: 1

Parking Features: Off-Street, Common

Roof: Asphalt/Composition Shingles

Rooms Total: 5

Senior Community Yn: true

Sewer: City/Town Sewer

Tax Annual Amount: 15.1

Tax Book Number: 0

Tax Year: 2019

Zoning: Res

Utilities: for Electric Range, for Electric Oven, for Electric Dryer, Washer Hookup, Icemaker Connection

Water Source: City/Town Water

Waterfront Yn: false

Tracy Connell

Wall Street Realty Group
Cell: 5087285996

tracy@wallstreetrealtygroup.com | www.wallstreetrealtygroup.com

Remarks

New Construction! The long-awaited, 55+ community - Pennington Crossing is now open! MODERN SECURE ELEVATOR BUILDING! This 1,326SF single level 2 bedroom Hinsdale style home features an open eat-in granite kitchen, large living room w/private balcony, separate den/office, spacious master suite w/walk-in closet, full bath with walk-in shower, full sized washer & dryer, hardwood flooring plus lots of crown & panel moldings. Deeded garage parking and more! Quaint community close to all major highways shopping, recreation & more! Price includes pre-selected options and finishes. Please visit our Sales Center Open Tuesday - Sunday 10-4, Monday by Appointment.

Tracy Connell

Wall Street Realty Group

Cell: 5087285996

tracy@wallstreetrealtygroup.com | www.wallstreetrealtygroup.com

1411 Pennington Drive 1411

Walpole, MA 02081

MLS #72488783

\$534,550

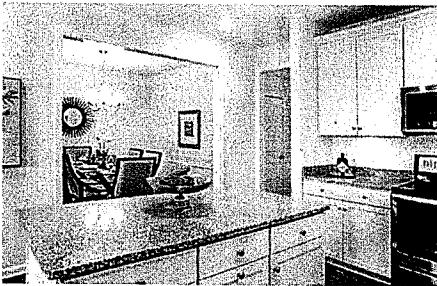
PENDING 4/13/19

2 Beds 2.00 Baths

Year Built 2019

1,326 Sq. Ft. (\$403 / sqft)

Days on market: 121



Tracy Connell

Wall Street Realty Group

Cell: 5087285996

tracy@wallstreetrealtygroup.com | www.wallstreetrealtygroup.com

1407 Pennington Drive 1407

Walpole, MA 02081

MLS #72519203

\$541,995

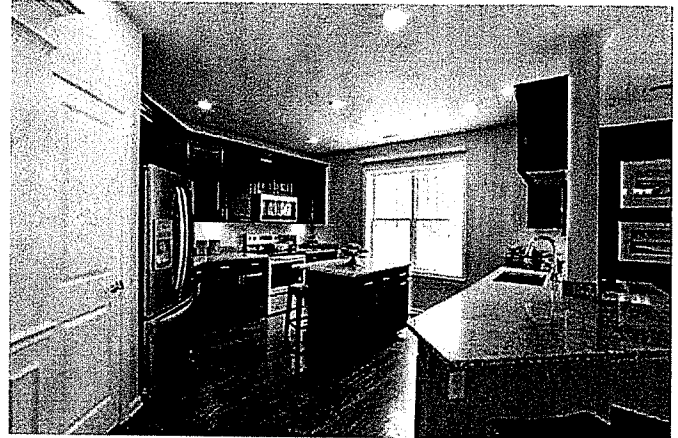
PENDING 4/29/19

2 Beds 2.00 Baths

1,470 Sq. Ft. (\$369 / sqft)

Year Built 2019

Days on market: 46



Details

Prop Type: Garden, Mid-Rise
County: Norfolk
Style: Garden, Mid-Rise

Full baths: 2.0
Garages: 2
List date: 4/29/19

Off-market date: 6/14/19
Updated: Mar 24, 2020 6:33 AM

List Price: \$541,995
Orig list price: \$541,995

Features

Appliances: Range, Dishwasher, Microwave, Washer, Dryer

Association Fee: 399

Association Fee Includes: Water, Sewer, Master Insurance, Security, Elevator, Exterior Maintenance, Road Maintenance, Landscaping, Snow Removal, Refuse Removal

Building Features: Public Transportation, Shopping, Park, Walk/Jog Trails, Medical Facility, Conservation Area, Highway Access, House of Worship, T-Station

Cooling Zones: 1

Construction Materials: Frame

Cooling: Central Air, Individual, Unit Control

Energy Features: Insulated Windows, Insulated Doors, Prog. Thermostat

Exterior Features: Balcony, Gazebo

Garage: Under, Deeded

Flooring: Tile, Wall to Wall Carpet, Hardwood

Heat Zones: 1

Hot Water: Natural Gas, Tankless

Heating: Central Heat, Gas

Living Area Source: Other

Open Parking Spaces: 1

Parking Features: Off-Street, Common

Roof: Asphalt/Composition Shingles

Rooms Total: 5

Senior Community Yn: true

Sewer: City/Town Sewer

Tax Annual Amount: 15.1

Tax Assessed Value: 1

Tax Book Number: 0

Tax Year: 2019

Zoning: Res

Utilities: for Electric Range, for Electric Oven, for Electric Dryer, Washer Hookup, Icemaker Connection

Water Source: City/Town Water

Waterfront Yn: false

Tracy Connell

Wall Street Realty Group
Cell: 5087285996

tracy@wallstreetrealtygroup.com | www.wallstreetrealtygroup.com

Remarks

Walpoles newest 55+ condominium community is conveniently located within walking distance to Walpole Center and commuter rail. The Islebrook is a spacious two-bedroom, 2 bath single level corner unit condo. Gorgeous open floor plan, bright kitchen with center island and granite counters. dining room/flex room, this unit is located on the fourth floor and offers a private balcony and comes with 2 parking spaces in the underground garage. There is an elevator in the building. Still time to select your personalized options and finishes. 10 Year Warranty! Built by Pulte Homes a name you can count on! NEW CONSTRUCTION/TO BE BUILT. December 2019 delivery. Please Visit our Sales Center Open Tuesday - Sunday 10-4, Monday's by Appointment.

Tracy Connell

Wall Street Realty Group
Cell: 5087285996

tracy@wallstreetrealtygroup.com | www.wallstreetrealtygroup.com

1407 Pennington Drive 1407

Walpole, MA 02081

MLS #72519203

\$541,995

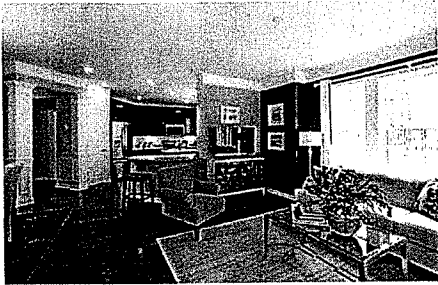
2 Beds 2.00 Baths

1,470 Sq. Ft. (\$369 / sqft)

PENDING 4/29/19

Year Built 2019

Days on market: 46



Tracy Connell

Wall Street Realty Group

Cell: 5087285996

tracy@wallstreetrealtygroup.com | www.wallstreetrealtygroup.com

1107 Pennington Drive 107 Walpole, MA 02081

MLS #72489243

\$549,965

CANCELED 4/26/19

2 Beds 2.00 Baths

Year Built 2019

1,470 Sq. Ft. (\$374 / sqft)

Days on market: 161



Details

Prop Type: Garden, Mid-Rise
County: Norfolk
Style: Garden, Mid-Rise

Full baths: 2.0
Garages: 2
List date: 4/26/19

Off-market date: 10/4/19
Updated: Oct 4, 2019 11:52 AM

List Price: \$549,965
Orig list price: \$506,995

Features

Appliances: Range, Dishwasher, Microwave, Washer, Dryer
Association Fee: 399
Association Fee Includes: Water, Sewer, Master Insurance, Elevator, Exterior Maintenance, Road Maintenance, Landscaping, Snow Removal, Clubroom, Walking/Jogging Trails, Refuse Removal

Building Features: Public Transportation, Shopping, Park, Walk/Jog Trails, Medical Facility, Conservation Area, Highway Access, House of Worship, T-Station
Cooling Zones: 1
Construction Materials: Frame
Cooling: Central Air, Individual, Unit Control
Energy Features: Insulated Windows, Insulated Doors, Prog. Thermostat
Exterior Features: Balcony, Gazebo

Garage: Under, Deeded, Assigned
Flooring: Tile, Wall to Wall Carpet, Hardwood
Heat Zones: 1
Hot Water: Natural Gas, Tankless
Heating: Central Heat, Gas
Living Area Source: Other
Open Parking Spaces: 1
Parking Features: Common
Roof: Asphalt/Composition Shingles
Rooms Total: 4
Senior Community Yn: true

Sewer: City/Town Sewer
Tax Annual Amount: 15.1
Tax Assessed Value: 1
Tax Book Number: 0
Tax Year: 2019
Zoning: r
Utilities: for Electric Range, for Electric Oven, for Electric Dryer, Washer Hookup, Icemaker Connection
Water Source: City/Town Water
Waterfront Yn: false

Tracy Connell

Wall Street Realty Group
 Cell: 5087285996

tracy@wallstreetrealtygroup.com | www.wallstreetrealtygroup.com

Remarks

NEW CONSTRUCTION in Walpole! Brand New 55+ Community. Single level Islebrook style home includes a 2-car garage parking. This corner unit features an open eat-in granite kitchen, large living room w/private balcony, dining room/flex room, spacious master suite w/walk-in closet, full bath with walk-in shower, guest bedroom with full bath, full sized side by side washer & dryer and hardwood flooring. Lots of windows and light! Great location! Walk to Walpole Center, shopping, restaurants & commuter rail. Close to Rte 1 & Rte 95. Please visit our Sales office located at 767 East St. Open Tuesday - Sunday 10am - 4pm, by Appt only on Mondays.

Tracy Connell

Wall Street Realty Group

Cell: 5087285996

tracy@wallstreetrealtygroup.com | www.wallstreetrealtygroup.com

1107 Pennington Drive 107

Walpole, MA 02081

MLS #72489243

\$549,965

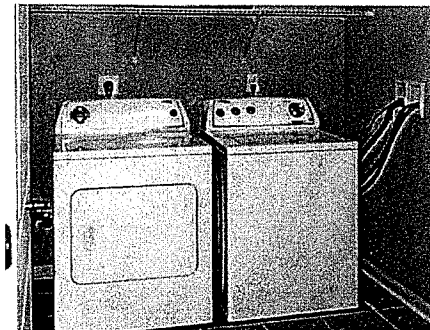
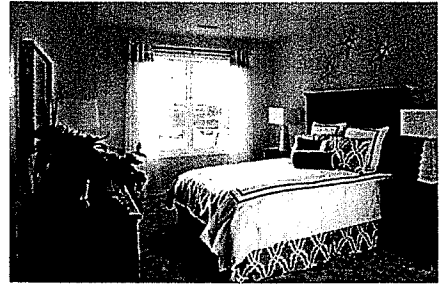
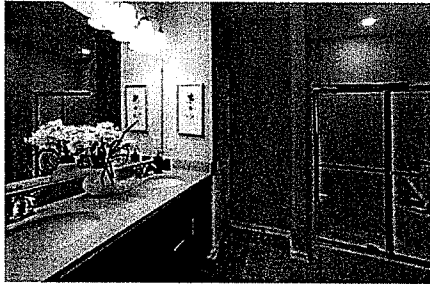
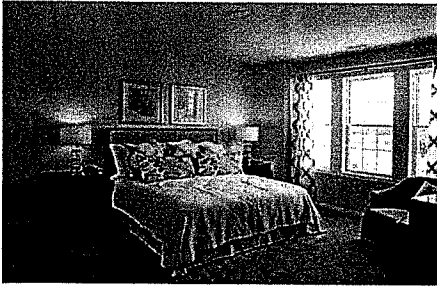
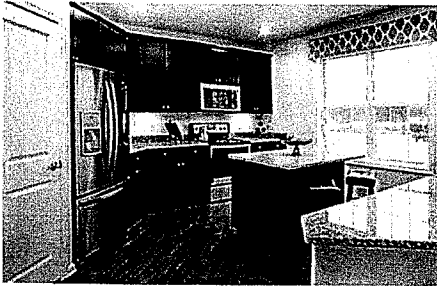
2 Beds 2.00 Baths

1,470 Sq. Ft. (\$374 / sqft)

CANCELED 4/26/19

Year Built 2019

Days on market: 161



Tracy Connell

Wall Street Realty Group

Cell: 5087285996

tracy@wallstreetrealtygroup.com | www.wallstreetrealtygroup.com

635 Old Post Rd 34 Sharon, MA 02067

MLS #72440485

\$600,000

CANCELED 1/14/19

2 Beds 3.00 Baths

1,922 Sq. Ft. (\$312 / sqft)

Year Built 2019

Days on market: 95



Details

Prop Type: Garden

County: Norfolk

Style: Garden

Full baths: 2.0

Half baths: 1.0

Garages: 1

List date: 1/14/19

Off-market date: 4/19/19

Updated: Apr 19, 2019 8:14 AM

List Price: \$600,000

Orig list price: \$600,000

Features

Appliances: Range, Dishwasher, Microwave, Refrigerator, Vent Hood

Association Fee: 425

Association Fee Includes: Water, Sewer, Master Insurance, Elevator, Exterior Maintenance, Road Maintenance, Landscaping, Snow Removal, Exercise Room, Clubroom, Refuse Removal

Building Features: Public Transportation, Shopping, Swimming Pool, Tennis Court, Park, Walk/Jog Trails, Golf Course, Highway Access, T-Station

Cooling Zones: 1

Construction Materials: Frame

Cooling: Central Air

Energy Features: Insulated Windows, Insulated Doors, Prog. Thermostat

Exterior Features: Balcony, Screens, Gutters, Sprinkler System, Stone Wall

Garage: Under, Garage Door Opener, Deeded

Flooring: Wood, Tile, Wall to Wall Carpet

Heat Zones: 1

Hot Water: Electric, Tankless

Heating: Forced Air, Heat Pump, Electric

Living Area Source: Unit Floor Plan

Open Parking Spaces: 2

Parking Features: Off-Street, Assigned, Guest, Paved Driveway

Roof: Asphalt/Fiberglass Shingles

Rooms Total: 6

Senior Community Yn: true

Sewer: Private Sewerage

Tax Book Number: 0

Tax Year: 2019

Zoning: R

Utilities: for Electric Range, for Electric Oven, for Electric Dryer, Washer Hookup, Icemaker Connection

Tracy Connell

Wall Street Realty Group

Cell: 5087285996

tracy@wallstreetrealtygroup.com | www.wallstreetrealtygroup.com

Water Source: City/Town
Water

Waterfront Yn: false

Remarks

Welcome Home to 635 Old Post, the South Shores newest active adult community. These beautiful new construction single level garden style and two story penthouse units - all with open floor plans and designer selections - are built with you in mind. Each unit is equipped with hardwood floors, stainless steel appliances, granite or quartz countertops and beautiful finishes throughout. Outstanding amenities include underground parking, elevator, private gym, club room, golf course views and a newly created dog park. Conveniently located within minutes of Patriot Place, Gillette Stadium and Plainridge Casino. Schedule your private tour today!

Tracy Connell

Wall Street Realty Group
Cell: 5087285996

tracy@wallstreetrealtygroup.com | www.wallstreetrealtygroup.com

635 Old Post Rd 34 Sharon, MA 02067

MLS #72440485

\$600,000

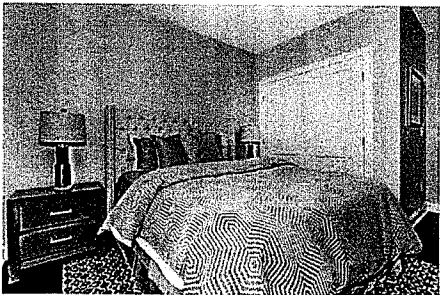
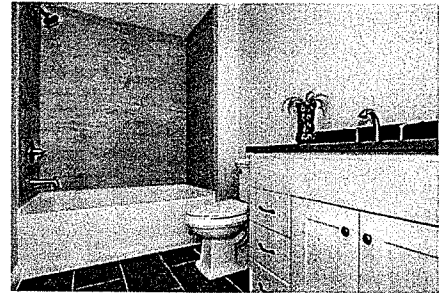
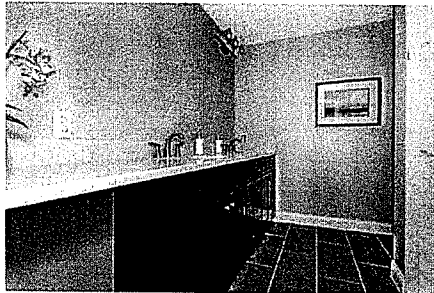
2 Beds 3.00 Baths

1,922 Sq. Ft. (\$312 / sqft)

CANCELED 1/14/19

Year Built 2019

Days on market: 95



Tracy Connell

Wall Street Realty Group

Cell: 5087285996

tracy@wallstreetrealtygroup.com | www.wallstreetrealtygroup.com

1406 Pennington Drive 1406 Walpole, MA 02081

MLS #72501820

\$535,785

ACTIVE 5/16/19

2 Beds 2.00 Baths

Year Built 2020

1,470 Sq. Ft. (\$364 / sqft)

Days on market: 326



Details

Prop Type: Low-Rise

County: Norfolk

Style: Low-Rise

Full baths: 2.0

Garages: 2

List date: 5/16/19

Updated: Mar 17, 2020 10:21 AM

List Price: \$535,785

Orig list price: \$536,995

Features

Appliances: Range, Dishwasher, Disposal, Microwave, Washer, Dryer

Association Fee: 430

Association Fee Includes: Water, Sewer, Master Insurance, Elevator, Exterior Maintenance, Road Maintenance, Landscaping, Snow Removal, Walking/Jogging Trails, Refuse Removal, TARGET:9

Building Features: Public Transportation, Shopping, Park, Walk/Jog Trails, Medical Facility, Conservation Area, Highway Access, House of Worship, Public School, T-Station

Cooling Zones: 1

Construction Materials: Stone/Concrete, Timber Frame

Cooling: Central Air, Individual, Unit Control

Energy Features: Insulated Windows, Insulated Doors, Prog. Thermostat

Exterior Features: Balcony, Gazebo

Garage: Under, Deeded

Flooring: Tile, Wall to Wall Carpet, Engineered Hardwood

Heat Zones: 1

Hot Water: Natural Gas, Tankless

Heating: Central Heat, Gas, Individual, Unit Control, Hydro Air

Living Area Source: Owner

Open Parking Spaces: 1

Parking Features: Off-Street, Common

Roof: Rubber, Asphalt/Composition Shingles

Rooms Total: 5

Senior Community Yn: true

Sewer: City/Town Sewer

Tax Annual Amount: 14.99

Tax Assessed Value: 1

Tax Book Number: 0

Tax Year: 2020

Zoning: Res

Utilities: for Electric Range, for Electric Oven, for Electric Dryer, Washer Hookup, Icemaker Connection

Tracy Connell

Wall Street Realty Group
Cell: 5087285996

tracy@wallstreetrealtygroup.com | www.wallstreetrealtygroup.com

Water Source: City/Town
Water

Waterfront Yn: false

Remarks

SPECIAL PRICING ON THIS SELECT HOME including lots of beautiful upgrades! Walpoles newest 55+ condominium community is conveniently located to Walpole Center and the Commuter Rail! This 1,470 SF 2 Bed/2 Bath corner home features 15 windows of southwest exposure, a gorgeous open floor plan, beautiful kitchen finishes with center island and granite counters, as well as an elegant dining space. This home is located on the fourth floor and offers a private balcony and comes with 2 parking spaces in the underground garage.

Tracy Connell

Wall Street Realty Group

Cell: 5087285996

tracy@wallstreetrealtygroup.com | www.wallstreetrealtygroup.com

1406 Pennington Drive 1406

Walpole, MA 02081

MLS #72501820

\$535,785

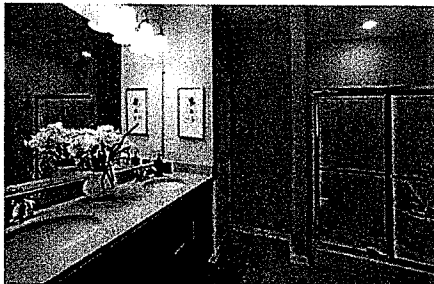
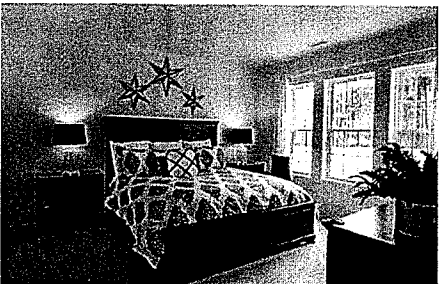
ACTIVE 5/16/19

2 Beds 2.00 Baths

Year Built 2020

1,470 Sq. Ft. (\$364 / sqft)

Days on market: 326



Tracy Connell

Wall Street Realty Group

Cell: 5087285996

tracy@wallstreetrealtygroup.com | www.wallstreetrealtygroup.com

1307 Pennington Drive 1307 Walpole, MA 02081

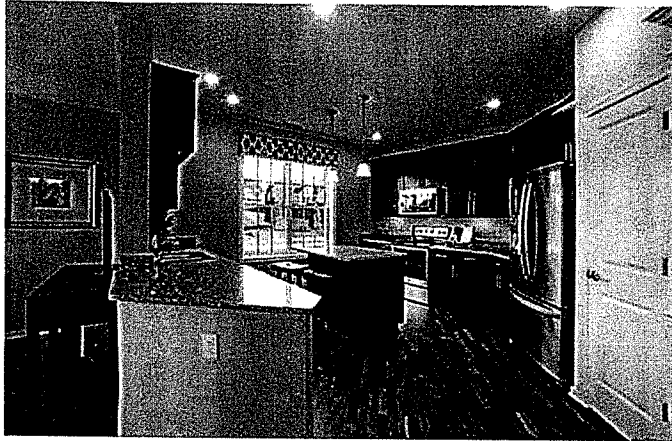
MLS #72575852

\$535,620

ACTIVE 10/5/19

2 Beds 2.00 Baths
Year Built 2020

1,470 Sq. Ft. (\$364 / sqft)
Days on market: 184



Details

Prop Type: Low-Rise
County: Norfolk
Style: Low-Rise

Full baths: 2.0
Garages: 2
List date: 10/5/19

Updated: Mar 17, 2020 10:18 AM
List Price: \$535,620

Orig list price: \$534,105

Features

Appliances: Wall Oven, Dishwasher, Disposal, Microwave, Countertop Range, Washer, Dryer

Association Fee: 430

Association Fee Includes: Water, Sewer, Master Insurance, Elevator, Exterior Maintenance, Road Maintenance, Landscaping, Snow Removal, Refuse Removal, TARGET:9

Building Features: Public Transportation, Shopping, Park, Walk/Jog Trails, Medical Facility, Conservation Area, Highway Access, House of Worship, T-Station

Cooling Zones: 1

Construction Materials: Stone/Concrete, Timber Frame

Cooling: Central Air, Individual, Unit Control

Energy Features: Insulated Windows, Insulated Doors, Prog. Thermostat

Exterior Features: Balcony, Gazebo

Garage: Under, Deeded, Common, Insulated

Flooring: Tile, Wall to Wall Carpet, Engineered Hardwood

Heat Zones: 1

Hot Water: Natural Gas, Tankless

Heating: Central Heat, Gas, Individual, Unit Control, Hydro Air

Living Area Source: Owner

Open Parking Spaces: 2

Parking Features: Off-Street, Common

Roof: Rubber, Asphalt/Composition Shingles

Rooms Total: 5

Senior Community Yn: true

Sewer: City/Town Sewer

Tax Annual Amount: 14.99

Tax Assessed Value: 1

Tax Book Number: 0

Tax Year: 2020

Zoning: Res

Tracy Connell

Wall Street Realty Group
 Cell: 5087285996

tracy@wallstreetrealtygroup.com | www.wallstreetrealtygroup.com

Utilities: for Electric Range,
for Electric Oven, for Electric
Dryer, Washer Hookup,
Icemaker Connection

Water Source: City/Town
Water

Waterfront Yn: false

Remarks

SPECIAL PRICING ON THIS BRAND NEW HOME at Pennington Crossing, the areas new premier contemporary life style. Lots of upgrades included in this single level supersized home features designer gourmet kitchen w/island open to dining room & large sun splashed great room, private balcony, spacious master suite with walk-in closet; private guest wing, utility room w/washer & dryer, hardwood flooring, crown & panel moldings, 9 ft ceilings throughout and recessed lighting. 2 car underground garage parking! Elevator building. Professionally managed association. Walk to Walpole Center, Library, Restaurants and Commuter Rail. Close to major highways! 2020 Spring Occupancy! Zoned 55+

Tracy Connell

Wall Street Realty Group

Cell: 5087285996

tracy@wallstreetrealtygroup.com | www.wallstreetrealtygroup.com

1307 Pennington Drive 1307

Walpole, MA 02081

MLS #72575852

\$535,620

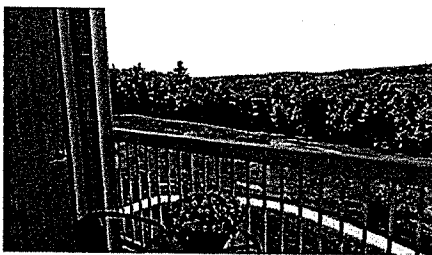
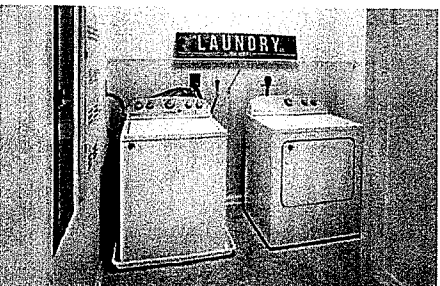
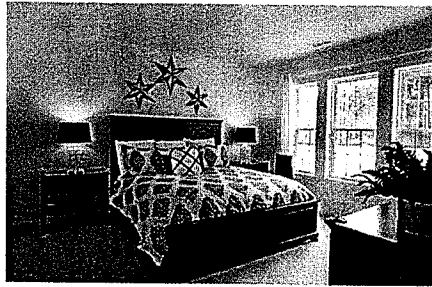
ACTIVE 10/5/19

2 Beds 2.00 Baths

Year Built 2020

1,470 Sq. Ft. (\$364 / sqft)

Days on market: 184



Tracy Connell

Wall Street Realty Group

Cell: 5087285996

tracy@wallstreetrealtygroup.com | www.wallstreetrealtygroup.com

267 Plimpton St 267 Walpole, MA 02081

MLS #72635618

\$645,000

ACTIVE 3/19/20

3 Beds 3.00 Baths

2,494 Sq. Ft. (\$259 / sqft)

Year Built 2007

Days on market: 18



Details

Prop Type: Townhouse
County: Norfolk
Area: Walpole Heights
Style: Townhouse

Full baths: 2.0
Half baths: 1.0
Garages: 1
List date: 3/19/20

Updated: Apr 2, 2020 2:09 PM
List Price: \$645,000
Orig list price: \$645,000

High: Walpole
Middle: Johnson
Elementary: Fisher

Features

Appliances: Range, Dishwasher, Disposal, Microwave, Refrigerator, Washer, Dryer

Building Features: Public Transportation, Shopping, Swimming Pool, Park, Walk/Jog Trails, Medical Facility, Bike Path, Highway Access, House of Worship, Private School, Public School, T-Station

Cooling Zones: 2

Construction Materials: Frame

Cooling: Central Air

Energy Features: Insulated Windows

Exterior Features: Deck

Garage: Attached, Garage Door Opener, Side Entry

Fireplaces Total: 1

Flooring: Wood, Tile

Heat Zones: 2

Hot Water: Tank

Heating: Forced Air, Gas

Living Area Source: TARGET:PR

Open Parking Spaces: 4

Parking Features: Off-Street, Paved Driveway

Roof: Asphalt/Fiberglass Shingles

Rooms Total: 9

Senior Community Yn: false

Sewer: City/Town Sewer

Tax Annual Amount: 7177.0

Tax Assessed Value: 478800

Tax Book Number: 34942

Tax Parcel Letter: M:00018 B:00182 L:00002

Tax Year: 2020

Zoning: R

Utilities: for Gas Range, for Gas Dryer, Washer Hookup

Water Source: City/Town Water

Waterfront Yn: false

Tracy Connell

Wall Street Realty Group
 Cell: 5087285996

tracy@wallstreetrealtygroup.com | www.wallstreetrealtygroup.com

Remarks

VIRTUAL TOUR. Easy to view how this beautiful townhouse feels like a single family home! First floor boasts an open floor plan, with gleaming hardwood floors, a large living room with a corner gas fireplace, a generous kitchen/dining combo, with french doors to a private deck and a huge, level backyard. There also is a walk-in pantry and 1/2 bath, plus interior access to a one car garage. Head upstairs to three well proportioned bedrooms: the master suite has a big walk-in closet and a stunning bathroom, while the other two bedrooms share a full bathroom. Not to be missed is the third floor, which is perfect for a home office (or two), a play room, or an extra bedroom. Rounding out this wonderful home is the full basement, with laundry, a climbing wall, and plenty of storage. A short stroll to the commuter rail to Boston and the bus line at the end of the street make this house the perfect location. Please call for private showings!

Tracy Connell

Wall Street Realty Group

Cell: 5087285996

tracy@wallstreetrealtygroup.com | www.wallstreetrealtygroup.com

267 Plimpton St 267

Walpole, MA 02081

MLS #72635618

\$645,000

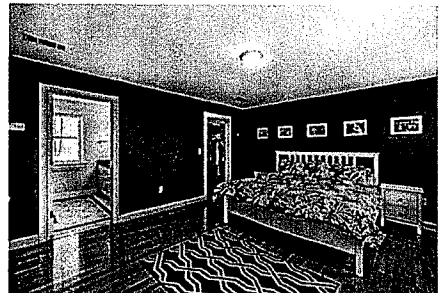
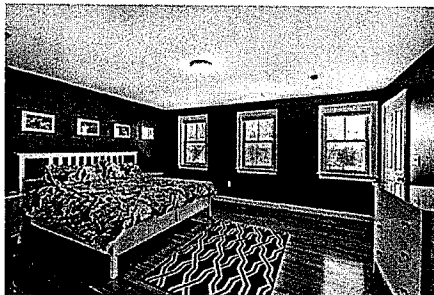
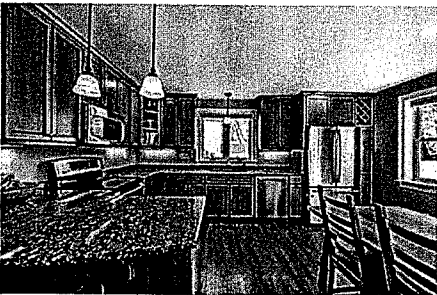
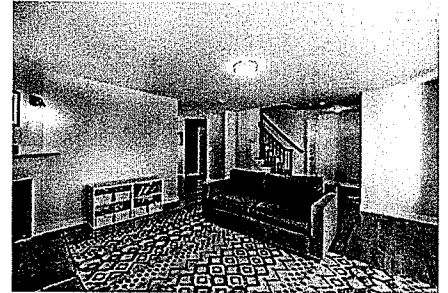
ACTIVE 3/19/20

3 Beds 3.00 Baths

Year Built 2007

2,494 Sq. Ft. (\$259 / sqft)

Days on market: 18



Tracy Connell

Wall Street Realty Group

Cell: 5087285996

tracy@wallstreetrealtygroup.com | www.wallstreetrealtygroup.com

1408 Pennington Drive 1408

Walpole, MA 02081

MLS #72575644

\$528,850

ACTIVE 10/4/19

2 Beds 2.00 Baths

Year Built 2020

1,325 Sq. Ft. (\$399 / sqft)

Days on market: 185



Details

Prop Type: Low-Rise

County: Norfolk

Style: Low-Rise

Full baths: 2.0

Garages: 1

List date: 10/4/19

Updated: Mar 17, 2020 10:18 AM

List Price: \$528,850

Orig list price: \$486,900

Features

Appliances: Range, Dishwasher, Microwave, Washer, Dryer

Association Fee: 418

Association Fee Includes: Water, Sewer, Master Insurance, Elevator, Exterior Maintenance, Road Maintenance, Landscaping, Snow Removal, Walking/Jogging Trails, Refuse Removal, TARGET:9

Building Features: Public Transportation, Shopping, Park, Walk/Jog Trails, Golf Course, Medical Facility, Conservation Area, House of Worship, T-Station

Cooling Zones: 1

Construction Materials: Stone/Concrete, Timber Frame

Cooling: Central Air, Individual, Unit Control

Energy Features: Insulated Windows, Insulated Doors, Prog. Thermostat

Exterior Features: Balcony, Gazebo

Garage: Under, Deeded, Insulated

Flooring: Tile, Wall to Wall Carpet, Engineered Hardwood

Heat Zones: 1

Hot Water: Natural Gas, Tankless

Heating: Central Heat, Gas, Individual, Unit Control, Hydro Air

Living Area Source: Owner

Open Parking Spaces: 2

Parking Features: Off-Street, Common

Roof: Rubber, Asphalt/Composition Shingles

Rooms Total: 5

Senior Community Yn: true

Sewer: City/Town Sewer

Tax Annual Amount: 14.99

Tax Book Number: 0

Tax Year: 2020

Zoning: Res

Utilities: for Electric Range, for Electric Oven, for Electric Dryer, Washer Hookup, Icemaker Connection

Water Source: City/Town Water

Tracy Connell

Wall Street Realty Group
Cell: 5087285996

tracy@wallstreetrealtygroup.com | www.wallstreetrealtygroup.com

Waterfront Yn: false

Remarks

New Construction! Condominium Community ~ Pennington Crossing! This 1,325 SF single level top floor 2 bedroom home features an open eat-in granite kitchen, formal dining room, large living room w/private balcony overlooking trees, spacious master suite two walk-in closets and full bath with walk-in shower, laundry room with full sized side by side washer & dryer, hardwood flooring. Deeded underground garage parking and more! Quaint community walking distance to downtown and commuter rail. Close to all major highways, recreation & more! Zoned 55+ community

Tracy Connell

Wall Street Realty Group

Cell: 5087285996

tracy@wallstreetrealtygroup.com | www.wallstreetrealtygroup.com

1408 Pennington Drive 1408

Walpole, MA 02081

MLS #72575644

\$528,850

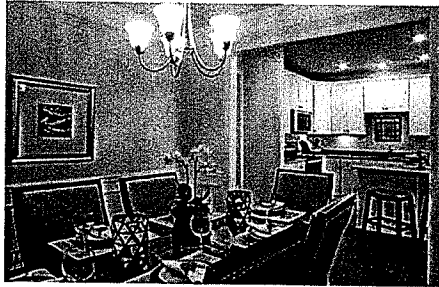
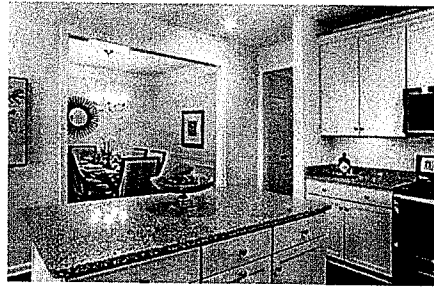
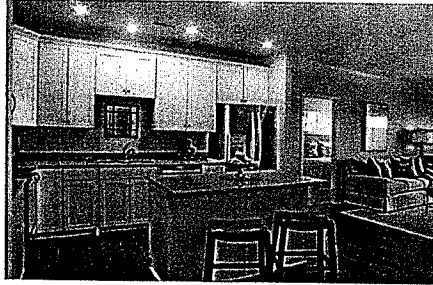
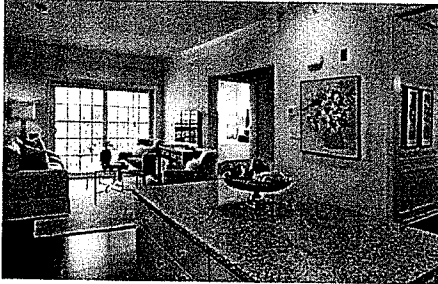
ACTIVE 10/4/19

2 Beds 2.00 Baths

Year Built 2020

1,325 Sq. Ft. (\$399 / sqft)

Days on market: 185

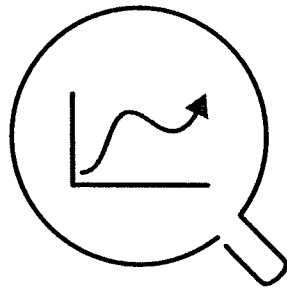


Tracy Connell

Wall Street Realty Group

Cell: 5087285996

tracy@wallstreetrealtygroup.com | www.wallstreetrealtygroup.com



Analysis

Tracy Connell

Wall Street Realty Group

Comparable Property Statistics

S Sold Listings

HIGHEST PRICE	\$603,000	AVG PRICE / SQFT	\$287
AVERAGE PRICE	\$573,780	AVG DOM	61
LOWEST PRICE	\$545,000	SOLD LISTINGS	5

C Cancelled Listings

HIGHEST PRICE	\$600,000	AVG PRICE / SQFT	\$354
AVERAGE PRICE	\$566,987	AVG DOM	107
LOWEST PRICE	\$549,965	CANCELLED LISTINGS	3

P Pending Listings

HIGHEST PRICE	\$599,000	AVG PRICE / SQFT	\$370
AVERAGE PRICE	\$566,230	AVG DOM	98
LOWEST PRICE	\$534,550	PENDING LISTINGS	4

X Expired Listings

HIGHEST PRICE	\$639,900	AVG PRICE / SQFT	\$331
AVERAGE PRICE	\$574,883	AVG DOM	65
LOWEST PRICE	\$534,755	EXPIRED LISTINGS	3

Tracy Connell

Wall Street Realty Group

Cell: 5087285996

tracy@wallstreetrealtygroup.com | www.wallstreetrealtygroup.com

A Active Listings

HIGHEST PRICE **\$645,000**

AVG PRICE / SQFT **\$355**

AVERAGE PRICE **\$563,723**

AVG DOM **202**

LOWEST PRICE **\$528,850**

ACTIVE LISTINGS **5**

Tracy Connell

Wall Street Realty Group

Cell: 5087285996

tracy@wallstreetrealtygroup.com | www.wallstreetrealtygroup.com

Sold Property Analysis

Averages

96.3%

Homes sold for an average of 96.3% of their list price.

61

Days on market

It took an average of 61 days for a home to sell.

Analysis

ADDRESS	LIST PRICE	SOLD PRICE	% OF LIST PRICE	DOM	\$ PER SQFT
12 Tilton Court 12	\$649,900	\$589,000	90.6%	61	\$302
12 Delcor Dr 12	\$559,900	\$551,900	98.6%	6	\$298
12 Delcor Drive 12	\$539,900	\$545,000	100.9%	19	\$295
9 Rose Court Way 9	\$629,000	\$603,000	95.9%	68	\$282
8 Rose Court Way 8	\$600,000	\$580,000	96.7%	155	\$256
Averages	\$595,740	\$573,780	96.3%	61	\$287

Tracy Connell

Wall Street Realty Group

Cell: 5087285996

tracy@wallstreetrealtygroup.com | www.wallstreetrealtygroup.com