



HOWARD STEIN HUDSON

114 Turnpike Road, Suite 2C  
Chelmsford, MA 01824  
www.hshassoc.com

PREPARED FOR:

55 BH LLC  
6 LYBERRY WAY, SUITE 203  
WESTFORD, MA 01886

PROPOSED MULTIFAMILY  
DEVELOPMENT  
SUMMER STREET  
WALPOLE, MA

REVISIONS:

NO	BY	DATE	DESCRIPTION
1	PB	5/1/20	REV. SITE PLANS
2	PB	6/29/20	REV. 200' GRADING
3	PB	9/14/20	REV. DETAILS
4	PB	10/14/20	REV. LAYOUT

SITE  
PLAN

TRUCK TURNING  
PLAN 1 OF 5

DATE: JANUARY 10, 2020

PROJECT NUMBER: 19097

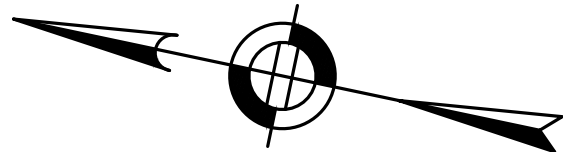
DESIGNED BY: PB/KE/KF

DRAWN BY: PB/KF

CHECKED BY: KE

C.59

SHEET 59 OF 88



n/i  
HUGHES BAKER  
PROCESS SYSTEMS INC.  
ASSESSOR'S PARCEL 52-78  
100 NEPOSE STREET

n/i TOWN OF WALPOLE  
ASS. PARCEL 52-15  
CEDAR SWAMP

EXISTING RAILROAD TRACKS

DOG PARK  
COMPACTOR

MAINTENANCE  
BUILDING

PROPOSED DRIVEWAY-C'

PROPOSED  
FIRE HYDRANT  
(TYP)

L SHAPED 108  
UNIT BUILDING  
54 SPACES

FIRE TRUCK TIRE  
MOVEMENTS  
(TYP)

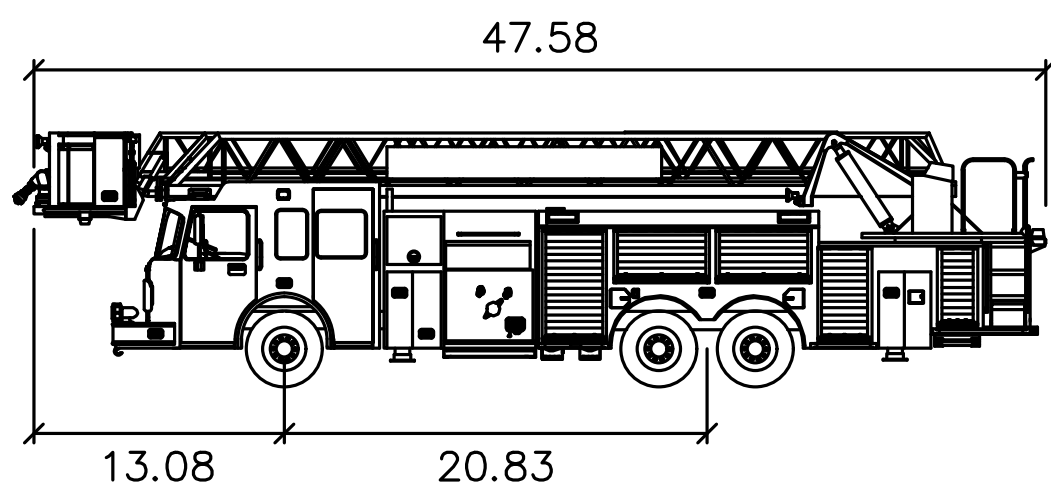
VEHICLE OVERHANG  
(TYP)

CLUBHOUSE

MATCHLINE SHEET 59  
MATCHLINE SHEET 61

TRUCK TURNING NOTES:

1. TRUCK TURNING MOVEMENTS ARE BASED ON THE LARGEST WALPOLE FIRE TRUCK TURNING APPARATUS AS PROVIDED BY THE FIRE DEPARTMENT.
2. TRUCK TURNING MOVEMENTS SIMULATED USING AUTODESK AUTOTURN 10 FOR CIVIL 3D 2020.
3. RED LINES TO REPRESENT THE VEHICLES TIRE MOVEMENTS AND GREEN LINES TO REPRESENT THE VEHICLE FRONT AND REAR OVERHANG.



Fire-Walpole

feet

Width : 8.33  
Track : 7.03  
Lock to Lock Time : 6.0  
Steering Angle : 39.2



SCALE IN FEET

CEDAR SWAMP BROOK  
(PERENNIAL STREAM)

n/i TOWN OF WALPOLE  
ASS. PARCEL 52-15  
CEDAR SWAMP

MATCHLINE SHEET 59  
MATCHLINE SHEET 60





HOWARD STEIN HUDSON

114 Turnpike Road, Suite 2C  
Chelmsford, MA 01824  
www.hshassoc.com

PREPARED FOR:

55 BH LLC  
6 LYBERTY WAY, SUITE 203  
WESTFORD, MA 01886

PROPOSED MULTIFAMILY  
DEVELOPMENT  
SUMMER STREET  
WALPOLE, MA

REVISIONS:

NO	BY	DATE	DESCRIPTION
1	PB	5/1/20	REV. SITE PLANS
2	PB	6/29/20	REV. 200' GRADING
3	PB	9/14/20	REV. DETAILS
4	PB	10/14/20	REV. LAYOUT

SITE  
PLAN

TRUCK TURNING  
PLAN 2 OF 5

DATE: JANUARY 10, 2020

PROJECT NUMBER: 19097

DESIGNED BY: PB/KE/KF

DRAWN BY: PB/KF

CHECKED BY: KE

C.60

SHEET 60 OF 88

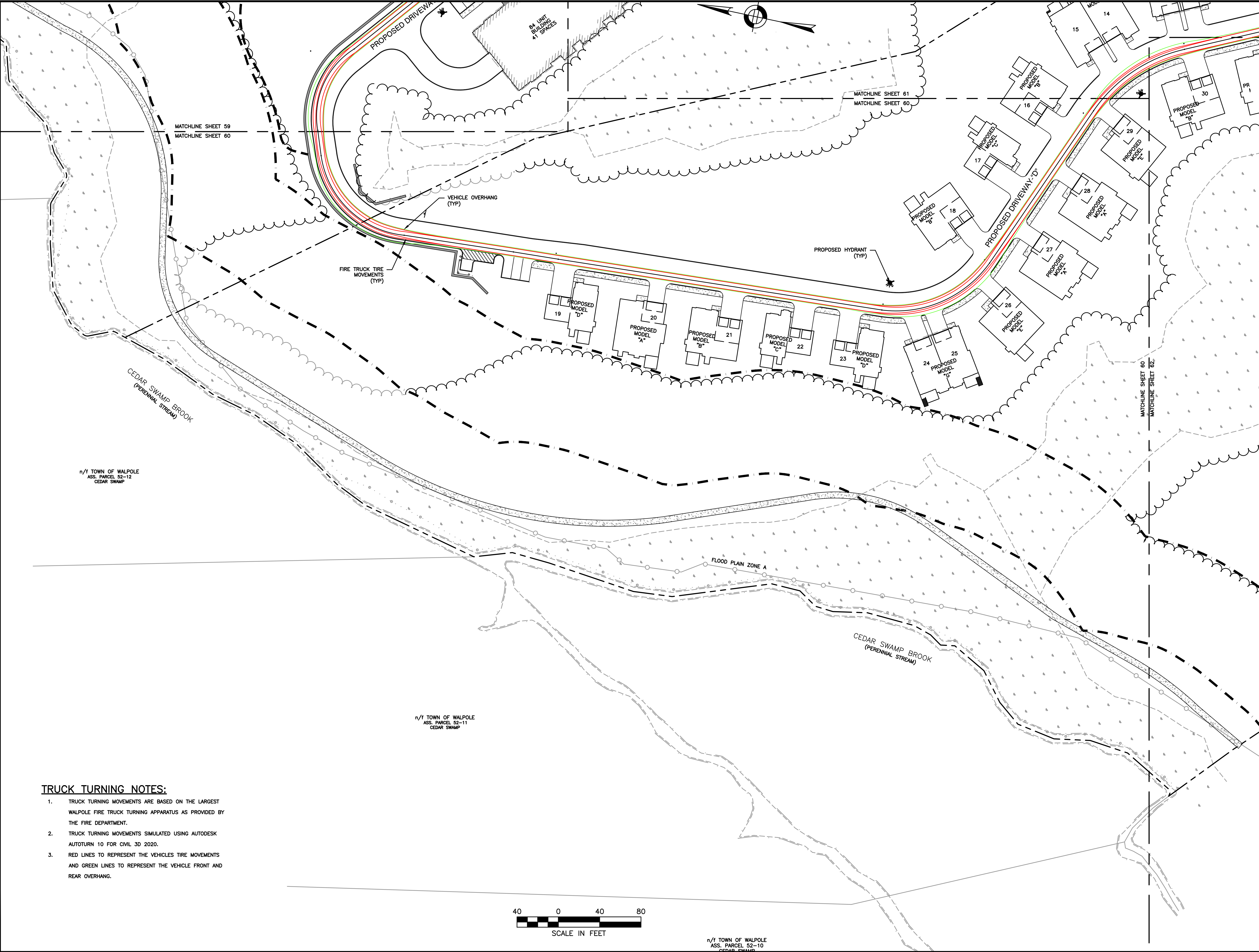
1/13/2020M:\19097\CURRENT\19097 - Vehicle Tracking Plan.dwg  
Patrick Cople

TRUCK TURNING NOTES:

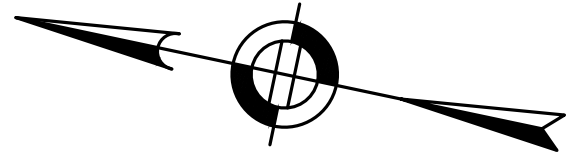
1. TRUCK TURNING MOVEMENTS ARE BASED ON THE LARGEST WALPOLE FIRE TRUCK TURNING APPARATUS AS PROVIDED BY THE FIRE DEPARTMENT.
2. TRUCK TURNING MOVEMENTS SIMULATED USING AUTODESK AUTOTURN 10 FOR CIVIL 3D 2020.
3. RED LINES TO REPRESENT THE VEHICLES TIRE MOVEMENTS AND GREEN LINES TO REPRESENT THE VEHICLE FRONT AND REAR OVERHANG.



n/t TOWN OF WALPOLE  
ASS. PARCEL 52-10  
CEDAR SWAMP







RUCADUC  
POND

### TRUCK TURNING NOTES:

1. TRUCK TURNING MOVEMENTS ARE BASED ON THE LARGEST WALPOLE FIRE TRUCK TURNING APPARATUS AS PROVIDED BY THE FIRE DEPARTMENT.
2. TRUCK TURNING MOVEMENTS SIMULATED USING AUTODESK AUTOTURN 10 FOR CIVIL 3D 2020.
3. RED LINES TO REPRESENT THE VEHICLES TIRE MOVEMENTS AND GREEN LINES TO REPRESENT THE VEHICLE FRONT AND REAR OVERHANG.



**HOWARD STEIN HUDSON**

114 Turnpike Road, Suite 2C  
Chelmsford, MA 01824  
www.hshassoc.com

#### PREPARED FOR:

55 BH LLC  
6 LYBERRY WAY, SUITE 203  
WESTFORD, MA 01886

## PROPOSED MULTIFAMILY DEVELOPMENT SUMMER STREET WALPOLE, MA

#### REVISIONS:

NO	BY	DATE	DESCRIPTION
1	PB	5/1/20	REV. SITE PLANS
2	PB	6/29/20	REV. 200' GRADING
3	PB	9/14/20	REV. DETAILS
4	PB	10/14/20	REV. LAYOUT

SITE  
PLAN

TRUCK TURNING  
PLAN 3 OF 5

DATE: JANUARY 10, 2020

PROJECT NUMBER: 19097

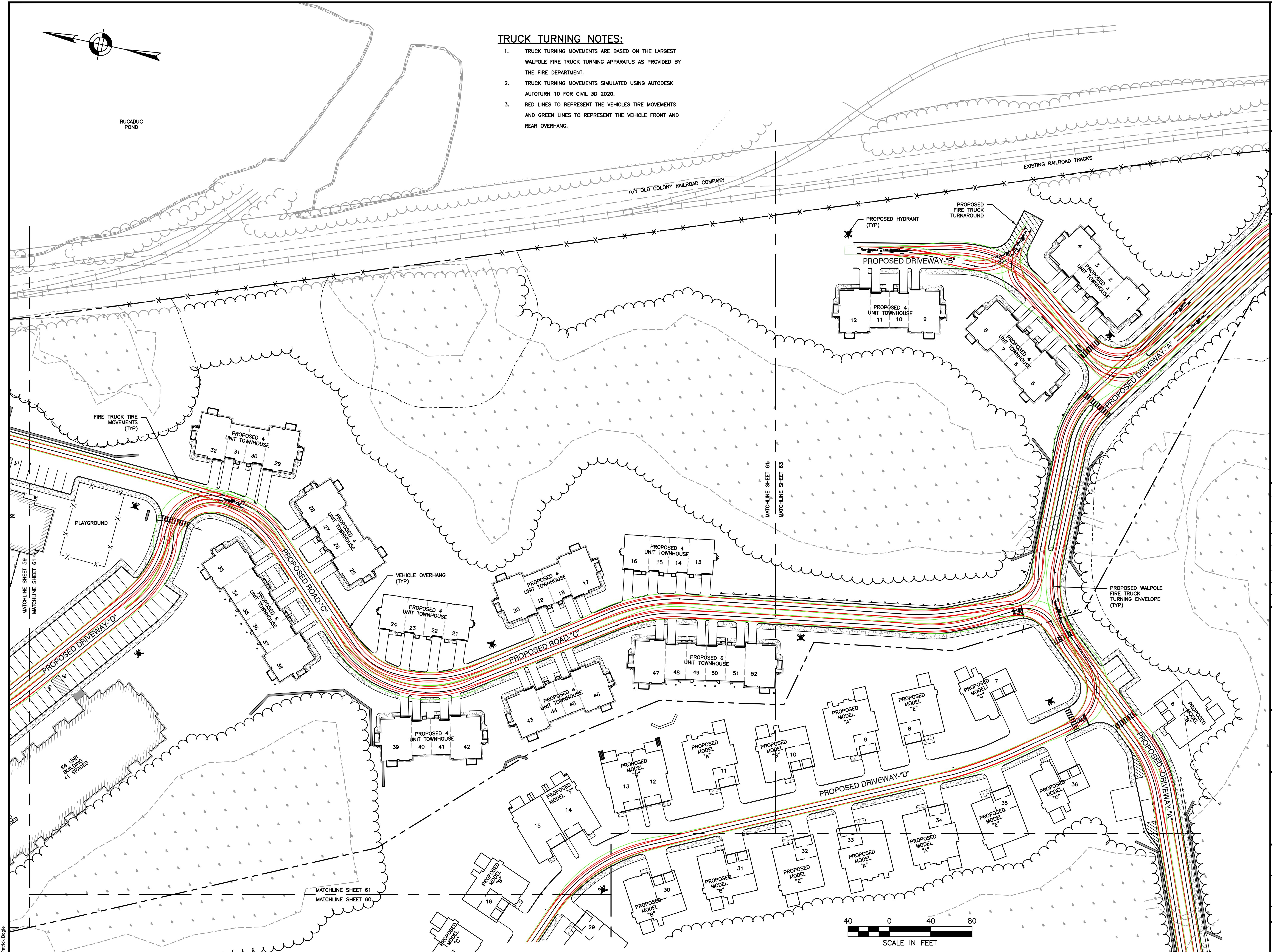
DESIGNED BY: PB/KE/KF

DRAWN BY: PB/KF

CHECKED BY: KE

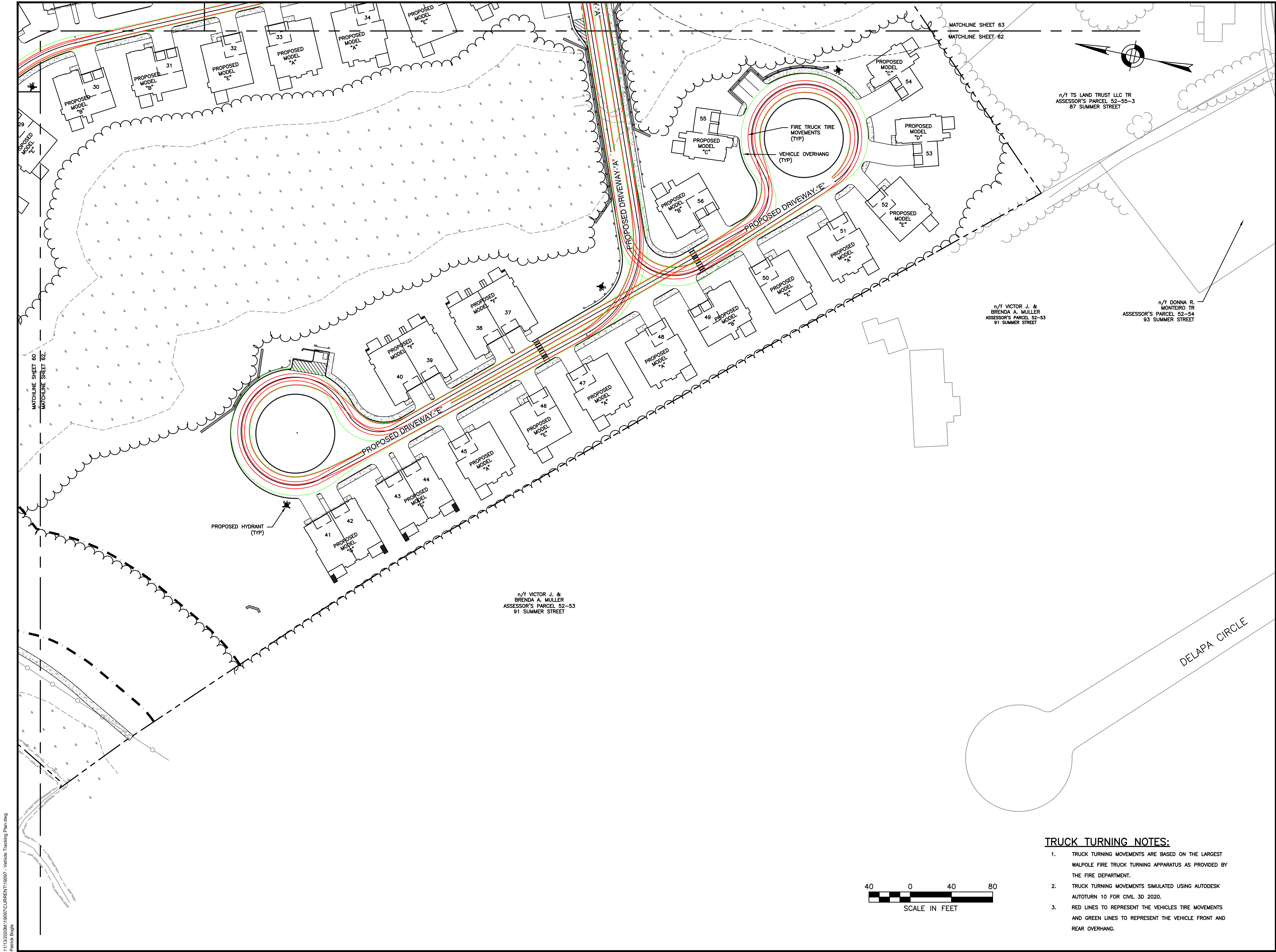
C.61

SHEET 61 OF 88





1/13/2020\\119097\\CURRENT\\119097 - Vehicle Tracking Plan.dwg  
Patrick Logie



**HOWARD STEIN HUDSON**

114 Turnpike Road, Suite 2C  
Chelmsford, MA 01824  
www.hshassoc.com

**PREPARED FOR:**

55 BH LLC  
6 LYBERTY WAY, SUITE 203  
WESTFORD, MA 01886

**PROPOSED MULTIFAMILY  
DEVELOPMENT  
SUMMER STREET  
WALPOLE, MA**

**REVISIONS:**

NO	BY	DATE	DESCRIPTION
1	PB	5/1/20	REV. SITE PLANS
2	PB	6/29/20	REV. 200' GRADING
3	PB	9/14/20	REV. DETAILS
4	PB	10/14/20	REV. LAYOUT

**SITE  
PLAN**

**TRUCK TURNING  
PLAN 4 OF 5**

**TRUCK TURNING NOTES:**

- TRUCK TURNING MOVEMENTS ARE BASED ON THE LARGEST WALPOLE FIRE TRUCK TURNING APPARATUS AS PROVIDED BY THE FIRE DEPARTMENT.
- TRUCK TURNING MOVEMENTS SIMULATED USING AUTODESK AUTOTURN 10 FOR CIVIL 3D 2020.
- RED LINES TO REPRESENT THE VEHICLES TIRE MOVEMENTS AND GREEN LINES TO REPRESENT THE VEHICLE FRONT AND REAR OVERHANG.



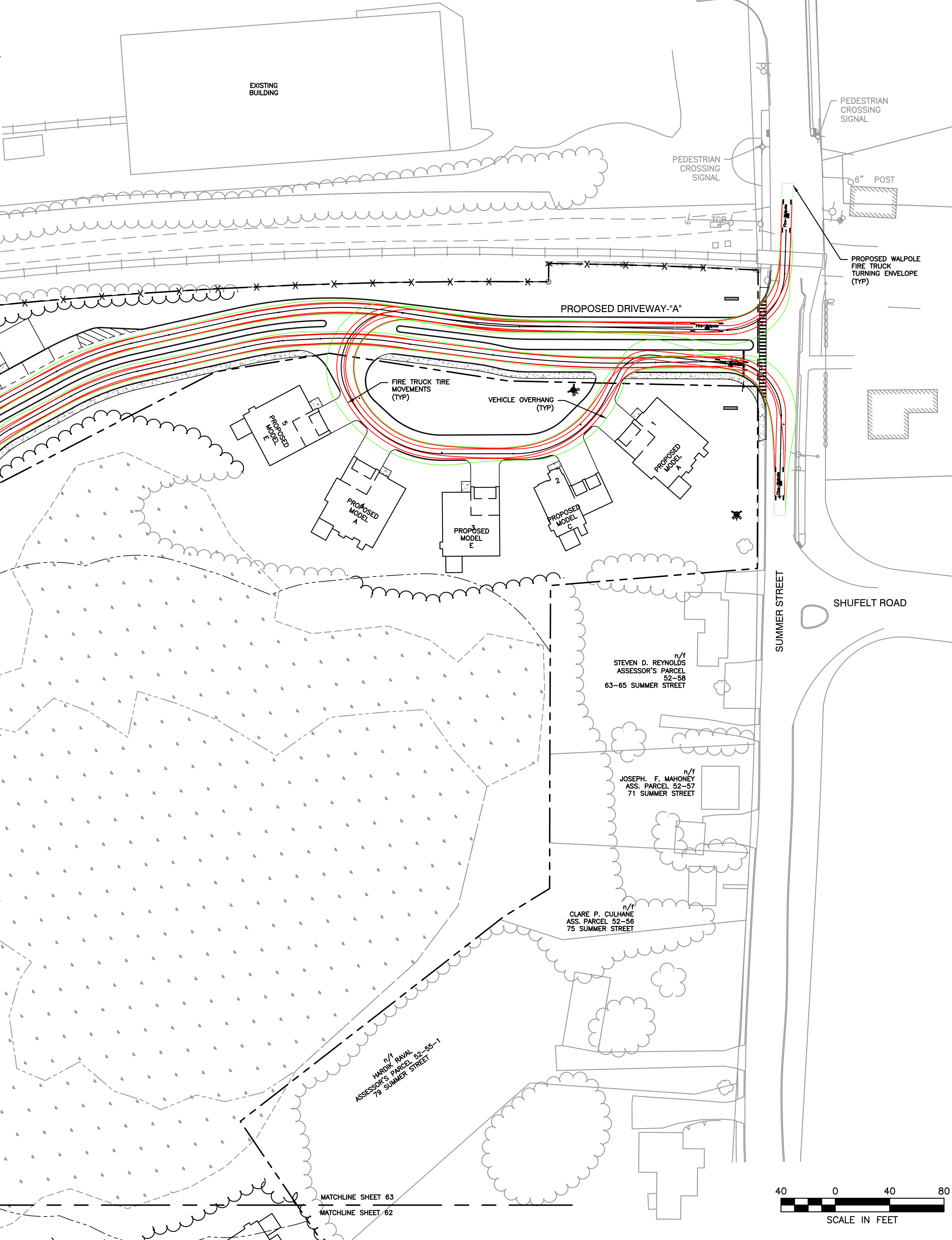
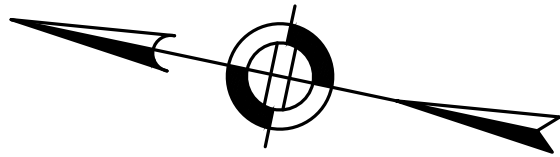
DATE:	JANUARY 10, 2020
PROJECT NUMBER:	19097
DESIGNED BY:	PB/KE/KF
DRAWN BY:	PB/KF
CHECKED BY:	KE
	C.62



TRUCK TURNING NOTES:

1. TRUCK TURNING MOVEMENTS ARE BASED ON THE LARGEST WALPOLE FIRE TRUCK TURNING APPARATUS AS PROVIDED BY THE FIRE DEPARTMENT.
2. TRUCK TURNING MOVEMENTS SIMULATED USING AUTODESK AUTOTURN 10 FOR CIVIL 3D 2020.
3. RED LINES TO REPRESENT THE VEHICLES TIRE MOVEMENTS AND GREEN LINES TO REPRESENT THE VEHICLE FRONT AND REAR OVERHANG.

n/f  
DICKRAN BABIGIAN TR  
ASSESSOR'S PARCEL  
52-62  
49 SUMMER STREET



**HOWARD STEIN HUDSON**  
114 Turnpike Road, Suite 2C  
Chelmsford, MA 01824  
www.hshassoc.com

PREPARED FOR:  
55 BH LLC  
6 LYBERRY WAY, SUITE 203  
WESTFORD, MA 01886

PROPOSED MULTIFAMILY  
DEVELOPMENT  
SUMMER STREET  
WALPOLE, MA

REVISIONS:			
NO	BY	DATE	DESCRIPTION
1	PB	5/1/20	REV. SITE PLANS
2	PB	6/29/20	REV. 200' GRADING
3	PB	9/14/20	REV. DETAILS
4	PB	10/14/20	REV. LAYOUT

SITE  
PLAN

TRUCK TURNING  
PLAN 5 OF 5

DATE:	JANUARY 10, 2020
PROJECT NUMBER:	19097
DESIGNED BY:	PB/KE/KF
DRAWN BY:	PB/KF
CHECKED BY:	KE

C.63

SHEET 63 OF 88

