

**Figure 6a**

**Shallow Groundwater  
Elevation Contours  
March 2014**

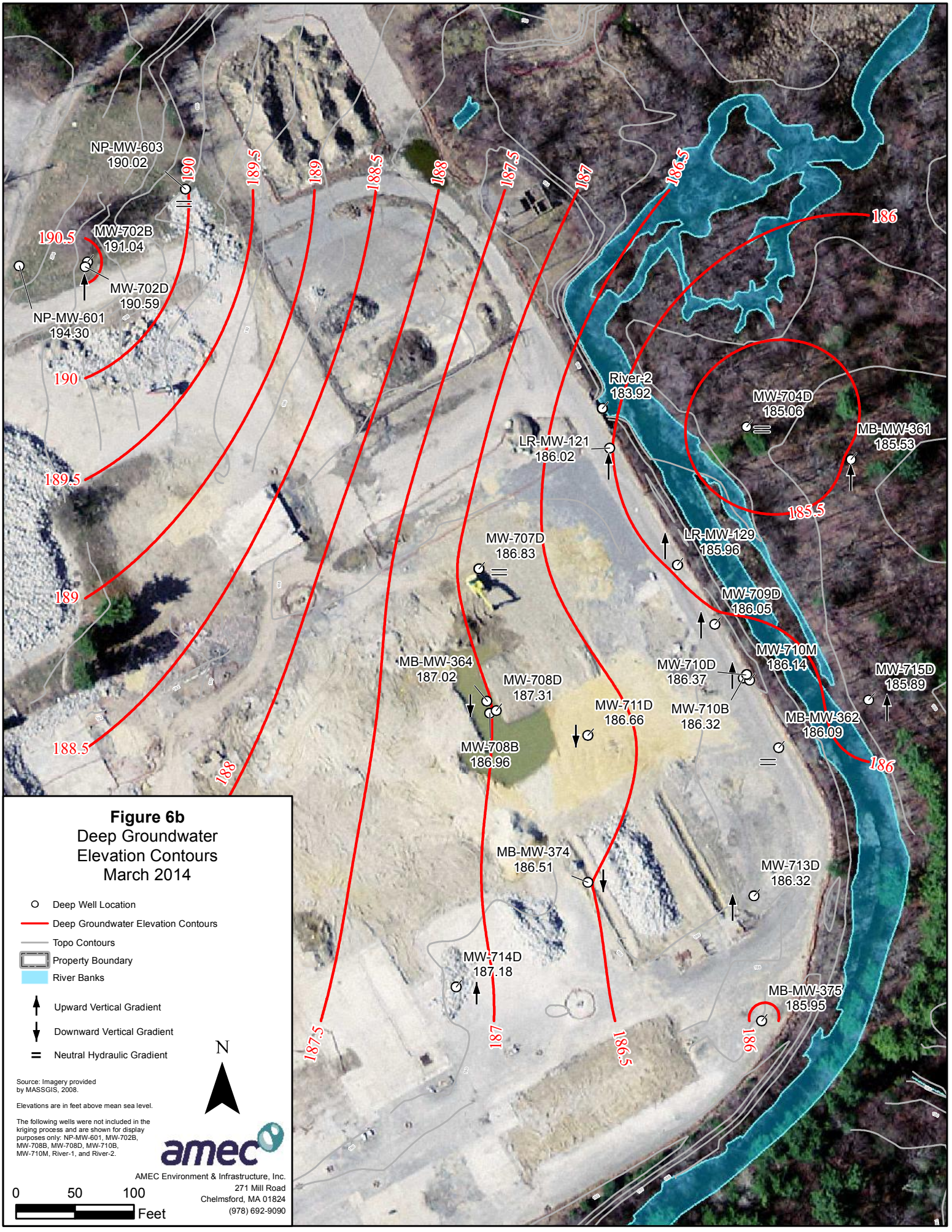
- Shallow Well Location
- Shallow Groundwater Elevation Contours
- Topo Contours
- ▭ Property Boundary
- ▭ River Banks
- ↑ Upward Vertical Gradient
- ↓ Downward Vertical Gradient
- = Neutral Hydraulic Gradient

Source: Imagery provided by MASSGIS, 2008.  
Elevations are in feet above mean sea level.



AMEC Environment & Infrastructure, Inc.  
271 Mill Road  
Chelmsford, MA 01824  
(978) 692-9090





**Figure 6b**  
**Deep Groundwater**  
**Elevation Contours**  
**March 2014**

- Deep Well Location
- Deep Groundwater Elevation Contours
- Topo Contours
- ▭ Property Boundary
- ▭ River Banks
- ↑ Upward Vertical Gradient
- ↓ Downward Vertical Gradient
- = Neutral Hydraulic Gradient

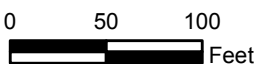
Source: Imagery provided by MASSGIS, 2008.

Elevations are in feet above mean sea level.

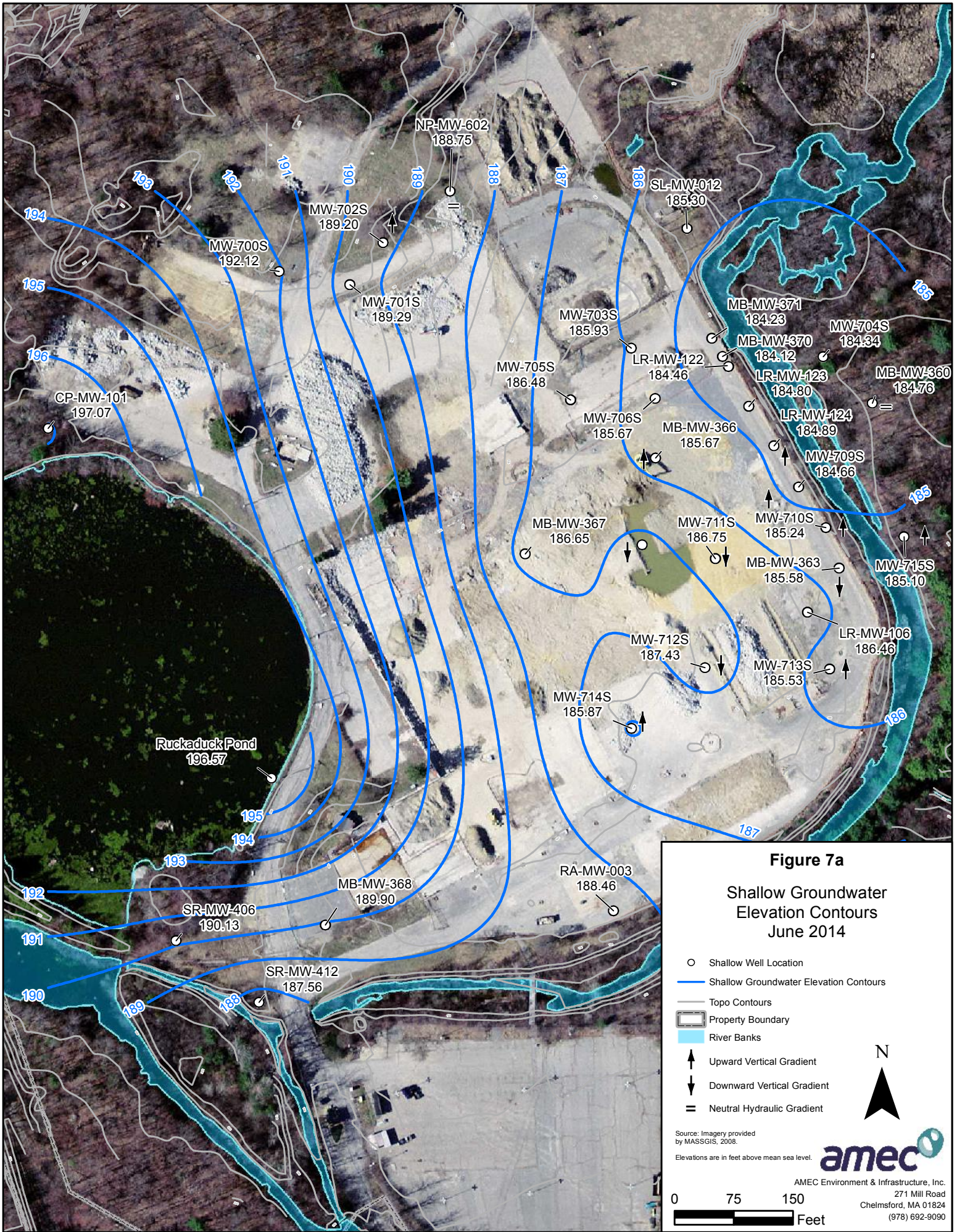
The following wells were not included in the kriging process and are shown for display purposes only: NP-MW-601, MW-702B, MW-708B, MW-708D, MW-710B, MW-710M, River-1, and River-2.



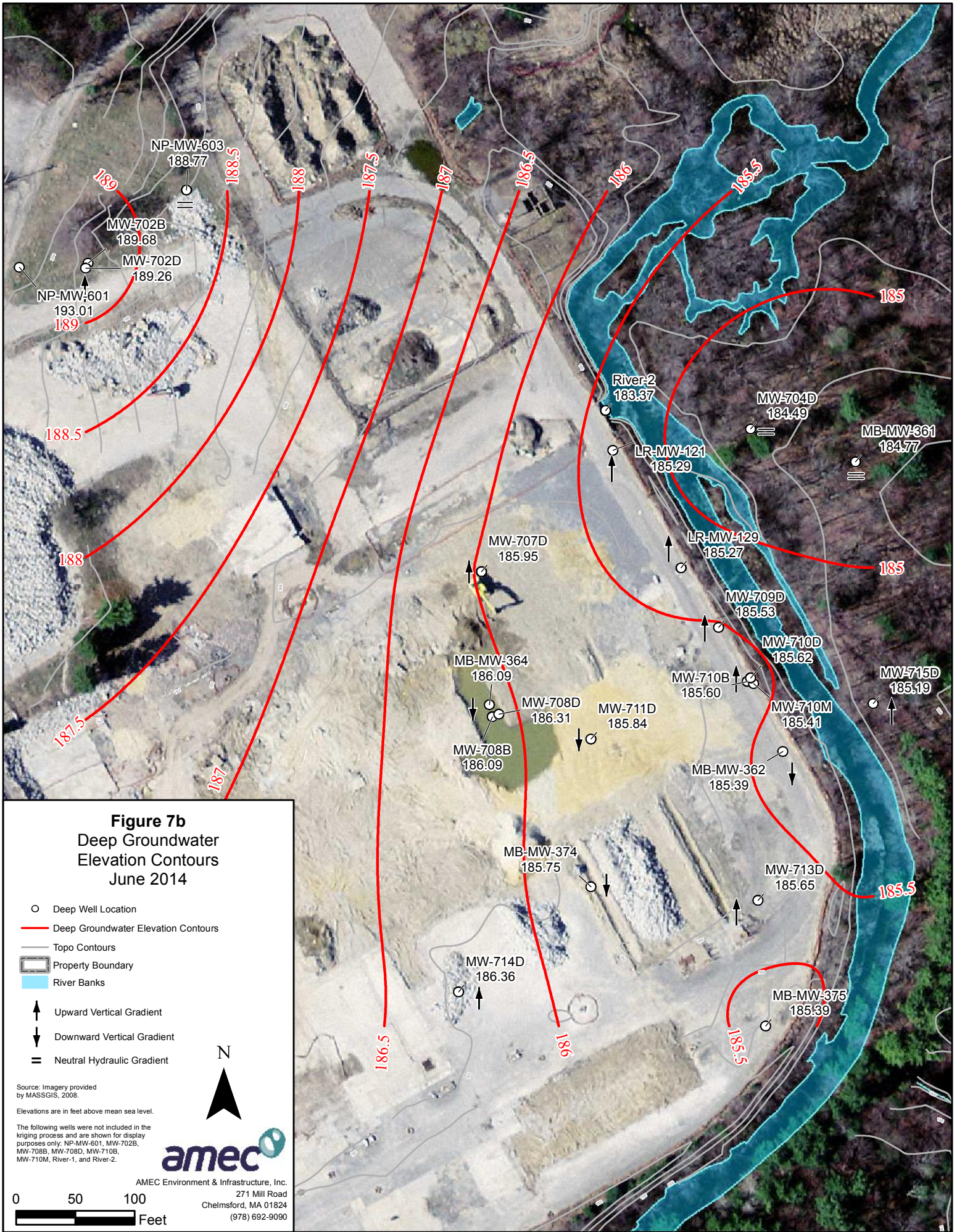
AMEC Environment & Infrastructure, Inc.  
 271 Mill Road  
 Chelmsford, MA 01824  
 (978) 692-9090











**Figure 7b**  
**Deep Groundwater**  
**Elevation Contours**  
**June 2014**

- Deep Well Location
- Deep Groundwater Elevation Contours
- Topo Contours
- ▭ Property Boundary
- ▭ River Banks
- ↑ Upward Vertical Gradient
- ↓ Downward Vertical Gradient
- = Neutral Hydraulic Gradient

Source: Imagery provided by MASSGIS, 2008.

Elevations are in feet above mean sea level.

The following wells were not included in the kriging process and are shown for display purposes only: NP-MW-501, MW-702B, MW-708S, MW-708D, MW-710S, MW-710M, River-1, and River-2.



AMEC Environment & Infrastructure, Inc.  
 271 Mill Road  
 Chelmsford, MA 01824  
 (978) 692-9090

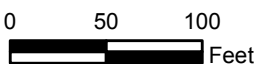
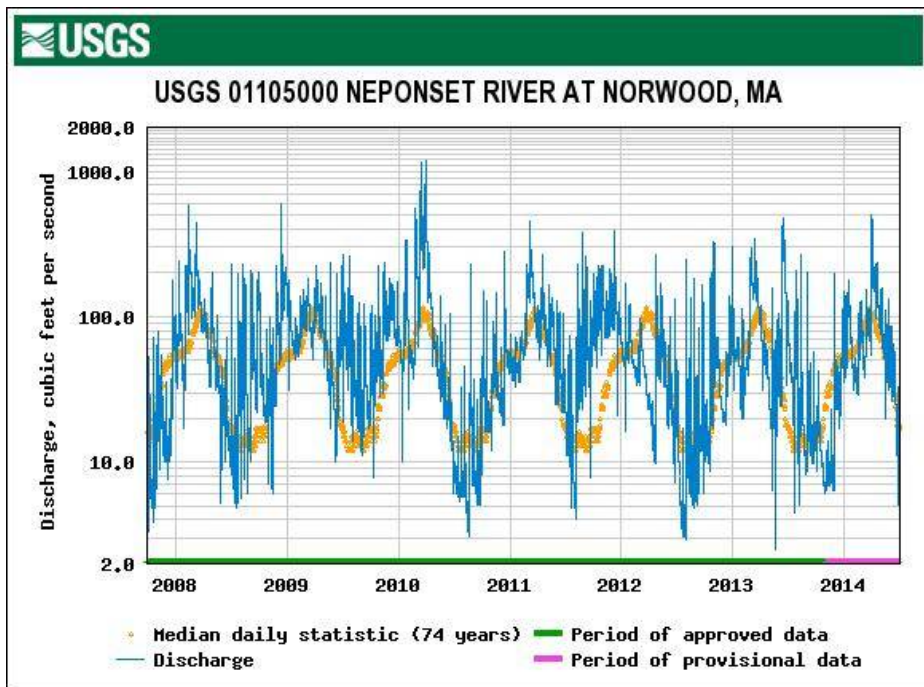
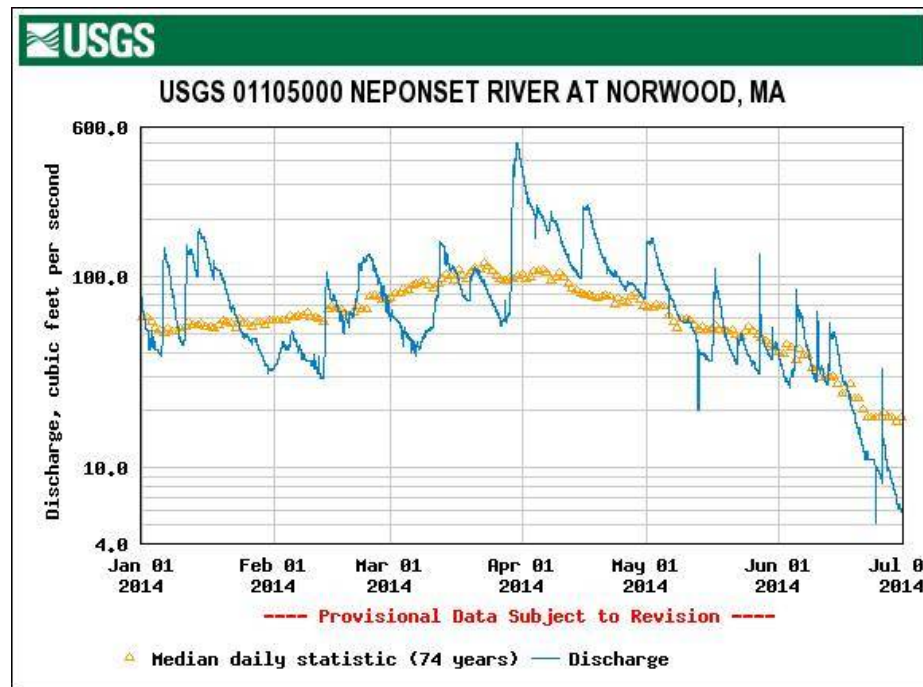




Figure 8. USGS Hydrographs of the Neponset River

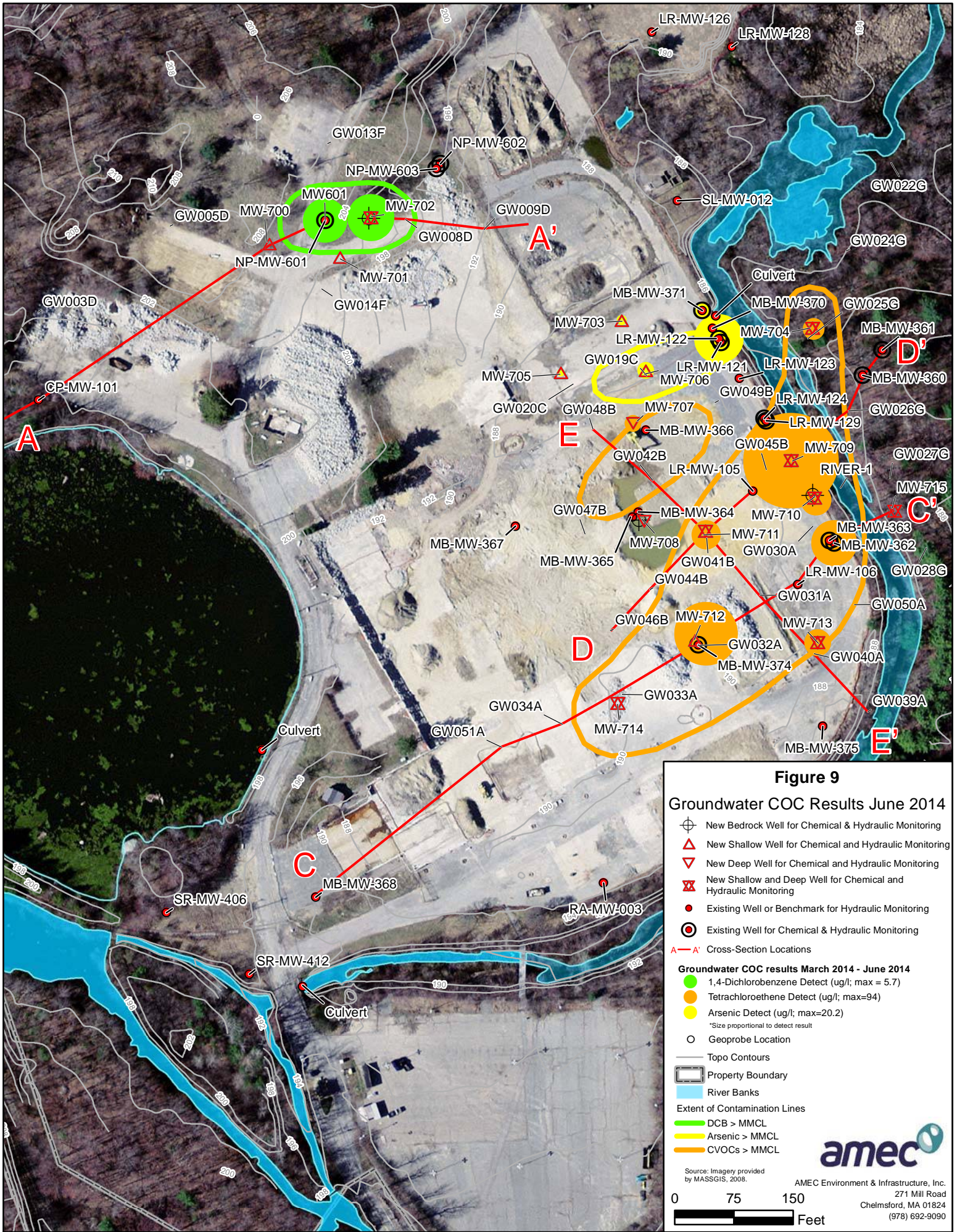


2008 to 2014 Daily Discharge



2014 Daily Discharge





**Figure 9**  
**Groundwater COC Results June 2014**

- ⊕ New Bedrock Well for Chemical & Hydraulic Monitoring
  - △ New Shallow Well for Chemical and Hydraulic Monitoring
  - ▽ New Deep Well for Chemical and Hydraulic Monitoring
  - ⊗ New Shallow and Deep Well for Chemical and Hydraulic Monitoring
  - Existing Well or Benchmark for Hydraulic Monitoring
  - ⊙ Existing Well for Chemical & Hydraulic Monitoring
  - A—A' Cross-Section Locations
- Groundwater COC results March 2014 - June 2014**
- 1,4-Dichlorobenzene Detect (ug/l; max = 5.7)
  - Tetrachloroethene Detect (ug/l; max=94)
  - Arsenic Detect (ug/l; max=20.2)
  - \*Size proportional to detect result
  - Geoprobe Location
- Topo Contours
  - ▭ Property Boundary
  - ▭ River Banks
- Extent of Contamination Lines
- ▭ DCB > MMCL
  - ▭ Arsenic > MMCL
  - ▭ CVOCs > MMCL

Source: Imagery provided by MASSGIS, 2008.

amec

AMEC Environment & Infrastructure, Inc.  
 271 Mill Road  
 Chelmsford, MA 01824  
 (978) 692-9090

0 75 150  
 Feet