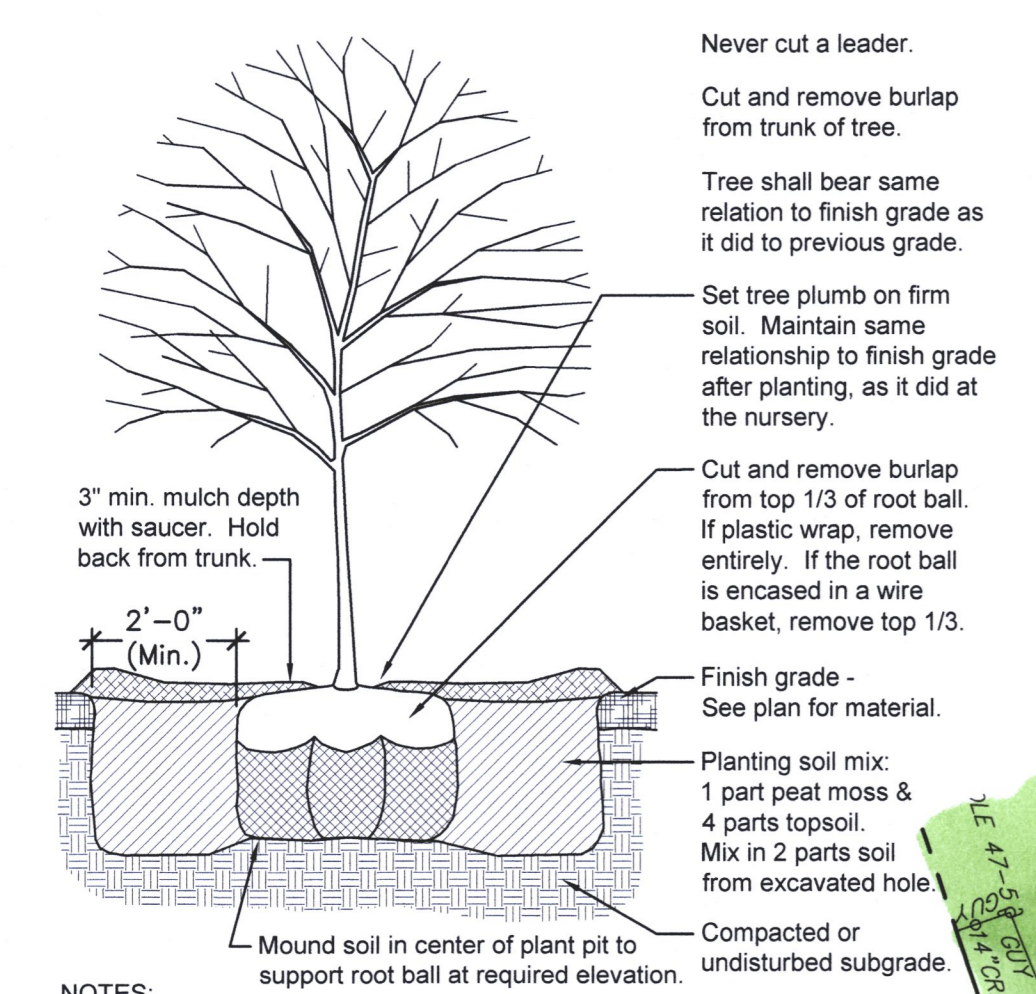


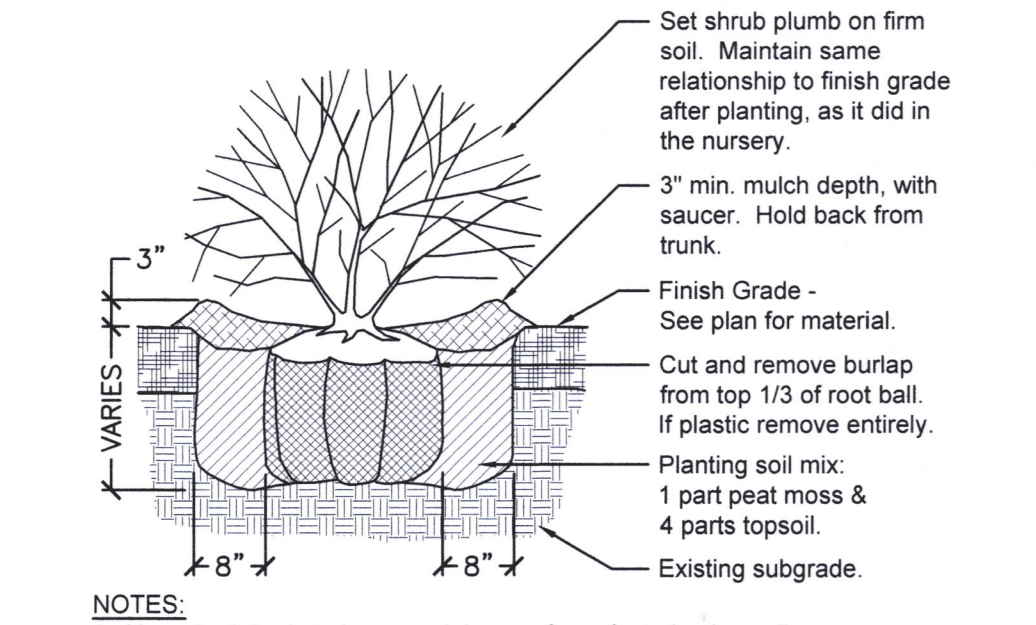
NOTES:  
 1. Flood saucer twice during the first 24-hours after planting.  
 2. Soak each tree twice weekly, for (3) weeks after fall planting.  
 3. Soak each tree twice weekly, during spring and summer planting.

**1 TYP. EVERGREEN TREE PLANTING**  
 Scale: 1/2" = 1'-0"



NOTES:  
 1. Soak each tree twice weekly, for (3) weeks after fall planting.  
 2. Soak each tree twice weekly, during spring and summer planting.  
 3. Contractor to provide a price for staking of each individual tree.

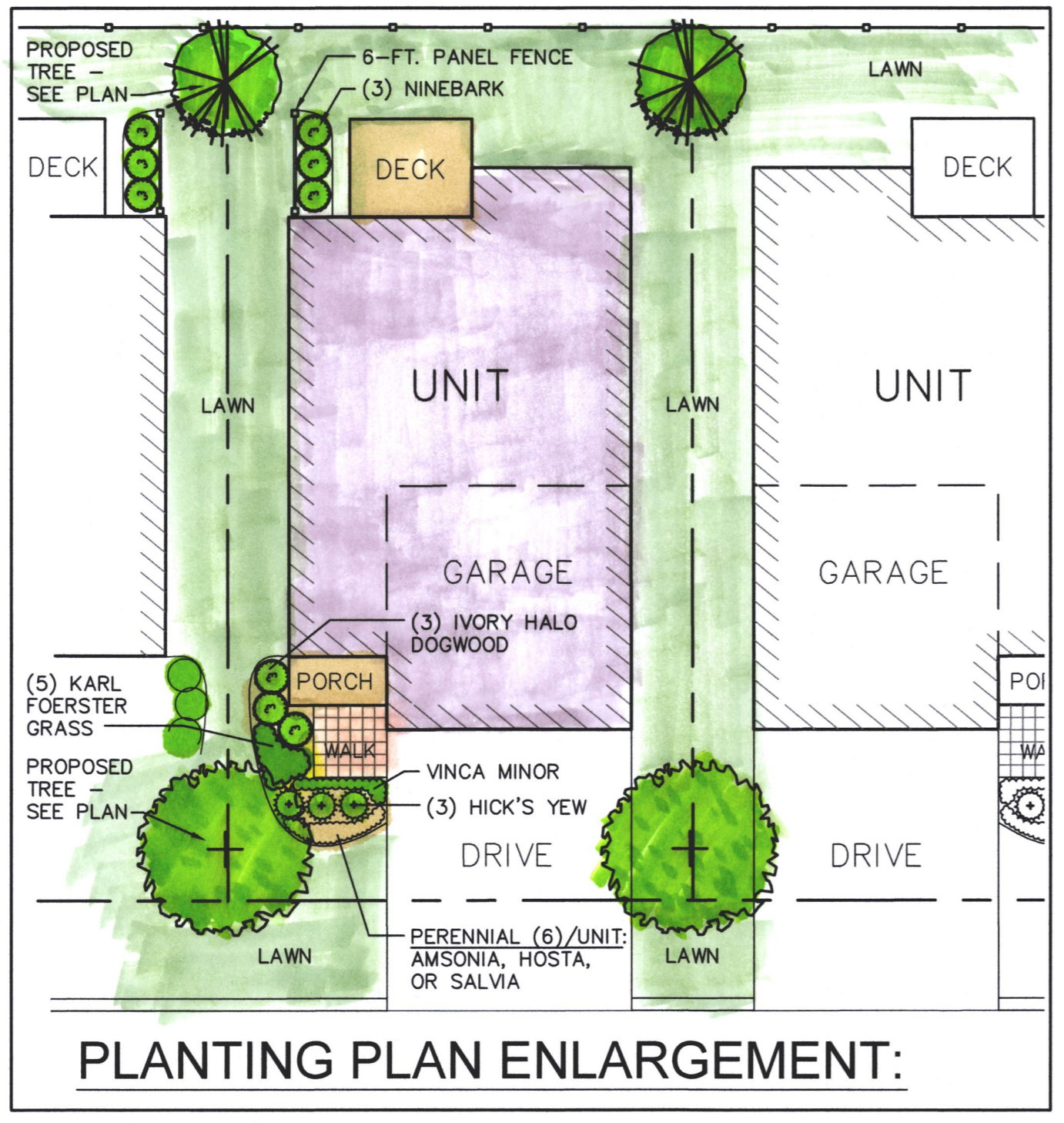
**2 TYP. DECIDUOUS TREE PLANTING**  
 Scale: 1/2" = 1'-0"



NOTES:  
 1. New shrub beds to have a minimum of one foot planting soil.  
 2. Shrubs to be full and bushy.

**3 TYPICAL SHRUB PLANTING**  
 Scale: 3/4" = 1'-0"

Call DIGSAFE, 1-888-344-7233, for location and marking of all utilities prior to any excavation. Private utilities may require additional marking and investigation.



**PLANTING PLAN ENLARGEMENT:**



**PLANTING LEGEND:**

- - Highbush Blueberry *Vaccinium corymbosum*
- ⊕ - Witchhazel *Hamamelis virginiana*
- ⊙ - Hazelnut *Corylus americana*
- - Maple-leaved Viburnum *Viburnum acerifolium*
- ⊗ - Flowering Dogwood *Cornus florida*
- - Serviceberry *Amelanchier canadensis*

PROPOSED SCREENING/PLANTING BUFFER PLANTS:  
 6'-8' Hgt. White Pines (*Pinus strobus*)  
 6'-8' Hgt. Norway Spruce (*Picea abies*)  
 Plant 2 Rows staggered at 10' O.C.

Note:  
 Shrubs will be planted in clusters of three (3) specimens of the same species at the locations shown, with minor deviations due to site conditions.

- PLANTING NOTES:**
- Trees and shrubs shall be uniform, full and bushy, and well branched specimen plants. All plants to be approved by the Landscape Architect.
  - Plants shall be balled and burlapped or container grown.
  - Plants to conform to the requirements established in 'American Standards For Nursery Stock', latest edition.
  - Plant beds to receive 3-inch minimum depth of shredded bark mulch.
  - Plant materials shall be guaranteed for 1-year after installation.

**PLANT LIST:**

SHADE TREES & ORNAMENTAL TREES				
Qty.	Sym.	Botanical Name	Common Name	Size
9	AR	<i>Acer rubrum</i> 'October Glory'	October Glory Red Maple	2.5 - 3" B&B
7	BN	<i>Betula nigra</i> 'Heritage'	Heritage River Birch	8' -10' clump
2	CF	<i>Cornus florida</i>	Florida Dogwood	2" caliper
6	GB	<i>Ginkgo biloba</i>	Maidenhair Tree	2.5 - 3" B&B
7	GBA	<i>Ginkgo biloba</i> 'Autumn Gold'	Autumn Gold Maidenhair Tree	2.5 - 3" B&B
2	HC	<i>Halesia carolina</i>	Silverbell	2" caliper
6	HP	<i>Hydrangea pan.</i> Tardiva- tree form	Tardiva Hydrangea Tree	15 gallon
6	LS	<i>Liquidambar styraciflua</i> 'Ward'	Ward American sweetgum	2.5 - 3" B&B
7	NS	<i>Nyssa sylvatica</i> 'Wild Fire'	Wild Fire Black Tupelo	2.5 - 3" B&B
3	QP	<i>Quercus palustris</i>	Pin Oak	2.5 - 3" B&B
9	QR	<i>Quercus rubra</i>	Red Oak	2.5 - 3" B&B
3	TD	<i>Taxodium distichum</i>	Bald Cypress	2.5" caliper
EVERGREEN TREES				
Qty.	Sym.	Botanical Name	Common Name	Size
12	JV	<i>Juniperus virginiana</i>	Eastern Redcedar	6 - 8' height
10	JVB	<i>Juniperus virginiana</i> 'Brodie'	Brodie Red Cedar	6 - 8' height
9	PP	<i>Picea pungens</i> 'Hoopsii'	Hoopsii Colorado Blue Spruce	6 - 8' height
11	TP	<i>Thuja plicata</i> 'Green Giant'	Green Giant Western Red Cedar	6 - 8' height

REVISIONS	DATE	DESCRIPTION
1	05/21/20	DRAINAGE SYSTEM
2	10/22/20	CONSERVATION COMMENTS
3	02/01/21	REVISED PLANTING PER NEW BASE
4	02/25/22	REVISED PLANTING PER NEW BASE
5	02/20/23	REVISED PLANTING PER NEW BASE

**AMENDED SITE DEVELOPMENT PLAN**  
**A COMPREHENSIVE PERMIT M.G.L.C. 40B**  
**"THE RESIDENCES AT BURNS AVENUE"**  
 WALPOLE, MASSACHUSETTS

APPLICANT:  
 WALL STREET DEVELOPMENT CORP.  
 P.O. BOX 272  
 WESTWOOD, MA 02090

**Cosmos Associates**  
 Landscape Architects & Site Planners  
 5 Longview Street  
 Natick, MA 01760  
 p: 508.654.6847  
 www.cosmosassociates.com

DESIGNED BY: SGC  
 DRAWN BY: REC  
 DATE: NOV. 23, 2020  
 SCALE: 1" = 30'  
 SHEET: 1 of 1  
 PLAN #: 27,096