

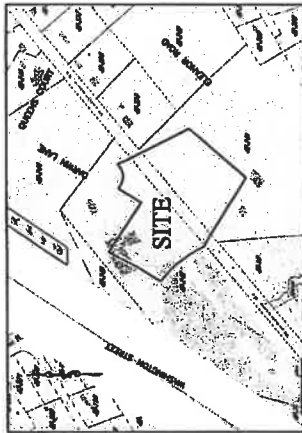
THE RESIDENCES AT DARWIN COMMONS
DARWIN LANE – WALPOLE, MA
APPLICATION FOR COMPREHNSIVE PERMIT
UNDER M.G.L. C. 40B

ZONING BOARD OF APPEALS OF THE TOWN OF WALPOLE
COMPREHENSIVE PERMIT REGULATIONS
AUGUST 30, 2021

SECTION 3.2.5 – PRELIMINARY SITE DEVELOPMENT PLANS

THE RESIDENCES AT DARWIN COMMON IN WALPOLE, MA AUGUST 13, 2021

ZONING SCHEDULE
 ZONING: RESIDENCE B / WROFD - AREA 1
 LOT AREA 20,000 S.F.
 NON WETLAND LOT AREA 12,000 S.F.
 LOT FRONTAGE 125.00 FT.
BUILDING SETBACKS:
 FRONT 30.00 FT.
 SIDE 15.00 FT.
 REAR 30.00 FT.



LOCUS MAP
SCALE: 1"=200'

OWNER

JOHN HASENJAERGER
P.O. BOX 661
NORWOOD, MA 02062

APPLICANT

WALL STREET DEVELOPMENT CORP.
P.O. BOX 272
WESTWOOD, MA 02090

DEED REFERENCE
 LAND COURT CERTIFICATE #205723
(LOT 2)
 LAND COURT CERTIFICATE #154084
(LOT 16)
 LAND COURT PLAN 4531-L (LOT 2)
 LAND COURT PLAN 4531-L (LOT 16)

ASSESSORS PARCELS

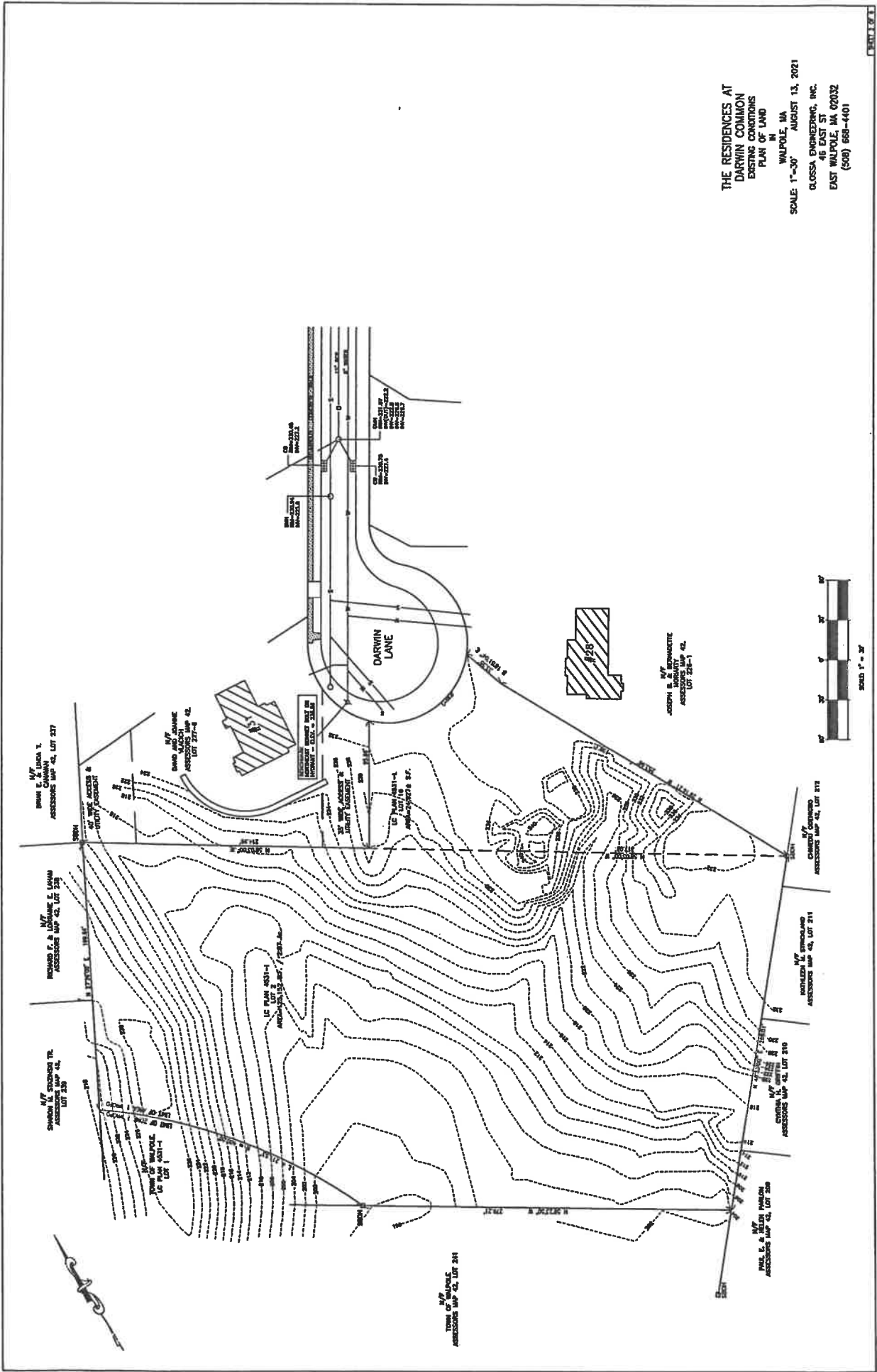
MAP 42 LOT 240
MAP 42 LOT 227-13

ENGINEER:

GLOSSA ENGINEERING INC.
46 EAST STREET
EAST WALPOLE, MA 02032
(508) 668 - 4401

PLAN INDEX

- SHEET 1: COVER SHEET
- SHEET 2: EXISTING CONDITIONS PLAN
- SHEET 3: SITE PLAN
- SHEET 4: GRADING AND DRAINAGE PLAN
- SHEET 5: UTILITIES PLAN
- SHEET 6: DETAILS

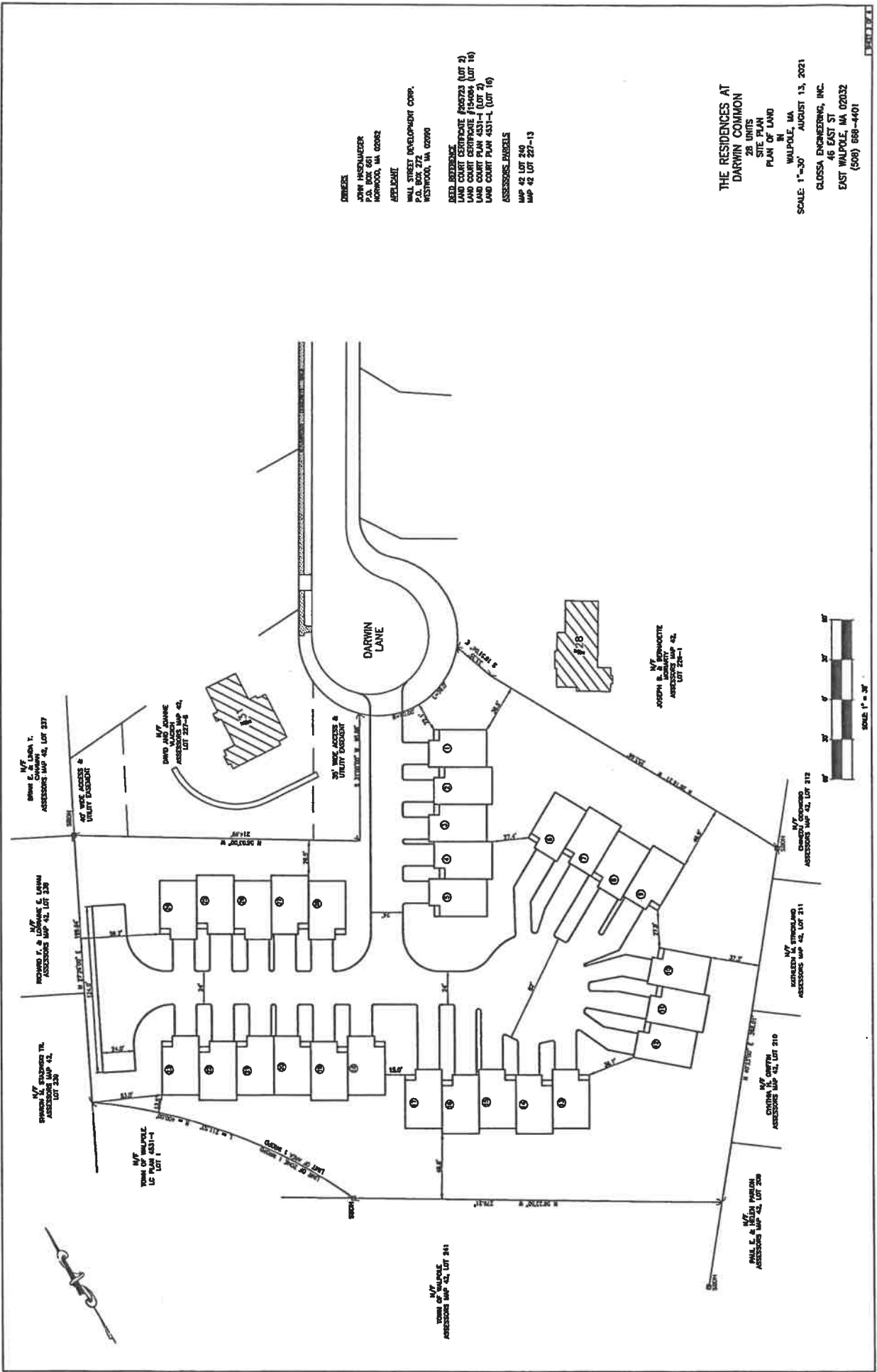


THE RESIDENCES AT
 DARWIN COMMON
 EXISTING CONDITIONS
 PLAN OF LAND
 IN
 WALPOLE, MA
 SCALE: 1"=30' AUGUST 13, 2021
 CLOSSA ENGINEERING, INC.
 46 EAST ST
 EAST WALPOLE, MA 02032
 (508) 668-4401



SCALE: 1" = 30'

PLAN 1 OF 1



OWNER:

JOHN MASCHAUER
P.O. BOX 661
WALPOLE, MA 02032

APPLICANT:

WALL STREET DEVELOPMENT CORP.
P.O. BOX 200
WESTWOOD, MA 02090

DEED REFERENCE:

LAND COURT CERTIFICATE #05723 (LOT 2)
LAND COURT CERTIFICATE #15404 (LOT 16)
LAND COURT PLAN 4331-1 (LOT 2)
LAND COURT PLAN 4331-1 (LOT 16)

ASSESSORS PARCELS:

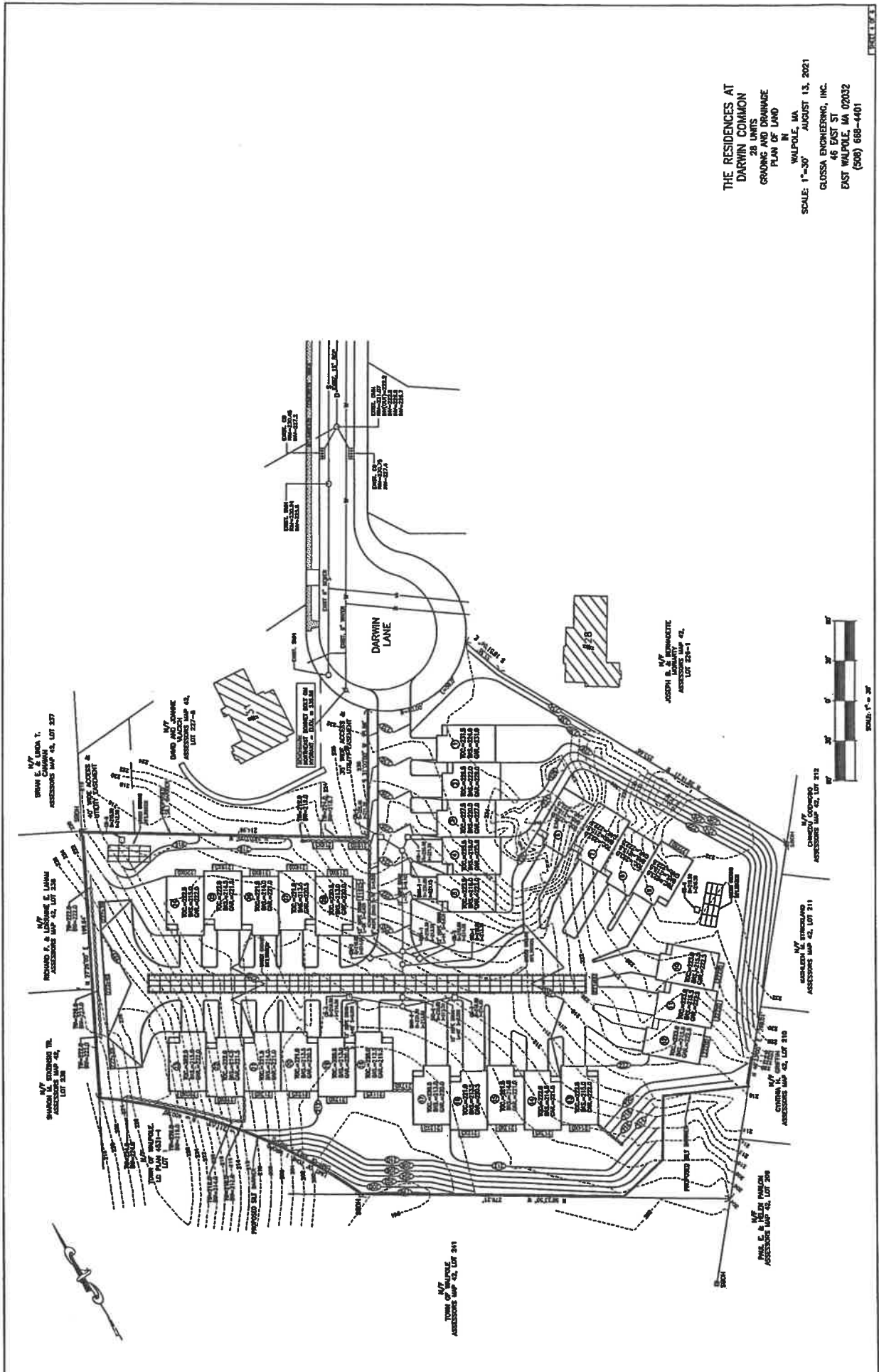
MAP 42 LOT 210
MAP 42 LOT 227-13

**THE RESIDENCES AT
DARWIN COMMON**

26 WINDS
SUNSET
PLAN OF LAND
IN
WALPOLE, MA

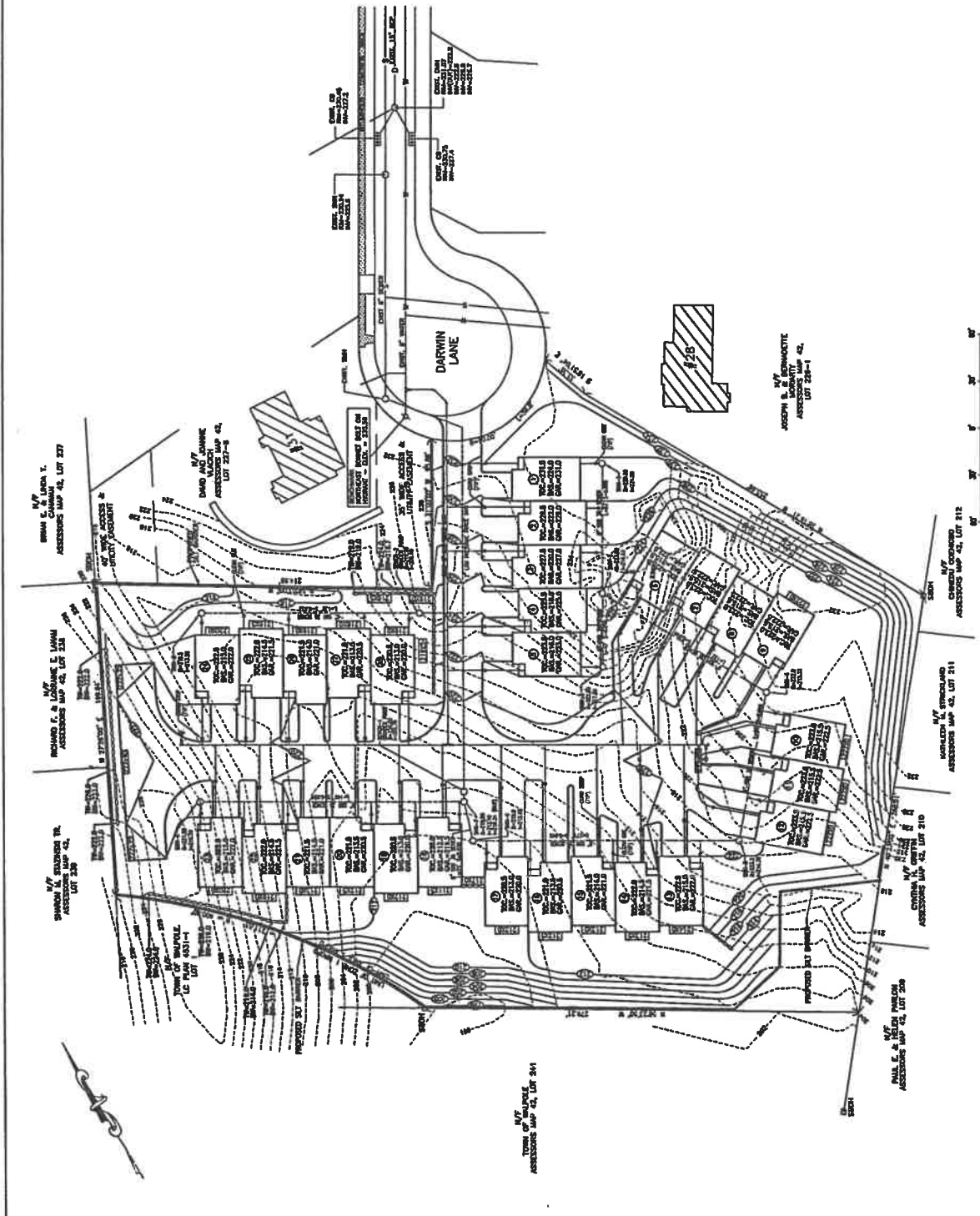
SCALE: 1"=30' AUGUST 13, 2021

GLOSSA ENGINEERING, INC.
46 EAST ST
EAST WALPOLE, MA 02032
(508) 668-4401



**THE RESIDENCES AT
 DARWIN COMMON**
 28 UNITS
 GRADING AND DRAINAGE
 PLAN OF LAND
 WALPOLE, MA
 SCALE: 1"=30'
 AUGUST 13, 2021
 GLOSSA ENGINEERING, INC.
 46 EAST ST
 EAST WALPOLE, MA 02032
 (508) 688-4401

THE RESIDENCES AT
 DARWIN COMMON
 28 UNITS
 UTILITIES
 PLAN OF LAND
 IN
 WALPOLE, MA
 AUGUST 13, 2021
 GLOSSA ENGINEERING, INC.
 46 EAST ST
 EAST WALPOLE, MA 02032
 (508) 668-4401



SCALE: 1" = 20'



M/T
 JOHN T. CHAMBERLAIN
 ACCESSORS MAP 42, LOT 237

M/T
 ROYAL F. & LORRAINE E. WYMAN
 ACCESSORS MAP 42, LOT 238

M/T
 BRUNO A. & MARY E. WYMAN
 ACCESSORS MAP 42, LOT 239

M/T
 DAVID A. & JANE M. WALKER
 ACCESSORS MAP 42, LOT 237-8

M/T
 JOSEPH B. & BERNARDINE
 ACCESSORS MAP 42, LOT 236-1

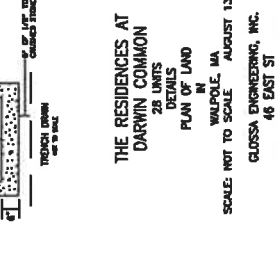
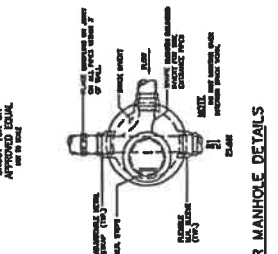
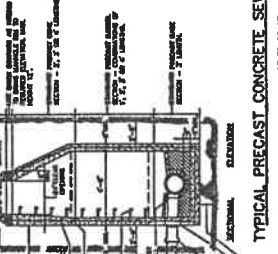
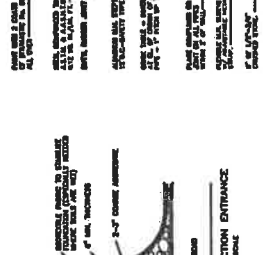
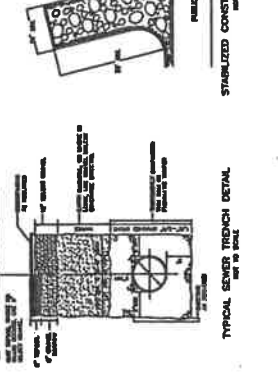
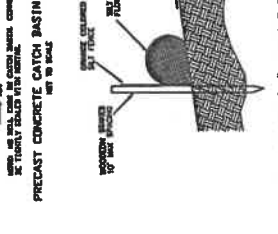
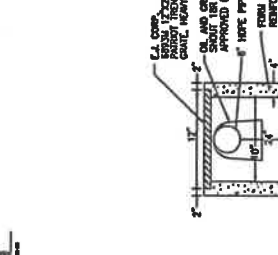
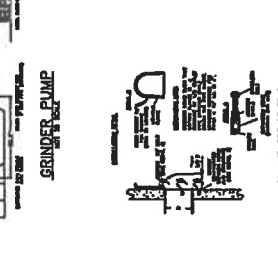
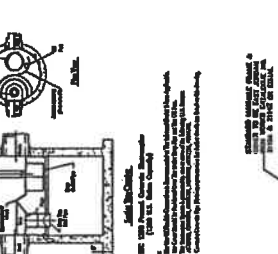
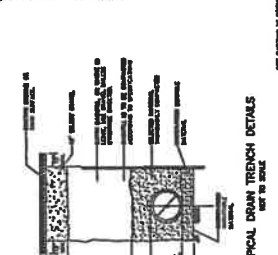
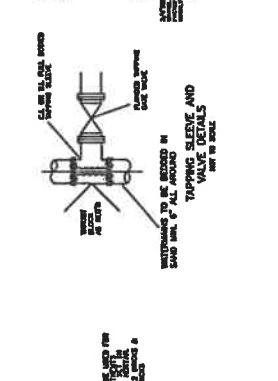
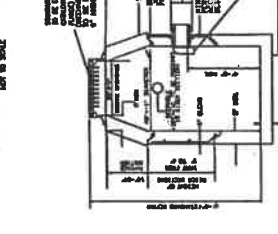
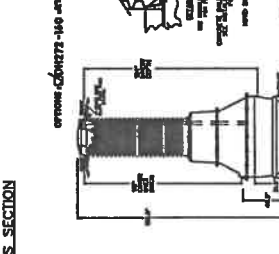
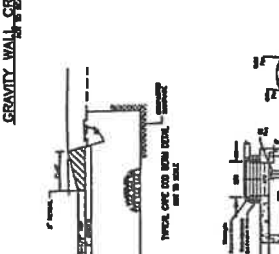
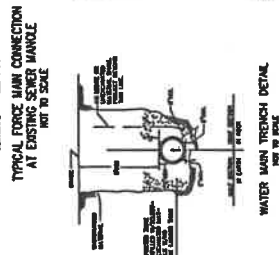
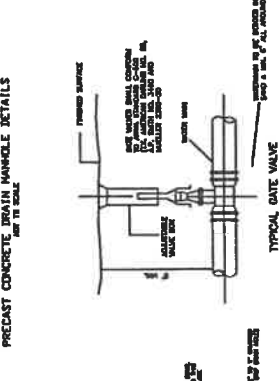
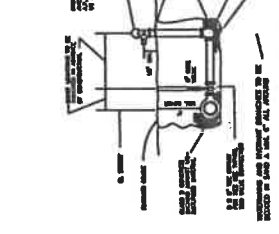
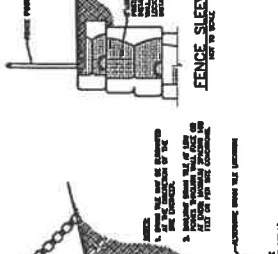
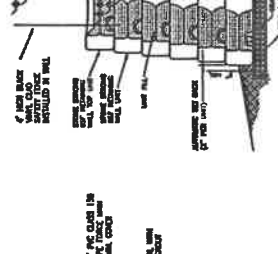
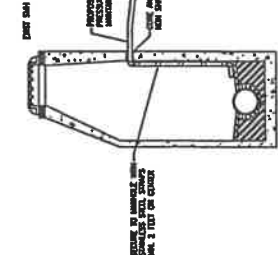
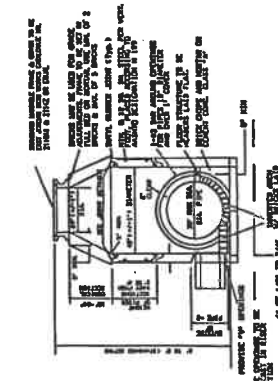
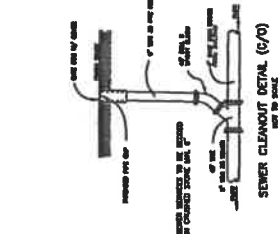
M/T
 CHARLES W. & MARY E. WYMAN
 ACCESSORS MAP 42, LOT 212

M/T
 WALTER L. & STEPHANIE
 ACCESSORS MAP 42, LOT 211

M/T
 JOHN T. CHAMBERLAIN
 ACCESSORS MAP 42, LOT 210

M/T
 PAUL E. & MARY E. WYMAN
 ACCESSORS MAP 42, LOT 208

M/T
 JOHN T. CHAMBERLAIN
 ACCESSORS MAP 42, LOT 241



THE RESIDENCES AT
DARWIN COMMON
20 UNITS
PLAN OF LAND
IN
WALPOLE, MA
SCALE: NOT TO SCALE AUGUST 13, 2021
GROSSA ENGINEERING, INC.
46 EAST ST
EAST WALPOLE, MA 02032
(508) 688-4401

SCALE: NOT TO SCALE

SCALE: NOT TO SCALE

SCALE: NOT TO SCALE

SCALE: NOT TO SCALE

SCALE: NOT TO SCALE

SCALE: NOT TO SCALE